
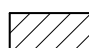
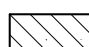
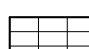



SEC. 5, T 21 N, R 11 W, 2ND PM

-  BASE COURSE (OPTION)
-  CONCRETE GUTTER, TYPE A
-  CLASS SI CONCRETE (OUTLET)
-  PAVEMENT REMOVAL
-  PAVED SHOULDER REMOVAL

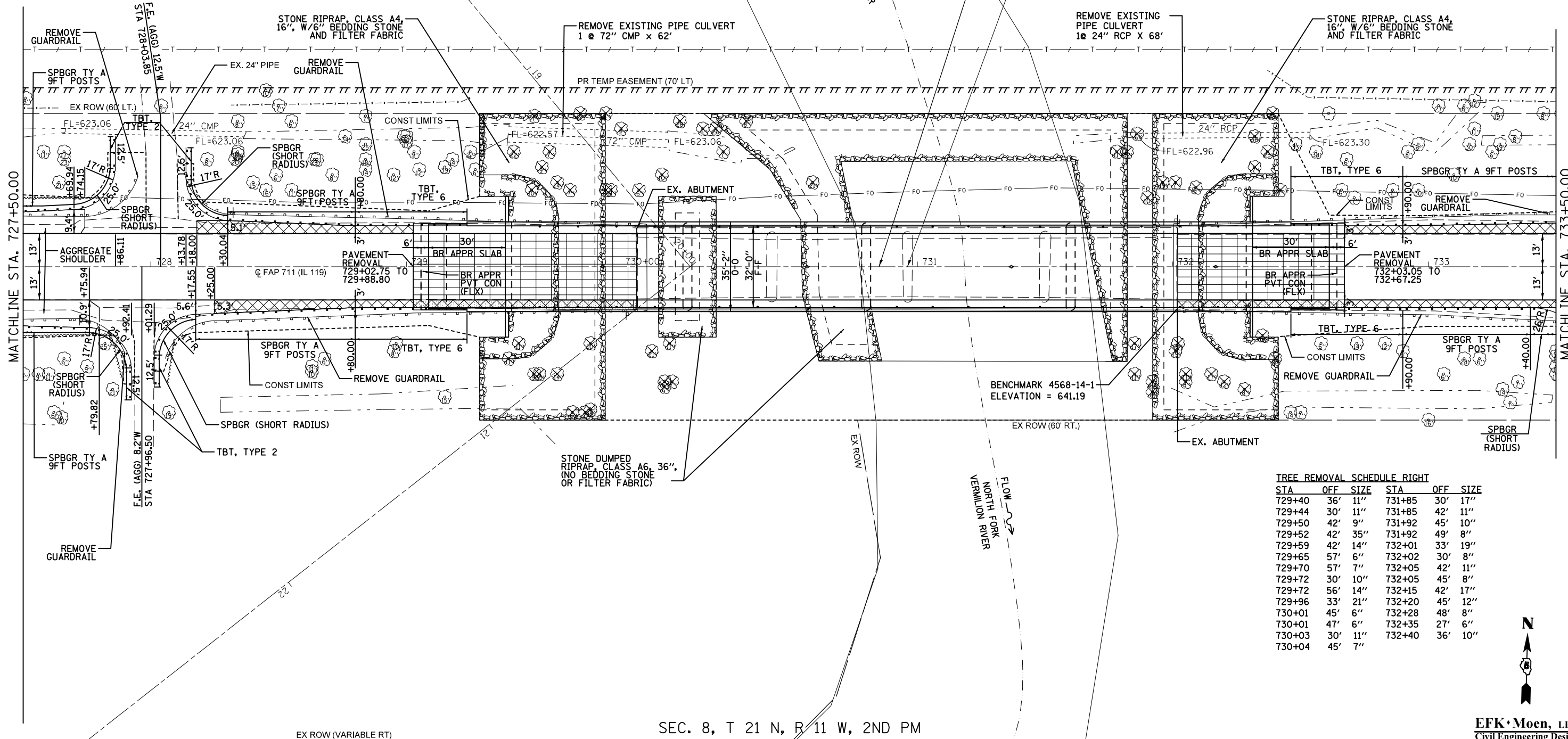
TREE REMOVAL SCHEDULE LEFT					
STA	OFF	SIZE	STA	OFF	SIZE
729+42	45'	22"	731+78	45'	11"
729+49	30'	10"	731+82	45'	32"
729+50	59'	7"	731+86	52'	6"
729+53	39'	9"	731+90	27'	10"
729+56	45'	7"	731+96	33'	19"
729+59	33'	14"	732+01	33'	7"
729+64	30'	7"	732+09	31'	9"
729+68	60'	12"	732+32	39'	7"
729+78	30'	9"	732+32	51'	36"
729+78	60'	8"	732+37	45'	25"
729+80	30'	11"	732+39	60'	29"
729+84	54'	9"	732+42	30'	7"
729+91	30'	6"			
730+00	36'	10"			
730+07	57'	28"			
730+16	54'	6"			
730+21	54'	26"			
730+24	45'	7"			
730+33	57'	8"			
730+59	33'	21"			

PROPOSED S.N. 092-0207
 STATION 730+85.00
 4 SPANS @ 292'-6" B-B ABUTS 32'-0" DECK
 0° SKEW
 48" PPC I BEAMS W/REINF. CONC. DECK

EXISTING S.N. 092-0065
 STATION 730+96.00
 4 SPANS @ 214'-3"
 B-B ABUTS, 33'-0" DECK
 0° SKEW
 27" PPC DECK BEAMS

REMOVE EXISTING
 PIPE CULVERT
 1 @ 24" RCP X 68"

STONE RIPRAP, CLASS A4,
 16", W/6" BEDDING STONE
 AND FILTER FABRIC



SEC. 8, T 21 N, R 11 W, 2ND PM

TREE REMOVAL SCHEDULE RIGHT					
STA	OFF	SIZE	STA	OFF	SIZE
729+40	36'	11"	731+85	30'	17"
729+44	30'	11"	731+85	42'	11"
729+50	42'	9"	731+92	45'	10"
729+52	42'	35"	731+92	49'	8"
729+59	42'	14"	732+01	33'	19"
729+65	57'	6"	732+02	30'	8"
729+70	57'	7"	732+05	42'	11"
729+72	30'	10"	732+05	45'	8"
729+72	56'	14"	732+15	42'	17"
729+96	33'	21"	732+20	45'	12"
730+01	45'	6"	732+28	48'	8"
730+01	47'	6"	732+35	27'	6"
730+03	30'	11"	732+40	36'	10"
730+04	45'	7"			



EFK Moen, LLC
 Civil Engineering Design

FILE NAME =	USER NAME = hoganbj	DESIGNED - JD	REVISED - BJH 01/24/2014
*FILE#		DRAWN - JD/MK	REVISED -
	PLOT SCALE = 48.0000' / in.	CHECKED - SD	REVISED -
	PLOT DATE = 1/24/2014	DATE - 10/18/13	REVISED -

STATE OF ILLINOIS
 DEPARTMENT OF TRANSPORTATION

DESIGN PLAN SHEET

SCALE: 1" = 20' SHEET NO. 2 OF 5 SHEETS STA. 727+50.00 TO STA. 733+50.00

F.A.P. RTE.	SECTION	COUNTY	TOTAL SHEETS	SHEET NO.
711	116BR-1	VERMILION	84	20
CONTRACT NO. 70614				
ILLINOIS FED. AID PROJECT				