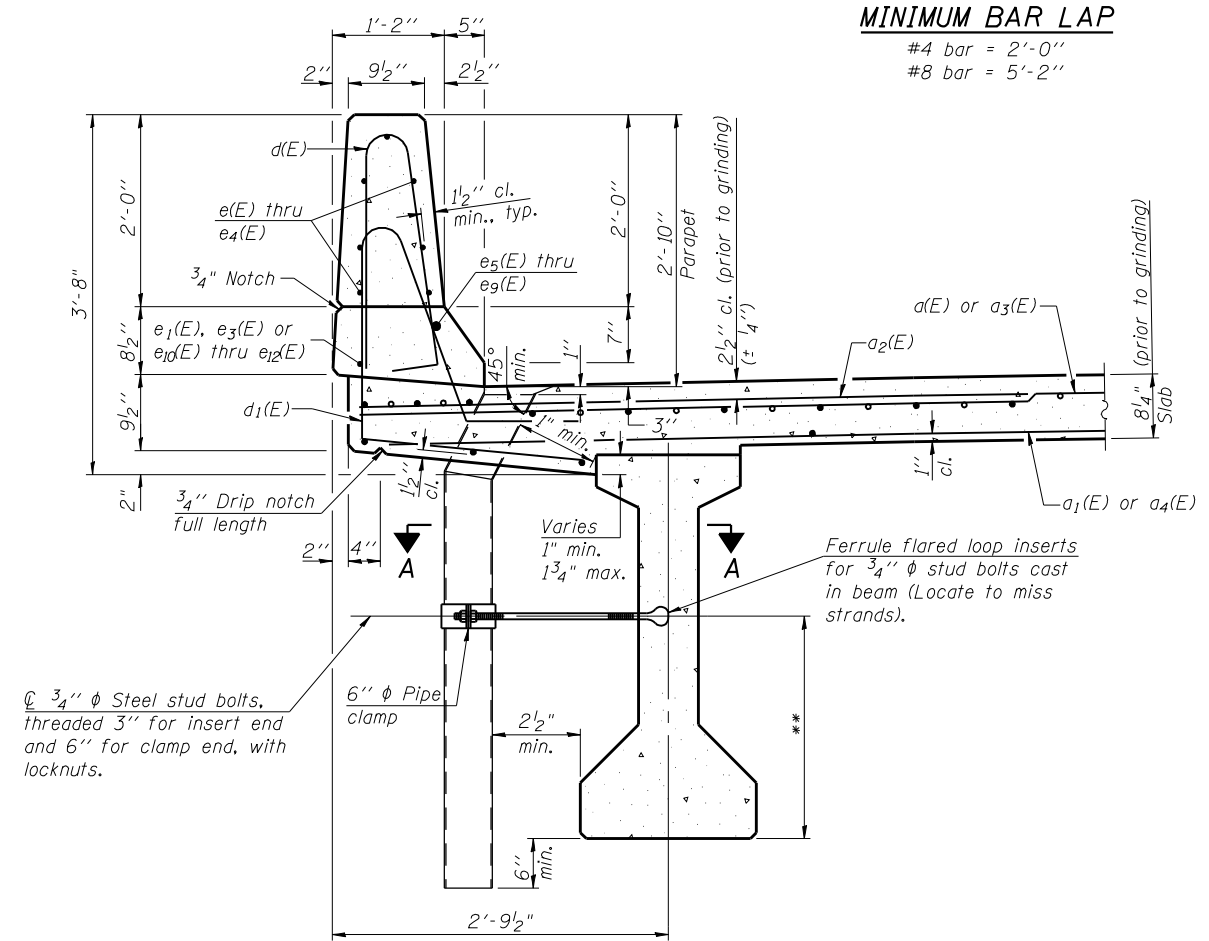


INSIDE ELEVATION OF PARAPET

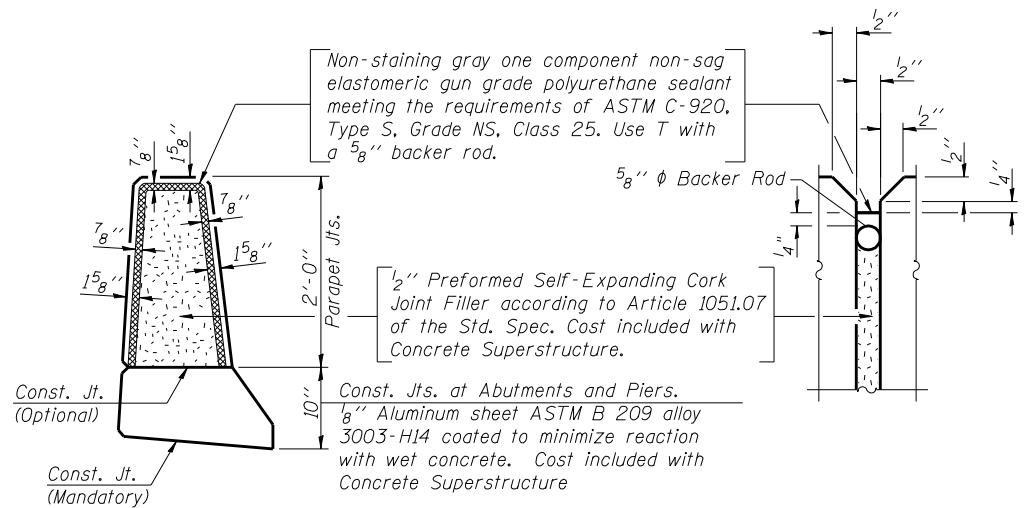
MINIMUM BAR LAP

#4 bar = 2'-0"
#8 bar = 5'-2"



SECTION THRU PARAPET

**For insert locations See sheets 19, 20 & 21 of 33. See sheet 13 of 33 for Section A-A



PARAPET JOINT DETAILS

PRINT DATE: 3/24/2014 12:42:40 PM Z:\10053301\1119 over- Vermlition\pdr\Bridges\Final\Plotsheets\0920207-70614-012-Superstr-De1.dgn

EFK Moen, LLC
Civil Engineering Design
331 Salem Place, Suite 225
Fairview Heights, IL 62208
Phone 618-206-4250

USER NAME = cdl	DESIGNED - CTW	REVISED -
PLOT SCALE = 0:2 " = 1' IN.	CHECKED - CDL	REVISED -
PLOT DATE = 3/24/2014	DRAWN - CTW	REVISED -
	DATE - 3/24/2014	REVISED -

STATE OF ILLINOIS
DEPARTMENT OF TRANSPORTATION

SUPERSTRUCTURE DETAILS (1 OF 2)
STRUCTURE NO. 092-0207

SHEET NO. 12 OF 33 SHEETS

F.A.P. RTE.	SECTION	COUNTY	TOTAL SHEETS	SHEET NO.
711	I16BR-1	VERMILION	84	42
CONTRACT NO. 70614				
ILLINOIS FED. AID PROJECT				