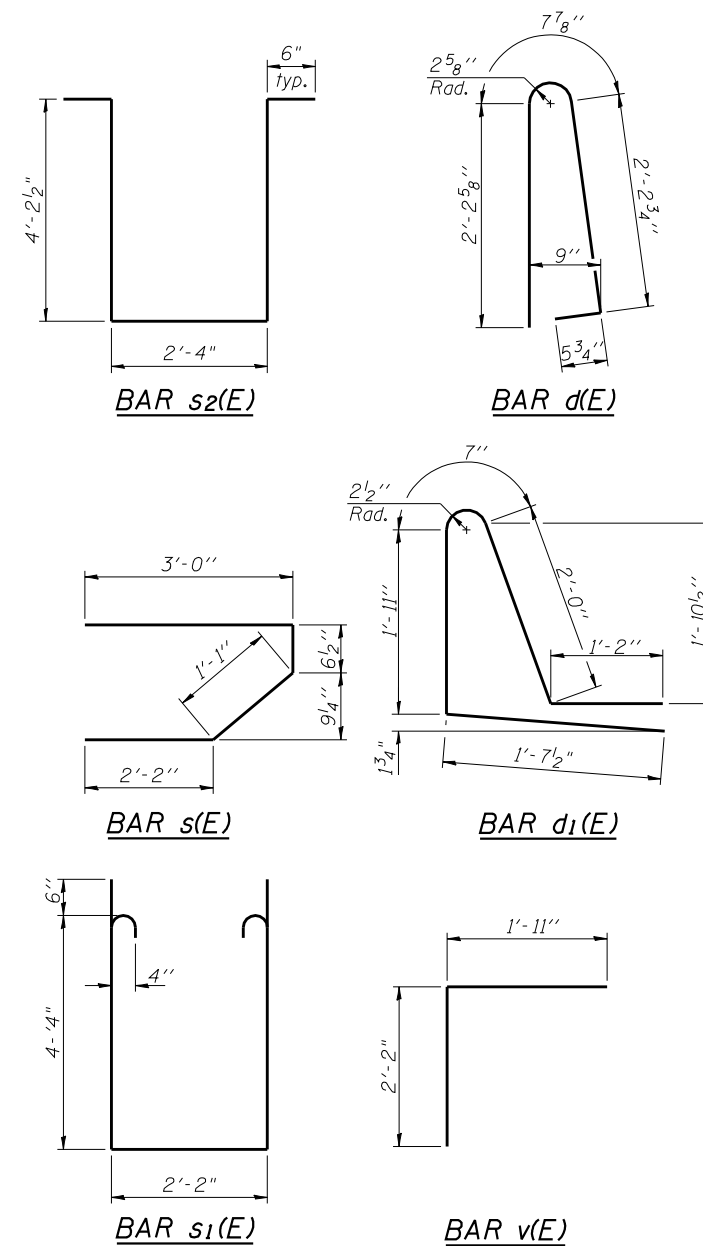


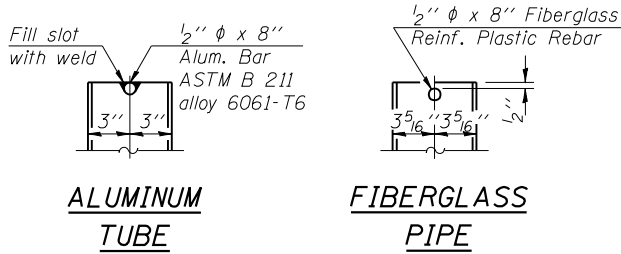
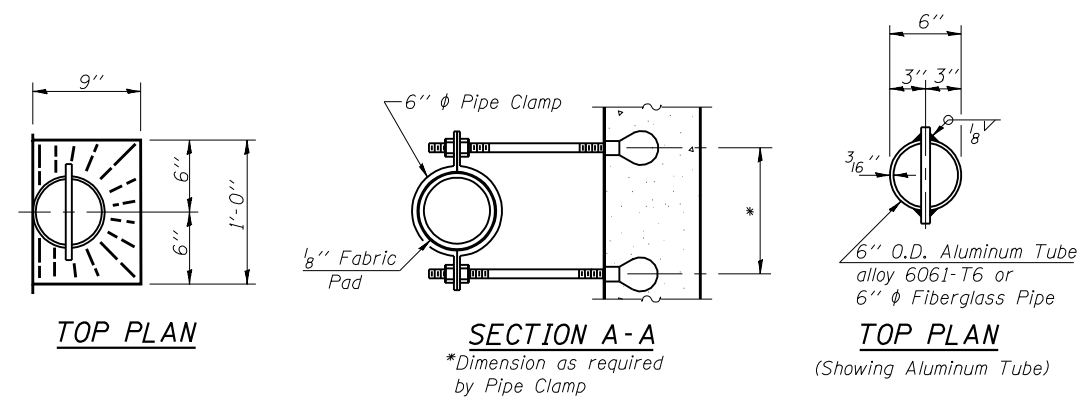
**SUPERSTRUCTURE
BILL OF MATERIAL**

Bar	No.	Size	Length	Shape
a(E)	501	#5	16'-8"	—
a ₁ (E)	351	#5	16'-2"	—
a ₂ (E)	1002	#6	6'-6"	—
a ₃ (E)	501	#5	17'-8"	—
a ₄ (E)	351	#5	17'-2"	—
b(E)	468	#6	27'-11"	—
b ₁ (E)	74	#7	21'-0"	—
b ₂ (E)	341	#5	29'-7"	—
b ₃ (E)	74	#7	22'-0"	—
b ₄ (E)	74	#7	22'-0"	—
b ₅ (E)	50	#5	21'-3"	—
d(E)	640	#5	5'-7"	┘
d ₁ (E)	640	#5	7'-4"	┘
e(E)	112	#4	15'-4"	—
e ₁ (E)	64	#4	8'-6"	—
e ₂ (E)	42	#4	17'-3"	—
e ₃ (E)	32	#4	9'-9"	—
e ₄ (E)	56	#4	14'-9"	—
e ₅ (E)	8	#8	33'-9"	—
e ₆ (E)	8	#8	8'-6"	—
e ₇ (E)	4	#8	28'-9"	—
e ₈ (E)	4	#8	9'-9"	—
e ₉ (E)	4	#8	32'-6"	—
e ₁₀ (E)	12	#4	22'-1"	—
e ₁₁ (E)	4	#4	27'-2"	—
e ₁₂ (E)	6	#4	21'-3"	—
m(E)	10	#6	16'-9"	—
m ₁ (E)	8	#6	9'-5"	—
m ₂ (E)	38	#6	3'-9"	—
m ₃ (E)	4	#6	1'-6"	—
m ₄ (E)	16	#6	7'-9"	—
m ₅ (E)	2	#6	1'-2"	—
m ₆ (E)	10	#6	17'-9"	—
m ₇ (E)	2	#6	2'-2"	—
m ₈ (E)	60	#4	5'-0"	—
m ₉ (E)	18	#8	5'-10"	—
s(E)	74	#5	6'-10"	┘
s ₁ (E)	66	#4	11'-10"	┘
s ₂ (E)	81	#4	11'-9"	┘
v(E)	70	#5	4'-1"	┘
Protective Coat			Sq. Yds.	1285
Concrete Superstructure			Cu. Yds.	398.1
Bridge Deck Grooving			Sq. Yds.	975
Reinforcement Bars, Epoxy Coated			Lbs.	97,900
Diamond Grinding (Bridge Section)			Sq. Yds.	910

Bars indicated thus 1 x 2-#5 etc. indicates 1 line of bars with 2 lengths per line.



Notes:
 Fiberglass pipe shall conform to ASTM D2996, with short-time rupture strength hoop tensile stress of 30,000 p.s.i. minimum.
 The exterior surfaces of the floor drains shall be coated or pigmented by the manufacturer with a color that matches the concrete.
 The clamping device and inserts shall be galvanized according to AASHTO M 232. Cost of clamping device and galvanizing included with Floor Drains.



PRINT DATE: 3/24/2014 12:44:52 PM Z:\10053\01\1119\over-Vermilion\cdg\Bridges\Final\Plotsheets\09220207-70614-013-Superstr-De1.dgn

EFK Moen, LLC
 Civil Engineering Design
 331 Salem Place, Suite 225
 Fairview Heights, IL 62208
 Phone 618-206-4250

USER NAME = cdl	DESIGNED - CTW	REVISED -
PLOT SCALE = 0.2" = 1' / IN.	CHECKED - CDL	REVISED -
PLOT DATE = 3/24/2014	DRAWN - CTW	REVISED -
	DATE - 3/24/2014	REVISED -

**STATE OF ILLINOIS
DEPARTMENT OF TRANSPORTATION**

**SUPERSTRUCTURE DETAILS (2 OF 2)
STRUCTURE NO. 092-0207**

SHEET NO. 13 OF 33 SHEETS

F.A.P. RTE.	SECTION	COUNTY	TOTAL SHEETS	SHEET NO.
711	116BR-1	VERMILION	84	43
			CONTRACT NO. 70614	
ILLINOIS FED. AID PROJECT				