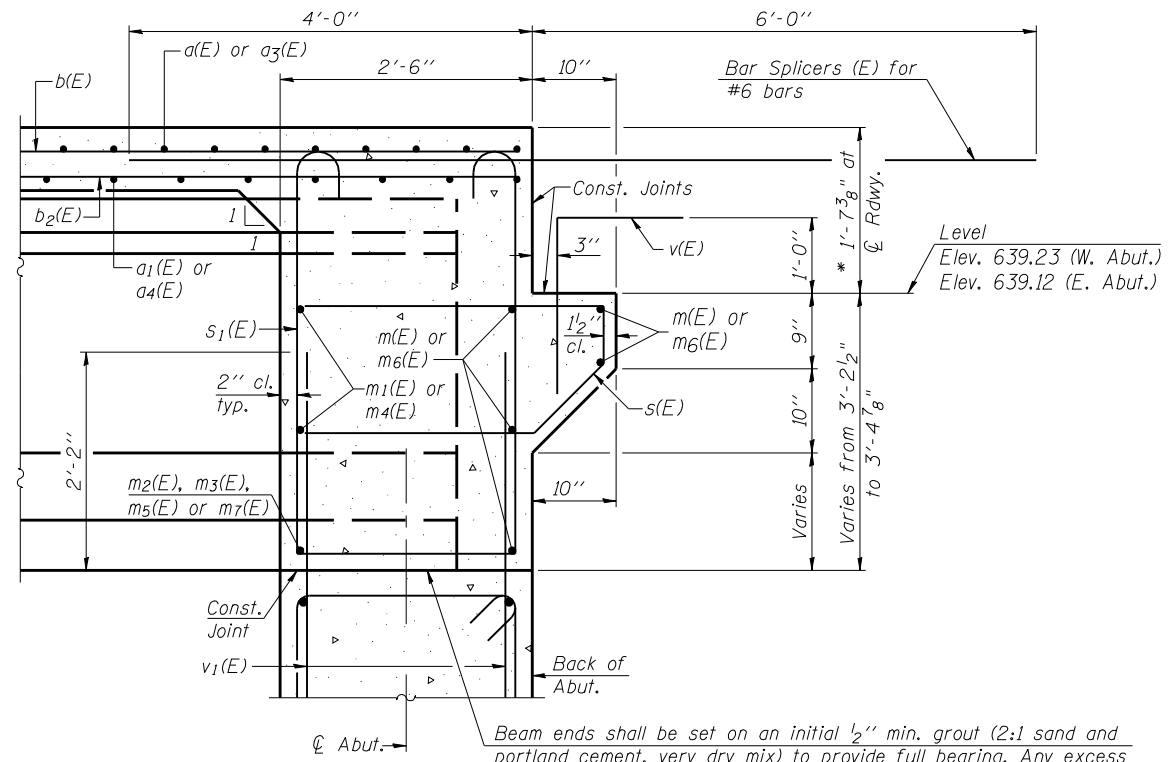


ELEVATION AT ABUTMENT
 (East Abutment shown - Looking East)
 (West Abutment - Opposite Hand)



Beam ends shall be set on an initial 1/2" min. grout (2:1 sand and portland cement, very dry mix) to provide full bearing. Any excess grout squeezed out from under the beam shall be removed. Cost included with Concrete Structures.

SECTION A-A
 * Prior to grinding.

Notes:
 Reinforcement bars in diaphragm are billed with superstructure on sheet 13 of 33.
 Concrete in diaphragm is included with concrete superstructure on sheet 13 of 33.
 For details of bars s(E) and s₁(E), see sheet 13 of 33.
 For details of v₁(E) bars, see sheet 24 and 25 of 33.
 For bar splicer details, see sheet 30 of 33.

MINIMUM BAR LAP
 #6 Bars = 3'-4"

PRINT DATE: 3/24/2014 12:43:32 PM Z:\10053\01 1119 over - Vermilion.dgn\Bridges\Final\Plotsheets\0920207-70614-014-Abut...Dwg.dgn

EFK Moen, LLC
 Civil Engineering Design
 331 Salem Place, Suite 225
 Fairview Heights, IL 62208
 Phone 618-206-4250

USER NAME = cdl	DESIGNED - CTW	REVISED -
PLOT SCALE = 0/2" = 1' / IN.	CHECKED - CDL	REVISED -
PLOT DATE = 3/24/2014	DRAWN - CTW	REVISED -
	DATE - 3/24/2014	REVISED -

STATE OF ILLINOIS
DEPARTMENT OF TRANSPORTATION

INTEGRAL ABUTMENT DIAPHRAGM DETAILS
STRUCTURE NO. 092-0207

F.A.P. RTE.	SECTION	COUNTY	TOTAL SHEETS	SHEET NO.
711	116BR-1	VERMILION	84	44
CONTRACT NO. 70614				

SHEET NO. 14 OF 33 SHEETS

ILLINOIS FED. AID PROJECT