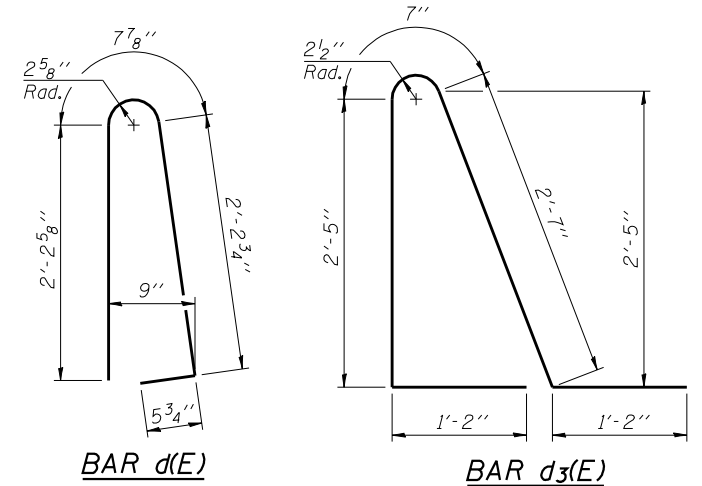


SECTION C-C
(**** Prior to grinding.)

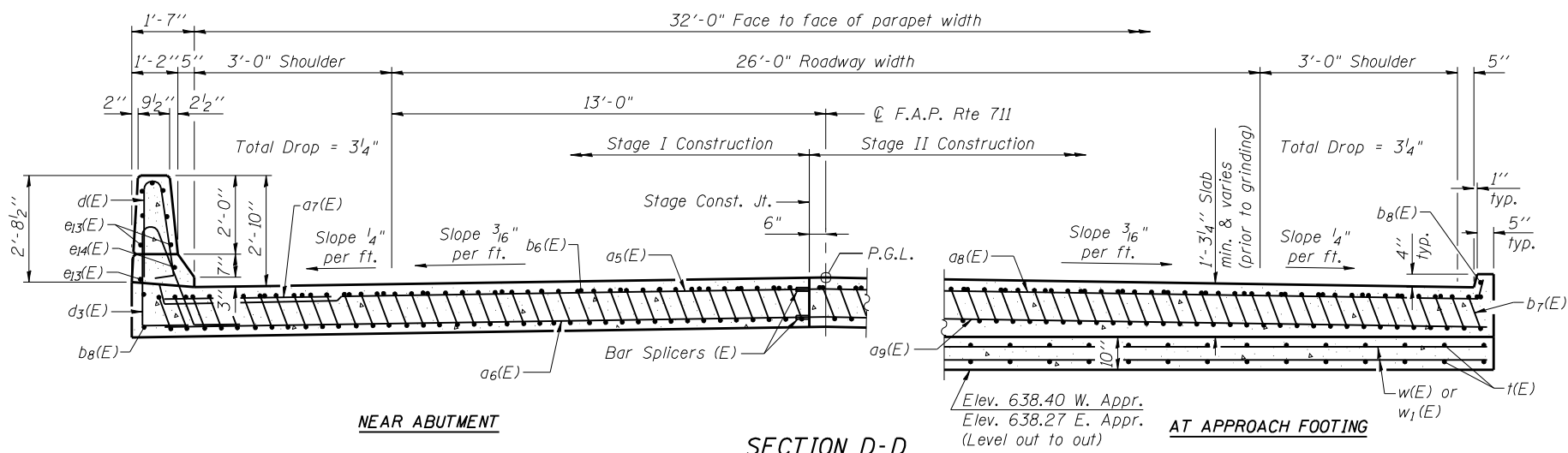
Notes:
 See sheet 16 of 33 for Detail A and View B-B.
 Approach slab and parapet concrete shall be paid for as Concrete Superstructure.
 Approach footing concrete shall be paid for as Concrete Structures.
 Reinforcement shall be paid for as Reinforcement Bars, Epoxy Coated.
 For v(E) bar details, see sheets 13 and 14 of 33.
 The approach footing maximum applied service bearing pressure (Qmax) = 2.0 ksf.
 For bar splicer details, see sheet 30 of 33.
 Cost of excavation for approach footing included with Concrete Structures.
 For Granular Backfill for Structures and drainage treatment details, see sheet 2 of 33.
 For additional parapet details, see sheets 12 and 13 of 33.



BAR d(E)

BAR d3(E)

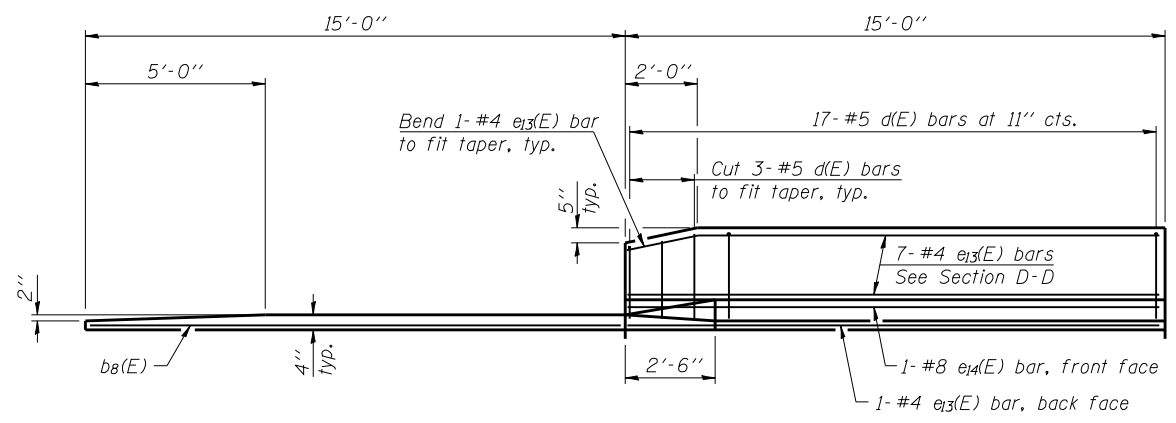
* Tilt #9 b7(E) bars as required to maintain clearance.
 *** Cost included with Concrete Superstructure.



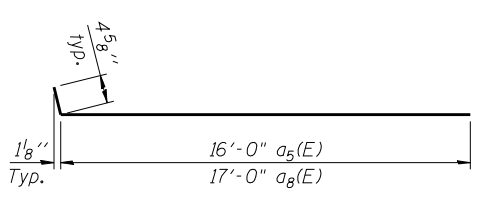
NEAR ABUTMENT

SECTION D-D
(See Plan for dimensions not shown)

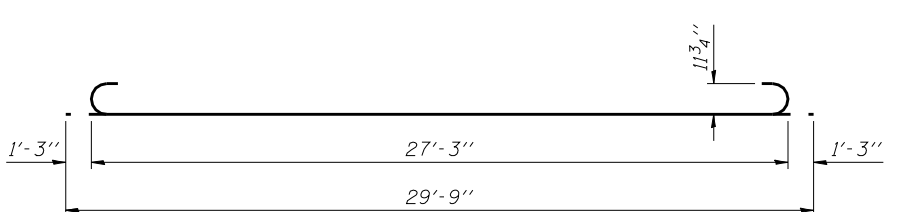
AT APPROACH FOOTING



VIEW E-E



BAR a5(E) AND a8(E)



BAR b7(E)

**TWO APPROACHES
BILL OF MATERIAL**

Bar	No.	Size	Length	Shape
a5(E)	50	#4	16'-5"	—
a6(E)	92	#5	16'-1"	—
a7(E)	48	#6	6'-6"	—
a8(E)	50	#4	17'-5"	—
a9(E)	92	#5	17'-1"	—
b6(E)	58	#4	29'-8"	—
b7(E)	164	#9	29'-9"	—
b8(E)	8	#4	14'-8"	—
d(E)	68	#5	5'-7"	U
d3(E)	68	#5	7'-11"	U
e13(E)	32	#4	14'-8"	—
e14(E)	4	#8	14'-8"	—
t(E)	70	#4	9'-8"	—
w(E)	80	#5	16'-1"	—
w1(E)	80	#5	17'-1"	—
Protective Coat		Sq. Yd.	246	
Concrete Structures		Cu. Yd.	20.9	
Concrete Superstructure		Cu. Yd.	107.2	
Bridge Deck Grooving		Sq. Yd.	203	
Reinforcement Bars, Epoxy Coated		Pound	27,250	
Diamond Grinding (Bridge Section)		Sq. Yd.	189	

PRINT DATE: 3/17/2014 1:25:45 PM Z:\10053301\1119_ever_Vermilion\gdgn\Brdg\Final\Plotsheets\0920207-70614-017-Appr_Slab_De.dgn

EFK Moen, LLC
 Civil Engineering Design
 331 Salem Place, Suite 225
 Fairview Heights, IL 62208
 Phone 618-206-4250

USER NAME = cdl	DESIGNED - CTW	REVISIONS -
PLOT SCALE = 0.2" = 1' / IN.	CHECKED - CDL	REVISIONS -
PLOT DATE = 3/17/2014	DRAWN - CTW	REVISIONS -
	DATE - 3/17/2014	REVISIONS -

**STATE OF ILLINOIS
DEPARTMENT OF TRANSPORTATION**

**BRIDGE APPROACH SLAB DETAILS (2 OF 2)
STRUCTURE NO. 092-0207**

SHEET NO. 17 OF 33 SHEETS

F.A.P. RTE.	SECTION	COUNTY	TOTAL SHEETS	SHEET NO.
711	116BR-1	VERMILION	84	47
CONTRACT NO. 70614				
ILLINOIS FED. AID PROJECT				