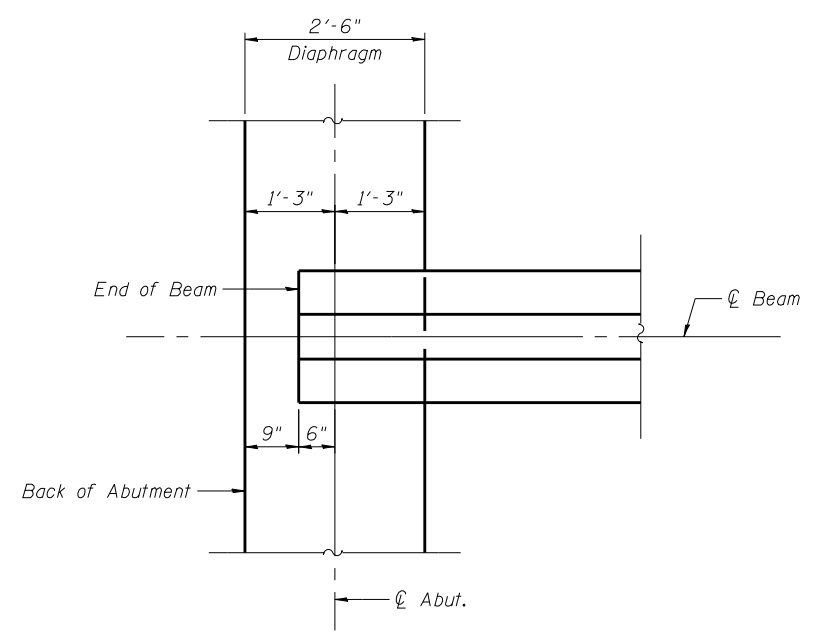
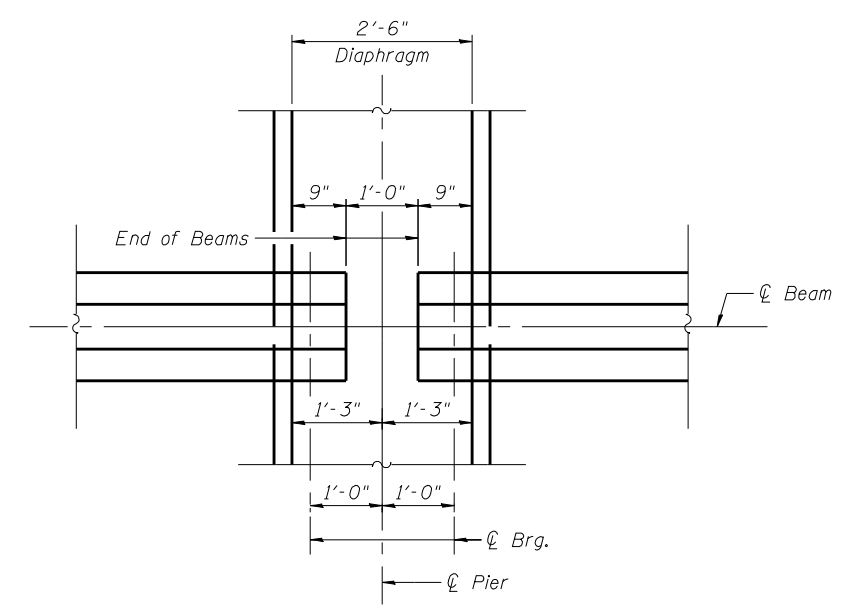


FRAMING PLAN



DETAIL A



DETAIL B

PRINT DATE: 3/24/2014 12:46:31 PM Z:\10053301\1119 over Vermilion\Bridges\Final\Plotsheets\092207-70614-018-Framing Plan.dgn

EFK Moen, LLC
 Civil Engineering Design
 331 Salem Place, Suite 225
 Fairview Heights, IL 62208
 Phone 618-206-4250

USER NAME = cdl	DESIGNED - CTW	REVISED -
PLOT SCALE = 0.2" = 1' / IN.	CHECKED - CDL	REVISED -
PLOT DATE = 3/24/2014	DRAWN - CTW	REVISED -
	DATE - 3/24/2014	REVISED -

STATE OF ILLINOIS
DEPARTMENT OF TRANSPORTATION

FRAMING PLAN
STRUCTURE NO. 092-0207

SHEET NO. 18 OF 33 SHEETS

F.A.P. RTE.	SECTION	COUNTY	TOTAL SHEETS	SHEET NO.
711	116BR-1	VERMILION	84	48
CONTRACT NO. 70614				
ILLINOIS FED. AID PROJECT				