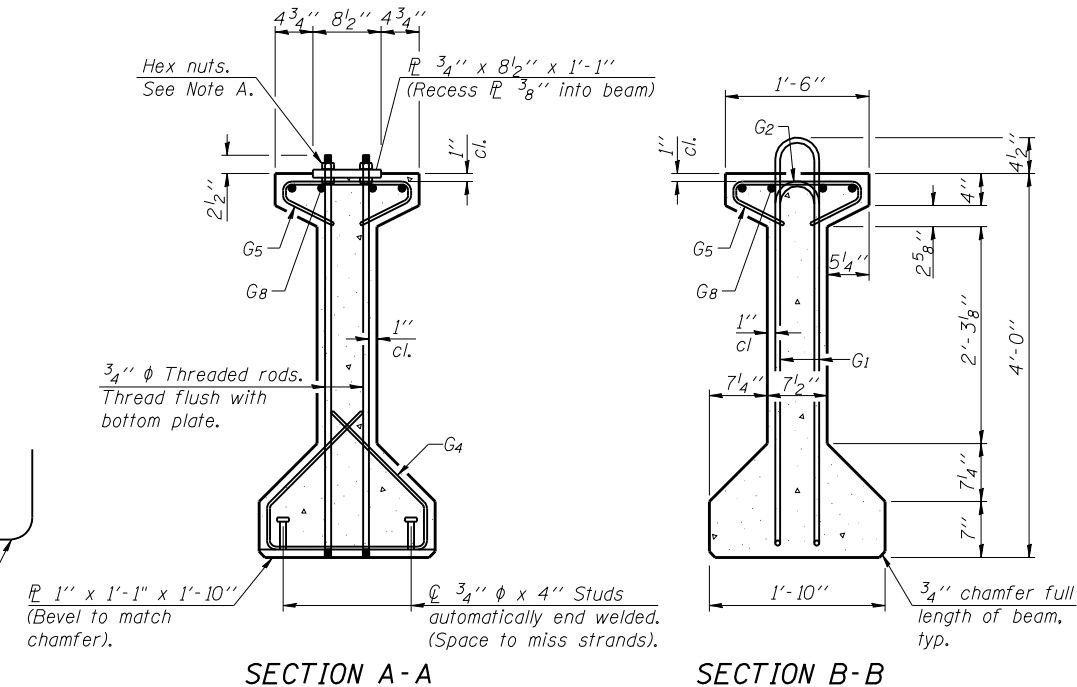
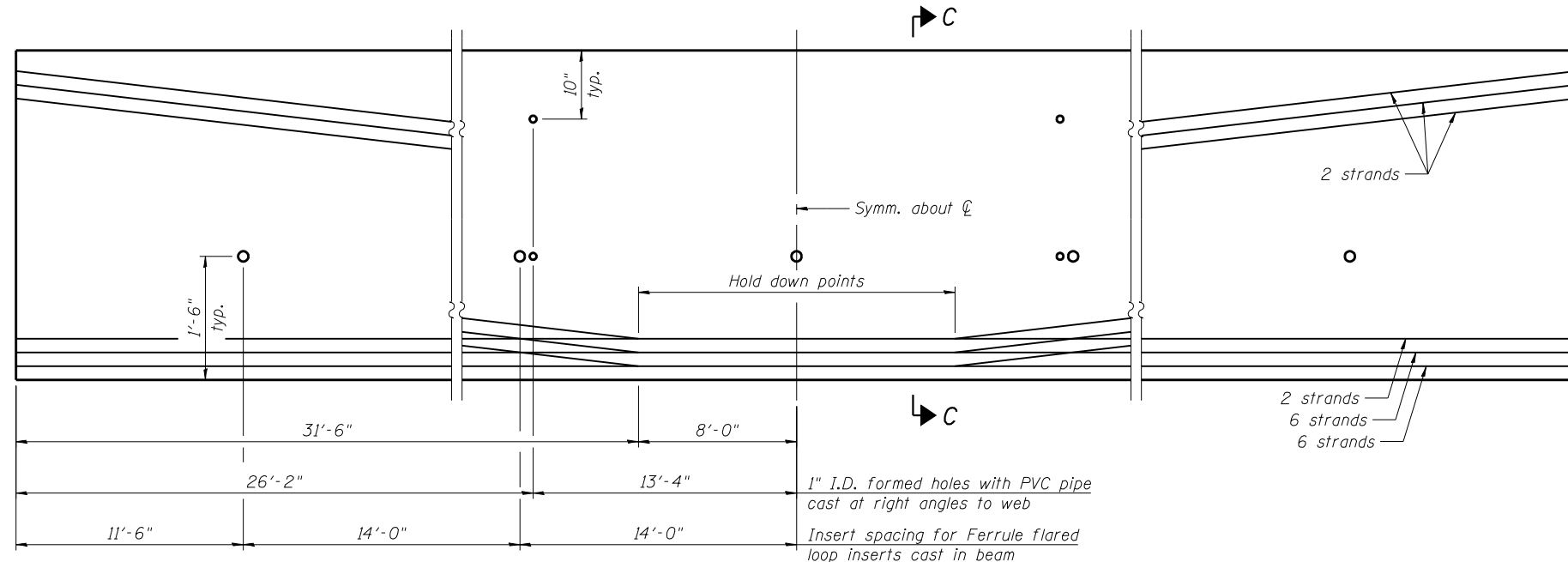


ELEVATION OF BEAM
(Showing reinforcement & dimensions)

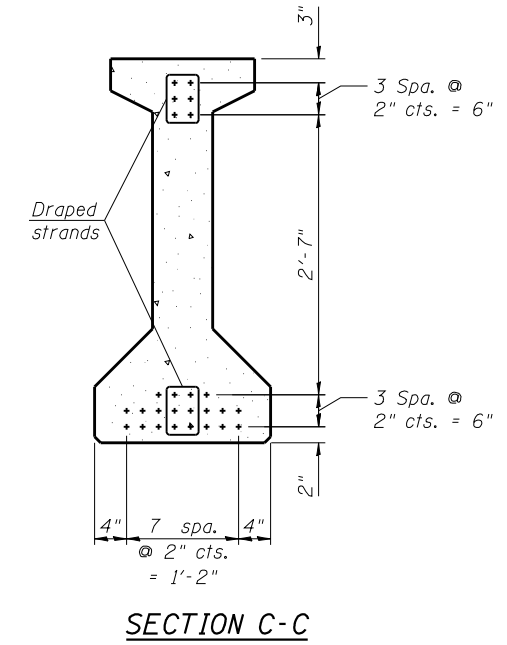
* 3 spaces at 3" = 9".
** 4- 3/4" ϕ threaded dowel rods at 3" cts., Each Face.



Note A:
Hex nuts (top and bottom) with lock washers (top). Only tighten sufficiently to compress lock washers.



ELEVATION OF BEAM
(Showing prestressing steel)



*****BAR LIST ONE BEAM ONLY**

Bar	No.	Size	Length	Shape
G ₁	123	#4	9'-6"	⊔
G ₂	12	#4	7'-11"	⊔
G ₄	38	#3	5'-3"	⊔
G ₅	79	#3	2'-9"	⊔
G ₆	4	#8	6'-6"	⊔
G ₈	12	#7	28'-7"	⊔

Notes:
See sheet 22 of 33 for additional details and Bill of Material.
Required release strength, f'_{ci} , shall be 5,000 psi.
Required final strength, f'_{c} , shall be 6,000 psi.

PRINT DATE: 3/24/2014 12:47:23 PM Z:\10053301\1119_sver_Vermilion\pdp\Bridges\Final\Plotsheets\0920207-70614-021-PPC_Bm_Sp3.dgn

PI-4-48
EFK Moen, LLC
Civil Engineering Design
331 Salem Place, Suite 225
Fairview Heights, IL 62208
Phone 618-206-4250

USER NAME = cdl	DESIGNED - CTW	REVISED -
PLOT SCALE = 0:2' = 1" / IN.	CHECKED - CDL	REVISED -
PLOT DATE = 3/24/2014	DRAWN - CTW	REVISED -
	DATE - 3/24/2014	REVISED -

STATE OF ILLINOIS
DEPARTMENT OF TRANSPORTATION

48" PPC I-BEAM - SPAN 3
STRUCTURE NO. 092-0207

SHEET NO. 21 OF 33 SHEETS

F.A.P. RTE.	SECTION	COUNTY	TOTAL SHEETS	SHEET NO.
711	116BR-1	VERMILION	84	51
CONTRACT NO. 70614				
ILLINOIS FED. AID PROJECT				