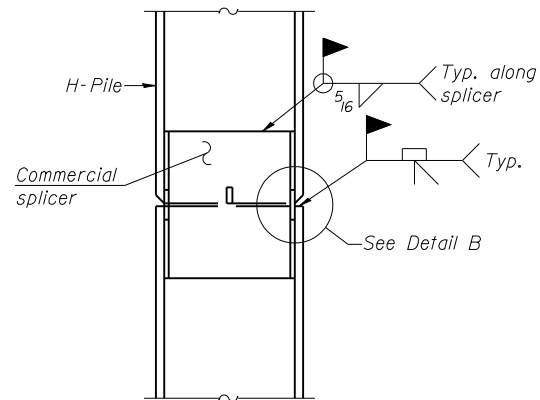
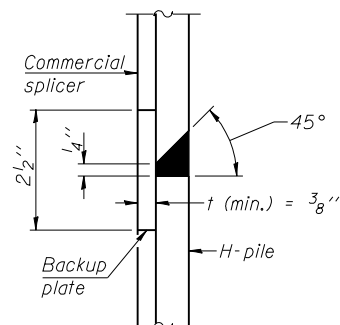


**STEEL PILE TABLE**

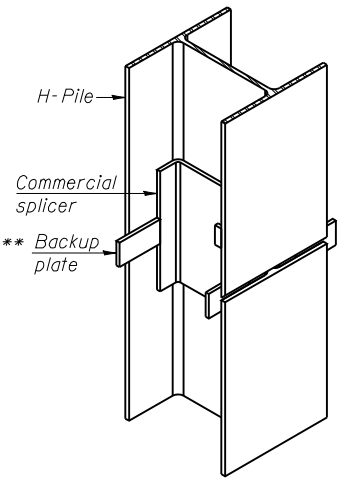
| Designation | Depth d | Flange width br | Web and Flange thickness t | Encasement diameter A |
|-------------|---------|-----------------|----------------------------|-----------------------|
| HP 14x117   | 14 1/4" | 14 7/8"         | 13/16"                     | 30"                   |
| x102        | 14"     | 14 3/4"         | 1/16"                      | 30"                   |
| x89         | 13 7/8" | 14 3/4"         | 5/8"                       | 30"                   |
| x73         | 13 5/8" | 14 5/8"         | 1/2"                       | 30"                   |
| HP 12x84    | 12 1/4" | 12 1/4"         | 1/16"                      | 24"                   |
| x74         | 12 1/8" | 12 1/4"         | 5/8"                       | 24"                   |
| x63         | 12"     | 12 1/8"         | 1/2"                       | 24"                   |
| x53         | 11 3/4" | 12"             | 7/16"                      | 24"                   |
| HP 10x57    | 10"     | 10 1/4"         | 9/16"                      | 24"                   |
| x42         | 9 3/4"  | 10 1/8"         | 7/16"                      | 24"                   |
| HP 8x36     | 8"      | 8 1/8"          | 7/16"                      | 18"                   |



**ELEVATION**

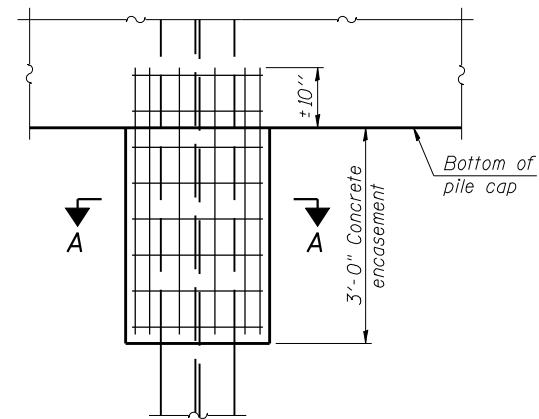


**DETAIL "B"**



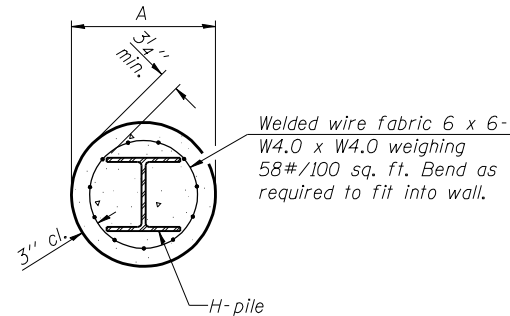
**ISOMETRIC VIEW**

**WELDED COMMERCIAL SPLICE**



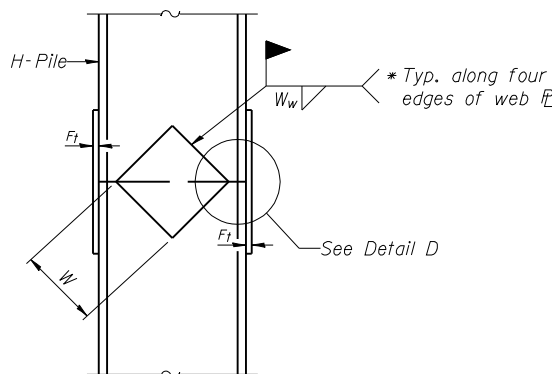
**ELEVATION**

**PILE ENCASEMENT**

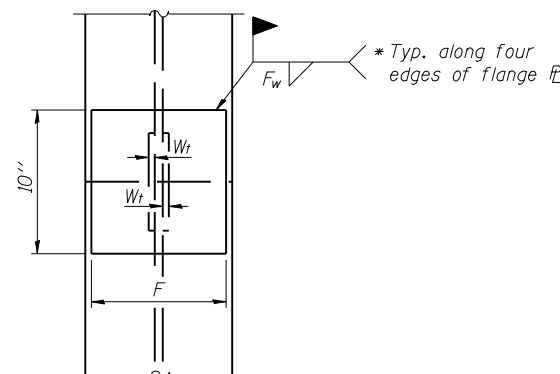


**SECTION A-A**

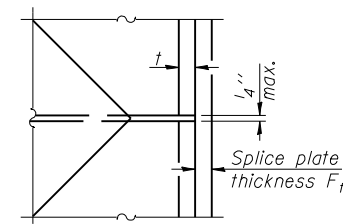
Note:  
Forms for encasement may be omitted when soil conditions permit.



**ELEVATION**



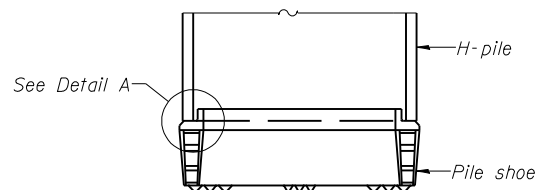
**END VIEW**



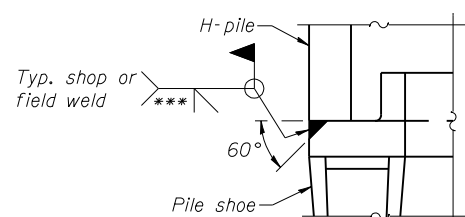
**DETAIL D**

**WELDED PLATE FIELD SPLICE**

| Designation | F       | Ft   | Fw    | W      | Wt   | Ww   |
|-------------|---------|------|-------|--------|------|------|
| HP 14x117   | 12 1/2" | 1"   | 7/8"  | 7 3/4" | 5/8" | 1/2" |
| x102        | 12 1/2" | 7/8" | 3/4"  | 7 3/4" | 5/8" | 1/2" |
| x89         | 12 1/2" | 3/4" | 1/16" | 7 3/4" | 5/8" | 1/2" |
| x73         | 12 1/2" | 5/8" | 9/16" | 7 3/4" | 5/8" | 1/2" |
| HP 12x84    | 10"     | 7/8" | 1/16" | 6 1/2" | 5/8" | 1/2" |
| x74         | 10"     | 7/8" | 1/16" | 6 1/2" | 5/8" | 1/2" |
| x63         | 10"     | 5/8" | 1/2"  | 6 1/2" | 1/2" | 3/8" |
| x53         | 10"     | 5/8" | 1/2"  | 6 1/2" | 1/2" | 3/8" |
| HP 10x57    | 8"      | 3/4" | 9/16" | 5 1/4" | 1/2" | 3/8" |
| x42         | 8"      | 5/8" | 9/16" | 5 1/4" | 1/2" | 3/8" |
| HP 8x36     | 7"      | 5/8" | 7/16" | 4 1/4" | 1/2" | 3/8" |

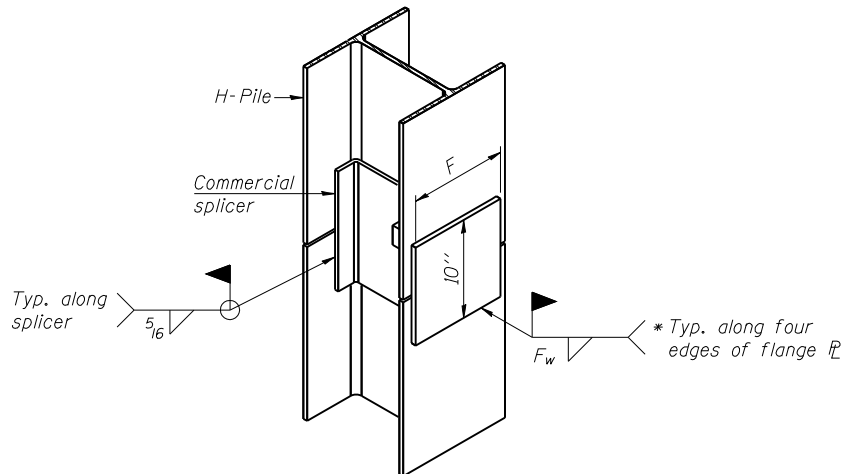


**ELEVATION**



**DETAIL A**

**H-PILE SHOE ATTACHMENT**



**ISOMETRIC VIEW**

**WELDED COMMERCIAL SPLICE ALTERNATE**

- \* Interrupt welds 1/4" from end of web and/or each flange.
- \*\* Remove portions of backup plates that extend outside the flanges.
- \*\*\* Weld size per pile shoe manufacturer (5/16" min.).

Note:  
The steel H-piles shall be according to AASHTO M270 Grade 50.

PRINT DATE: 3/24/2014 12:50:51 PM Z:\10053301\1119 over- Vermilion\edgn\Br-edgn\Final\Plotsheets\092207-70614-023-Pile\_De.dgn

**EFK Moen, LLC**  
Civil Engineering Design  
331 Salem Place, Suite 225  
Fairview Heights, IL 62208  
Phone 618-206-4250

1-27-12

|                              |                  |             |
|------------------------------|------------------|-------------|
| USER NAME = cdl              | DESIGNED - CTW   | REVISIONS - |
| PLOT SCALE = 0.2" = 1' / IN. | CHECKED - CDL    | REVISIONS - |
| PLOT DATE = 3/24/2014        | DRAWN - CTW      | REVISIONS - |
|                              | DATE - 3/24/2014 | REVISIONS - |

**STATE OF ILLINOIS**  
**DEPARTMENT OF TRANSPORTATION**

**HP PILE DETAILS**  
**STRUCTURE NO. 092-0207**

SHEET NO. 29 OF 33 SHEETS

| F.A.P. RTE.               | SECTION | COUNTY    | TOTAL SHEETS | SHEET NO. |
|---------------------------|---------|-----------|--------------|-----------|
| 711                       | 116BR-1 | VERMILION | 84           | 59        |
| CONTRACT NO. 70614        |         |           |              |           |
| ILLINOIS FED. AID PROJECT |         |           |              |           |