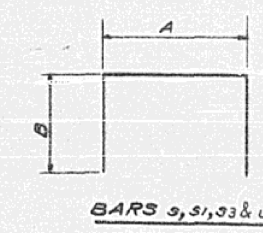
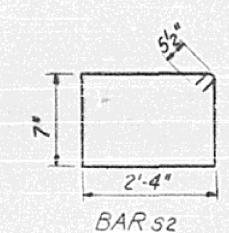
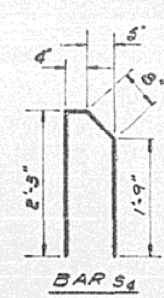
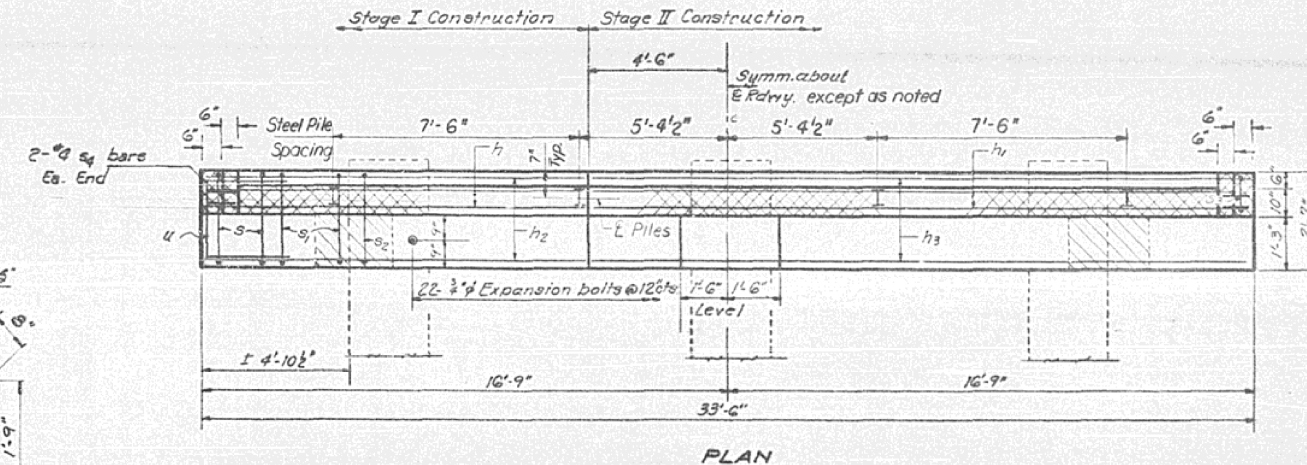
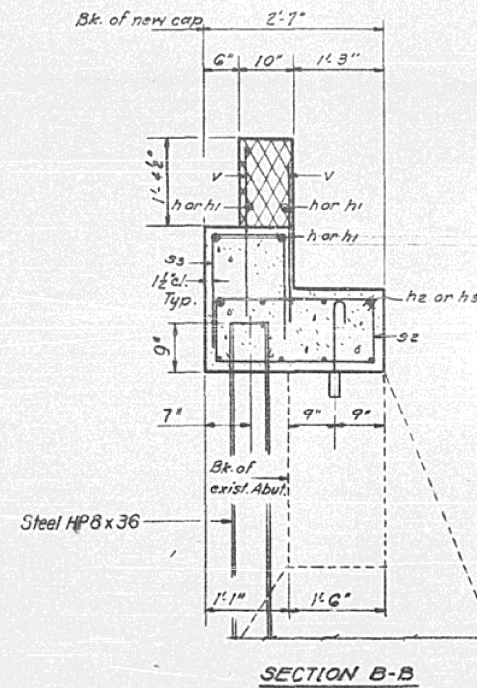
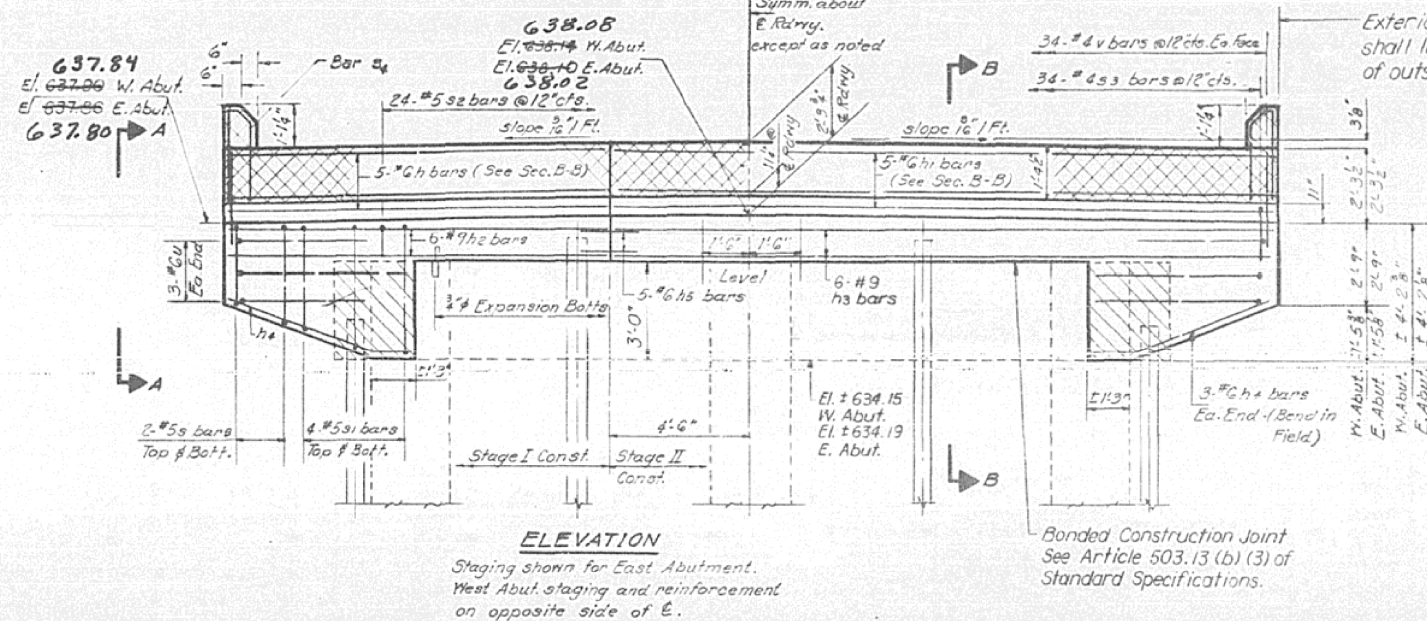
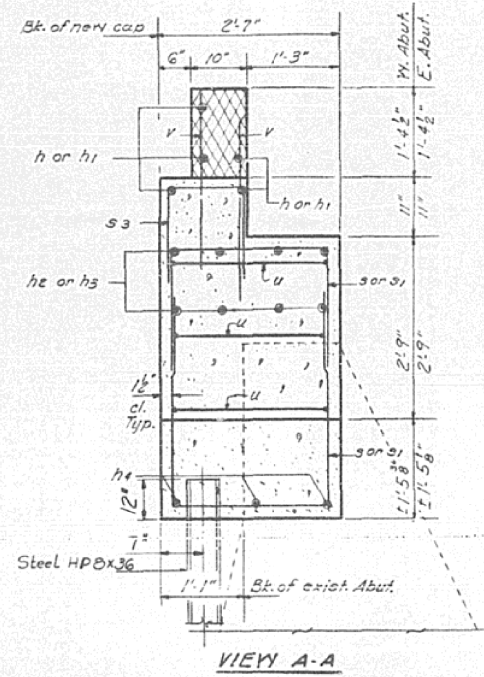


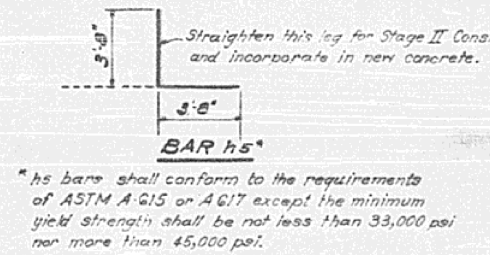
STATE OF ILLINOIS
DEPARTMENT OF TRANSPORTATION

PROJECT NO.	SECTION	COUNTY	TOTAL SHEETS	SHEET NO.
116 BR	VERMILION	16	13	13
SHEETS				



A & B Dimensions

Bar	A	B
s	2'-4"	2'-6"
s1	2'-4"	3'-6"
s3	1'-0"	1'-9"
u	2'-2"	6'-0"



Exterior face of Hatched Curb shall line up with exterior face of outside beams. (Typ. Ea. End)

Bonded Construction Joint See Article 503.13 (b) (3) of Standard Specifications.

Staging shown for East Abutment. West Abut. staging and reinforcement on opposite side of E.

TWO ABUTMENTS
BILL OF MATERIAL

Bar	No.	Size	Length	Shape
h	10	#6	12'-0"	—
h1	10	#6	2'-0"	—
h2	12	#9	12'-0"	—
h3	12	#9	2'-0"	—
h4	12	#5	6'-0"	—
h5	10	#6	7'-4"	L
s	16	#5	7'-4"	□
s1	32	#5	9'-4"	□
s2	48	#5	6'-9"	□
s3	68	#4	4'-0"	□
s4	8	#4	5'-0"	□
u	12	#6	14'-2"	L
v	196	#4	2'-9"	—
Reinforcement Bars				Lbs. 3,540
Class II Concrete				Cu. Yds. 20.0
Concrete Removal				Cu. Yds. 2
3/8" Expansion Bolts				Each 44
Furnishing Steel				Lin. Ft. 108
H Piles HP8 x 36				

Notes:
Hatched area indicates concrete removal. Cross hatched area to be poured after beams are in place.
Expansion bolts shall be anchored in sound concrete.
All edges shall have standard 3/4" chamfer except as noted.
Clean, straighten existing reinforcement and incorporate in new concrete.
PILE DATA
Type - Steel H Piles HP8 x 36
No. Req'd. - 6 + 2 Test Piles, 1 at each abutment.
Length - 13'
Piles shall be placed in holes precored to the top of existing footing. After placing the piles the precored holes shall be filled with sand. Cost incidental to furnishing Steel H Piles.
The piles shall meet the requirements of AASHTO M222 - Grade 50 Steel.

ABUTMENTS
FA.R.T. 711 SEC. 116 BR
VERMILION CO.
STA. 730+96

FOR INFORMATIONAL PURPOSES ONLY

DESIGNED: [Signature]
CHECKED: Suresh T. Desai
DRAWN: [Signature]
CHECKED: S.D.

EXAMINED: [Signature] March 13 10 73
PASSED: [Signature]
APPROVED: [Signature]

PRINT DATE: 1/13/2014

EFK Moen, LLC
Civil Engineering Design
331 Salem Place, Suite 225
Fairview Heights, IL 62208
Phone 618-206-4250

USER NAME = detersbj	DESIGNED - CTW	REVISED -
PLOT SCALE = 0:2.0000 1' = 1"	CHECKED - CDL	REVISED -
PLOT DATE = 1/13/2014	DRAWN - CTW	REVISED -
	DATE - 1/13/2014	REVISED -

STATE OF ILLINOIS
DEPARTMENT OF TRANSPORTATION

EXISTING STRUCTURE PLANS (3 OF 5)
STRUCTURE NO. 092-0065

SHEET NO. 3 OF 5 SHEETS

F.A.P. RTE.	SECTION	COUNTY	TOTAL SHEETS	SHEET NO.
711	116BR-1	VERMILION	84	66
CONTRACT NO. 70614				

ILLINOIS FED. AID PROJECT