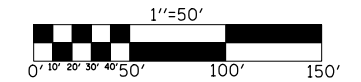


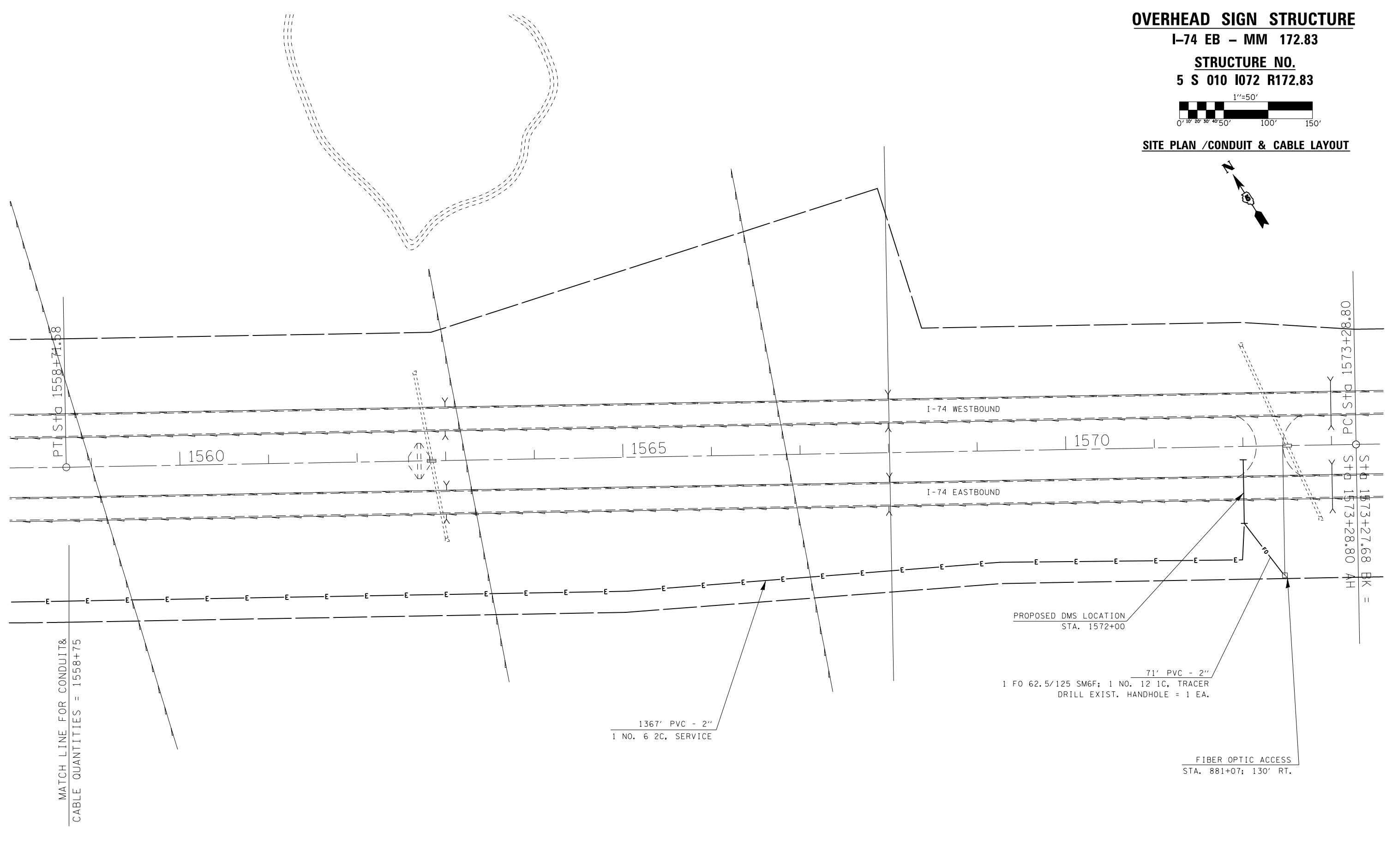
OVERHEAD SIGN STRUCTURE

I-74 EB - MM 172.83

**STRUCTURE NO.
5 S 010 I072 R172.83**



SITE PLAN /CONDUIT & CABLE LAYOUT



PROPOSED DMS LOCATION
STA. 1572+00

71' PVC - 2"
1 FO 62.5/125 SM6F; 1 NO. 12 1C, TRACER
DRILL EXIST. HANDHOLE = 1 EA.

1367' PVC - 2"
1 NO. 6 2C, SERVICE

FIBER OPTIC ACCESS
STA. 881+07; 130' RT.

MATCH LINE FOR CONDUIT &
CABLE QUANTITIES = 1558+75

FILE NAME = c:\pw\work\pwidot\biggsrd\d0340463\PTZ	USER NAME = biggsrd camera plans.dgn	DESIGNED - DRAWN -	REVISED - REVISED -	STATE OF ILLINOIS DEPARTMENT OF TRANSPORTATION	SCALE: SHEET OF SHEETS STA. TO STA.	F.A.P. RTE. VAR.	SECTION FY2014 ITS-1	COUNTY CHAMPAIGN	TOTAL SHEETS 74	SHEET NO. 17	
\$MODELNAME\$	PLOT DATE = 2/7/2014	CHECKED - DATE -	REVISED - REVISED -			CONTRACT NO.		ILLINOIS FED. AID PROJECT			