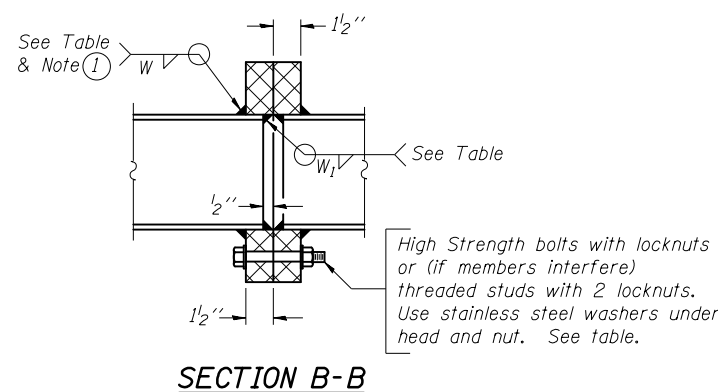


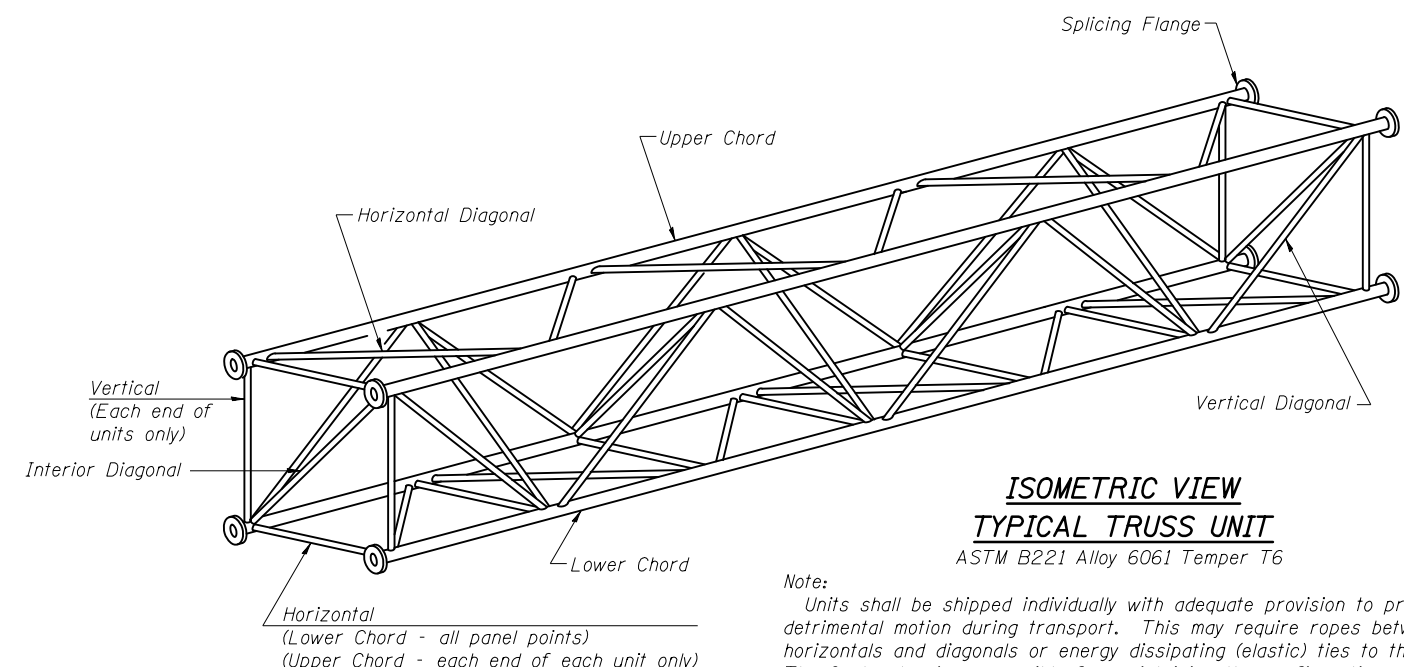
TRUSS UNIT TABLE

Structure Number	Station	Design Truss Type	Exterior Units (2)			Interior Unit				Upper & Lower Chord		Verticals; Horizontals; Vertical, Horizontal, and Interior Diagonals		Camber at Midspan	Splicing Flange					
			No. Panels per Unit	Unit Lgth.(L _e)	Panel Lgth.(P)	No. Req'd.	No. Panels per Unit	Unit Lgth.(L _i)	Panel Lgth.(P)	O.D.	Wall	O.D.	Wall		Bolts		Weld Sizes		A	B
															No./Splice	Dia.	W	W ₁		
5 S 010 I057 R226.45	472+50	III-A	7	37'-9"	5'-1 1/2"	—	—	—	—	7"	5/16"	3 1/4"	5/16"	1"	6	1"	7/16"	5/16"	11 1/2"	15"
5 S 010 I057 L242.78	890+96	III-A	7	38'-9 1/4"	5'-3 1/4"	—	—	—	—	7"	5/16"	3 1/4"	5/16"	1"	6	1"	7/16"	5/16"	11 1/2"	15"
5 S 010 I074 R172.83	1572+00	III-A	5	28'-0 1/4"	5'-2 3/4"	1	6	32'-7 1/2"	5'-2 3/4"	7"	5/16"	3 1/4"	5/16"	1 1/2"	6	1"	7/16"	5/16"	11 1/2"	15"
5 S 010 I074 L189.05	593+12	III-A	7	37'-9"	5'-1 1/2"	—	—	—	—	7"	5/16"	3 1/4"	5/16"	1"	6	1"	7/16"	5/16"	11 1/2"	15"
5 S 010 I072 R178.29	1778+15	III-A	6	30'-10 1/2"	4'-10"	—	—	—	—	7"	5/16"	3 1/4"	5/16"	3/4"	6	1"	7/16"	5/16"	11 1/2"	15"



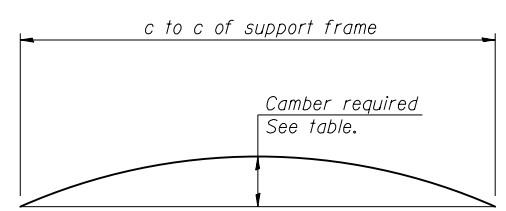
SECTION B-B

① Splicing Flanges shall be attached to each truss unit with the truss shop assembled to camber shown. Truss units shall be in proper alignment and flange surfaces shall be shop bolted into full contact before welding. Sufficient external welds or tacks shall be made to secure flanges until remaining welds are made after disassembly. Adjacent flanges shall be "match marked" to insure proper field assembly.



ISOMETRIC VIEW TYPICAL TRUSS UNIT
ASTM B221 Alloy 6061 Temper T6

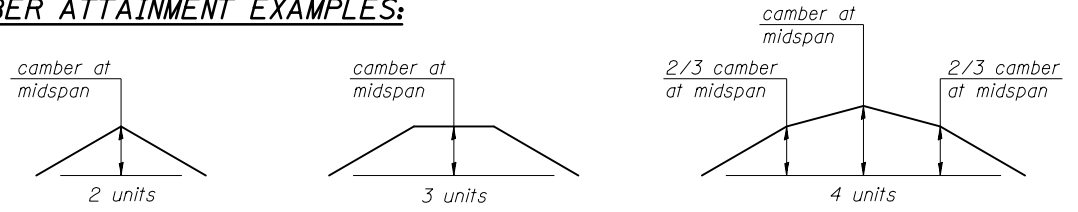
Note: Units shall be shipped individually with adequate provision to prevent detrimental motion during transport. This may require ropes between horizontals and diagonals or energy dissipating (elastic) ties to the vehicle. The Contractor is responsible for maintaining the configuration and protection of the units.



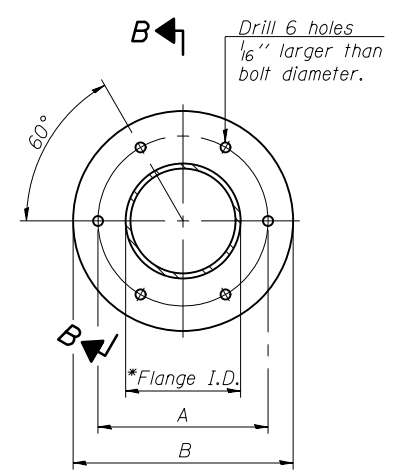
CAMBER DIAGRAM

Camber curve shown is theoretical. Actual camber attained by slope changes at splices between units.

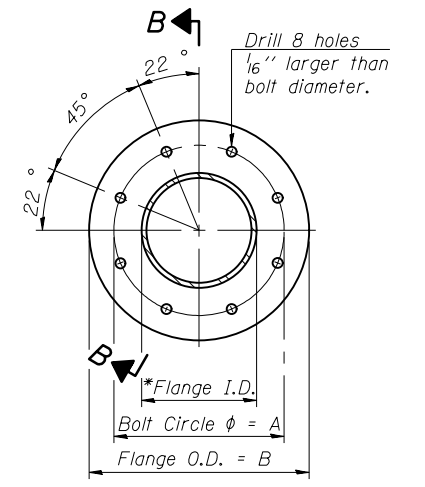
CAMBER ATTAINMENT EXAMPLES:



Camber shown is for fabrication only, measured with truss fully supported. (No-load condition)



TRUSS TYPES I-A, II-A, & III-A



TRUSS TYPES II-A & III-A
SPLICING FLANGES

ASTM B221, Alloy 6061-T6 or ASTM B209, Alloy 6061-T651
*To fit O.D. of Chord with maximum gap of 1/16".

OS4-A-2

6-1-12

FILE NAME =	USER NAME = biggsrd	DESIGNED -	REVISED -	STATE OF ILLINOIS DEPARTMENT OF TRANSPORTATION	OVERHEAD SIGN STRUCTURES - ALUMINUM TRUSS DETAILS FOR TRUSS TYPES I-A, II-A AND III-A	F.A.P. RTE.	SECTION	COUNTY	TOTAL SHEETS	SHEET NO.	
ei:\pw\work\p\idot\biggsrd\0340463\PTZ	camera plans.dgn	DRAWN -	REVISED -			VAR.	FY2014 ITS-1	CHAMPAIGN	74	32	
MODELNAME	PLOT SCALE = 40.0000' / in.	CHECKED -	REVISED -			CONTRACT NO. 70A26					
	PLOT DATE = 2/7/2014	DATE -	REVISED -			SCALE:	SHEET	OF	SHEETS	STA.	TO