

B I L L O F M A T E R I A L S

I-74 & LINCOLN AVE.

**PTZ CAMERA INSTALLATION &
FIBER OPTIC CONNECTION**

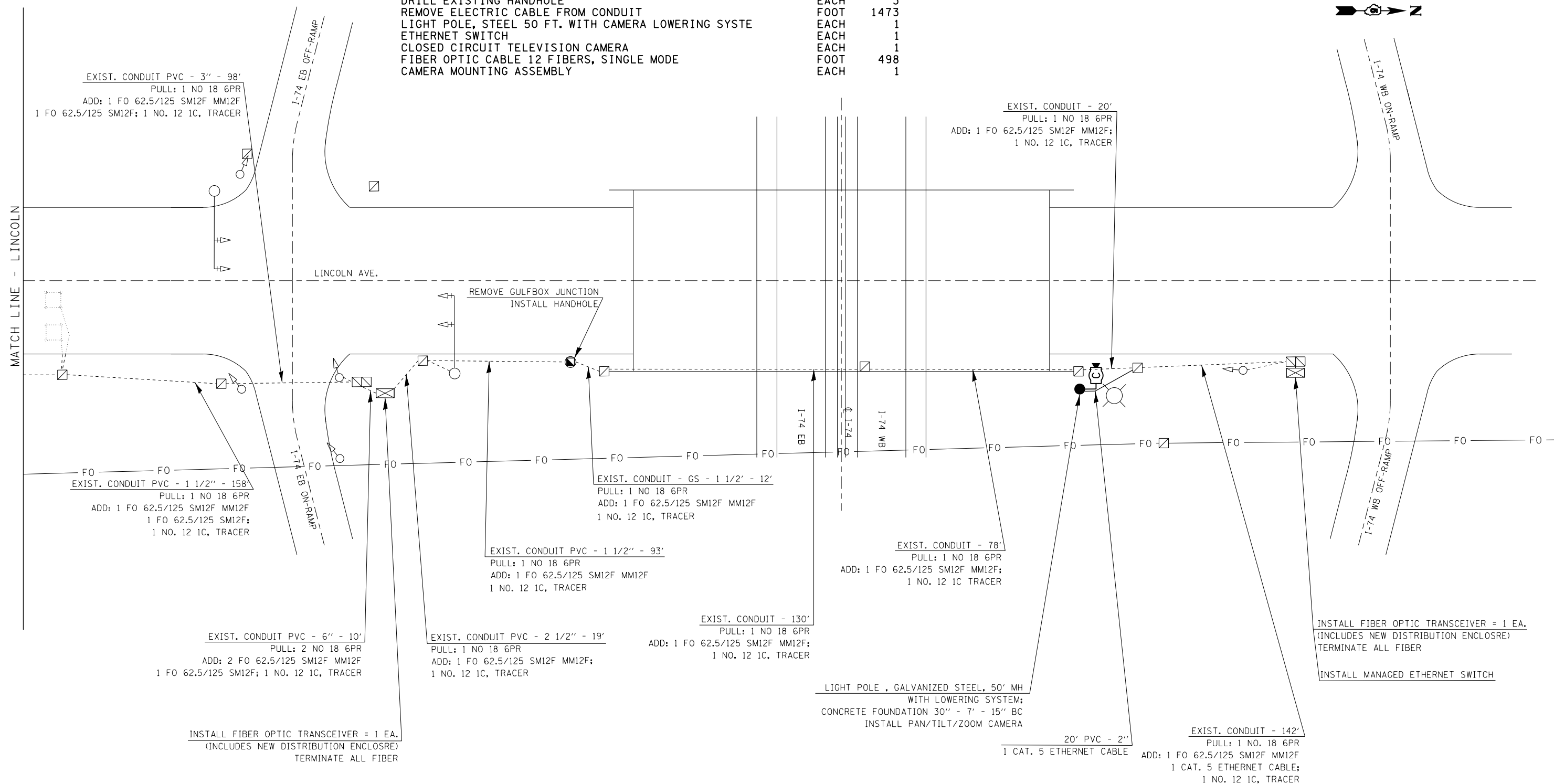
LINCOLN AVE.
&
I-74

(NOT TO SCALE)

CAMERA & CONDUIT /CABLE LAYOUT



ITEM	UNIT	QUANTITY
UNDERGROUND CONDUIT, PVC, 2" DIA.	FOOT	80
HANDHOLE	EACH	1
GULFBOX JUNCTION REMOVAL	EACH	1
LIGHT POLE FOUNDATION, 30" DIAMETER	FOOT	7
TRANSCEIVER - FIBER OPTIC	EACH	3
FIBER OPTIC CABLE IN CONDUIT, NO. 62.5/125, MM12F SM12F	FOOT	1495
ELECTRIC CABLE IN CONDUIT, TRACER, NO. 12 1C	FOOT	1032
DRILL EXISTING HANDHOLE	EACH	3
REMOVE ELECTRIC CABLE FROM CONDUIT	FOOT	1473
LIGHT POLE, STEEL 50 FT. WITH CAMERA LOWERING SYSTE	EACH	1
ETHERNET SWITCH	EACH	1
CLOSED CIRCUIT TELEVISION CAMERA	EACH	1
FIBER OPTIC CABLE 12 FIBERS, SINGLE MODE	FOOT	498
CAMERA MOUNTING ASSEMBLY	EACH	1



FILE NAME =	USER NAME = biggsrd	DESIGNED -	REVISED -	STATE OF ILLINOIS DEPARTMENT OF TRANSPORTATION	SCALE:	SHEET	OF	SHEETS	STA.	TO STA.	F.A.P. RTE.	SECTION	COUNTY	TOTAL SHEETS	SHEET NO.
et:\pw\work\p\idot\biggsrd\0340463\PTZ	camera plans.dgn	DRAWN -	REVISED -								VAR.	FY2014 ITS-1	CHAMPAIGN	74	41
\$MODELNAME\$	PLOT SCALE = 100.0000' / 1in.	CHECKED -	REVISED -								CONTRACT NO. 70A26				
	PLOT DATE = 2/7/2014	DATE -	REVISED -								ILLINOIS FED. AID PROJECT				