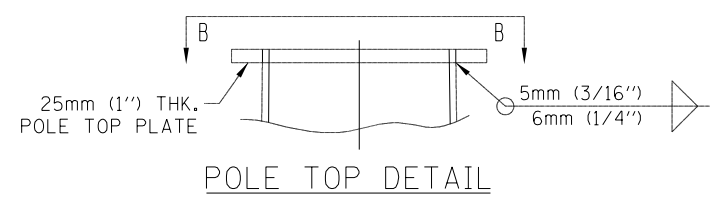


- NOTES:**
- 1) POLE TUBE ASTM A572, GR. 50 MIN.
 - 2) BASE PLATE ASTM A572, GR. 50.
 - 3) HANDHOLE FRAME ASTM A500, GR B TUBING.
 - 4) HANDHOLE COVER ASTM A36 MIN.
 - 5) ANCHOR BOLTS ASTM F1554, GR. 55, TOP H.D. GALVANIZED TO ASTM A153.
 - 6) ANCHOR NUTS ASTM A563, GR. DH or A194, GR. 2H, H.D. GALVANIZED TO ASTM A153.
 - 7) ANCHOR WASHERS ASTM F436, TYPE 1, H.D. GALVANIZED TO ASTM A153.
 - 8) TOP PLATE ASTM A572, GR. 50.
 - 9) TENON ASTM A53, GR. B PIPE.
 - 10) TENON SLEEVE ASTM A512 OR A513.
 - 11) WELDING AWS D1.1.
 - 12) FINISH H.D. GALVANIZED TO ASTM A123. CAST ALUMINUM OR GALVANIZED STEEL.
 - 13) POLE CAP
 - 14) VALUE STRUCTURES, INC., IS CERTIFIED BY A.I.S.C. FOR CONVENTIONAL STEEL BUILDING STRUCTURES, SIMPLE STEEL CONVENTIONAL STEEL BUILDING STRUCTURES, SIMPLE STEEL BRIDGES, WITH FRACTURE CRITICAL ENDORSEMENT.

DESIGN NOTE:
 CCTV POLES AND ANCHORAGE ARE ALL DESIGNED TO ACCEPT MAXIMUM LOADING FROM CAMERAS, STATIONARY ARMS AND LOWERING DEVICES. THE COMBINATION OF CAMERA AND LOWERING DEVICE ASSEMBLY OF 3.0 SQ. FT. EPA AND 130 LBS DEADLOAD RESULTING IN THE LARGEST AREA AND WEIGHT FOR POLE DESIGN TO THE FOLLOWING LOADING CASES; ALL PER AASHTO 2001 STANDARD SPECIFICATIONS FOR STRUCTURAL SUPPORTS FOR HIGHWAY SIGNS, LUMINAIRES, AND TRAFFIC SIGNALS, 4TH EDITION.

LOAD CASE 1
 80 MPH AASHTO

LOAD CASE 2
 30 MPH SUSTAINED WIND FOR MAXIMUM HORIZONTAL DEFLECTION @ POLE TOP NOT TO EXCEED 1".



WIND VELOCITY: 30 MPH W/NO GUST
 1" MAXIMUM POLE TOP DEFLECTION

| | | | | | | | | | | | |
|---|----------------------|------------|-----------|---|--|---------------------------|--------------|-----------|--------------|-----------|--|
| FILE NAME = | USER NAME = biggsrd | DESIGNED - | REVISED - | STATE OF ILLINOIS DEPARTMENT OF TRANSPORTATION | SERVICE INSTALLATION AND POLE MOUNTED CCTV DETAIL WITH CAMERA LOWERING DEVICE | F.A.P. RTE. | SECTION | COUNTY | TOTAL SHEETS | SHEET NO. | |
| ci:\pw\work\p\idot\biggsrd\d0340463\PTZ | camera plans.dgn | DRAWN - | REVISED - | | | VAR. | FY2014 ITS-1 | CHAMPAIGN | 74 | 73 | |
| \$MODELNAME\$ | PLOT DATE = 2/7/2014 | CHECKED - | REVISED - | | | CONTRACT NO. 70A26 | | | | | |
| | | DATE - | REVISED - | | | ILLINOIS FED. AID PROJECT | | | | | |