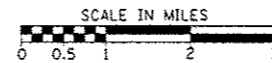
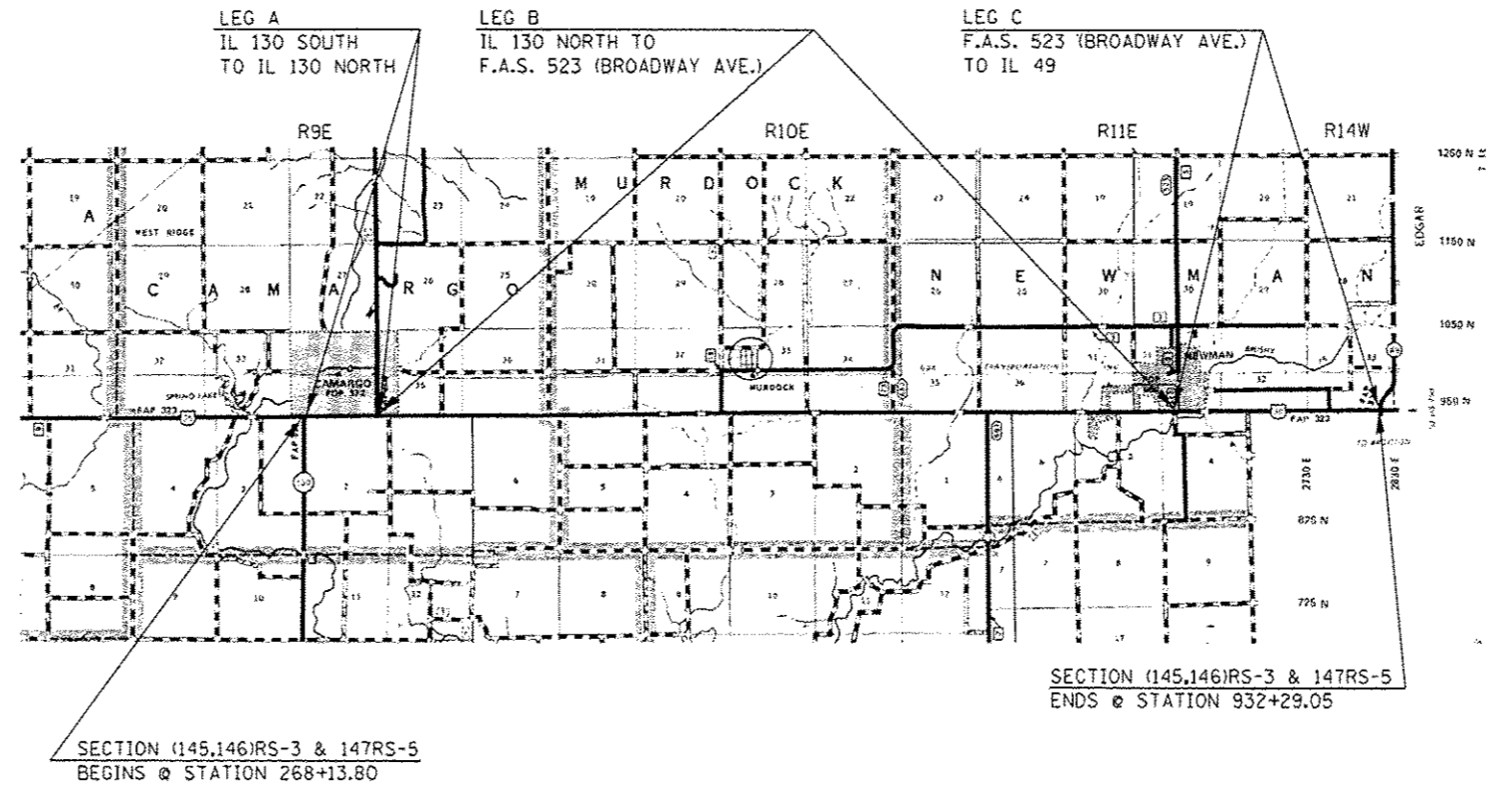


LOCATION MAP #3
US 36 FROM IL 130 (S) TO IL 49
DOUGLAS COUNTY

ADT

LOCATION 3: AVERAGE ADT (2011)
 LEG A: 3950
 LEG B: 2450
 LEG C: 2050



GROSS LENGTH = 66,415.25 FT. = 12.579 MILES
 NET LENGTH = 65,806.63 FT. = 12.463 MILES

FILE NAME =	USER NAME = ceerlock_d	DESIGNED -	REVISED -	STATE OF ILLINOIS DEPARTMENT OF TRANSPORTATION	LOCATION MAP #3	F.A. RTE.	SECTION	COUNTY	TOTAL SHEETS	SHEET NO.
c:\p\work\p\adot\ceerlock_d\0301332\03	78032-ah-100.mxd	DRAWN -	REVISED -			VAR.	*	VARIOUS	41	5
	PLOT SCALE = 40,0000 1/ in.	CHECKED -	REVISED -			*05 CRACK & JOINT SEAL 2014-1		CONTRACT NO. 70A32		
#MODELNAME#	PLOT DATE = 2/14/2014	DATE -	REVISED -			SCALE: N/A	SHEET 1 OF 1 SHEETS	STA. TO STA.	ILLINOIS FED. AID PROJECT	