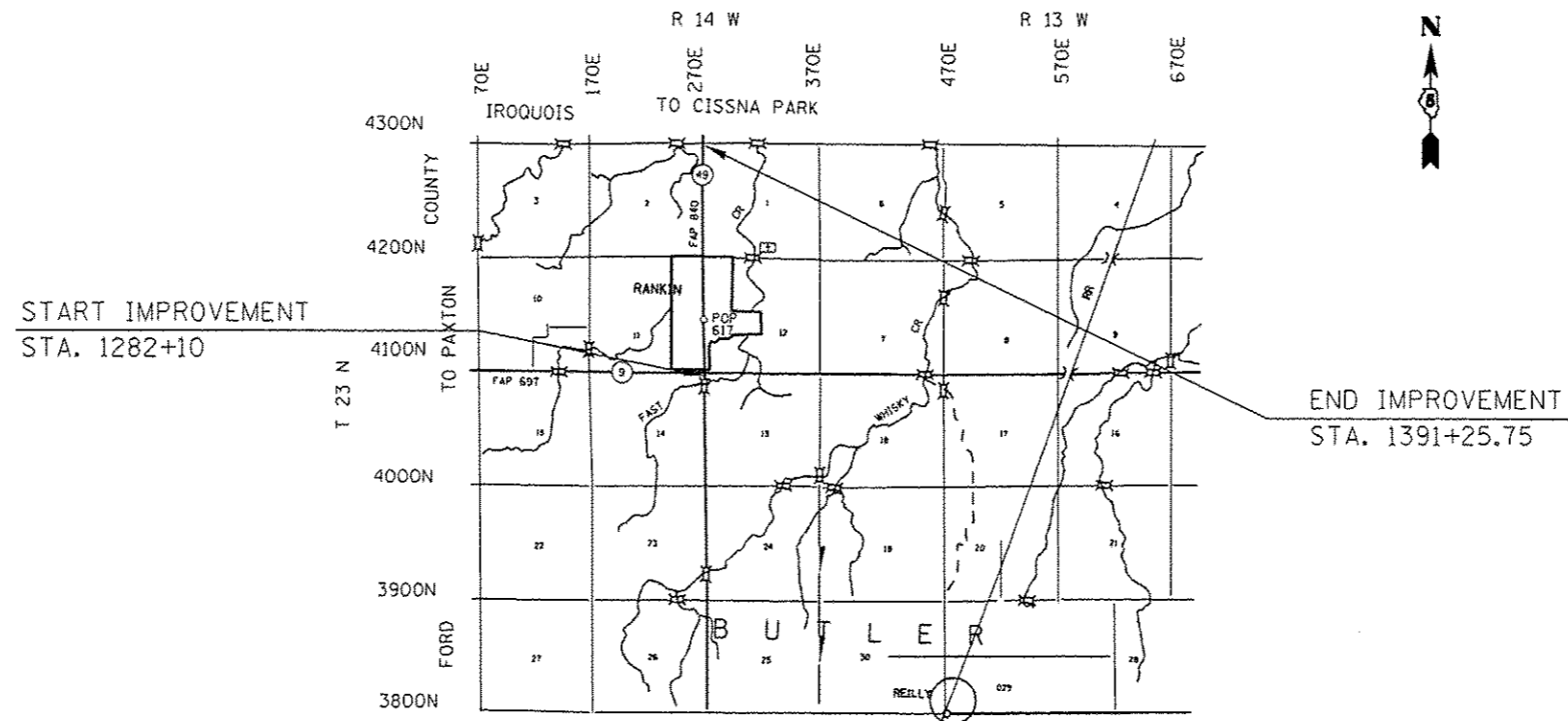


# ADT

LOCATION 6: AVERAGE ADT = 1250 (2011)

## LOCATION MAP #6 IL 49 FROM IROQUOIS CO. LINE TO FAST CREEK VERMILION COUNTY



TOTAL LENGTH = 10,915.75 ft = 2.067 miles  
NET LENGTH = 10,915.75 ft = 2.067 miles

FILE NAME *	USER NAME * oerlockjd	DESIGNED -	REVISED -	<b>STATE OF ILLINOIS DEPARTMENT OF TRANSPORTATION</b>	<b>LOCATION MAP #6</b>	F.A. RTE.	SECTION	COUNTY	TOTAL SHEETS	SHEET NO.	
er\p\work\p\idat\oerlockjd\031332\031332.dgn	78A32-sht-loc.mxd	DRAWN -	REVISED -			VAR.	*	VERMILION	41	8	
	PLOT SCALE * 40.0000 1/ in.	CHECKED -	REVISED -			*05 CRACK & JOINT SEAL 2014-1 CONTRACT NO. 70A32					
	PLOT DATE * 2/14/2014	DATE -	REVISED -			ILLINOIS FED. AID PROJECT					
						SCALE: N/A		SHEET 1 OF 1 SHEETS		STA. TO STA.	