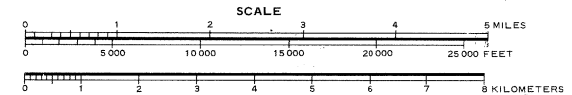
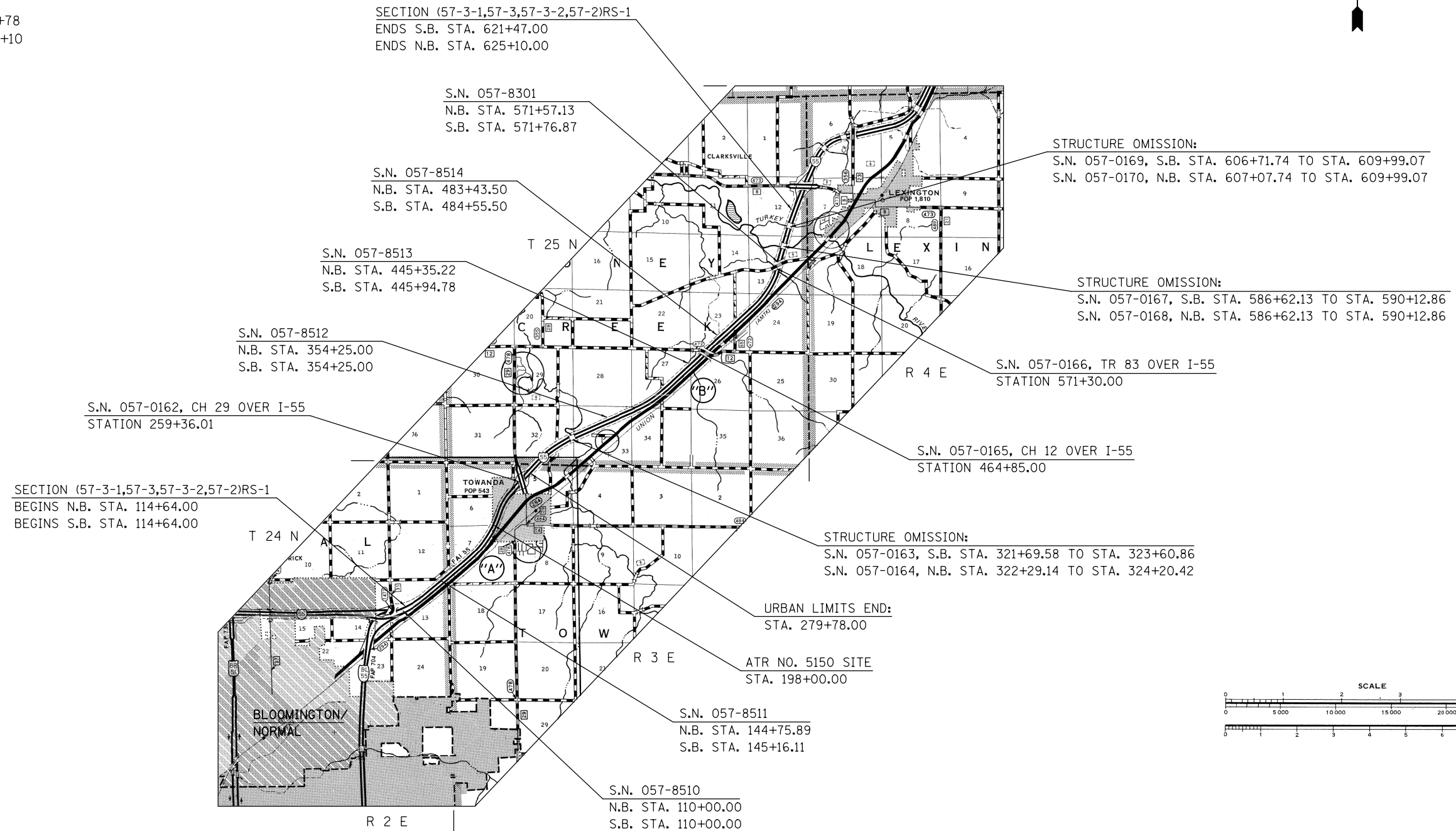


ADT

I-55 FROM WEST OF BUS 55 NORTH TO LEXINGTON MCLEAN COUNTY

LOCATION #1 F. A. I ROUTE 55 (I 55)
FROM WEST OF BUS 55 NORTH TO LEXINGTON
LEG A LEG B
AVERAGE ADT: 25,800 23,500

URBAN: STA. 114+64 TO STA 279+78
RURAL: STA. 279+78 TO STA 625+10



TOTAL LENGTH OF SECTION & PROJECT = 51,046.00 FEET = 9.668 MILES
NET LENGTH OF SECTION & PROJECT = 50,212.66 FEET = 9.510 MILES
(NOTE: LENGTHS ARE CALCULATED ALONG NORTHBOUND LANE)

FILE NAME =	USER NAME = ceorlockjd	DESIGNED -	REVISED -	STATE OF ILLINOIS DEPARTMENT OF TRANSPORTATION	LOCATION MAP #1			F.A. RTE.	SECTION	COUNTY	TOTAL SHEETS	SHEET NO.
et:\pw\work\p\dot\ceorlockjd\0380704\0570A33-sht-loc maps.dgn	PLOT SCALE = 40.0000' / in.	DRAWN -	REVISED -					VAR.	.	**	38	3
	PLOT DATE = 2/14/2014	CHECKED -	REVISED -		SCALE: N/A	SHEET NO. 1 OF 1 SHEETS	STA. TO STA.	*D5 CRACK & JOINT SEAL 2014-2 CONTRACT NO. 70A33				
		DATE -	REVISED -		**MCLEAN & PIATT COUNTIES ILLINOIS FED. AID PROJECT							