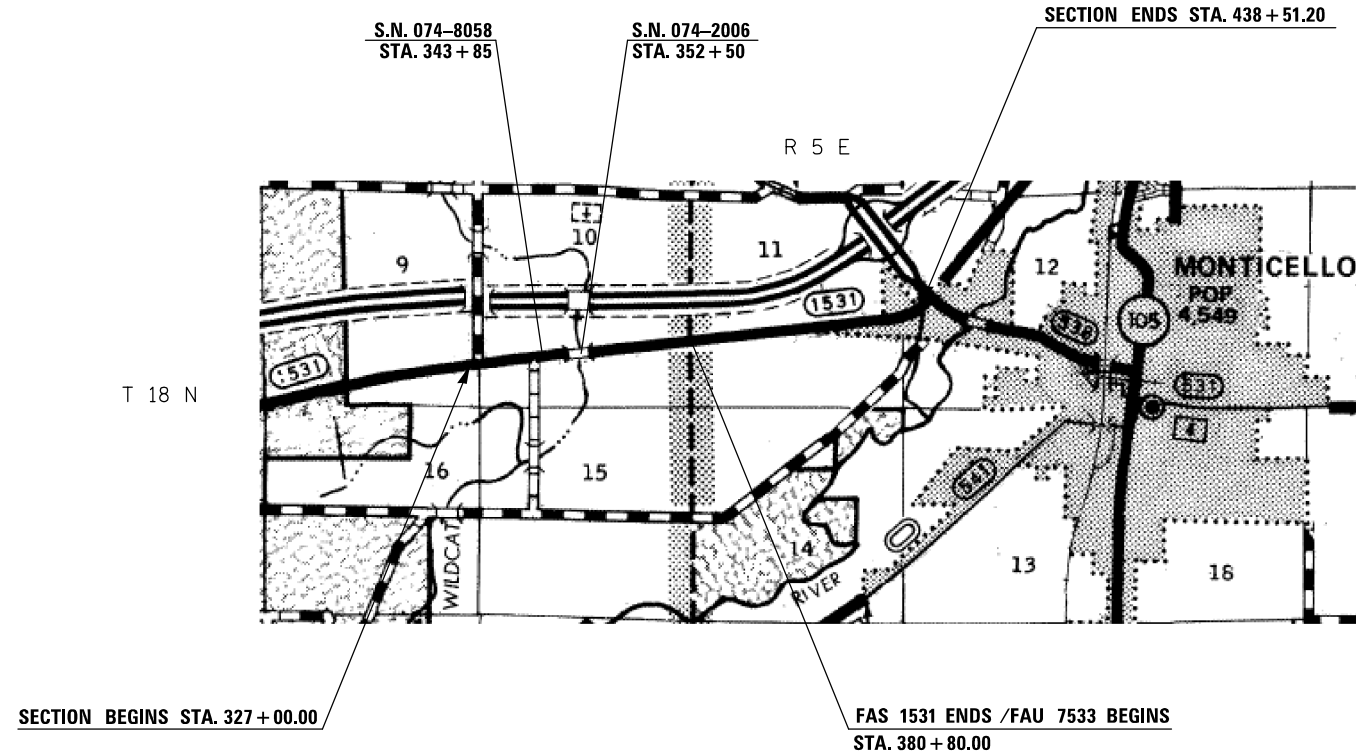


ADT

OLD IL 47 FROM BRIDGE STREET IN MONTICELLO WEST PAST STORAGE PIATT COUNTY

LOCATION #5 FAS ROUTE 7533 (CISCO - MONTICELLO RD)
FROM BRIDGE STREET IN MONTICELLO WEST PAST STORAGE
AVERAGE ADT = 2000

URBAN: STA. 327+00 TO STA 380+80
RURAL: STA. 380+80 TO STA 438+51.2



GROSS LENGTH = 11,151.2 FT. = 2.112 MILE
NET LENGTH = 11,151.2 FT. = 2.112 MILE



FILE NAME =	USER NAME = ceerlockjd	DESIGNED -	REVISED -
ei:\pwork\pwork\ceerlockjd\0380704\0570A33-sht-loc maps.dgn		DRAWN -	REVISED -
	PLOT SCALE = 40.0000' / in.	CHECKED -	REVISED -
	PLOT DATE = 2/14/2014	DATE -	REVISED -

STATE OF ILLINOIS
DEPARTMENT OF TRANSPORTATION

LOCATION MAP #5

SCALE: N/A SHEET NO. 1 OF 1 SHEETS STA. TO STA.

**MCLEAN & PIATT COUNTIES				
F.A. RTE.	SECTION	COUNTY	TOTAL SHEETS	SHEET NO.
VAR.	.	**	38	7
*D5 CRACK & JOINT SEAL 2014-2			CONTRACT NO. 70A33	
ILLINOIS FED. AID PROJECT				