

STATE OF ILLINOIS
 DEPARTMENT OF TRANSPORTATION
 DIVISION OF HIGHWAYS

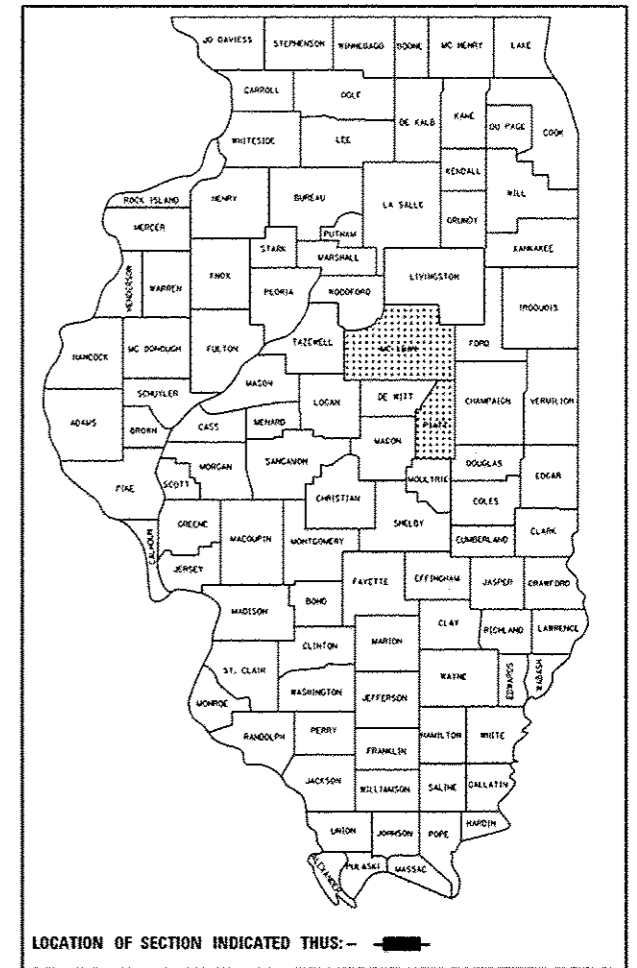
**PROPOSED
 HIGHWAY PLANS**

VARIOUS ROUTES
 SECTION D5 CRACK & JOINT SEAL 2014-2
 PROJECT
 CRACK AND JOINT SEALING
 MCLEAN & PIATT COUNTIES
 C-95-024-13
 (ROUT & SEAL WEST FIELD AREA)

F.A. R.T.E. VAR.	SECTION	COUNTY	TOTAL SHEETS	SHEET NO.
		**	38	1

*D5 CRACK & JOINT SEAL 2014-2
 **MCLEAN & PIATT

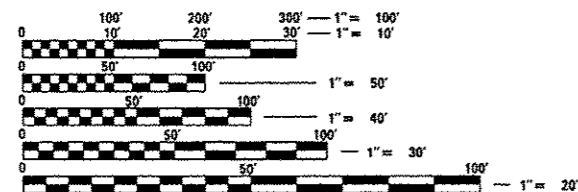
D-95-024-13



FOR INDEX OF SHEETS, SEE SHEET NO. 2
 FOR LOCATION MAPS, SEE SHEETS NOS. 3-7
 FOR SUMMARY OF QUANTITIES, SEE SHEET NO. 9

ADT

SEE LOCATION MAPS, SHEETS 3-7



FULL SIZE PLANS HAVE BEEN PREPARED USING STANDARD ENGINEERING SCALES. REDUCED SIZED PLANS WILL NOT CONFORM TO STANDARD SCALES. IN MAKING MEASUREMENTS ON REDUCED PLANS, THE ABOVE SCALES MAY BE USED.

J.U.L.I.E.
 JOINT UTILITY LOCATION INFORMATION FOR EXCAVATION
 1-800-892-0123
 OR 811

PROJECT ENGINEER: NANCY FASIG
 DESIGNER: ISRAEL EMMANUEL

CONTRACT NO. 70A33

FOR LOCATION MAPS, SEE SHEETS 3-7

STATE OF ILLINOIS
 DEPARTMENT OF TRANSPORTATION
 DIVISION OF HIGHWAYS

SUBMITTED 02 13 20 14

Joseph E. Crane (SEAL)
 DEPUTY DIRECTOR OF HIGHWAYS, REGION ENGINEER
March 21 20 14

John D. Baranzelli P.E. (SEAL)
 acting ENGINEER OF DESIGN AND ENVIRONMENT
March 21 20 14

Ones Osman P.E. (SEAL)
 DIRECTOR OF HIGHWAYS, CHIEF ENGINEER

**PRINTED BY THE AUTHORITY
 OF THE STATE OF ILLINOIS**