

STATE OF ILLINOIS
DEPARTMENT OF TRANSPORTATION
DIVISION OF HIGHWAYS

PROPOSED
HIGHWAY PLANS

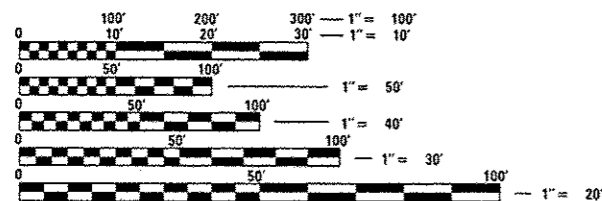
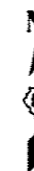
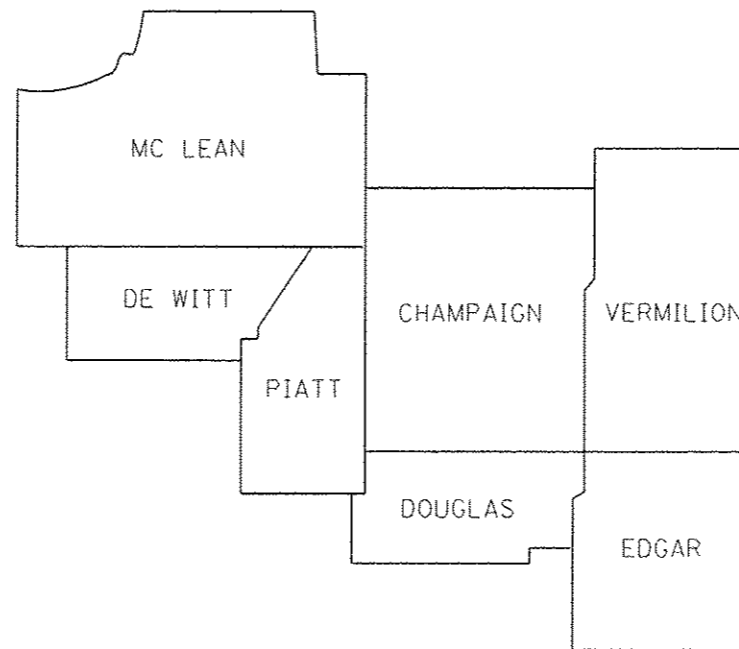
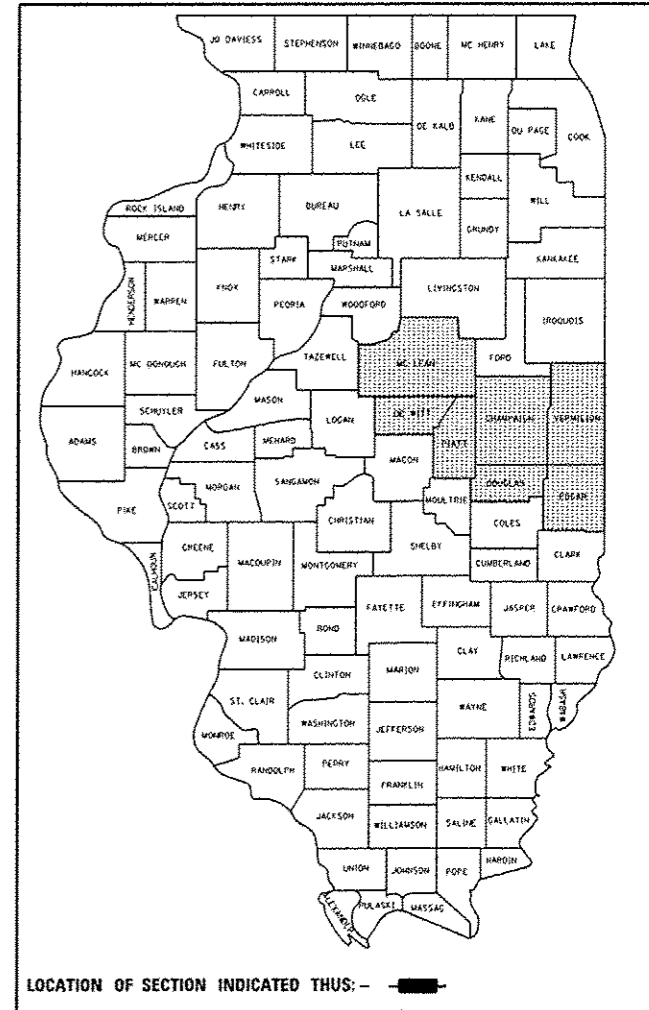
VARIOUS ROUTES
SECTION D5 GUARDRAIL & FENCE REPAIR-2015
GUARDRAIL & FENCE REPAIR
VARIOUS COUNTIES

C-95-015-14

FOR INDEX OF SHEETS, SEE SHEET NO. 2
 FOR SUMMARY OF QUANTITIES, SEE SHEET NO. 3-6

F.A. RTE.	SECTION	COUNTY	TOTAL SHEETS	SHEET NO.
VAR.	*	VARIOUS	10	1
		ILLINOIS	CONTRACT NO. 70A59	

D-95-015-14



FULL SIZE PLANS HAVE BEEN PREPARED USING STANDARD ENGINEERING SCALES. REDUCED SIZED PLANS WILL NOT CONFORM TO STANDARD SCALES. IN MAKING MEASUREMENTS ON REDUCED PLANS, THE ABOVE SCALES MAY BE USED.

J.U.L.I.E.
 JOINT UTILITY LOCATION INFORMATION FOR EXCAVATION
 1-800-892-0123
 OR 811

PROJECT ENGINEER JASON STULTS
 PHONE NUMBER: (217) 465-4181

CONTRACT NO. 70A59

STATE OF ILLINOIS
 DEPARTMENT OF TRANSPORTATION
 DIVISION OF HIGHWAYS

SUBMITTED January 30, 2014
Joseph E. Crowe
 DEPUTY DIRECTOR OF HIGHWAYS, REGION ENGINEER

March 21, 2014
John D. Baranzelli, P.E.
 acting ENGINEER OF DESIGN AND ENVIRONMENT

March 21, 2014
Omer Osman, P.E.
 DIRECTOR OF HIGHWAYS, CHIEF ENGINEER

PRINTED BY THE AUTHORITY
OF THE STATE OF ILLINOIS