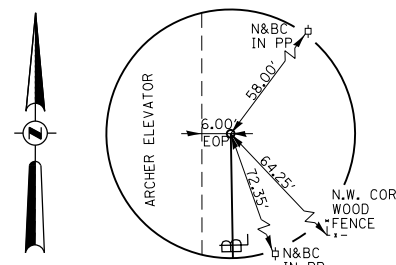
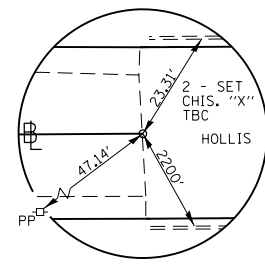


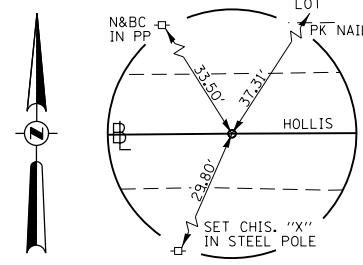
POT STA 10+00.00
ARCHER ELEVATOR ROAD
SET PK NAIL IN CHIS. "X"
N 1,125,404.58
E 2,418,125.64



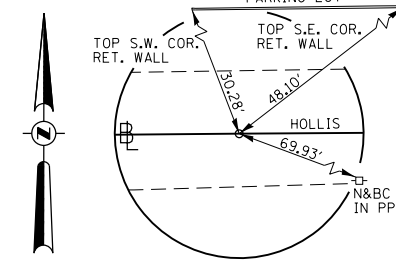
POT STA 24+26.28
ARCHER ELEVATOR ROAD
SET #4 REBAR
N 1,126,830.67
E 2,418,101.77



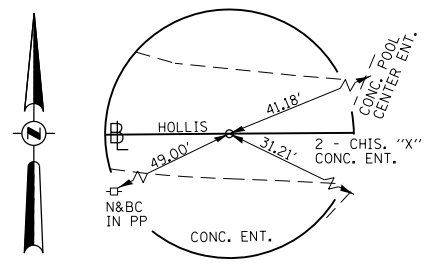
POT STA 0+00.00
HOLLIS DRIVE
SET PK NAIL IN CHIS. "X"
N 1,125,473.60
E 2,422,664.50



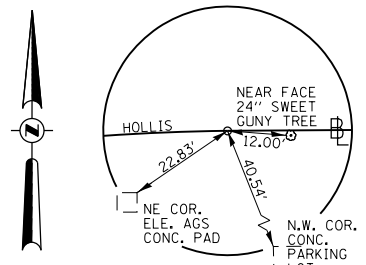
POT STA 1+91.66
HOLLIS DRIVE
SET PK NAIL IN CHIS. "X"
N 1,125,472.60
E 2,422,472.84



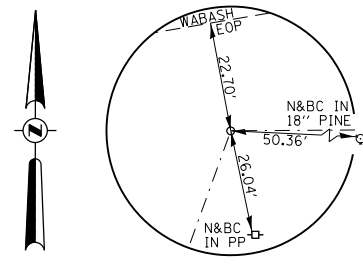
POT STA 7+74.38
HOLLIS DRIVE
SET PK NAIL IN CHIS. "X"
N 1,125,467.88
E 2,421,890.14



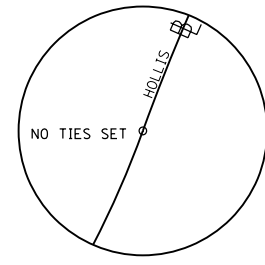
POT STA 10+09.00
HOLLIS DRIVE
SET PK NAIL IN CHIS. "X"
N 1,125,465.99
E 2,421,655.53



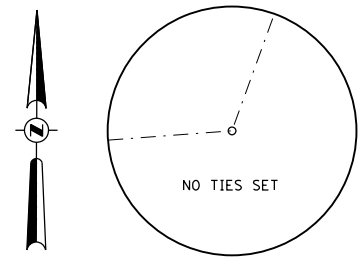
PC STA 11+96.62
HOLLIS DRIVE
SET #4 REBAR FLUSH
N 1,125,464.47
E 2,421,467.92



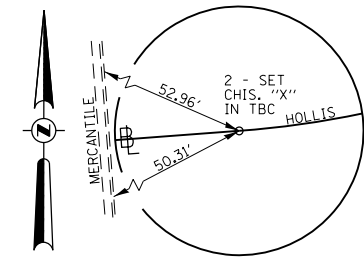
PI STA 14+82.56
HOLLIS DRIVE
SET #4 REBAR FLUSH
N 1,125,462.16
E 2,421,181.99



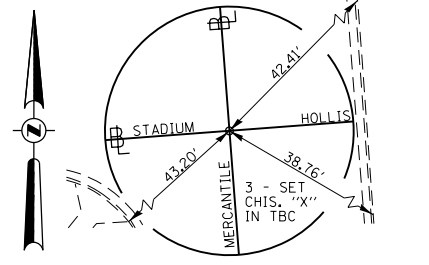
PRC STA 16+96.27
HOLLIS DRIVE
N 1,125,193.26
E 2,421,084.74



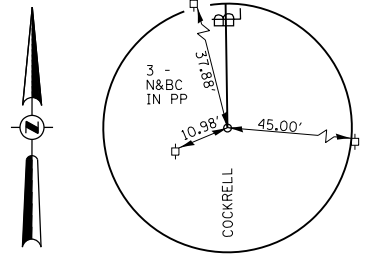
PI STA 18+25.67
HOLLIS DRIVE
N 1,125,071.57
E 2,421,040.73



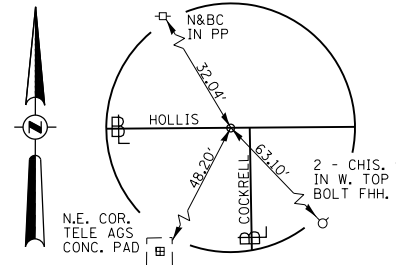
PT STA 19+25.97
HOLLIS DRIVE
N 1,125,061.85
E 2,420,911.70



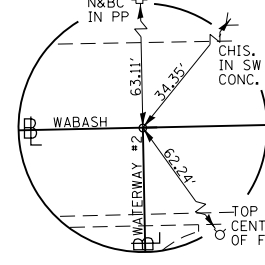
POT STA 20+03.40
HOLLIS DRIVE
SET PK NAIL IN CHIS. "X"
N 1,125,056.02
E 2,420,834.49



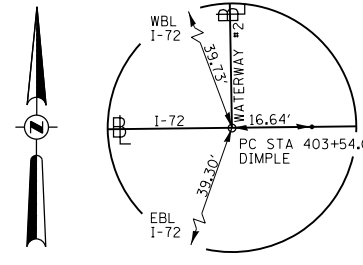
POT STA 8+95.07
COCKRELL LANE
SET #4 REBAR FLUSH
N 1,124,365.04
E 2,422,147.59



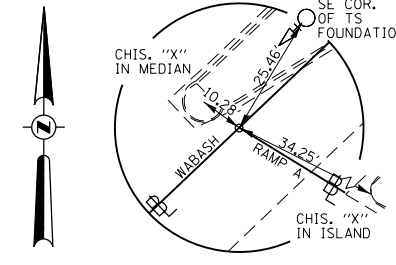
STA 20+00.48, 14.42' LT,
COCKRELL LANE
SET PK NAIL IN CHIS. "X"
N 1,125,469.82
E 2,422,129.42



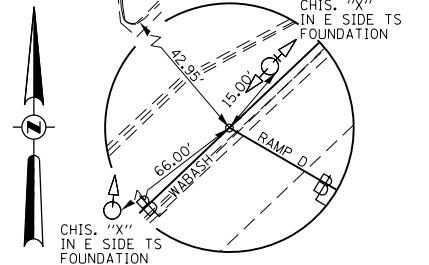
POT STA 20+00.00
WATERWAY #2
SET PK NAIL
N 1,125,375.88
E 2,416,787.96



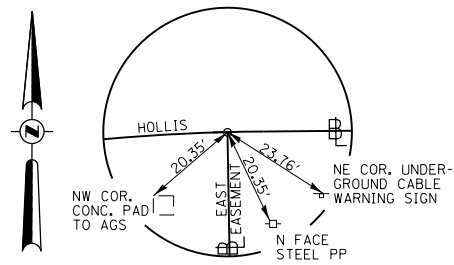
POT STA 35+43.54
WATERWAY #2
SET #4 REBAR W/ CAP
N 1,123,832.89
E 2,416,816.32



POT STA 19+87.16
RAMP A
SET PK NAIL
N 1,124,320.55
E 2,414,074.63



POT STA 16+68.08
RAMP D
SET STARDRILL IN CONC. MEDIAN
N 1,123,226.35
E 2,412,920.80



POT STA 70+00.00
KERASOTES EAST EASEMENT
SET #4 REBAR W/ CAP
N 1,125,464.34
E 2,421,460.38

FILE NAME =	USER NAME = sparksq	DESIGNED -	REVISED - CMT 1/22/2014	STATE OF ILLINOIS DEPARTMENT OF TRANSPORTATION	WABASH AVENUE WABASH AVENUE & SIDE ROAD TIE POINTS	F.A.U. RTE.	SECTION	COUNTY	TOTAL SHEETS	SHEET NO.	
Default	Plot Scale = 40.00' / in.	CHECKED -	REVISED -			8012	21(W-3, TS-1, RS-7)	SANGAMON	679	92	
	PLOT DATE = Feb-04-2014 01:29:50PM	DATE - 12/04/2013	REVISED -			CONTRACT NO. 72890					
						ILLINOIS FED. AID PROJECT					