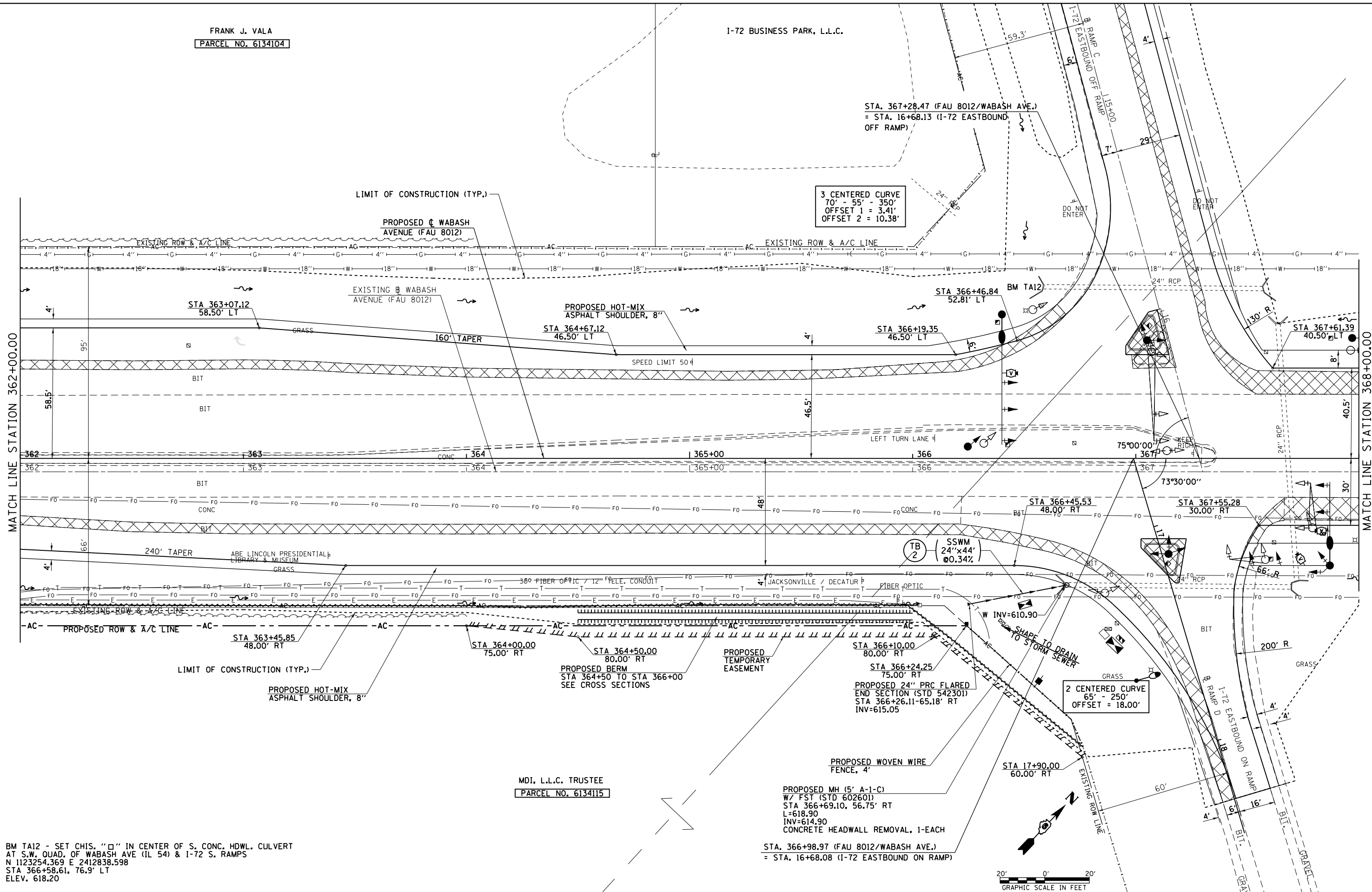


FRANK J. VALA
 PARCEL NO. 6134104

I-72 BUSINESS PARK, L.L.C.

STA. 367+28.47 (FAU 8012/WABASH AVE.)
 = STA. 16+68.13 (I-72 EASTBOUND
 OFF RAMP)

3 CENTERED CURVE
 70' - 55' - 350'
 OFFSET 1 = 3.41'
 OFFSET 2 = 10.38'



BM TA12 - SET CHIS. "□" IN CENTER OF S. CONC. HDWL. CULVERT
 AT S.W. QUAD. OF WABASH AVE (IL 54) & I-72 S. RAMPS
 N 1123254.369 E 2412838.598
 STA 366+58.61, 76.9' LT
 ELEV. 618.20

MDI, L.L.C. TRUSTEE
 PARCEL NO. 6134115

PROPOSED MH (5' A-1-C)
 W/ FST (STD 602601)
 STA 366+69.10, 56.75' RT
 L=618.90
 INV=614.90
 CONCRETE HEADWALL REMOVAL, 1-EACH
 STA. 366+98.97 (FAU 8012/WABASH AVE.)
 = STA. 16+68.08 (I-72 EASTBOUND ON RAMP)



FILE NAME =	USER NAME = sparksgw	DESIGNED - AWM	REVISED -
et:\pw\work\p1dot\sparksgw\10373645\0672890-sht-plan-Wabash07.dgn		DRAWN - JCW	REVISED -
	PLOT SCALE = 40.00' / in.	CHECKED - AWM	REVISED -
	PLOT DATE = Feb-04-2014 01:31:36PM	DATE - 12/04/2013	REVISED -

STATE OF ILLINOIS
 DEPARTMENT OF TRANSPORTATION

WABASH AVENUE
 PLAN VIEW

SCALE: 1=20 SHEET NO. OF SHEETS STA. 362+00.00 TO STA. 368+00.00

F.A.U. RTE.	SECTION	COUNTY	TOTAL SHEETS	SHEET NO.
8012	21(W-3, TS-1, RS-7)	SANGAMON	679	117
CONTRACT NO. 72890			ILLINOIS FED. AID PROJECT	