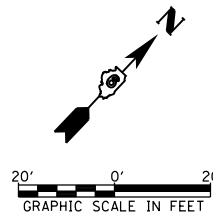


STELLE DEVELOPMENT, L.L.C.
 PARCEL NO. 6134107

NEW CINGULAR WIRELESS, P.C.S.
 PARCEL NO. 6134105

SAMUEL D. NICHOLS
 & CONNIE J. STELLE,
 TRUSTEE
 PARCEL NO. 6134106

BM TA9 - FOUND CHIS. "□" IN N. EDGE OF FUTURE SIGNAL FOUNDATION
 AT S.W. QUAD. OF WABASH AVE. & ASH GROVE RD.
 N 1124921.268 E 2414652.038
 STA 391+21.46, 38.6' LT
 ELEV. 616.62

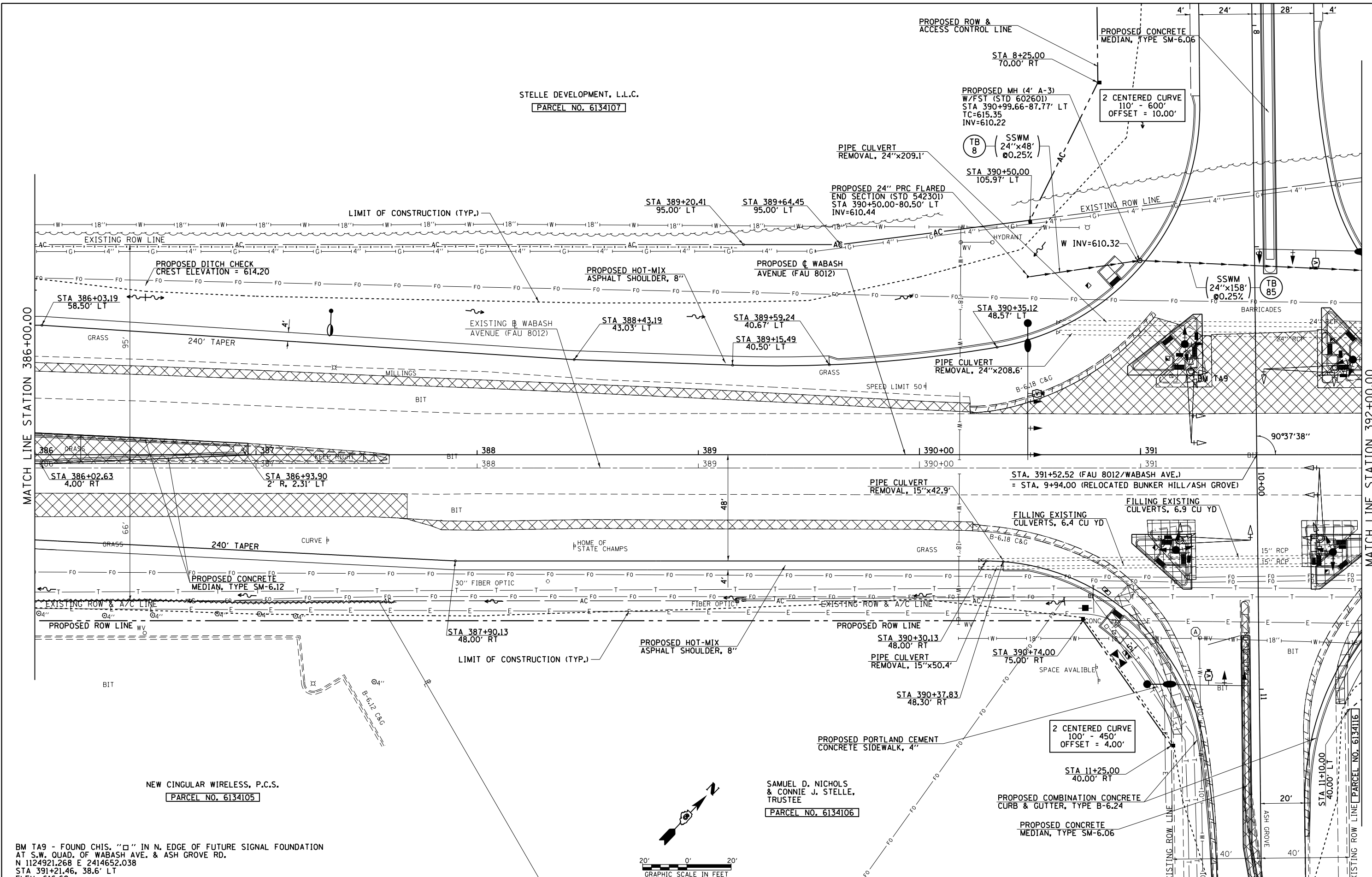


STATE OF ILLINOIS
 DEPARTMENT OF TRANSPORTATION

WABASH AVENUE
 PLAN VIEW

SCALE: 1=20 SHEET NO. OF SHEETS STA. 386+00.00 TO STA. 392+00.00

F.A.U. RTE.	SECTION	COUNTY	TOTAL SHEETS	SHEET NO.
8012	21(W-3, TS-1, RS-7)	SANGAMON	679	125
				CONTRACT NO. 72890
ILLINOIS FED. AID PROJECT				



MATCH LINE STATION 386+00.00

MATCH LINE STATION 392+00.00