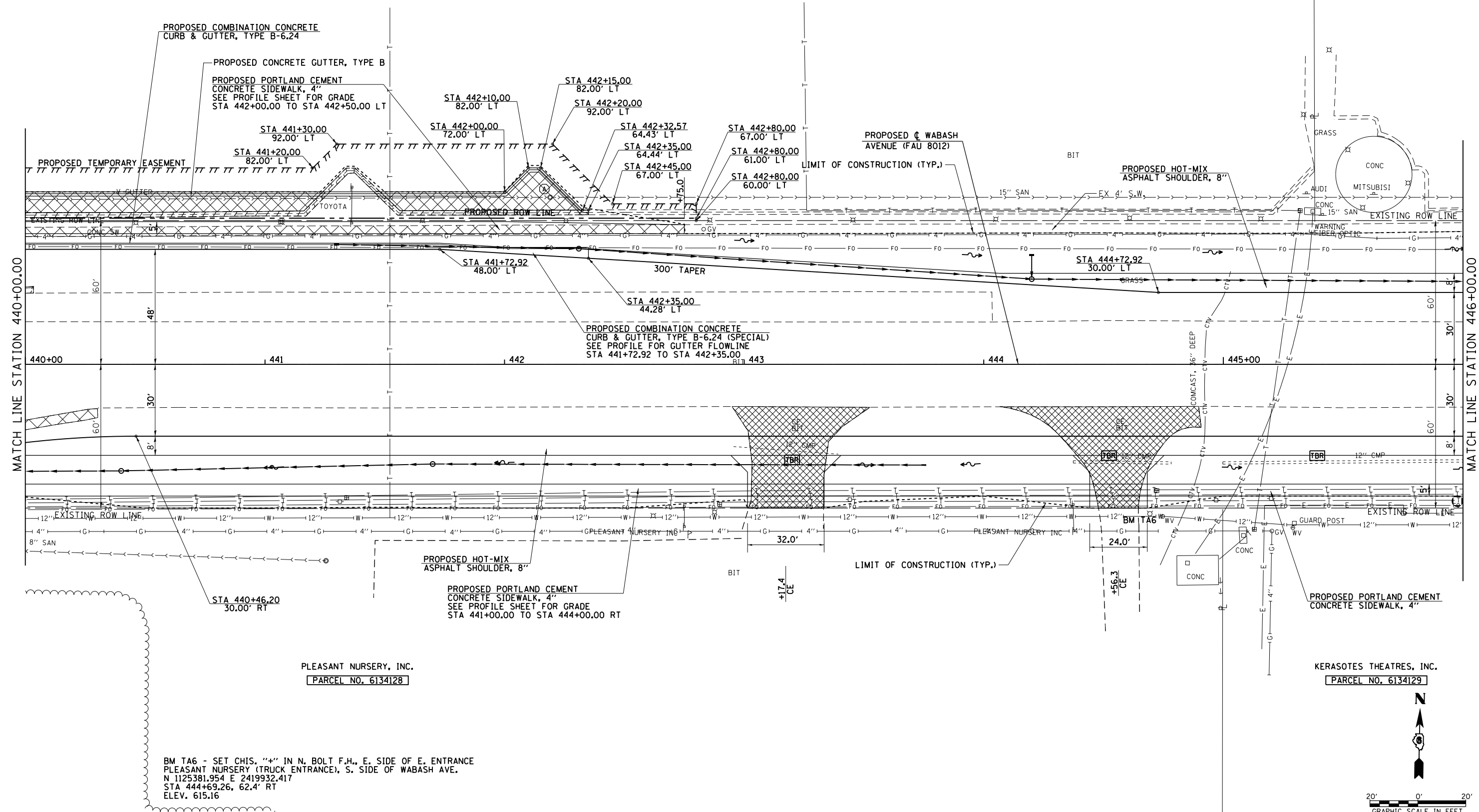
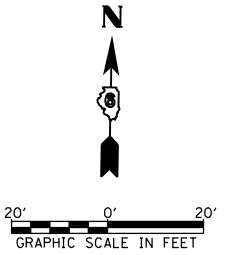


GREEN ENTERPRISES, L.P.
 PARCEL NO. 6134125

GREEN DKSM, L.L.C.
 PARCEL NO. 6134126



BM TA6 - SET CHIS. "+" IN N. BOLT F.H., E. SIDE OF E. ENTRANCE PLEASANT NURSERY (TRUCK ENTRANCE), S. SIDE OF WABASH AVE. N 1125381.954 E 2419932.417 STA 444+69.26, 62.4' RT ELEV. 615.16



FILE NAME =	USER NAME = sparksqw	DESIGNED - AWM	REVISED -	STATE OF ILLINOIS DEPARTMENT OF TRANSPORTATION	WABASH AVENUE PLAN VIEW			F.A.U R.T.E.	SECTION	COUNTY	TOTAL SHEETS	SHEET NO.	
et:\pw\work\p\dtdot\sparksqw\10373645\0672890-sht-plan-Wabash20.dgn		DRAWN - JCW	REVISED -		SCALE: 1:20	SHEET NO.	OF	SHEETS	8012	21(W-3, TS-1, RS-7)	SANGAMON	679	153
		CHECKED - AWM	REVISED -										
		DATE - 12/04/2013	REVISED -										
				STA. 440+00.00 TO STA. 446+00.00			CONTRACT NO. 72890						
							ILLINOIS FED. AID PROJECT						