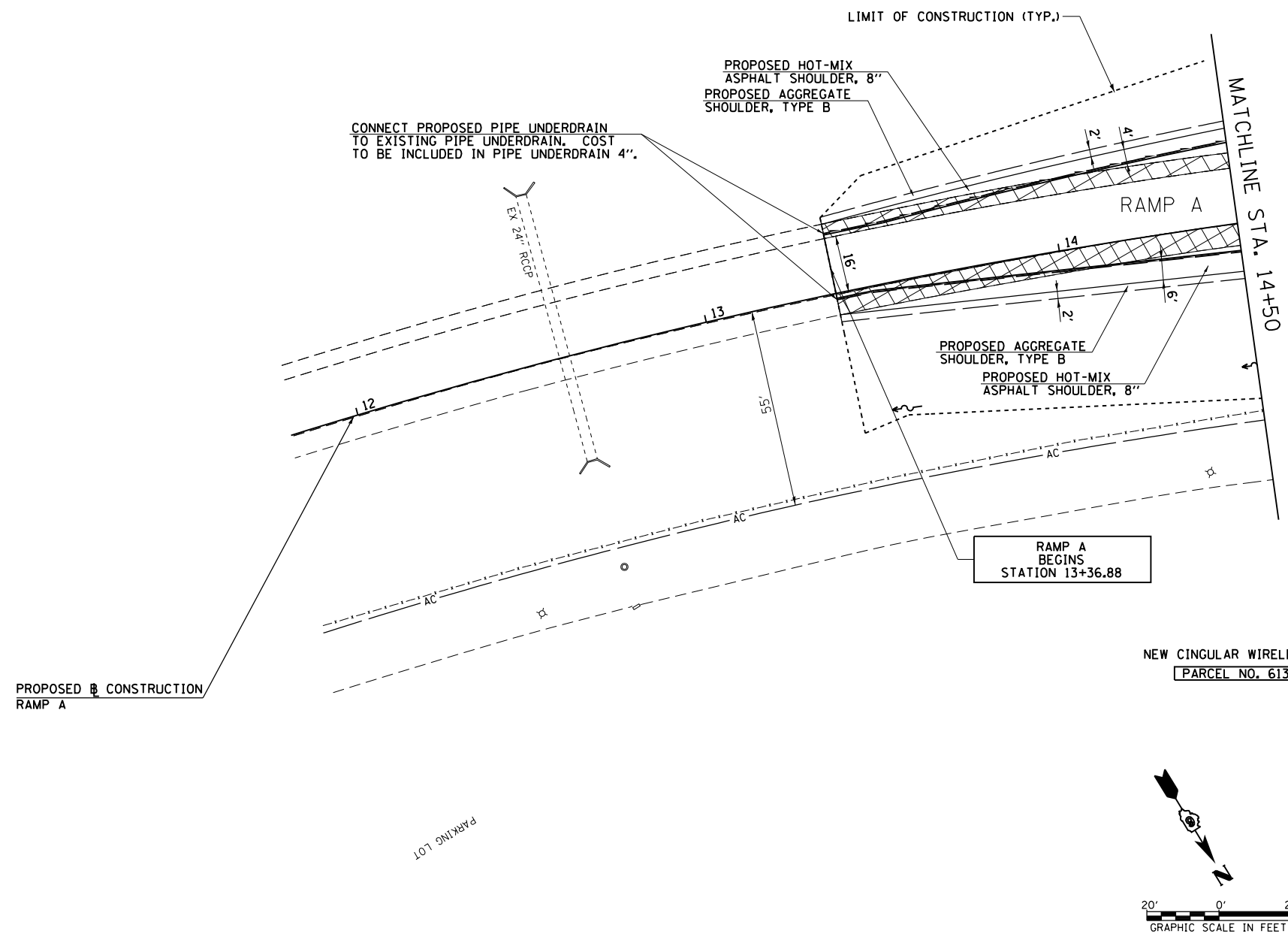
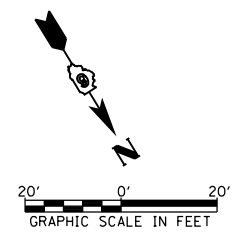


PROP. CURVE PRO01-1
 PI STA. = 12+68.18
 $\Delta = 29^\circ 09' 45''$ (RT)
 $D = 3^\circ 29' 51''$
 $R = 1,638.20'$
 $T = 426.14'$
 $L = 833.81'$
 $E = 54.52'$
 P.C. STA = 8+42.04
 P.T. STA = 16+75.85



NEW CINGULAR WIRELESS, P.C.S.
 PARCEL NO. 6134105



FILE NAME =	USER NAME = sparksgw	DESIGNED - SEW	REVISED -
et:\pw\work\p\id\sparksgw\0373645\0678890-sht-plan-RampA.dgn		DRAWN - AS	REVISED -
PLOT SCALE = 40.0000' / in.		CHECKED - SEW	REVISED -
PLOT DATE = Feb-04-2014 01:36:32PM		DATE - 12/04/2013	REVISED -

**STATE OF ILLINOIS
 DEPARTMENT OF TRANSPORTATION**

**RAMP A
 PLAN SHEET**
 SCALE: 1"=20' SHEET NO. 1 OF 2 SHEETS STA. 13+36.88 TO STA. 14+50.00

F.A.U. RTE.	SECTION	COUNTY	TOTAL SHEETS	SHEET NO.
8012	21(W-3,TS-1,RS-7)	SANGAMON	679	185
				CONTRACT NO. 72890
ILLINOIS FED. AID PROJECT				