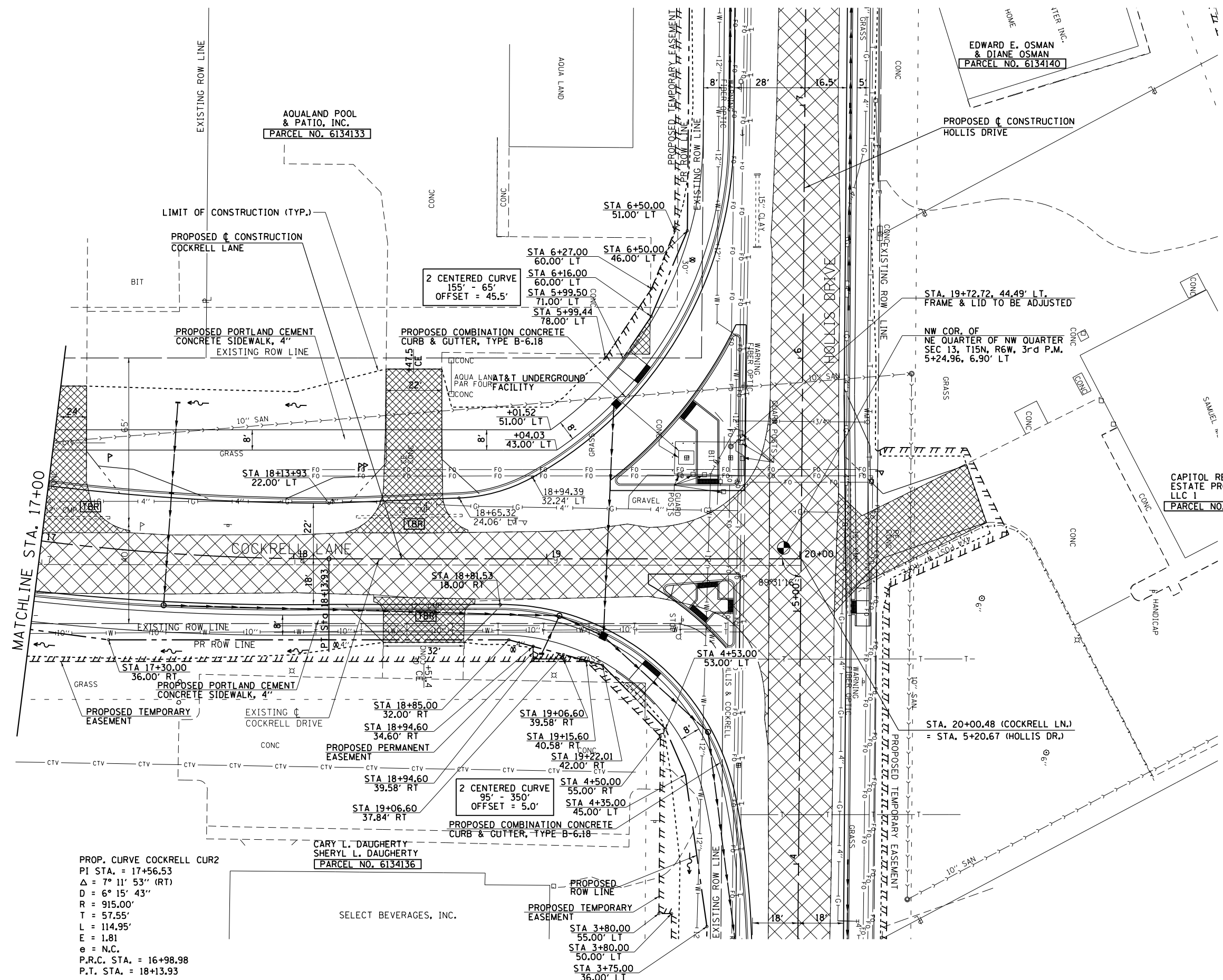
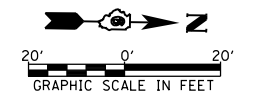


NOTE: THE LOCATION OF THE AT&T UNDERGROUND FACILITY SHALL BE LOCATED BY THE CONTRACTOR AND PROTECTED AS DIRECTED BY THE ENGINEER.



PROP. CURVE COCKRELL CUR2
 PI STA. = 17+56.53
 $\Delta = 7^\circ 11' 53''$ (RT)
 $D = 6^\circ 15' 43''$
 $R = 915.00'$
 $T = 57.55'$
 $L = 114.95'$
 $E = 1.81$
 $e = N.C.$
 P.R.C. STA. = 16+98.98
 P.T. STA. = 18+13.93



| | | | |
|---|-----------------------|-------------------|-------------------------|
| FILE NAME = | USER NAME = edwardsjd | DESIGNED - SEW | REVISED - CMT 1/22/2014 |
| et:\pw\work\p\midot\edwardsjd\0379489\0672890-sht-plan-Cockrell12.dgn | | DRAWN - AS | REVISED - |
| PLOT SCALE = 40.0000' / in. | | CHECKED - SEW | REVISED - |
| PLOT DATE = Feb-21-2014 02:22:32PM | | DATE - 12/04/2013 | REVISED - |

STATE OF ILLINOIS
 DEPARTMENT OF TRANSPORTATION

COCKRELL LANE
 PLAN SHEET

SCALE: 1"=20' SHEET NO. 2 OF 2 SHEETS STA. 17+00.00 TO STA. 20+00.00

| | | | | |
|---------------------------|-------------------|----------|--------------|-----------|
| F.A.U. RTE. | SECTION | COUNTY | TOTAL SHEETS | SHEET NO. |
| 8012 | 21(W-3,TS-1,RS-7) | SANGAMON | 679 | 240 |
| CONTRACT NO. 72890 | | | | |
| ILLINOIS FED. AID PROJECT | | | | |