

PT	ELEV.	WAB. STA.	WAB. OFF.	MERC. STA.	MERC. OFF.
MERC10	609.22	451+32.10	-30.00	10+26.94	-209.45
MERC11	609.18	451+47.73	-30.27	10+27.27	-193.82
MERC12	609.12	451+63.34	-31.09	10+28.14	-178.21
MERC13	609.05	451+78.92	-32.44	10+29.55	-162.64
MERC14	608.98	451+94.44	-34.34	10+31.50	-147.13
MERC15	608.85	452+09.89	-36.77	10+33.99	-131.70
MERC16	608.64	452+25.40	-39.70	10+37.01	-116.36
MERC17	608.45	452+40.83	-43.10	10+40.57	-101.14
MERC18	608.28	452+56.43	-47.98	10+45.66	-85.79
MERC19	608.10	452+71.19	-55.00	10+52.94	-71.36
MERC20	607.93	452+84.82	-64.03	10+62.26	-58.15
MERC21	607.78	452+97.02	-74.90	10+73.42	-46.44
MERC22	607.65	453+07.53	-87.36	10+86.17	-36.50
MERC23	607.56	453+16.14	-101.19	11+00.25	-28.54
MERC24	607.48	453+22.62	-116.08	11+15.33	-22.73
MERC25	607.40	453+26.83	-131.72	11+31.11	-19.19
MERC26	607.30	453+28.65	-147.80	11+47.24	-18.00
MERC27	607.22	453+29.20	-162.79	11+62.24	-18.00

PT	ELEV.	WAB. STA.	WAB. OFF.	MERC. STA.	MERC. OFF.
MERC30	N/A	453+02.36	-40.12	10+38.80	-40.23
MERC31	608.47	452+98.34	-40.11	10+38.69	-44.21
MERC32	608.56	452+98.34	-36.11	10+34.69	-44.09
MERC33	N/A	453+17.13	-51.88	10+50.99	-26.00
MERC34	608.13	453+17.23	-55.17	10+54.29	-26.00
MERC35	608.15	453+21.29	-55.04	10+54.29	-22.00
MERC36	N/A	453+15.77	-41.13	10+40.21	-27.00
MERC37	608.57	453+20.66	-36.11	10+35.35	-22.00

STA	2.0%	1.5%	1.5%	2.0%	2.5%
A STA 450+59.64	2.0%	1.5%	1.5%	2.0%	2.5%
B STA 450+80.64	2.0%	1.5%	1.5%	1.5%	2.5%
C STA 451+43.64	2.0%	1.5%	0.0%	0.0%	2.5%
D STA 452+06.64	2.0%	1.5%	1.5%	1.5%	2.5%
E STA 452+27.64	2.0%	2.0%	2.0%	2.0%	2.5%
F STA 452+40.24	2.3%	2.3%	2.3%	2.3%	2.5%

PT	ELEV.	WAB. STA.	WAB. OFF.	MERC. STA.	MERC. OFF.
MERC40	606.82	453+69.62	-222.03	12+22.98	17.96
MERC41	606.91	453+69.27	-206.32	12+07.27	18.35
MERC42	606.98	453+69.50	-190.61	11+91.59	19.28
MERC43	607.06	453+70.30	-174.91	11+75.94	20.76
MERC44	607.12	453+71.67	-159.25	11+60.36	22.79
MERC45	607.20	453+73.59	-143.65	11+44.86	25.36
MERC46	607.29	453+76.06	-128.12	11+29.45	28.47
MERC47	607.39	453+79.07	-112.67	11+14.17	32.12
MERC48	607.50	453+83.91	-97.55	10+99.29	37.56
MERC49	607.65	453+91.67	-83.63	10+85.78	45.83
MERC50	607.86	454+02.02	-71.46	10+74.16	56.60
MERC51	608.09	454+14.55	-61.49	10+64.89	69.45
MERC52	608.31	454+28.78	-54.09	10+58.33	83.88
MERC53	608.48	454+44.17	-49.54	10+54.75	99.31
MERC54	608.57	454+60.14	-48.00	10+54.28	115.15

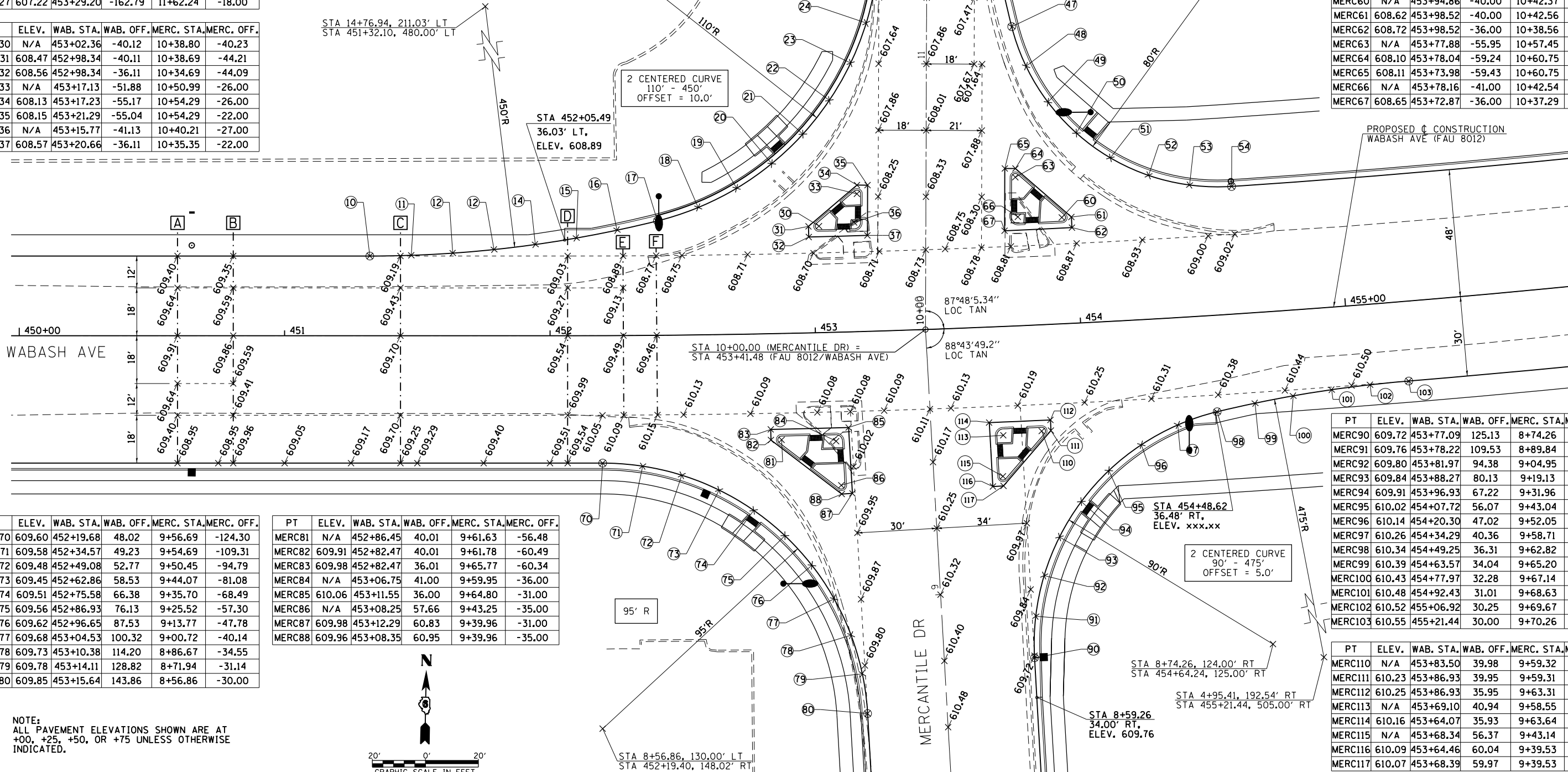
PT	ELEV.	WAB. STA.	WAB. OFF.	MERC. STA.	MERC. OFF.
MERC60	N/A	453+94.86	-40.00	10+42.37	51.23
MERC61	608.62	453+98.52	-40.00	10+42.56	54.84
MERC62	608.72	453+98.52	-36.00	10+38.56	55.05
MERC63	N/A	453+77.88	-55.95	10+57.45	33.68
MERC64	608.10	453+78.04	-59.24	10+60.75	33.68
MERC65	608.11	453+73.98	-59.43	10+60.75	29.68
MERC66	N/A	453+78.16	-41.00	10+42.54	34.68
MERC67	608.65	453+72.87	-36.00	10+37.29	29.68

PT	ELEV.	WAB. STA.	WAB. OFF.	MERC. STA.	MERC. OFF.
MERC70	609.60	452+19.68	48.02	9+56.69	-124.30
MERC71	609.58	452+34.57	49.23	9+54.69	-109.31
MERC72	609.48	452+49.08	52.77	9+50.45	-94.79
MERC73	609.45	452+62.86	58.53	9+44.07	-81.08
MERC74	609.51	452+75.58	66.38	9+35.70	-68.49
MERC75	609.56	452+86.93	76.13	9+25.52	-57.30
MERC76	609.62	452+96.65	87.53	9+13.77	-47.78
MERC77	609.68	453+04.53	100.32	9+00.72	-40.14
MERC78	609.73	453+10.38	114.20	8+86.67	-34.55
MERC79	609.78	453+14.11	128.82	8+71.94	-31.14
MERC80	609.85	453+15.64	143.86	8+56.86	-30.00

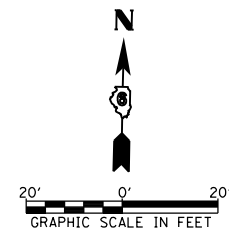
PT	ELEV.	WAB. STA.	WAB. OFF.	MERC. STA.	MERC. OFF.
MERC81	N/A	452+86.45	40.01	9+61.63	-56.48
MERC82	609.91	452+82.47	40.01	9+61.78	-60.49
MERC83	609.98	452+82.47	36.01	9+65.77	-60.34
MERC84	N/A	453+06.75	41.00	9+59.95	-36.00
MERC85	610.06	453+11.55	36.00	9+64.80	-31.00
MERC86	N/A	453+08.25	57.66	9+43.25	-35.00
MERC87	609.98	453+12.29	60.83	9+39.96	-31.00
MERC88	609.96	453+08.35	60.95	9+39.96	-35.00

PT	ELEV.	WAB. STA.	WAB. OFF.	MERC. STA.	MERC. OFF.
MERC90	609.72	453+77.09	125.13	8+74.26	34.00
MERC91	609.76	453+78.22	109.53	8+89.84	35.36
MERC92	609.80	453+81.97	94.38	9+04.95	39.39
MERC93	609.84	453+88.27	80.13	9+19.13	45.98
MERC94	609.91	453+96.93	67.22	9+31.96	54.93
MERC95	610.02	454+07.72	56.07	9+43.04	65.96
MERC96	610.14	454+20.30	47.02	9+52.05	78.74
MERC97	610.26	454+34.29	40.36	9+58.71	92.89
MERC98	610.34	454+49.25	36.31	9+62.82	107.98
MERC99	610.39	454+63.57	34.04	9+65.20	122.41
MERC100	610.43	454+77.97	32.28	9+67.14	136.92
MERC101	610.48	454+92.43	31.01	9+68.63	151.47
MERC102	610.52	455+06.92	30.25	9+69.67	166.07
MERC103	610.55	455+21.44	30.00	9+70.26	180.69

PT	ELEV.	WAB. STA.	WAB. OFF.	MERC. STA.	MERC. OFF.
MERC110	N/A	453+83.50	39.98	9+59.32	41.56
MERC111	610.23	453+86.93	39.95	9+59.31	45.03
MERC112	610.25	453+86.93	35.95	9+63.31	45.07
MERC113	N/A	453+69.10	40.94	9+58.55	27.00
MERC114	610.16	453+64.07	35.93	9+63.64	22.00
MERC115	N/A	453+68.34	56.37	9+43.14	26.00
MERC116	610.09	453+64.46	60.04	9+39.53	22.00
MERC117	610.07	453+68.39	59.97	9+39.53	26.00



NOTE:
ALL PAVEMENT ELEVATIONS SHOWN ARE AT
+00, +25, +50, OR +75 UNLESS OTHERWISE
INDICATED.



FILE NAME =	USER NAME = sparksgw	DESIGNED - AWM	REVISED -
ci:\pw\work\p\idat\sparksgw\100373645\0678890-sht-intersec-Mercantile.dgn		DRAWN - TJD	REVISED -
		CHECKED - AWM	REVISED -
		DATE - 12/04/2013	REVISED -

**STATE OF ILLINOIS
DEPARTMENT OF TRANSPORTATION**

**MERCANTILE DRIVE
INTERSECTION DETAIL**

SCALE: 1"=20' 1 SHEET NO. OF SHEETS STA. TO STA.

F.A.U. R.E.	SECTION	COUNTY	TOTAL SHEETS	SHEET NO.
8012	21(W-3, TS-1, RS-7)	SANGAMON	679	306
CONTRACT NO. 72890			ILLINOIS FED. AID PROJECT	