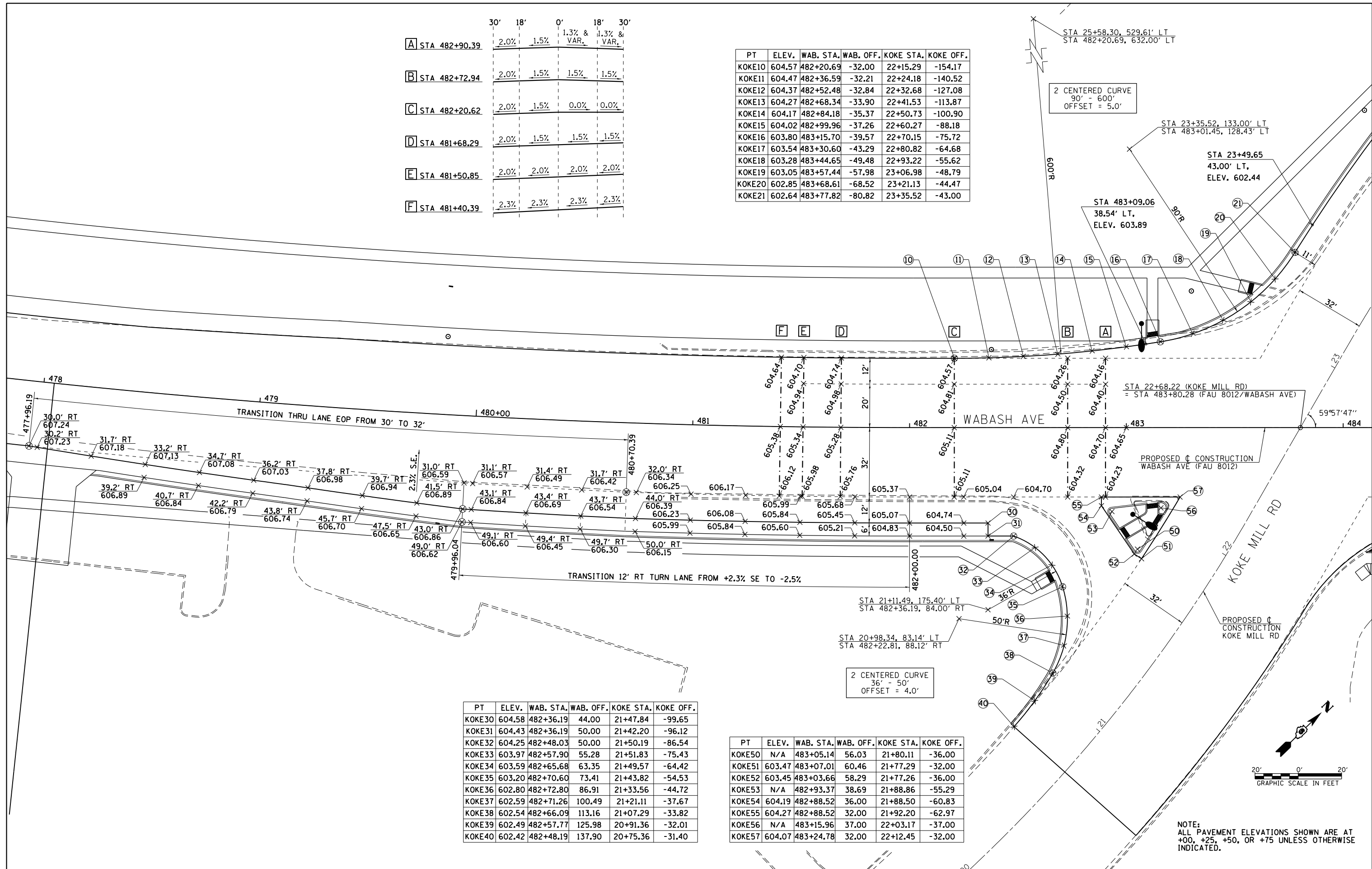


	30'	18'	0'	18'	30'
A STA 482+90.39	2.0%	1.5%	1.3% & VAR.	1.3% & VAR.	
B STA 482+72.94	2.0%	1.5%	1.5%	1.5%	
C STA 482+20.62	2.0%	1.5%	0.0%	0.0%	
D STA 481+68.29	2.0%	1.5%	1.5%	1.5%	
E STA 481+50.85	2.0%	2.0%	2.0%	2.0%	
F STA 481+40.39	2.3%	2.3%	2.3%	2.3%	

PT	ELEV.	WAB. STA.	WAB. OFF.	KOKE STA.	KOKE OFF.
KOKE10	604.57	482+20.69	-32.00	22+15.29	-154.17
KOKE11	604.47	482+36.59	-32.21	22+24.18	-140.52
KOKE12	604.37	482+52.48	-32.84	22+32.68	-127.08
KOKE13	604.27	482+68.34	-33.90	22+41.53	-113.87
KOKE14	604.17	482+84.18	-35.37	22+50.73	-100.90
KOKE15	604.02	482+99.96	-37.26	22+60.27	-88.18
KOKE16	603.80	483+15.70	-39.57	22+70.15	-75.72
KOKE17	603.54	483+30.60	-43.29	22+80.82	-64.68
KOKE18	603.28	483+44.65	-49.48	22+93.22	-55.62
KOKE19	603.05	483+57.44	-57.98	23+06.98	-48.79
KOKE20	602.85	483+68.61	-68.52	23+21.13	-44.47
KOKE21	602.64	483+77.82	-80.82	23+35.52	-43.00

PT	ELEV.	WAB. STA.	WAB. OFF.	KOKE STA.	KOKE OFF.
KOKE30	604.58	482+36.19	44.00	21+47.84	-99.65
KOKE31	604.43	482+36.19	50.00	21+42.20	-96.12
KOKE32	604.25	482+48.03	50.00	21+50.19	-86.54
KOKE33	603.97	482+57.90	55.28	21+51.83	-75.43
KOKE34	603.59	482+65.68	63.35	21+49.57	-64.42
KOKE35	603.20	482+70.60	73.41	21+43.82	-54.53
KOKE36	602.80	482+72.80	86.91	21+33.56	-44.72
KOKE37	602.59	482+71.26	100.49	21+21.11	-37.67
KOKE38	602.54	482+66.09	113.16	21+07.29	-33.82
KOKE39	602.49	482+57.77	125.98	20+91.36	-32.01
KOKE40	602.42	482+48.19	137.90	20+75.36	-31.40

PT	ELEV.	WAB. STA.	WAB. OFF.	KOKE STA.	KOKE OFF.
KOKE50	N/A	483+05.14	56.03	21+80.11	-36.00
KOKE51	603.47	483+07.01	60.46	21+77.29	-32.00
KOKE52	603.45	483+03.66	58.29	21+77.26	-36.00
KOKE53	N/A	482+93.37	38.69	21+88.86	-55.29
KOKE54	604.19	482+88.52	36.00	21+88.50	-60.83
KOKE55	604.27	482+88.52	32.00	21+92.20	-62.97
KOKE56	N/A	483+15.96	37.00	22+03.17	-37.00
KOKE57	604.07	483+24.78	32.00	22+12.45	-32.00



NOTE:
ALL PAVEMENT ELEVATIONS SHOWN ARE AT
+00, +25, +50, OR +75 UNLESS OTHERWISE
INDICATED.

FILE NAME =	USER NAME = sparksgw	DESIGNED - AWM	REVISED -
es:\pwork\midot\sparksgw\10373645\0678890-sht-intersec-KokeMill.dgn		DRAWN - TJD	REVISED -
		CHECKED - AWM	REVISED -
		DATE - 12/04/2013	REVISED -

**STATE OF ILLINOIS
DEPARTMENT OF TRANSPORTATION**

**KOKE MILL ROAD
INTERSECTION DETAIL**

SCALE: 1"=20' SHEET NO. OF SHEETS STA. TO STA.

F.A.U. RTE.	SECTION	COUNTY	TOTAL SHEETS	SHEET NO.
8012	21(W-3, TS-1, RS-7)	SANGAMON	679	309
CONTRACT NO. 72890				
ILLINOIS FED. AID PROJECT				