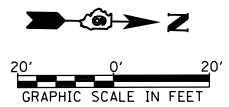
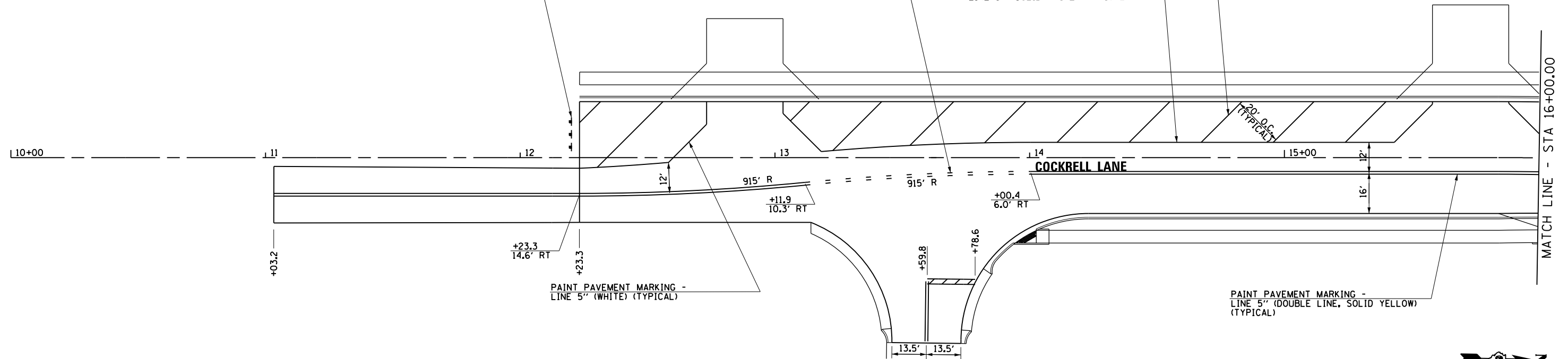


NOTE: ROAD CLOSED WARNING SIGNS AND RED DIAMONDS SHALL BE INSTALLED IN ACCORDANCE WITH THE SIGNING PLANS OR AS DIRECTED BY THE ENGINEER.

PAINT PAVEMENT MARKING - LINE 5" (DOUBLE LINE, DASHED YELLOW) (TYPICAL)

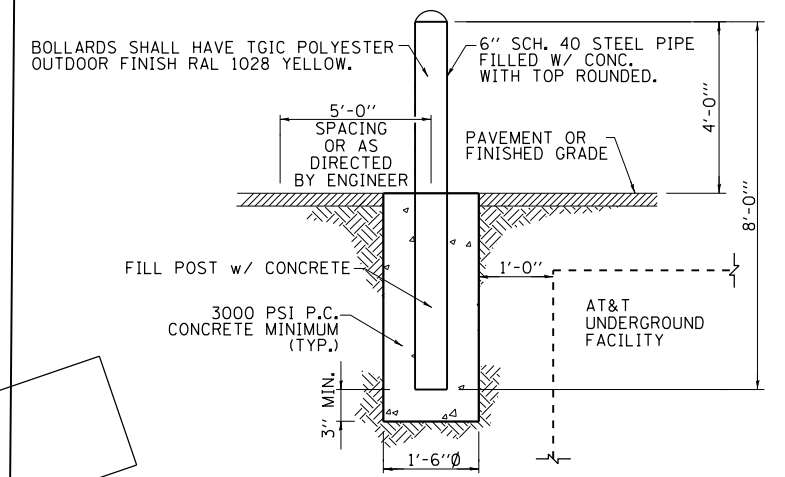
PAINT PAVEMENT MARKING - LINE 12" (SOLID WHITE) (TYPICAL)

PAINT PAVEMENT MARKING - LINE 5" (SOLID WHITE) (TYPICAL)



PAINT PAVEMENT MARKING - LINE 5" (SOLID WHITE) (TYPICAL)
 PAINT PAVEMENT MARKING - LINE 5" (DOUBLE LINE, SOLID YELLOW) (TYPICAL)
 THERMOPLASTIC PAVEMENT MARKING - LINE 5" (DOUBLE LINE, SOLID YELLOW) (TYPICAL)

THERMOPLASTIC PAVEMENT MARKING - LINE 12" (SOLID WHITE) (TYPICAL) SEE DISTRICT 6 STANDARD FOR SPACING
 THERMOPLASTIC PAVEMENT MARKING - LINE 8" (SOLID WHITE) (TYPICAL)

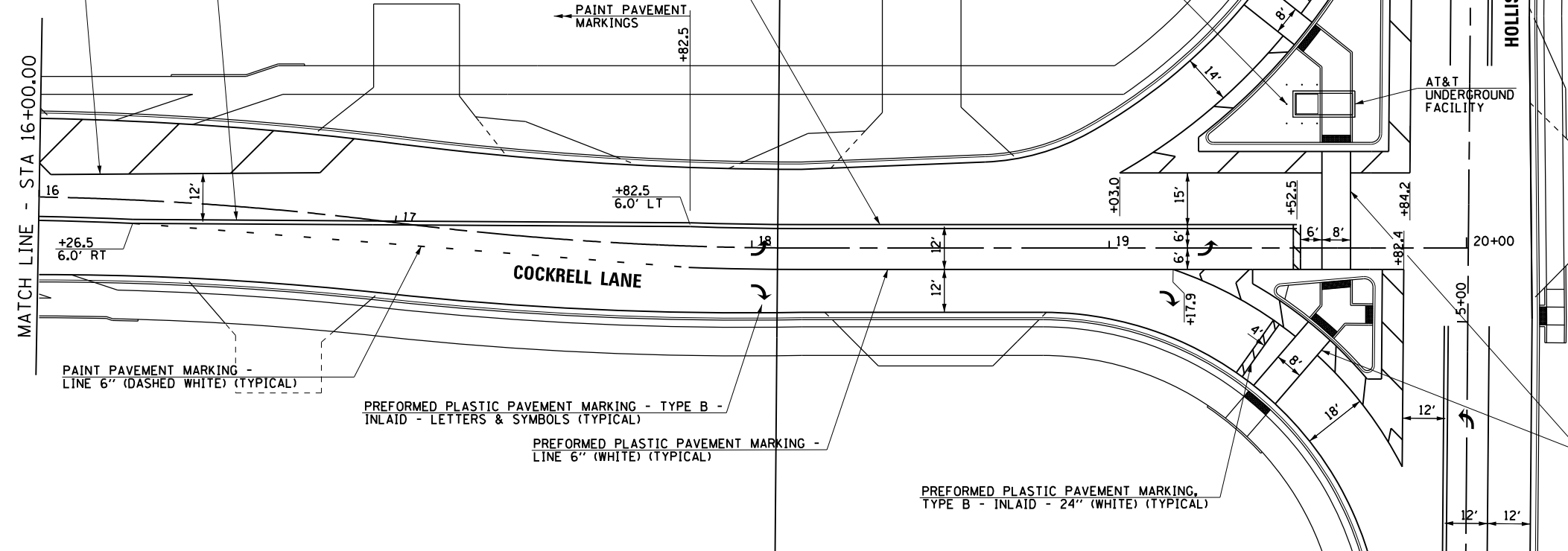
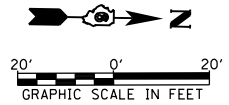


BOLLARD DETAIL

N.T.S.

THE LOCATION OF THE AT&T UNDERGROUND FACILITY SHALL BE VERIFIED BY THE CONTRACTOR PRIOR TO INSTALLATION OF BOLLARDS OR AS DIRECTED BY THE ENGINEER.

ALL LABOR, EQUIPMENT, AND MATERIALS NECESSARY TO COMPLETE THE INSTALLATION OF THE BOLLARDS WILL NOT BE MEASURED SEPARATELY FOR PAYMENT, BUT SHALL BE INCLUDED IN THE CONTRACT UNIT PRICE PER SQUARE FOOT FOR CONCRETE MEDIAN SURFACE, 4 INCH.



PREFORMED PLASTIC PAVEMENT MARKING - TYPE B - INLAID - LETTERS & SYMBOLS (TYPICAL)
 PREFORMED PLASTIC PAVEMENT MARKING - LINE 6" (WHITE) (TYPICAL)
 PREFORMED PLASTIC PAVEMENT MARKING, TYPE B - INLAID - 24" (WHITE) (TYPICAL)

NOTE: STOP SIGNS SHALL BE INSTALLED IN ACCORDANCE WITH THE SIGNING PLANS OR AS DIRECTED BY THE ENGINEER.

FILE NAME =	USER NAME = sparksgw	DESIGNED -	REVISED - CMT 1/22/2014
ei:\pw\work\p\midot\sparksgw\10379489\0672890-sht-pmk24-Cockrell.dgn		DRAWN -	REVISED -
Default		CHECKED -	REVISED -
	PLOT DATE = Feb-04-2014 01:44:21PM	DATE - 12/04/2013	REVISED -

**STATE OF ILLINOIS
 DEPARTMENT OF TRANSPORTATION**

**COCKRELL LANE
 PAVEMENT MARKING PLAN**

SCALE: SHEET OF SHEETS STA. TO STA.

F.A.U. RTE.	SECTION	COUNTY	TOTAL SHEETS	SHEET NO.
8012	21(W-3, T5-1, RS-7)	SANGAMON	679	333
CONTRACT NO. 72890				

ILLINOIS FED. AID PROJECT