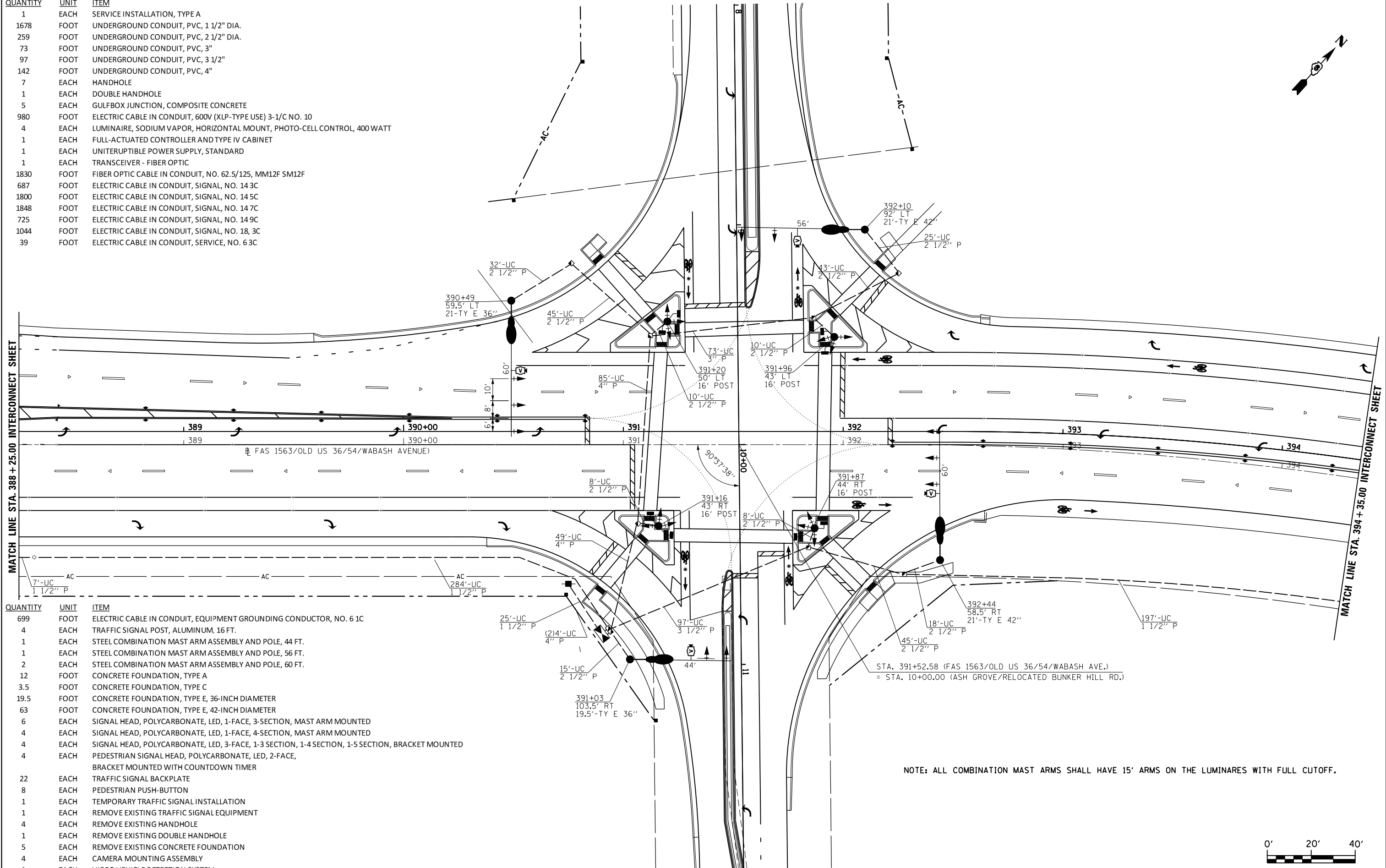
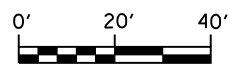


QUANTITY	UNIT	ITEM
1	EACH	SERVICE INSTALLATION, TYPE A
1678	FOOT	UNDERGROUND CONDUIT, PVC, 1 1/2" DIA.
259	FOOT	UNDERGROUND CONDUIT, PVC, 2 1/2" DIA.
73	FOOT	UNDERGROUND CONDUIT, PVC, 3"
97	FOOT	UNDERGROUND CONDUIT, PVC, 3 1/2"
142	FOOT	UNDERGROUND CONDUIT, PVC, 4"
7	EACH	HANDHOLE
1	EACH	DOUBLE HANDHOLE
5	EACH	GULFBOX JUNCTION, COMPOSITE CONCRETE
980	FOOT	ELECTRIC CABLE IN CONDUIT, 600V (XLP-TYPE USE) 3-1/C NO. 10
4	EACH	LUMINAIRE, SODIUM VAPOR, HORIZONTAL MOUNT, PHOTO-CELL CONTROL, 400 WATT
1	EACH	FULL-ACTUATED CONTROLLER AND TYPE IV CABINET
1	EACH	UNITERUPTIBLE POWER SUPPLY, STANDARD
1	EACH	TRANSCEIVER - FIBER OPTIC
1830	FOOT	FIBER OPTIC CABLE IN CONDUIT, NO. 62.5/125, MM12F SM12F
687	FOOT	ELECTRIC CABLE IN CONDUIT, SIGNAL, NO. 14 3C
1800	FOOT	ELECTRIC CABLE IN CONDUIT, SIGNAL, NO. 14 5C
1848	FOOT	ELECTRIC CABLE IN CONDUIT, SIGNAL, NO. 14 7C
725	FOOT	ELECTRIC CABLE IN CONDUIT, SIGNAL, NO. 14 9C
1044	FOOT	ELECTRIC CABLE IN CONDUIT, SIGNAL, NO. 18, 3C
39	FOOT	ELECTRIC CABLE IN CONDUIT, SERVICE, NO. 6 3C



QUANTITY	UNIT	ITEM
699	FOOT	ELECTRIC CABLE IN CONDUIT, EQUIPMENT GROUNDING CONDUCTOR, NO. 6 1C
4	EACH	TRAFFIC SIGNAL POST, ALUMINUM, 16 FT.
1	EACH	STEEL COMBINATION MAST ARM ASSEMBLY AND POLE, 44 FT.
1	EACH	STEEL COMBINATION MAST ARM ASSEMBLY AND POLE, 56 FT.
2	EACH	STEEL COMBINATION MAST ARM ASSEMBLY AND POLE, 60 FT.
12	FOOT	CONCRETE FOUNDATION, TYPE A
3.5	FOOT	CONCRETE FOUNDATION, TYPE C
19.5	FOOT	CONCRETE FOUNDATION, TYPE E, 36-INCH DIAMETER
63	FOOT	CONCRETE FOUNDATION, TYPE E, 42-INCH DIAMETER
6	EACH	SIGNAL HEAD, POLYCARBONATE, LED, 1-FACE, 3-SECTION, MAST ARM MOUNTED
4	EACH	SIGNAL HEAD, POLYCARBONATE, LED, 1-FACE, 4-SECTION, MAST ARM MOUNTED
4	EACH	SIGNAL HEAD, POLYCARBONATE, LED, 3-FACE, 1-3 SECTION, 1-4 SECTION, 1-5 SECTION, BRACKET MOUNTED
4	EACH	PEDESTRIAN SIGNAL HEAD, POLYCARBONATE, LED, 2-FACE, BRACKET MOUNTED WITH COUNTDOWN TIMER
22	EACH	TRAFFIC SIGNAL BACKPLATE
8	EACH	PEDESTRIAN PUSH-BUTTON
1	EACH	TEMPORARY TRAFFIC SIGNAL INSTALLATION
1	EACH	REMOVE EXISTING TRAFFIC SIGNAL EQUIPMENT
4	EACH	REMOVE EXISTING HANDHOLE
1	EACH	REMOVE EXISTING DOUBLE HANDHOLE
5	EACH	REMOVE EXISTING CONCRETE FOUNDATION
4	EACH	CAMERA MOUNTING ASSEMBLY
1	EACH	VIDEO VEHICLE DETECTION SYSTEM

NOTE: ALL COMBINATION MAST ARMS SHALL HAVE 15' ARMS ON THE LUMINAIRES WITH FULL CUTOFF.



USER NAME = sparksgw	DESIGNED -	REVISED - WCD 10/17/2013
PLOT SCALE = 40.0000' / in.	DRAWN - BDM	REVISED -
PLOT DATE = Feb-04-2014 01:45:01PM	CHECKED - JSA	REVISED -
	DATE - 7/15/09	REVISED -

**STATE OF ILLINOIS  
DEPARTMENT OF TRANSPORTATION**

**PROPOSED TRAFFIC SIGNAL PLAN  
WABASH AVE. & ASH GROVE/BUNKER HILL RD.**

SCALE: SHEET NO. 12 OF 37 SHEETS STA. TO STA.

F.A.U. RTE.	SECTION	COUNTY	TOTAL SHEETS	SHEET NO.
8012	21(W-3, TS-1, RS-7)	SANGAMON	679	347
CONTRACT NO. 72890				
ILLINOIS FED. AID PROJECT				