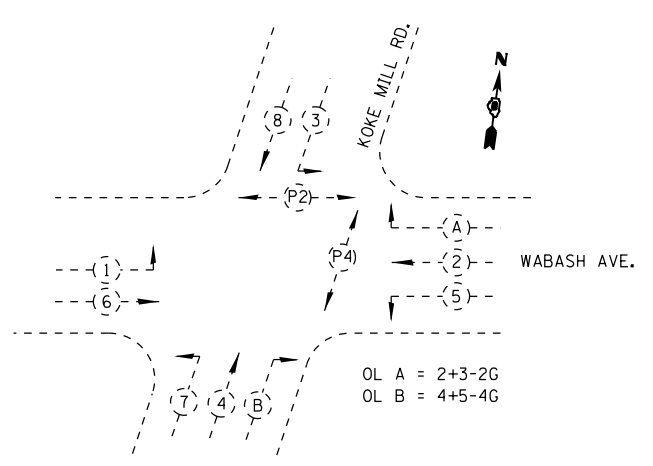
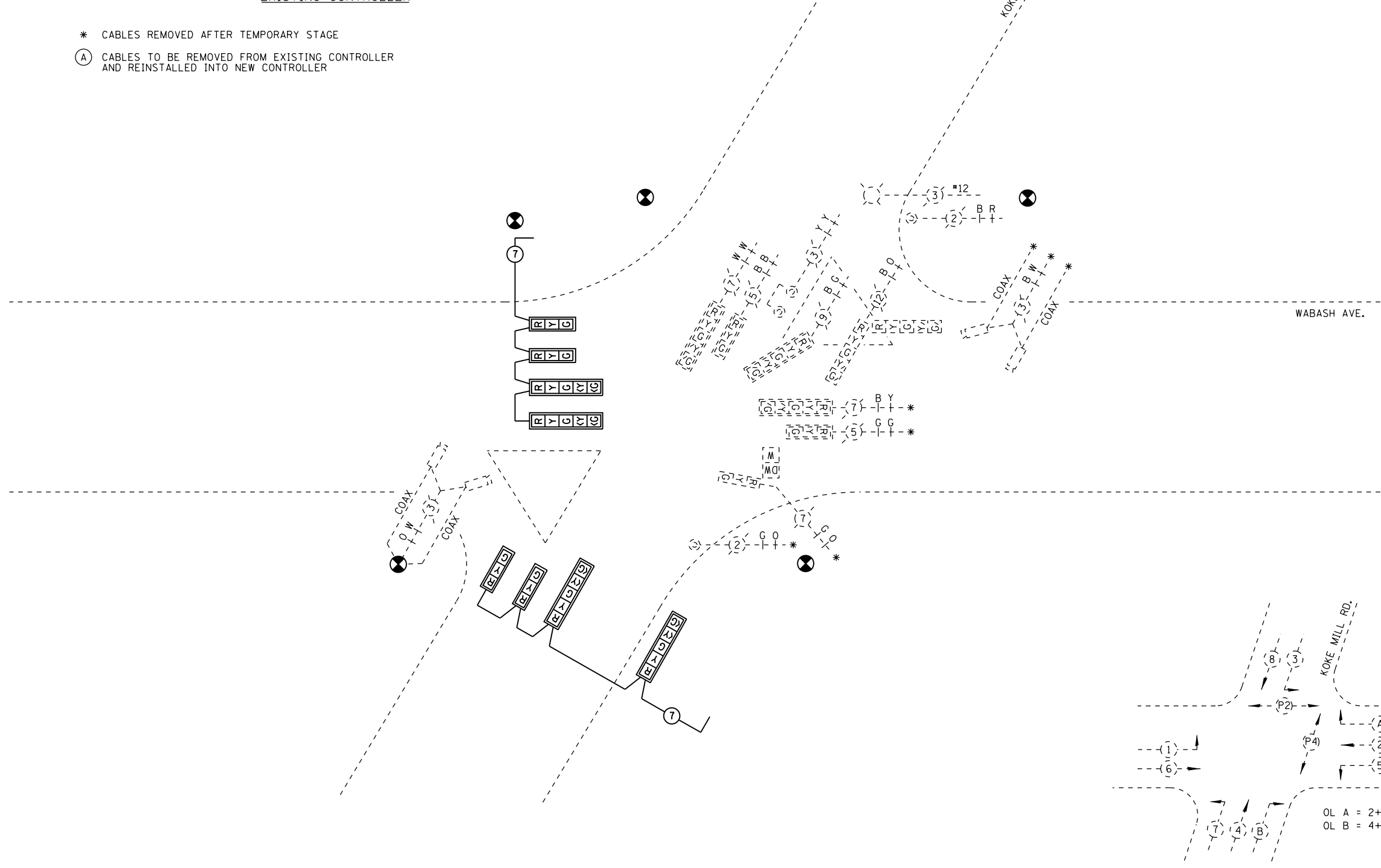


- * CABLES REMOVED AFTER TEMPORARY STAGE
- (A) CABLES TO BE REMOVED FROM EXISTING CONTROLLER AND REINSTALLED INTO NEW CONTROLLER



PHASE DESIGNATION DIAGRAM

NOT TO SCALE

USER NAME = sparksgw PLOT SCALE = 40.0000' / in. PLOT DATE = Feb-04-2014 01:45:52PM	DESIGNED - DRAWN - BDM	REVISED - WCD 10/17/2013 REVISED -	STATE OF ILLINOIS DEPARTMENT OF TRANSPORTATION	TEMPORARY CABLE PLAN WABASH AVE. & KOKE MILL RD.		F.A.U. RTE. 8012	SECTION 21(W-3, TS-1, RS-7)	COUNTY SANGAMON	TOTAL SHEETS 679	SHEET NO. 363
	CHECKED - JSA DATE - 7/15/09	REVISED - REVISED -		SCALE: SHEET NO. 28 OF 37 SHEETS	STA. TO STA.	CONTRACT NO. 72890		ILLINOIS FED. AID PROJECT		

FILE NAME = c:\pw\work\pwt\dot\sparksgw\d0367866\0672890-sh28-km cable 2.dgn