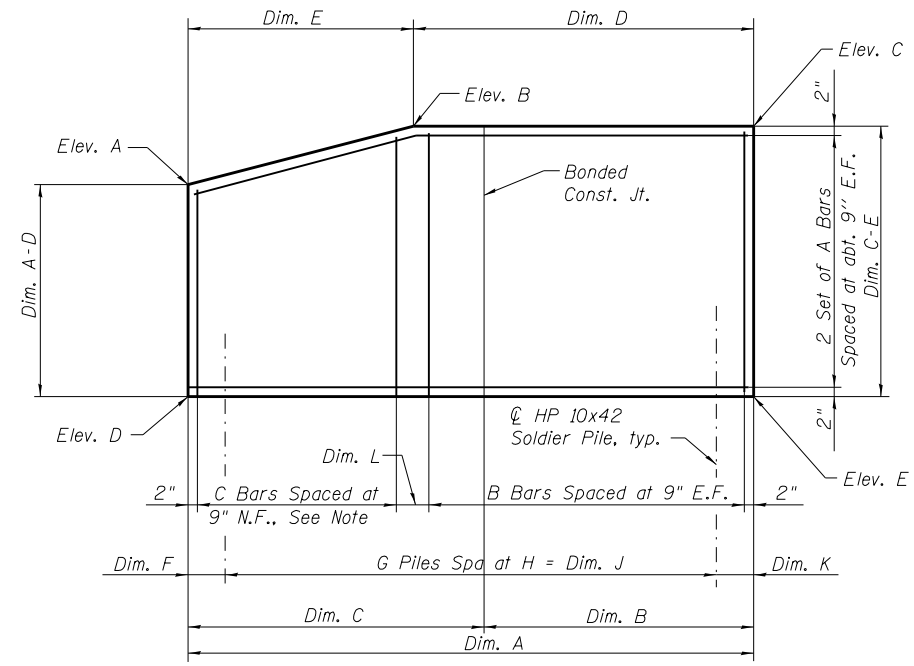


STATE OF ILLINOIS
DEPARTMENT OF TRANSPORTATION

ROUTE NO.	SECTION	COUNTY	TOTAL SHEETS	SHEET NO.
F.A.P. 8012	21W-3, TS-1, RS-7	SANGAMON	679	421
FED. ROAD DIST. NO. 7	ILLINOIS	FED. AID PROJECT		

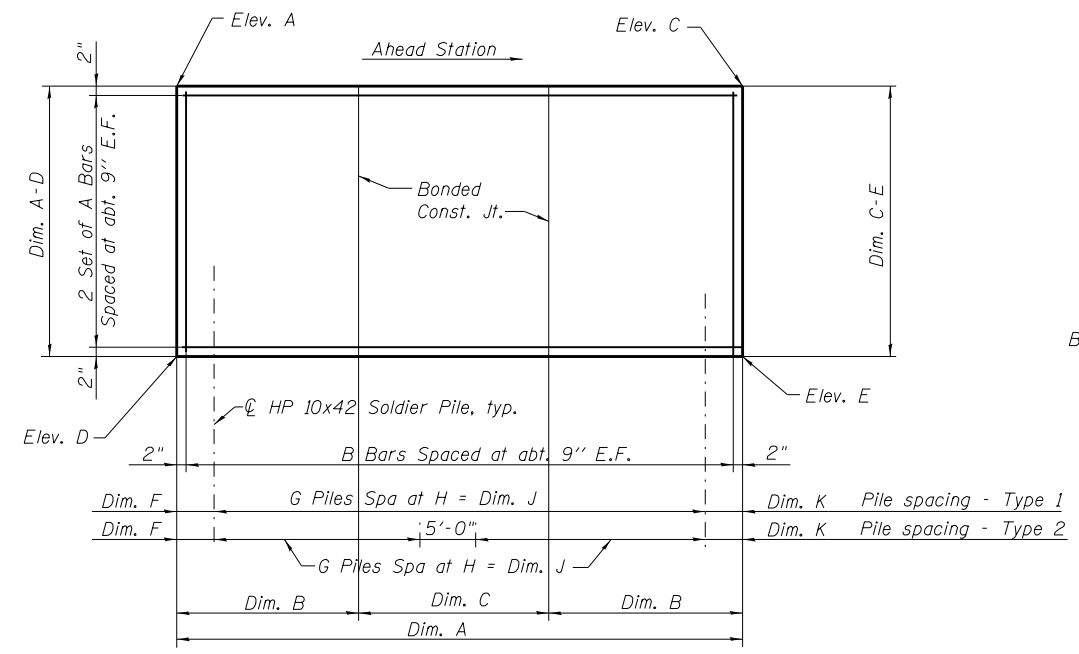
SHEET NO. 5
13 SHEETS

Contract No. 72890

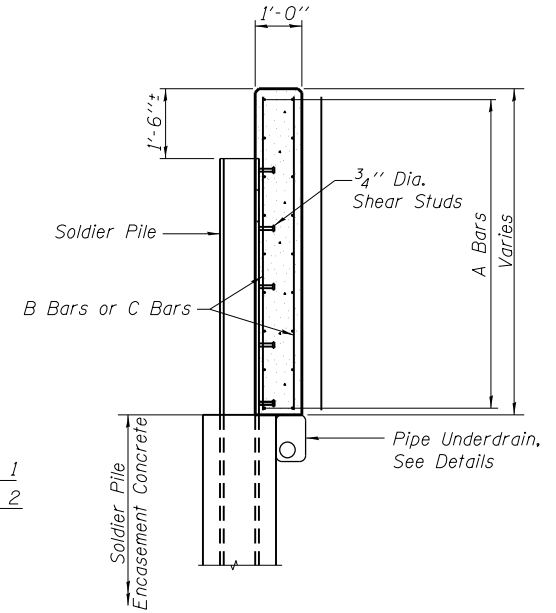


END WALL DETAIL

Notes:
Bend top A Bars in the field to match slope; field cut others to fit.
Order C Bars full length, cut in field to match slope and use the remainder in far face of wall.



INTERMEDIATE WALL DETAIL

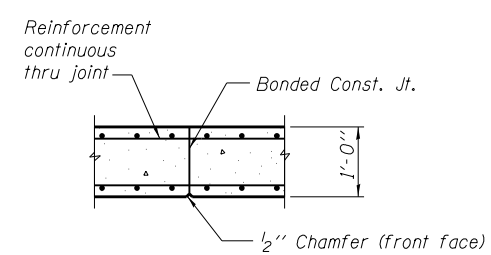


TYPICAL SECTION THRU WALL

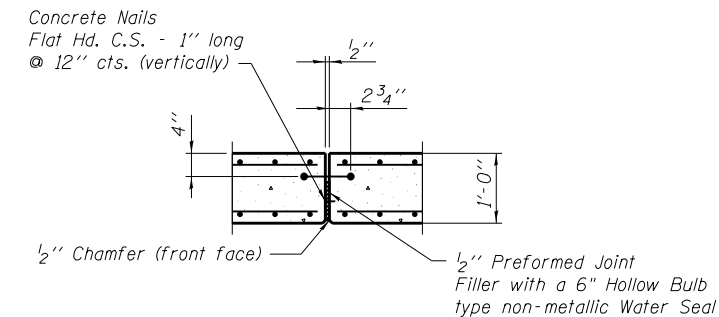
WALL ELEVATIONS

WALL DATA

Wall No.	Detail	Elev. A	Elev. B	Elev. C	Elev. D	Elev. E	Dim. A	Dim. B	Dim. C	Dim. D	Dim. E	Dim. A-D	Dim. C-E	Type	Dim. F	G	H	Dim. J	Dim. K	A Bars	B Bars	C Bars	Dim. L
1 W	End	618.50	621.25	621.28	615.25	615.25	61'-9"	30'-0"	31'-9"	34'-3"	27'-6"	3'-3"	6'-0 ³ / ₈ "	---	3'-9"	7	9'-0"	54'-0"	4'-0"	9- #5H1	46- #5V2	37- #5V1	8"
2 W	Intermediate	621.28	---	621.32	615.25	615.25	60'-0"	20'-0"	20'-0"	---	---	6'-0 ³ / ₈ "	6'-0 ⁷ / ₈ "	1	3'-0"	7	9'-0"	54'-0"	3'-0"	9- #5H1	81- #5V2	---	---
3 W	Intermediate	621.32	---	621.37	615.25	615.25	70'-0"	20'-0"	30'-0"	---	---	6'-0 ⁷ / ₈ "	6'-1 ¹ / ₂ "	2	1'-6"	4	10'-0"	30'-0"	3'-6"	9- #5H2	94- #5V2	---	---
4 W	Intermediate	621.37	---	621.43	615.25	615.25	74'-3"	22'-1 ¹ / ₂ "	30'-0"	---	---	6'-1 ¹ / ₂ "	6'-2 ¹ / ₈ "	1	2'-0"	8	10'-0"	70'-0"	2'-3"	9- #5H2	100- #5V2	---	---
5 W	Intermediate	621.43	---	621.48	615.25	615.25	70'-0"	20'-0"	30'-0"	---	---	6'-2 ¹ / ₈ "	6'-2 ³ / ₄ "	2	1'-6"	4	10'-0"	30'-0"	3'-6"	9- #5H2	94- #5V3	---	---
6 W	End	619.75	621.50	621.48	615.25	615.25	39'-0"	20'-0"	19'-0"	24'-0"	15'-0"	4'-6"	6'-2 ³ / ₄ "	---	4'-6"	4	10'-0"	30'-0"	4'-6"	9- #5H3	33- #5V3	20- #5V4	5"
1 E	End	619.75	621.25	621.25	615.25	615.25	43'-5"	25'-0"	18'-5"	28'-5"	15'-0"	4'-6"	6'-0"	---	3'-5"	5	9'-0"	36'-0"	4'-0"	9- #5H3	39- #5V2	20- #5V4	4"
2 E	Intermediate	621.25	---	621.25	615.25	615.25	70'-0"	20'-0"	30'-0"	---	---	6'-0"	6'-0"	2	1'-6"	4	10'-0"	30'-0"	3'-6"	9- #5H2	94- #5V2	---	---
3 E	Intermediate	621.25	---	621.25	615.25	615.25	74'-3"	22'-1 ¹ / ₂ "	30'-0"	---	---	6'-0"	6'-0"	1	2'-3"	8	10'-0"	70'-0"	2'-0"	9- #5H2	100- #5V2	---	---
4 E	Intermediate	621.25	---	621.25	615.25	615.25	70'-0"	20'-0"	30'-0"	---	---	6'-0"	6'-0"	2	1'-6"	4	10'-0"	30'-0"	3'-6"	9- #5H2	94- #5V2	---	---
5 E	Intermediate	621.25	---	621.25	615.25	615.25	74'-10"	24'-11"	25'-0"	---	---	6'-0"	6'-0"	1	2'-10"	8	10'-0"	70'-0"	2'-0"	9- #5H2	101- #5V2	---	---
6 E	End	618.50	621.25	621.25	615.25	615.25	52'-6"	25'-0"	27'-6"	25'-0"	27'-6"	3'-3"	6'-0"	---	3'-6"	6	9'-0"	45'-0"	4'-0"	9- #5H4	34- #5V2	37- #5V1	5"



BONDED CONSTRUCTION JOINT



EXPANSION JOINT

BILL OF MATERIAL

Bar	No.	Size	Length	Shape
H1	72	#5	32'-3"	---
H2	252	#5	38'-9"	---
H3	72	#5	23'-1"	---
H4	36	#5	27'-7"	---
V1	74	#5	8'-7"	---
V2	1566	#5	5'-8"	---
V3	254	#5	5'-10"	---
V4	40	#5	9'-10"	---

DESIGNED	NJM
CHECKED	KPH
DRAWN	JGC
CHECKED	KPH

**WALL DETAILS
EAST AND WEST RETAINING WALLS
WABASH AVE. AT I-72
F.A.P. ROUTE 8012 -
SECTION 21W-3, TS-1, RS-7)
SANGAMON COUNTY**