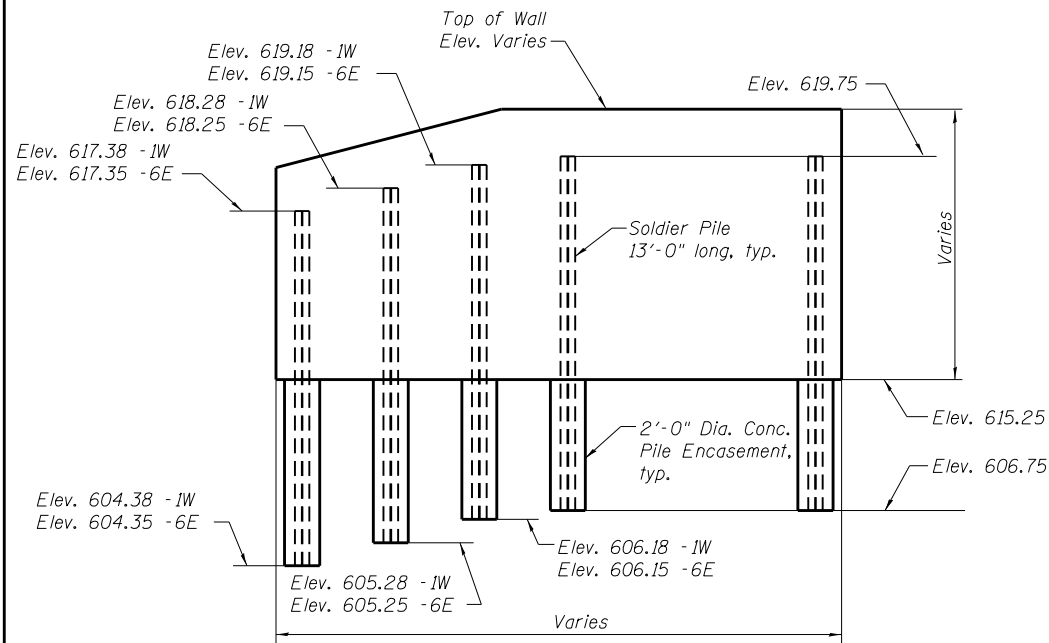


STATE OF ILLINOIS
DEPARTMENT OF TRANSPORTATION

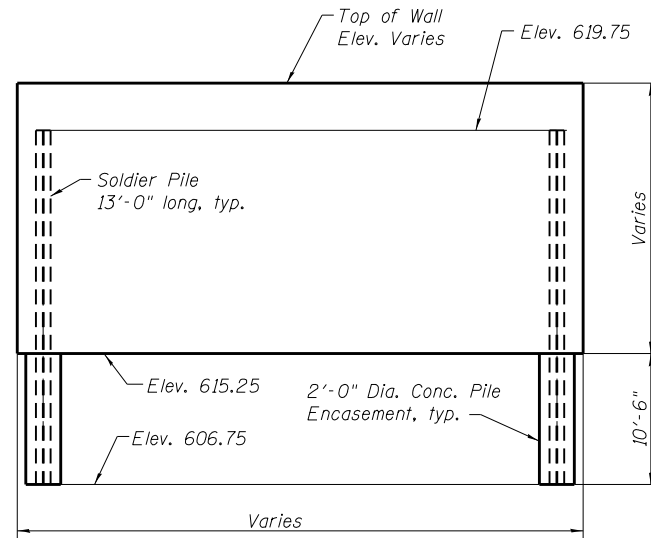
ROUTE NO.	SECTION	COUNTY	TOTAL SHEETS	SHEET NO.
F.A.P. 8012	21W-3, RS-7	SANGAMON	679	422
FED. ROAD DIST. NO. 7	ILLINOIS	FED. AID PROJECT		

SHEET NO. 6
13 SHEETS

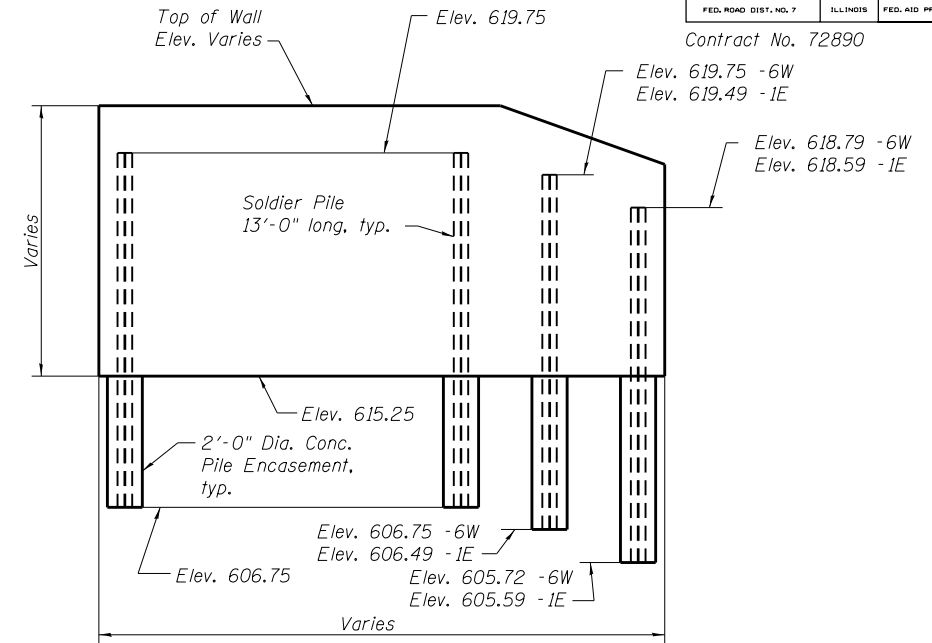
Contract No. 72890



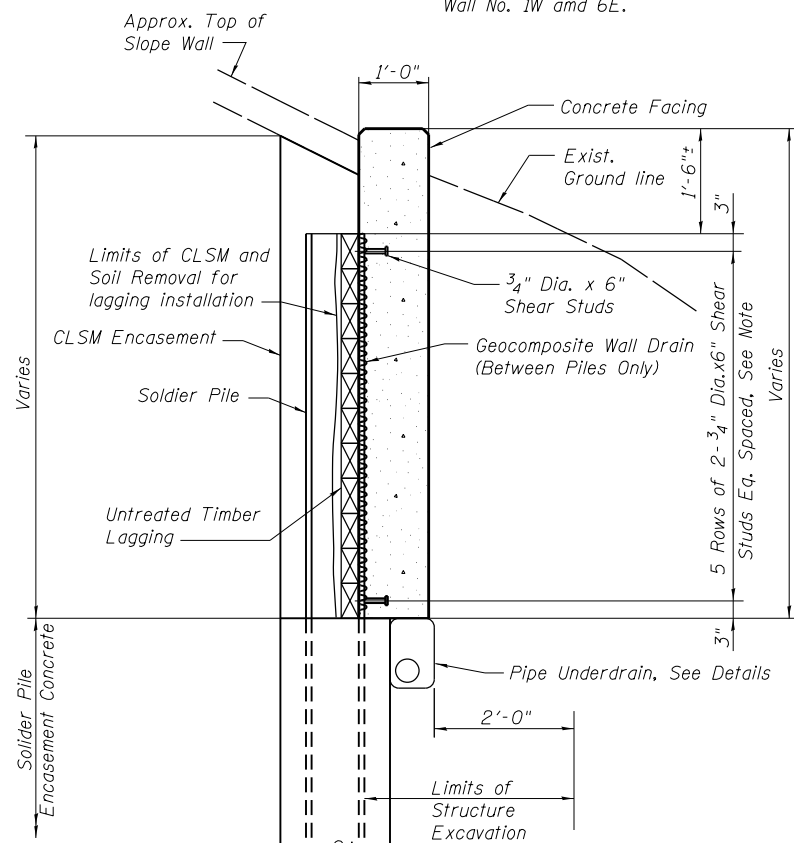
END WALL PILE DETAILS
Wall No. 1W and 6E.



INTERMEDIATE WALL PILE DETAILS
Wall Nos. 2 W thru 5 W and 2 E thru 5 E



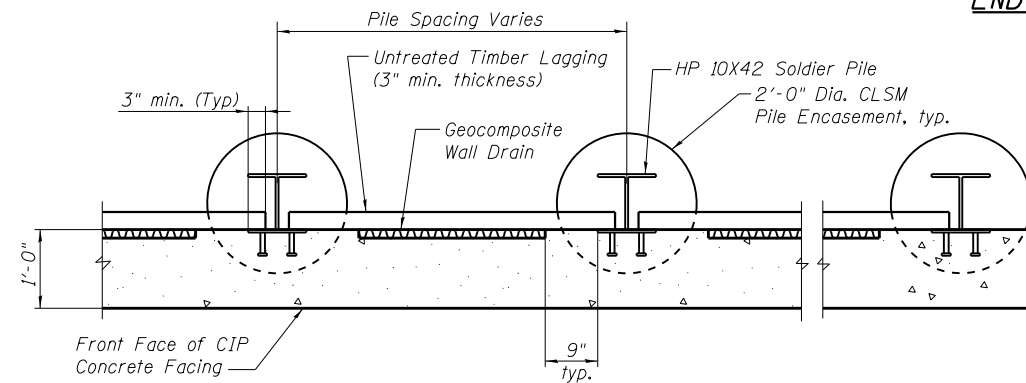
END WALL PILE DETAILS
Wall No. 6W and 1E.



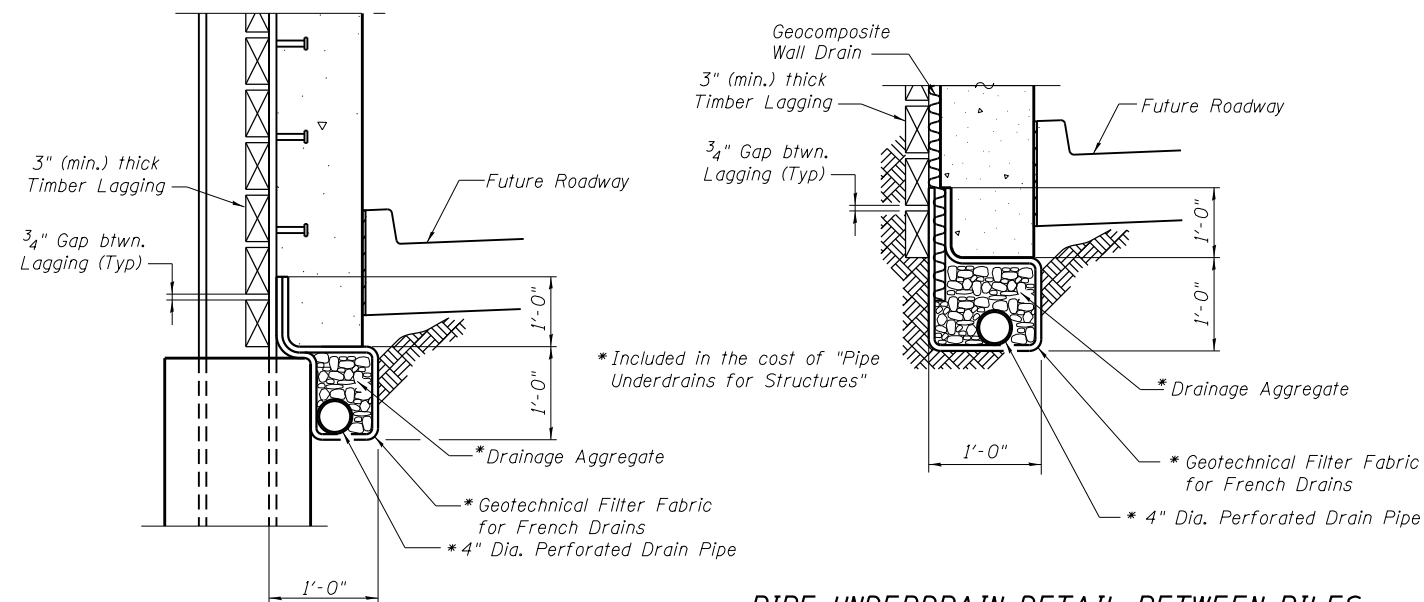
TYPICAL SECTION THRU WALL

Note: Shear Studs shall be Granular or Solid Flux Filled Studs Conforming to Article 1006.32 of the Standard Specifications. Automatically end welded.
CLSM = Controlled Low-Strength Material.

DESIGNED	NJM
CHECKED	KPH
DRAWN	JGC
CHECKED	KPH



TYPICAL HORIZONTAL WALL SECTION



PIPE UNDERDRAIN DETAIL BETWEEN PILES

PIPE UNDERDRAIN DETAIL AT PILES

Notes: See sheet 5 for spacing of piles.
Slope pipe underdrain to proposed ditches, See Roadway Plans.

WALL DETAILS
EAST AND WEST RETAINING WALLS
WABASH AVE. AT I-72
F.A.P. ROUTE 8012 -
SECTION 21W-3, TS-1, RS-7
SANGAMON COUNTY