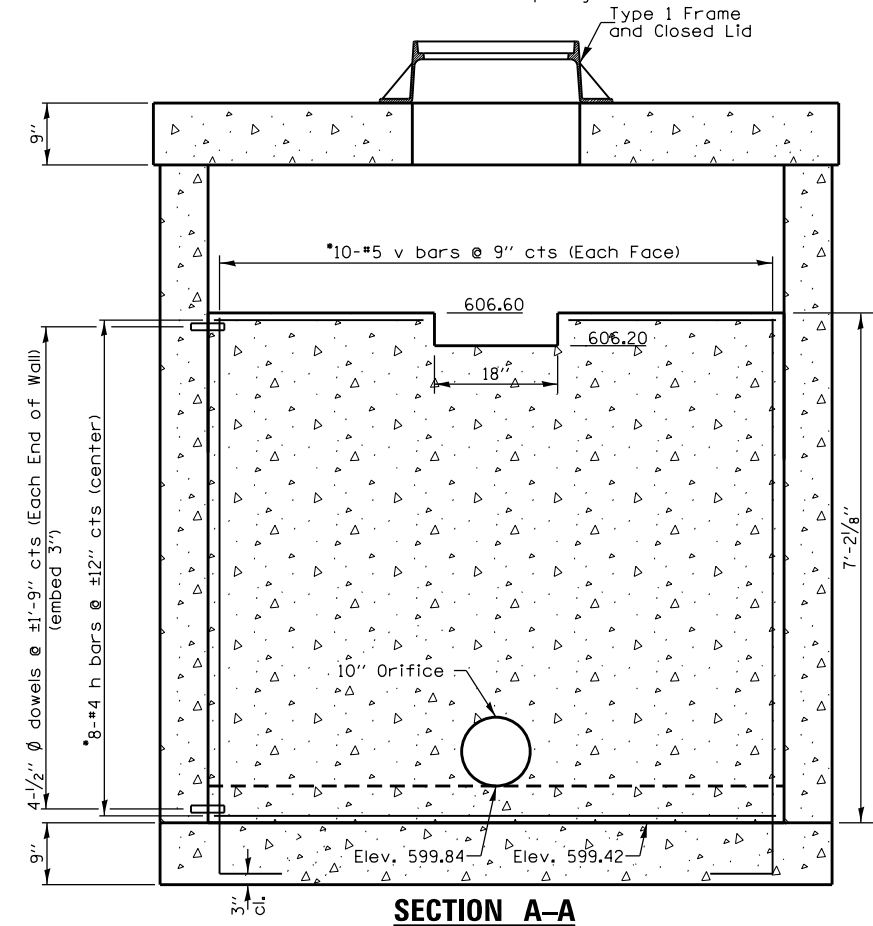
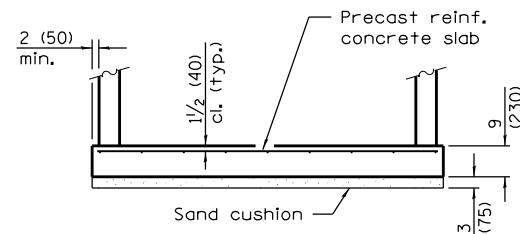
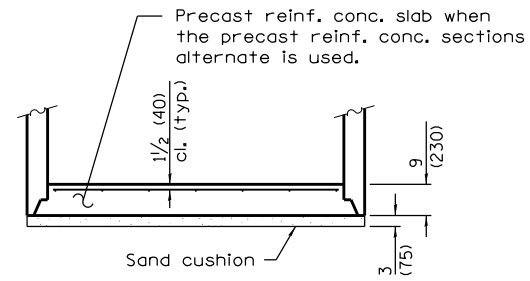


A ELEVATION

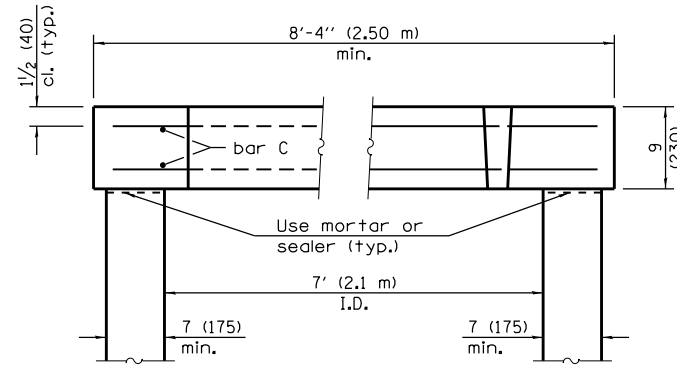
(With Flat Slab Top Only)



SECTION A-A



ALTERNATE BOTTOM SLABS



SECTION B-B

(Typical of each top)

*Note: trim bars as necessary for 10" Orifice and cut out.

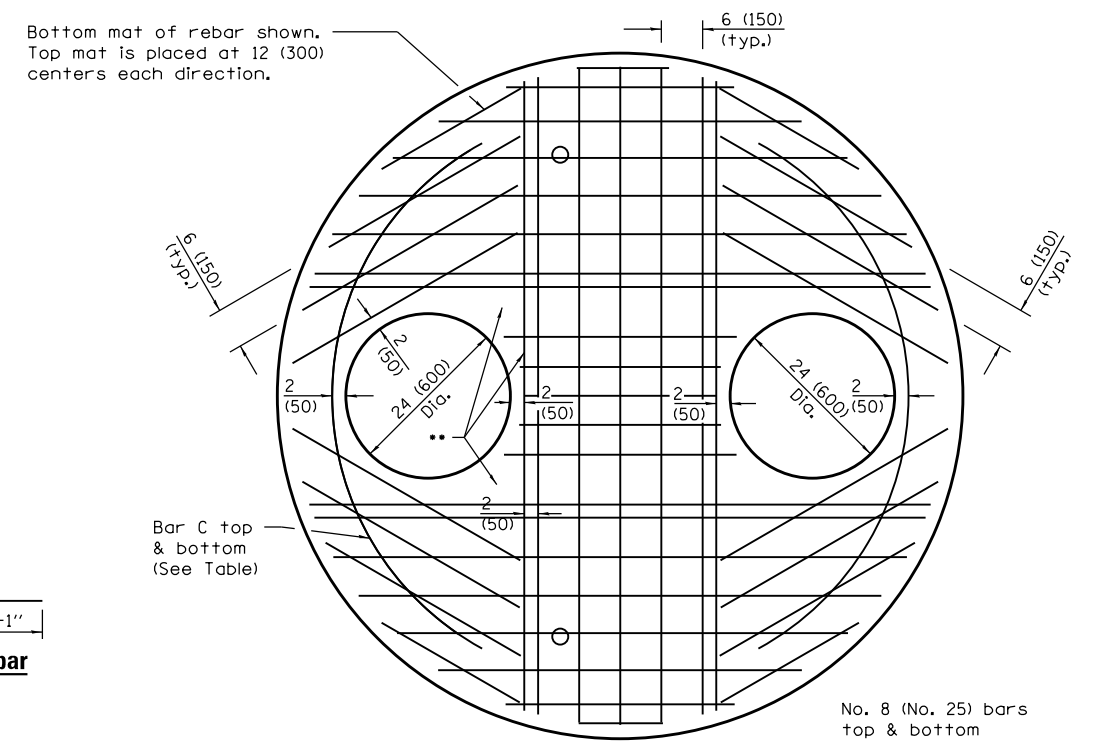
GENERAL NOTES

- Joint configuration and dimensions of flat slab top shall match and fit the riser joint detail.
- Lifting devices shall be approved by the Engineer.
- Bottom slabs shall be reinforced with a minimum of 0.31 sq. in./ft. (660 sq. mm/m) in both directions with a maximum spacing of 12 (300).
- Bottom slabs may be connected to the riser as determined by the fabricator; however, only a single row of reinforcement around the perimeter may be utilized.

See Standard 602701 for details of manhole steps.

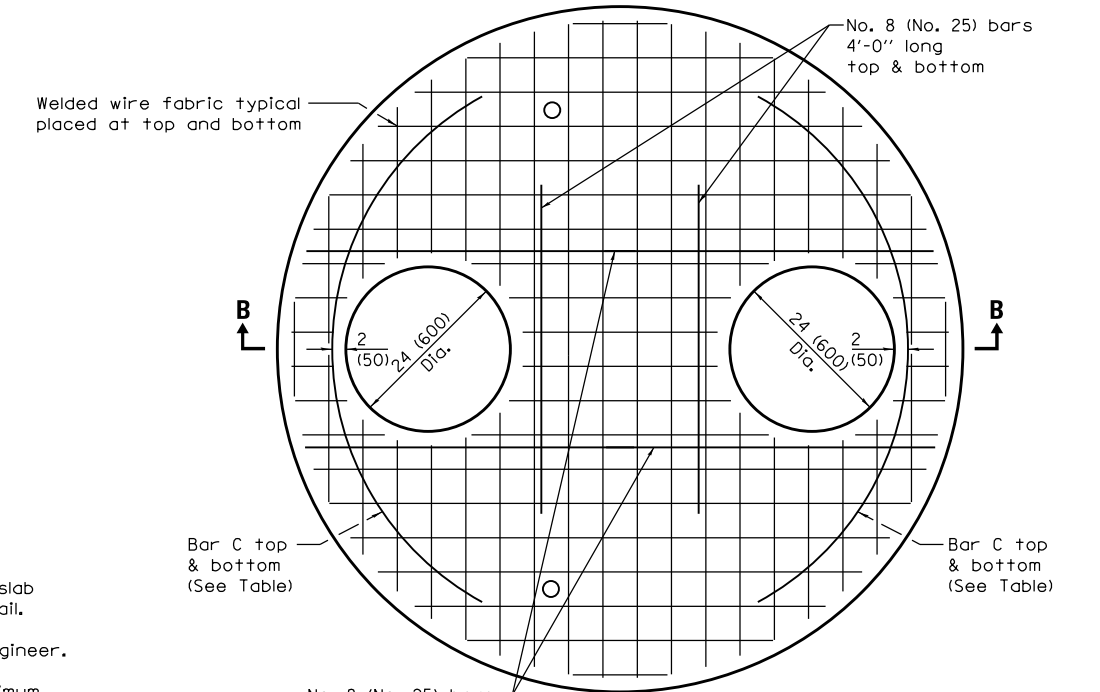
All dimensions are in inches (millimeters) unless otherwise shown.

ALTERNATE MATERIALS FOR RISER WALLS	T (min)
Concrete Masonry Units	5 (125)
Precast Reinforced Concrete Sections	4 (100)
Cast-In-Place Concrete	6 (150)



PLAN

Showing Rebar Reinforcement



PLAN

Showing Welded Wire Fabric Reinforcement

Diameter of opening	Reinforcement Bar Size	Reinforcement "As" WWF each direction	No. 4 (No. 13) Bar C	
			Length	Radius
24 (600)	Bottom mat No. 8 (No. 25)	Bottom mat **** 1.57 sq. in./ft. (3325 sq. mm/m)	7'-6" (2.30 m)	3'-6" (1.067 m)
	Top mat No. 4 (No. 13)	Top mat **** 0.20 sq. in./ft. (425 sq. mm/m)		