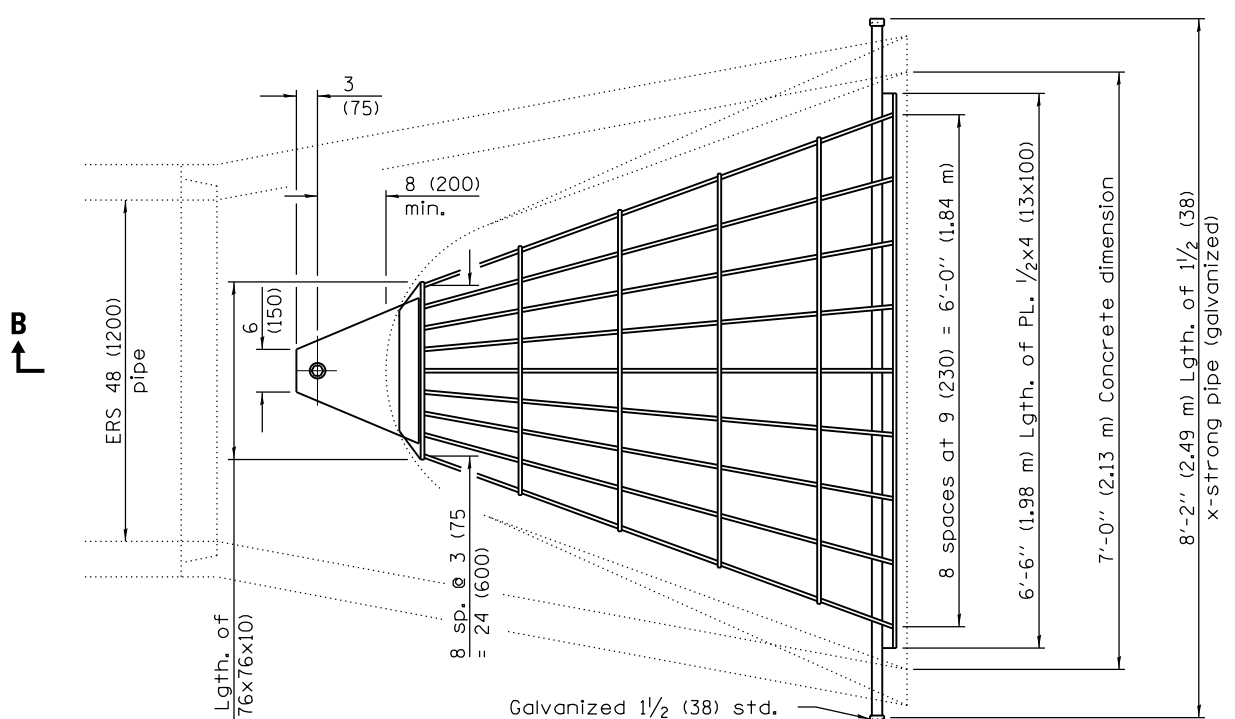


**PLAN**

Quantity of steel = 320 lbs. (145 kg)

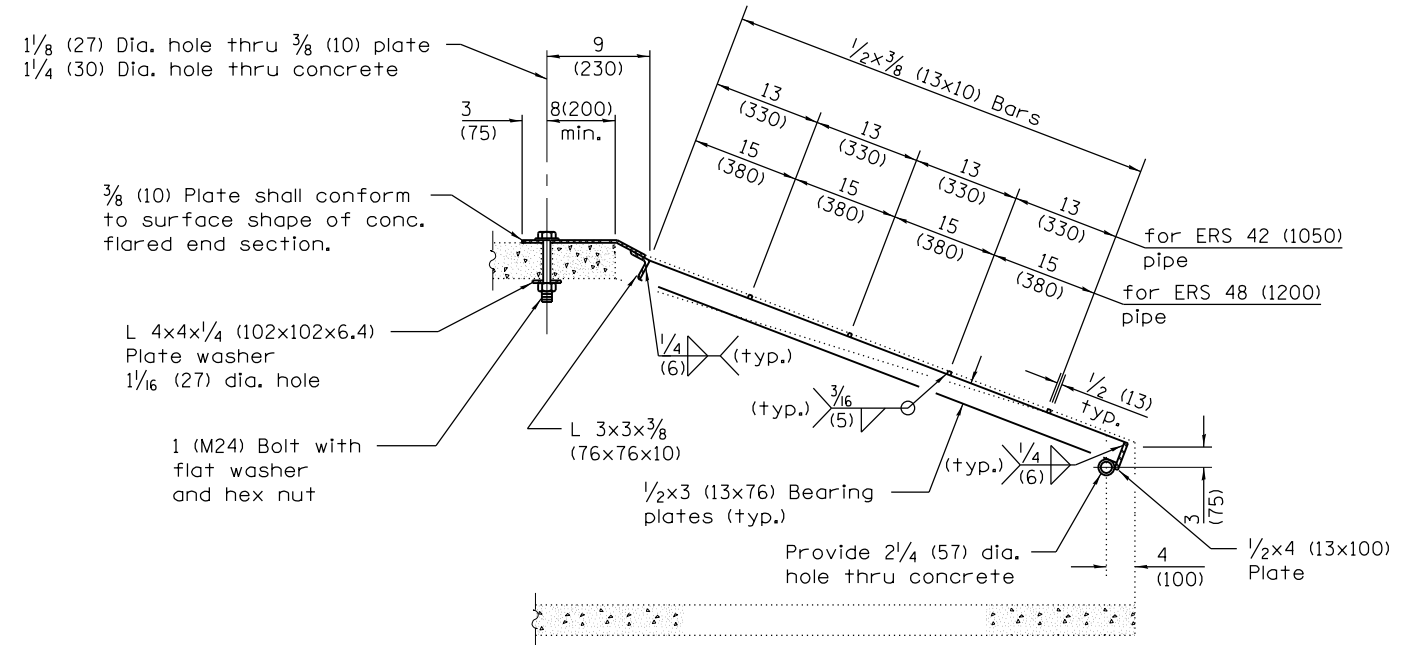


**PLAN**

Quantity of steel = 400 lbs. (181 kg)

**B**

**B**



**SECTION B-B**

**GENERAL NOTES**

Approximate quantity of steel shown includes total quantity of grating, bolts, nuts, washers and steel pipe.

Holes in the precast concrete flared end sections shall be cored to the diameters noted. If cone-out on the other end of the hole occurs, the hole shall be filled with grout to correct the diameter of the hole.

All dimensions are in inches (millimeters) unless otherwise shown.

FILE NAME =	USER NAME = edwardsjd	DESIGNED - BMB	REVISED - JDE 03/04/2014	<b>STATE OF ILLINOIS DEPARTMENT OF TRANSPORTATION</b>	<b>PRECAST REINFORCED CONCRETE ELLIPTICAL FLARED DROP BOX END SECTION</b>			F.A.U. RTE.	SECTION	COUNTY	TOTAL SHEETS	SHEET NO.	
Default	2890-shd-details-drop_box_end_section.dgn	DRAWN - TJD	REVISED -		SCALE: N/A	SHEET 2	OF 2 SHEETS	STA.	TO STA.	8012	21(W-3, TS-1, RS-7)	SANGAMON	679 436A
	PLOT SCALE = 2.0000' / in.	CHECKED - AWM	REVISED -										CONTRACT NO. 72890
	PLOT DATE = Mar-04-2014 03:53:30PM	DATE - 12/04/2013	REVISED -										ILLINOIS FED. AID PROJECT