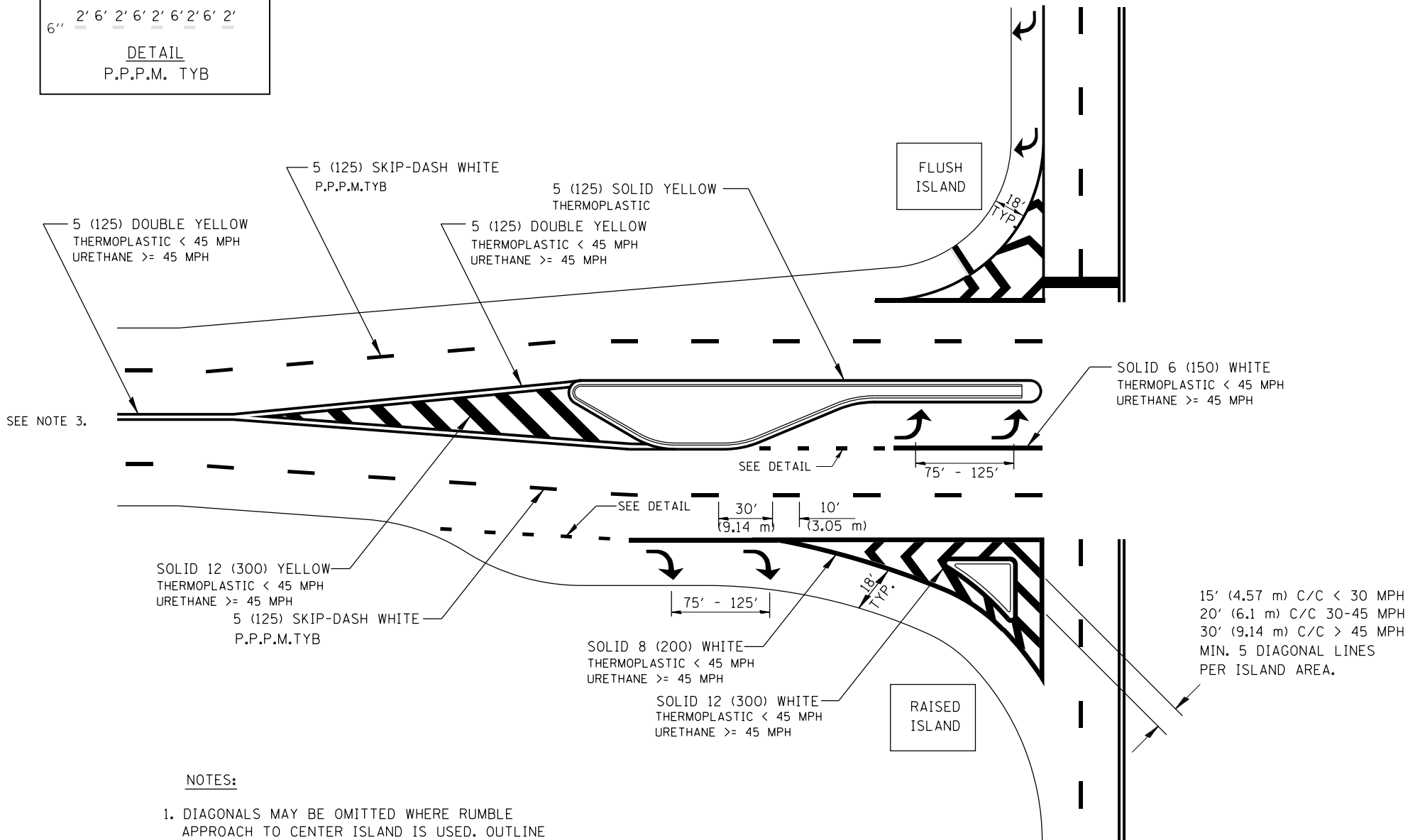


6" 2' 6" 2' 6" 2' 6" 2' 6" 2' 6" 2'

DETAIL
P.P.P.M. TYB



SEE NOTE 3.

SEE DETAIL

SEE DETAIL

SOLID 12 (300) YELLOW
THERMOPLASTIC < 45 MPH
URETHANE >= 45 MPH

5 (125) SKIP-DASH WHITE
P.P.P.M.TYB

SOLID 8 (200) WHITE
THERMOPLASTIC < 45 MPH
URETHANE >= 45 MPH

SOLID 12 (300) WHITE
THERMOPLASTIC < 45 MPH
URETHANE >= 45 MPH

SOLID 6 (150) WHITE
THERMOPLASTIC < 45 MPH
URETHANE >= 45 MPH

15' (4.57 m) C/C < 30 MPH
20' (6.1 m) C/C 30-45 MPH
30' (9.14 m) C/C > 45 MPH
MIN. 5 DIAGONAL LINES
PER ISLAND AREA.

NOTES:

1. DIAGONALS MAY BE OMITTED WHERE RUMBLE APPROACH TO CENTER ISLAND IS USED. OUTLINE ALL RUMBLE AREA WITH SINGLE YELLOW LINE.
2. SEE FIGURE 3-13 OF THE MUTCD FOR RECOMMENDED TAPER LENGTHS.
3. BEGIN NO PASSING ZONE 500FT BEFORE PAINTED MEDIAN. RELEASE NO PASSING ZONE 100 FT AFTER PAINTED MEDIAN WHERE APPROPRIATE.

**OFF-SET ISLANDS
AND
ISLAND APPROACH MARKINGS**

All dimensions are in inches
(millimeters) unless otherwise noted.

ILLINOIS DEPARTMENT OF TRANSPORTATION
DISTRICT 6 PAVEMENT MARKING STANDARDS
DATE 2013-01 NOT TO SCALE

D6PAVMRK.DGN
•DGN-ONLY•

FILE NAME =	USER NAME = sparksgw	DESIGNED -	REVISED -
ct:\pwwork\pwwork\sparksgw\10373645\0672890-sht-district.details.dgn		DRAWN -	REVISED -
		CHECKED -	REVISED -
		DATE -	REVISED -

**STATE OF ILLINOIS
DEPARTMENT OF TRANSPORTATION**

DISTRICT 6 PAVEMENT MARKING DETAILS

SCALE: SHEET 10 OF 17 SHEETS STA. TO STA.

F.A.U. RTE.	SECTION	COUNTY	TOTAL SHEETS	SHEET NO.
8012	21(W-3, TS-1, RS-7)	SANGAMON	679	462
CONTRACT NO. 72890				

ILLINOIS FED. AID PROJECT