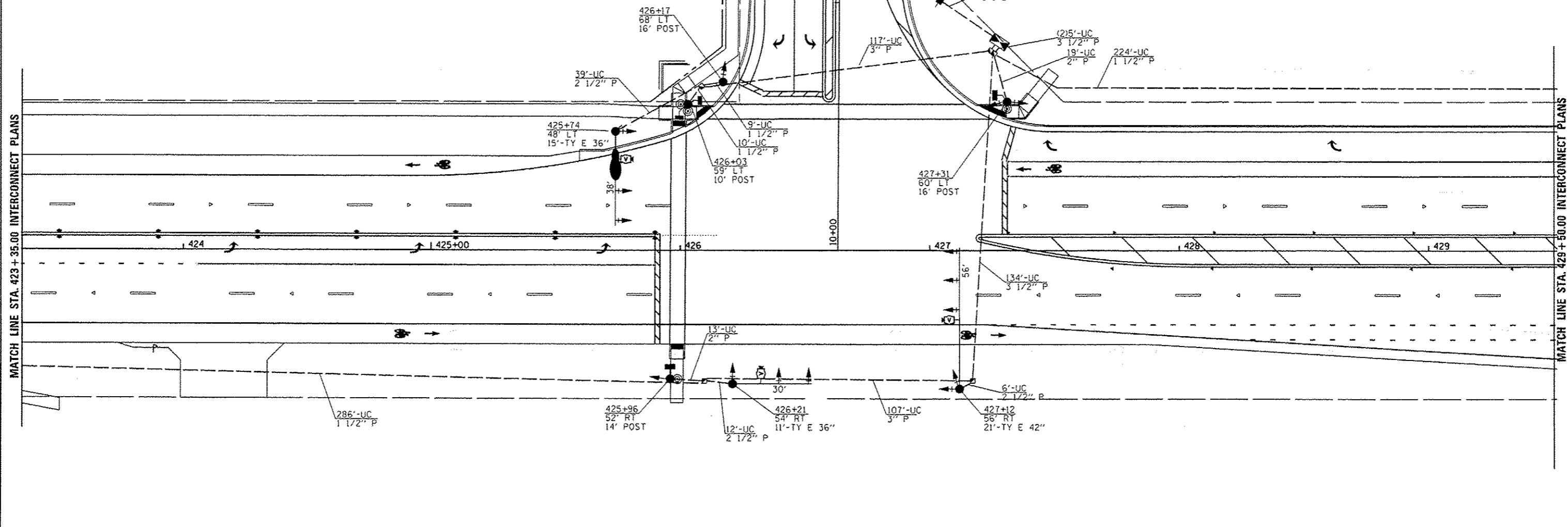
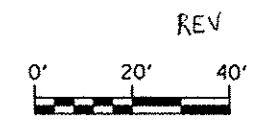


QUANTITY	UNIT	ITEM
1	EACH	SERVICE INSTALLATION, TYPE A
2741	FOOT	UNDERGROUND CONDUIT, PVC, 1 1/2" DIA.
32	FOOT	UNDERGROUND CONDUIT, PVC, 2" DIA.
57	FOOT	UNDERGROUND CONDUIT, PVC, 2 1/2" DIA.
224	FOOT	UNDERGROUND CONDUIT, PVC, 3"
144	FOOT	UNDERGROUND CONDUIT, PVC, 3 1/2"
3	EACH	HANDHOLE
1	EACH	DOUBLE HANDHOLE
7	EACH	GULFBOX JUNCTION, COMPOSITE CONCRETE
229	FOOT	ELECTRIC CABLE IN CONDUIT, 600V (XLP-TYPE USE) 3-1/C NO. 10
1	EACH	LUMINAIRE, SODIUM VAPOR, HORIZONTAL MOUNT, PHOTO-CELL CONTROL, 400 WATT
1	EACH	FULL-ACTUATED CONTROLLER AND TYPE IV CABINET
1	EACH	UNINTERUPTIBLE POWER SUPPLY, STANDARD
1	EACH	TRANSCEIVER - FIBER OPTIC
3000	FOOT	FIBER OPTIC CABLE IN CONDUIT, NO. 62.5/125, MM12F 5M12F
346	FOOT	ELECTRIC CABLE IN CONDUIT, SIGNAL, NO. 14 2C
532	FOOT	ELECTRIC CABLE IN CONDUIT, SIGNAL, NO. 14 3C
1302	FOOT	ELECTRIC CABLE IN CONDUIT, SIGNAL, NO. 14 5C
930	FOOT	ELECTRIC CABLE IN CONDUIT, SIGNAL, NO. 14 7C
186	FOOT	ELECTRIC CABLE IN CONDUIT, SIGNAL, NO. 14 9C
61	FOOT	ELECTRIC CABLE IN CONDUIT, SIGNAL, NO. 14 12C
767	FOOT	ELECTRIC CABLE IN CONDUIT, SIGNAL, NO. 18, 3C
43	FOOT	ELECTRIC CABLE IN CONDUIT, SERVICE, NO. 6 3C
579	FOOT	ELECTRIC CABLE IN CONDUIT, EQUIPMENT GROUNDING CONDUCTOR, NO. 6 1C
1	EACH	TRAFFIC SIGNAL POST, ALUMINUM, 10 FT.
1	EACH	TRAFFIC SIGNAL POST, ALUMINUM, 14 FT.
2	EACH	TRAFFIC SIGNAL POST, ALUMINUM, 16 FT.

QUANTITY	UNIT	ITEM
1	EACH	STEEL MAST ARM ASSEMBLY AND POLE, 30 FT.
1	EACH	STEEL MAST ARM ASSEMBLY AND POLE, 56 FT.
1	EACH	STEEL COMBINATION MAST ARM ASSEMBLY AND POLE, 38 FT.
12	FOOT	CONCRETE FOUNDATION, TYPE A
3.5	FOOT	CONCRETE FOUNDATION, TYPE C
26	FOOT	CONCRETE FOUNDATION, TYPE E, 36-INCH DIAMETER
21	FOOT	CONCRETE FOUNDATION, TYPE E, 42-INCH DIAMETER
2	EACH	SIGNAL HEAD, POLYCARBONATE, LED, 1-FACE, 3-SECTION, BRACKET MOUNTED
6	EACH	SIGNAL HEAD, POLYCARBONATE, LED, 1-FACE, 3-SECTION, MAST ARM MOUNTED
1	EACH	SIGNAL HEAD, POLYCARBONATE, LED, 1-FACE, 4-SECTION, MAST ARM MOUNTED
1	EACH	SIGNAL HEAD, POLYCARBONATE, LED, 2-FACE, 3-SECTION, BRACKET MOUNTED
1	EACH	SIGNAL HEAD, POLYCARBONATE, LED, 2-FACE, 1-3 SECTION, 1-4 SECTION, BRACKET MOUNTED
2	EACH	PEDESTRIAN SIGNAL HEAD, POLYCARBONATE, LED, 1-FACE, BRACKET MOUNTED WITH COUNTDOWN TIMER
1	EACH	PEDESTRIAN SIGNAL HEAD, POLYCARBONATE, LED, 2-FACE, BRACKET MOUNTED WITH COUNTDOWN TIMER
15	EACH	TRAFFIC SIGNAL BACKPLATE
4	EACH	PEDESTRIAN PUSH-BUTTON
1	EACH	TEMPORARY TRAFFIC SIGNAL INSTALLATION
1	EACH	REMOVE EXISTING TRAFFIC SIGNAL EQUIPMENT
2	EACH	REMOVE EXISTING HANDHOLE
1	EACH	REMOVE EXISTING DOUBLE HANDHOLE
7	EACH	REMOVE EXISTING CONCRETE FOUNDATION
3	EACH	CAMERA MOUNTING ASSEMBLY
1	EACH	VIDEO VEHICLE DETECTION SYSTEM



NOTE: ALL COMBINATION MAST ARMS SHALL HAVE 15' ARMS ON THE LUMINAIRES WITH FULL CUTOFF.



USER NAME - sparkgw PLOT SCALE - 40,000.00' / in. PLOT DATE - Feb-04-2014 01:45:12PM	DESIGNED - DRAWN - BDM CHECKED - JSA DATE - 7/15/09	REVISED - WCD 10/17/2013 REVISED - REVISED - REVISED -	<b>STATE OF ILLINOIS</b> <b>DEPARTMENT OF TRANSPORTATION</b>	<b>PROPOSED TRAFFIC SIGNAL PLAN</b> <b>WABASH AVE. &amp; ARCHER ELEVATOR RD.</b>	F.A.U. RTE. 8012 SECTION 21W-3, TS-1, RS-7) COUNTY SANGAMON TOTAL SHEETS 679 SHEET NO. 351 CONTRACT NO. 72890
--	--	---	---	---	--