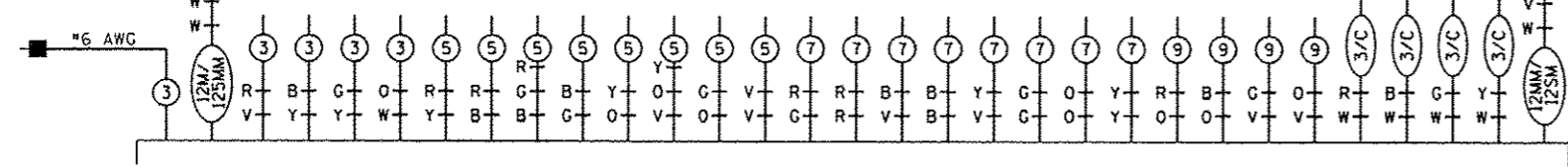


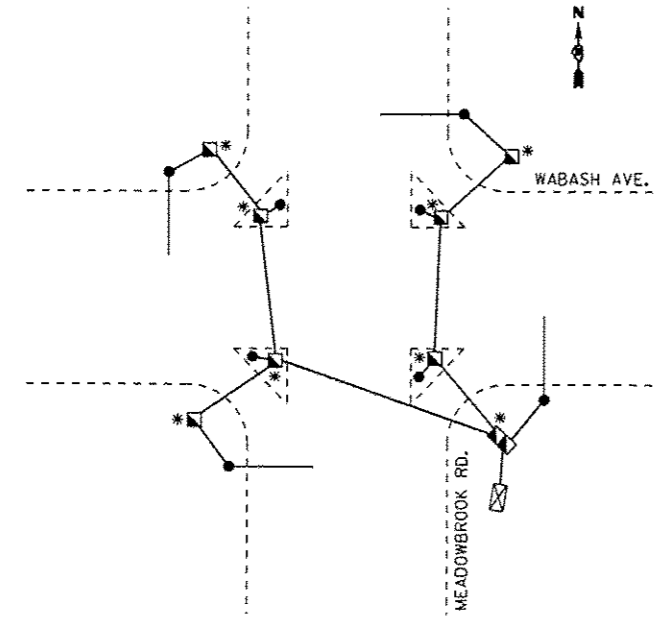
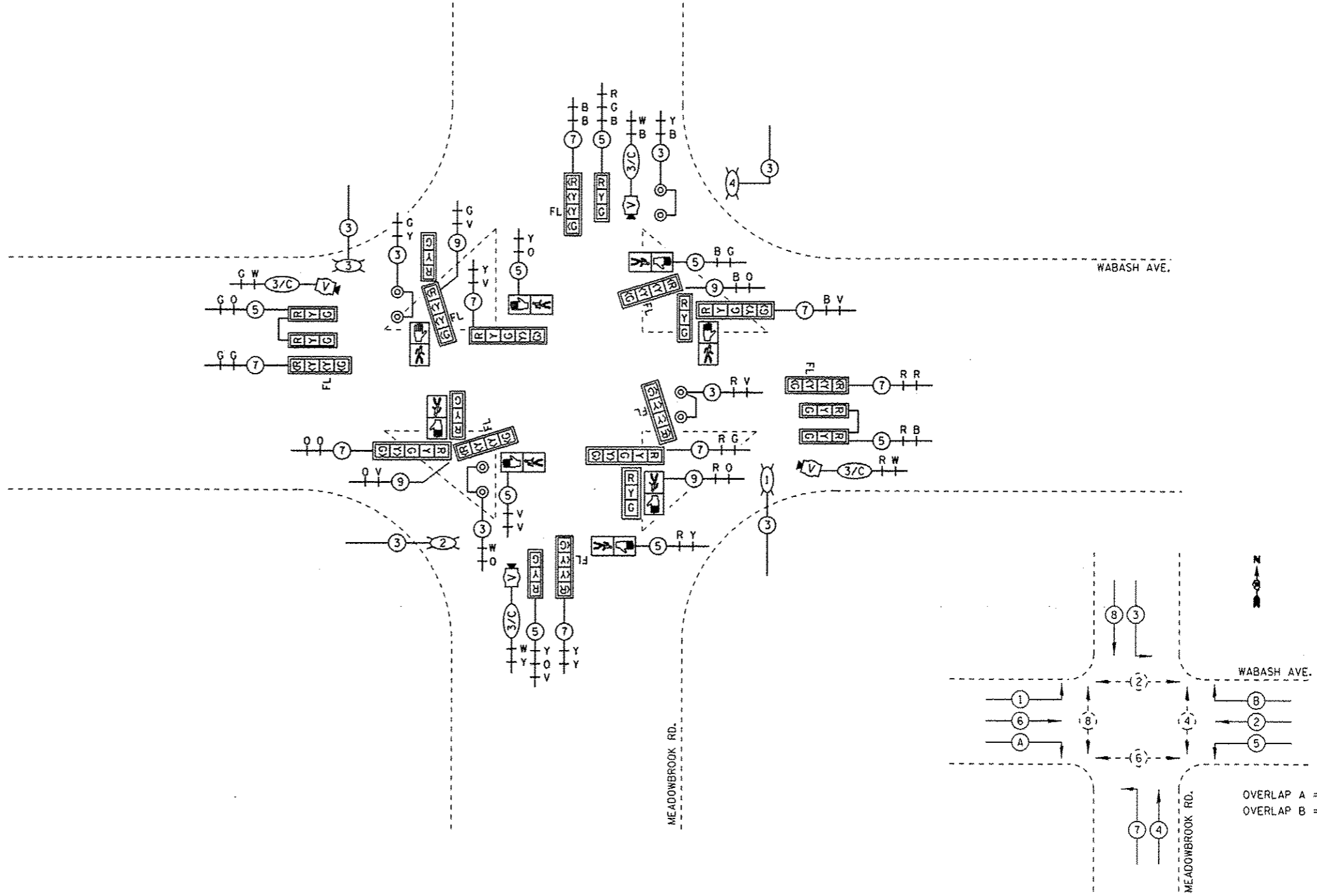
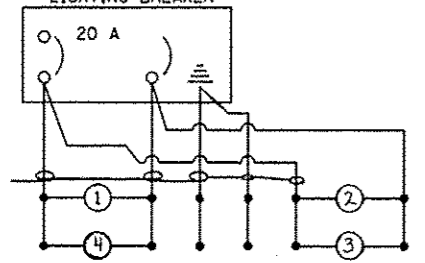
INTERCONNECT TO ARCHER ELEVATOR RD.

INTERCONNECT TO MERCANTILE DR.



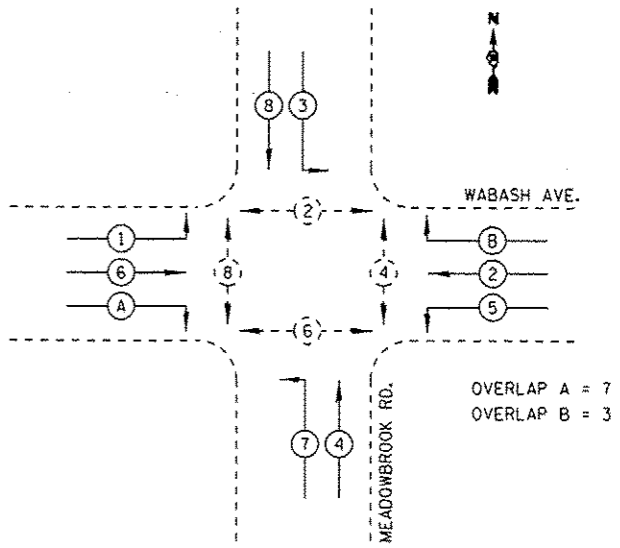
EXISTING CONTROLLER

LIGHTING BREAKER



GROUNDING SCHEMATIC

* GROUNDING CABLE SPLICED BUT NOT BONDED TO COMPOSITE CONCRETE HANDHOLE



PHASE DESIGNATION DIAGRAM

OVERLAP A = 7
OVERLAP B = 3

REV

NOT TO SCALE

USER NAME = sparkgw	DESIGNED -	REVISED - WCD 10/17/2013
PLOT SCALE = 40.00000 1 / in.	DRAWN - BDM	REVISED -
PLOT DATE = Feb-04-2014 01:45:37PM	CHECKED - JSA	REVISED -
	DATE - 7/15/09	REVISED -

STATE OF ILLINOIS
DEPARTMENT OF TRANSPORTATION

PROPOSED CABLE PLAN
WABASH AVE. & MEADOWBROOK RD.

SCALE: SHEET NO. 21 OF 37 SHEETS STA. TO STA.

F.A.U. RTE.	SECTION	COUNTY	TOTAL SHEETS	SHEET NO.
0012	21(W-3, TS-1, RS-7)	SANGAMON	679	356
CONTRACT NO. 72890				

ILLINOIS FED. AID PROJECT