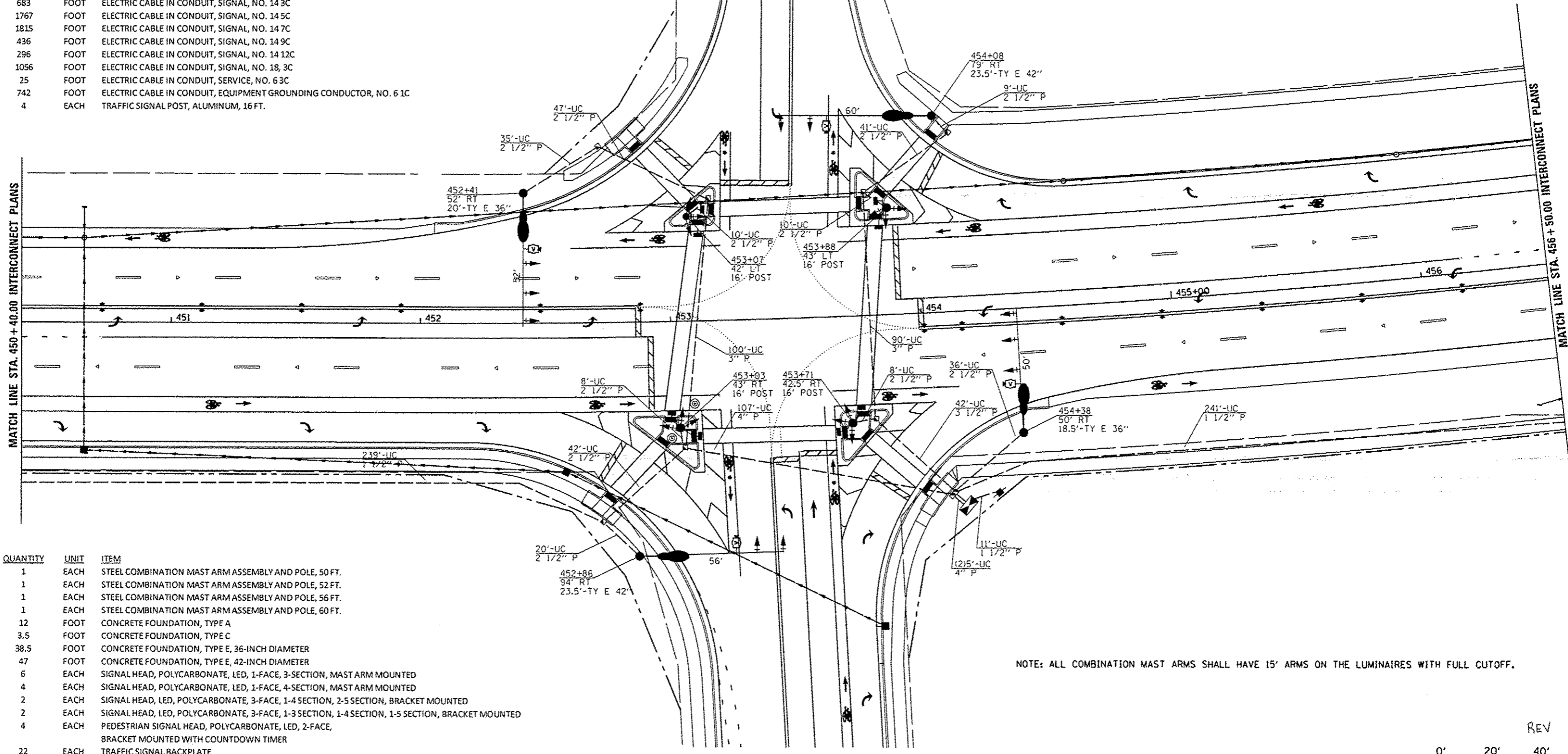


QUANTITY	UNIT	ITEM
1	EACH	SERVICE INSTALLATION, TYPE A
1788	FOOT	UNDERGROUND CONDUIT, PVC, 1 1/2" DIA.
246	FOOT	UNDERGROUND CONDUIT, PVC, 2 1/2" DIA.
190	FOOT	UNDERGROUND CONDUIT, PVC, 3"
42	FOOT	UNDERGROUND CONDUIT, PVC, 3 1/2"
117	FOOT	UNDERGROUND CONDUIT, PVC, 4"
9	EACH	HANDHOLE
1	EACH	DOUBLE HANDHOLE
4	EACH	GULFBOX JUNCTION, COMPOSITE CONCRETE
890	FOOT	ELECTRIC CABLE IN CONDUIT, 600V (XLP-TYPE USE) 3-1/C NO. 10
4	EACH	LUMINAIRE, SODIUM VAPOR, HORIZONTAL MOUNT, PHOTO-CELL CONTROL, 400 WATT
1	EACH	FULL-ACTUATED CONTROLLER AND TYPE IV CABINET
1	EACH	UNINTERUPTIBLE POWER SUPPLY, STANDARD
1	EACH	TRANSCEIVER - FIBER OPTIC
2958	FOOT	FIBER OPTIC CABLE IN CONDUIT, NO. 62.5/125, MM12F 5M12F
683	FOOT	ELECTRIC CABLE IN CONDUIT, SIGNAL, NO. 14 3C
1767	FOOT	ELECTRIC CABLE IN CONDUIT, SIGNAL, NO. 14 5C
1815	FOOT	ELECTRIC CABLE IN CONDUIT, SIGNAL, NO. 14 7C
436	FOOT	ELECTRIC CABLE IN CONDUIT, SIGNAL, NO. 14 9C
296	FOOT	ELECTRIC CABLE IN CONDUIT, SIGNAL, NO. 14 12C
1056	FOOT	ELECTRIC CABLE IN CONDUIT, SIGNAL, NO. 18, 3C
25	FOOT	ELECTRIC CABLE IN CONDUIT, SERVICE, NO. 6 3C
742	FOOT	ELECTRIC CABLE IN CONDUIT, EQUIPMENT GROUNDING CONDUCTOR, NO. 6 1C
4	EACH	TRAFFIC SIGNAL POST, ALUMINUM, 16 FT.

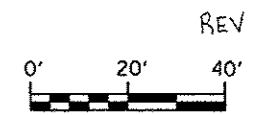
QUANTITY	UNIT	ITEM
1	EACH	REMOVE EXISTING TRAFFIC SIGNAL EQUIPMENT
7*	EACH	REMOVE EXISTING HANDHOLE
2*	EACH	REMOVE EXISTING DOUBLE HANDHOLE
8*	EACH	REMOVE EXISTING CONCRETE FOUNDATION
1624*	FOOT	REMOVE ELECTIC CABLE FROM CONDUIT
4	EACH	CAMERA MOUNTING ASSEMBLY
1	EACH	VIDEO VEHICLE DETECTION SYSTEM
1	EACH	TWIN TENON, STEEL

* SOME QUANTITIES LOCATED AT WABASH AND HAPPY LANDING



QUANTITY	UNIT	ITEM
1	EACH	STEEL COMBINATION MAST ARM ASSEMBLY AND POLE, 50 FT.
1	EACH	STEEL COMBINATION MAST ARM ASSEMBLY AND POLE, 52 FT.
1	EACH	STEEL COMBINATION MAST ARM ASSEMBLY AND POLE, 56 FT.
1	EACH	STEEL COMBINATION MAST ARM ASSEMBLY AND POLE, 60 FT.
12	FOOT	CONCRETE FOUNDATION, TYPE A
3.5	FOOT	CONCRETE FOUNDATION, TYPE C
38.5	FOOT	CONCRETE FOUNDATION, TYPE E, 36-INCH DIAMETER
47	FOOT	CONCRETE FOUNDATION, TYPE E, 42-INCH DIAMETER
6	EACH	SIGNAL HEAD, POLYCARBONATE, LED, 1-FACE, 3-SECTION, MAST ARM MOUNTED
4	EACH	SIGNAL HEAD, POLYCARBONATE, LED, 1-FACE, 4-SECTION, MAST ARM MOUNTED
2	EACH	SIGNAL HEAD, LED, POLYCARBONATE, 3-FACE, 1-4 SECTION, 2-5 SECTION, BRACKET MOUNTED
2	EACH	SIGNAL HEAD, LED, POLYCARBONATE, 3-FACE, 1-3 SECTION, 1-4 SECTION, 1-5 SECTION, BRACKET MOUNTED
4	EACH	PEDESTRIAN SIGNAL HEAD, POLYCARBONATE, LED, 2-FACE, BRACKET MOUNTED WITH COUNTDOWN TIMER
22	EACH	TRAFFIC SIGNAL BACKPLATE
8	EACH	PEDESTRIAN PUSH-BUTTON
1	EACH	TEMPORARY TRAFFIC SIGNAL INSTALLATION

NOTE: ALL COMBINATION MAST ARMS SHALL HAVE 15' ARMS ON THE LUMINAIRES WITH FULL CUTOFF.



USER NAME = sparkgr PLOT SCALE = 1/8" = 10'-0" (1/8" = 10'-0") PLOT DATE = Feb-04-2014 01:45:44PM	DESIGNED - DRAWN - BDM CHECKED - JSA DATE - 7/15/09	REVISED - WCD 10/17/2013 REVISED - REVISED - REVISED -	STATE OF ILLINOIS DEPARTMENT OF TRANSPORTATION	PROPOSED TRAFFIC SIGNAL PLAN WABASH AVE. & MERCANTILE DR.	F.A.I. R.I.E. 8012 SECTION 21(K)-3, TS-1, RS-7 COUNTY SANGAMON TOTAL SHEETS 679 SHEET NO. 359 CONTRACT NO. 72890
---	--	---	---	--	---