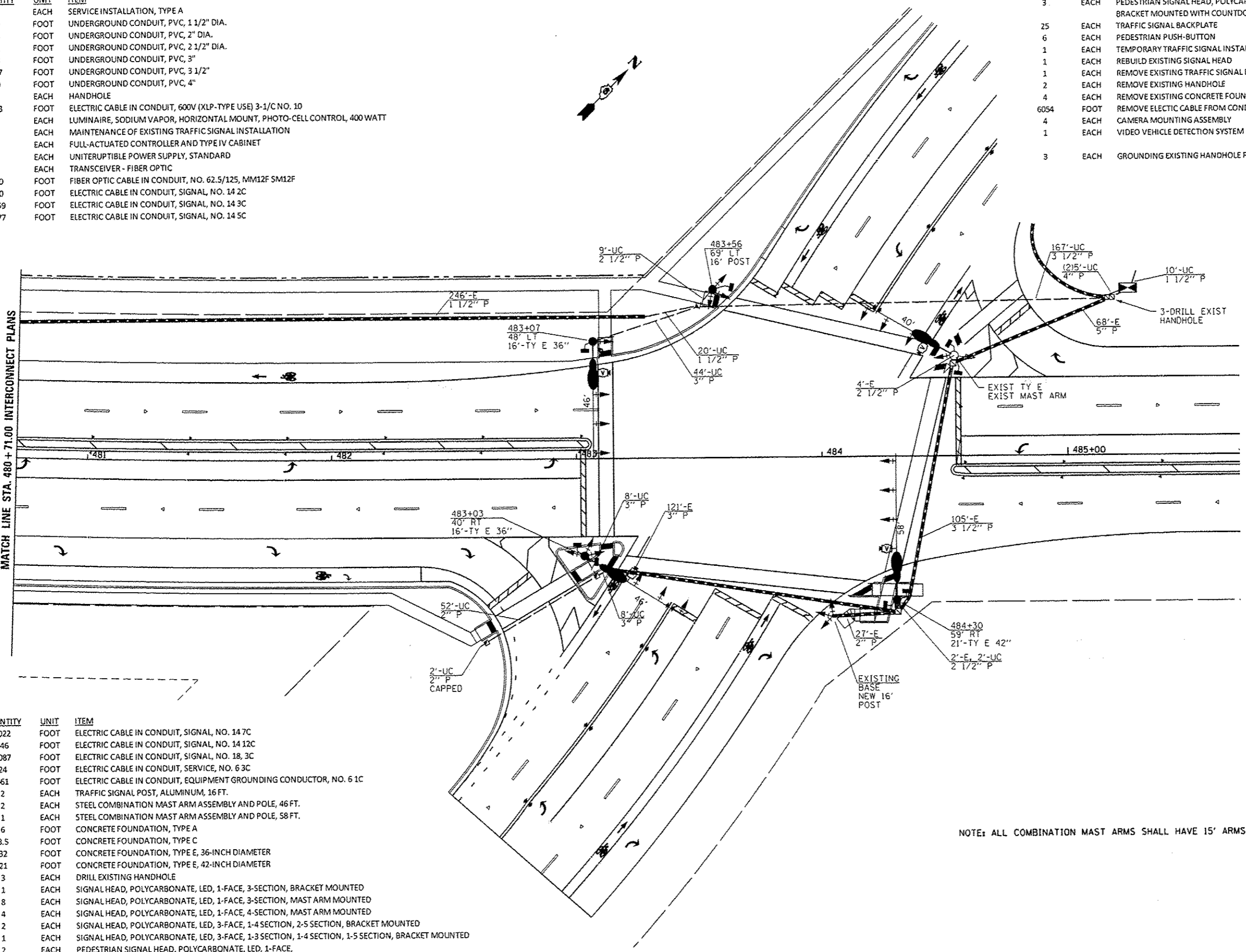


QUANTITY	UNIT	ITEM
1	EACH	SERVICE INSTALLATION, TYPE A
30	FOOT	UNDERGROUND CONDUIT, PVC, 1 1/2" DIA.
54	FOOT	UNDERGROUND CONDUIT, PVC, 2" DIA.
11	FOOT	UNDERGROUND CONDUIT, PVC, 2 1/2" DIA.
58	FOOT	UNDERGROUND CONDUIT, PVC, 3"
167	FOOT	UNDERGROUND CONDUIT, PVC, 3 1/2"
10	FOOT	UNDERGROUND CONDUIT, PVC, 4"
2	EACH	HANDHOLE
933	FOOT	ELECTRIC CABLE IN CONDUIT, 600V (XLP-TYPE USE) 3-1/C NO. 10
4	EACH	LUMINAIRE, SODIUM VAPOR, HORIZONTAL MOUNT, PHOTO-CELL CONTROL, 400 WATT
1	EACH	MAINTENANCE OF EXISTING TRAFFIC SIGNAL INSTALLATION
1	EACH	FULL-ACTUATED CONTROLLER AND TYPE IV CABINET
1	EACH	UNINTERUPTIBLE POWER SUPPLY, STANDARD
1	EACH	TRANSCEIVER - FIBER OPTIC
910	FOOT	FIBER OPTIC CABLE IN CONDUIT, NO. 62.5/125, MM12F SM12F
460	FOOT	ELECTRIC CABLE IN CONDUIT, SIGNAL, NO. 14 2C
1059	FOOT	ELECTRIC CABLE IN CONDUIT, SIGNAL, NO. 14 3C
1977	FOOT	ELECTRIC CABLE IN CONDUIT, SIGNAL, NO. 14 5C

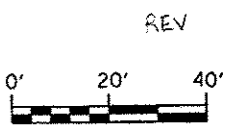
QUANTITY	UNIT	ITEM
3	EACH	PEDESTRIAN SIGNAL HEAD, POLYCARBONATE, LED, 2-FACE, BRACKET MOUNTED WITH COUNTDOWN TIMER
25	EACH	TRAFFIC SIGNAL BACKPLATE
6	EACH	PEDESTRIAN PUSH-BUTTON
1	EACH	TEMPORARY TRAFFIC SIGNAL INSTALLATION
1	EACH	REBUILD EXISTING SIGNAL HEAD
1	EACH	REMOVE EXISTING TRAFFIC SIGNAL EQUIPMENT
2	EACH	REMOVE EXISTING HANDHOLE
4	EACH	REMOVE EXISTING CONCRETE FOUNDATION
6054	FOOT	REMOVE ELECTIC CABLE FROM CONDUIT
4	EACH	CAMERA MOUNTING ASSEMBLY
1	EACH	VIDEO VEHICLE DETECTION SYSTEM
3	EACH	GROUNDING EXISTING HANDHOLE FRAME AND COVER

MATCH LINE STA. 480 + 71.00 INTERCONNECT PLANS



QUANTITY	UNIT	ITEM
2022	FOOT	ELECTRIC CABLE IN CONDUIT, SIGNAL, NO. 14 7C
846	FOOT	ELECTRIC CABLE IN CONDUIT, SIGNAL, NO. 14 12C
1087	FOOT	ELECTRIC CABLE IN CONDUIT, SIGNAL, NO. 18, 3C
24	FOOT	ELECTRIC CABLE IN CONDUIT, SERVICE, NO. 6 3C
661	FOOT	ELECTRIC CABLE IN CONDUIT, EQUIPMENT GROUNDING CONDUCTOR, NO. 6 1C
2	EACH	TRAFFIC SIGNAL POST, ALUMINUM, 16 FT.
2	EACH	STEEL COMBINATION MAST ARM ASSEMBLY AND POLE, 46 FT.
1	EACH	STEEL COMBINATION MAST ARM ASSEMBLY AND POLE, 58 FT.
6	FOOT	CONCRETE FOUNDATION, TYPE A
3.5	FOOT	CONCRETE FOUNDATION, TYPE C
32	FOOT	CONCRETE FOUNDATION, TYPE E, 36-INCH DIAMETER
21	FOOT	CONCRETE FOUNDATION, TYPE E, 42-INCH DIAMETER
3	EACH	DRILL EXISTING HANDHOLE
1	EACH	SIGNAL HEAD, POLYCARBONATE, LED, 1-FACE, 3-SECTION, BRACKET MOUNTED
8	EACH	SIGNAL HEAD, POLYCARBONATE, LED, 1-FACE, 3-SECTION, MAST ARM MOUNTED
4	EACH	SIGNAL HEAD, POLYCARBONATE, LED, 1-FACE, 4-SECTION, MAST ARM MOUNTED
2	EACH	SIGNAL HEAD, POLYCARBONATE, LED, 3-FACE, 1-4 SECTION, 2-5 SECTION, BRACKET MOUNTED
1	EACH	SIGNAL HEAD, POLYCARBONATE, LED, 3-FACE, 1-3 SECTION, 1-4 SECTION, 1-5 SECTION, BRACKET MOUNTED
2	EACH	PEDESTRIAN SIGNAL HEAD, POLYCARBONATE, LED, 1-FACE, BRACKET MOUNTED WITH COUNTDOWN TIMER

NOTE: ALL COMBINATION MAST ARMS SHALL HAVE 15' ARMS ON THE LUMINAIRES WITH FULL CUTOFF.



USER NAME = sparkgr	DESIGNED -	REVISED - WCD 10/17/2013
PLOT SCALE = 40.0000' / 1" =	DRAWN - BDM	REVISED -
PLOT DATE = Feb-04-2014 09:45:55PM	CHECKED - JSA	REVISED -
	DATE - 7/15/09	REVISED -

STATE OF ILLINOIS
DEPARTMENT OF TRANSPORTATION

PROPOSED TRAFFIC SIGNAL PLAN
WABASH AVE. & KOKE MILL RD.

SCALE: SHEET NO. 29 OF 37 SHEETS STA. TO STA.

F.A.U. RTE.	SECTION	COUNTY	TOTAL SHEETS	SHEET NO.
8012	21(W-3, TS-1, RS-7)	SANGAMON	679	364
CONTRACT NO. 72890				
ILLINOIS FED. AID PROJECT				