

STATE OF ILLINOIS  
DEPARTMENT OF TRANSPORTATION  
DIVISION OF HIGHWAYS

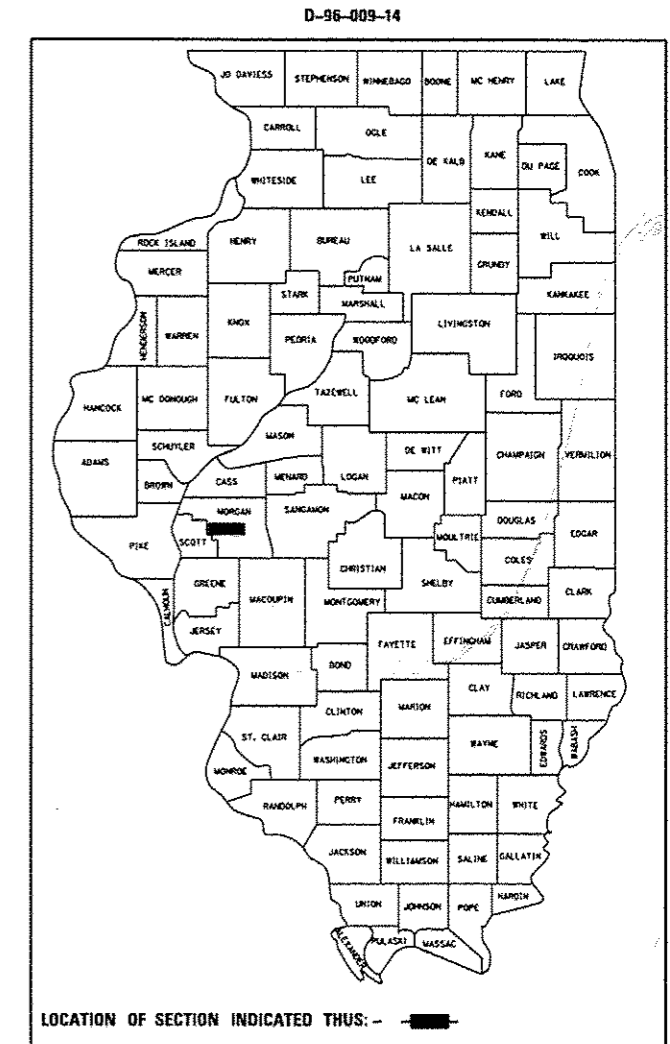
# PROPOSED CONTRACT MAINTENANCE

FOR INDEX OF SHEETS, SEE SHEET NO. 2

FAS 1610 (OLD US 36)  
(22) 1-2  
PROJECT CAPE SEAL  
MORGAN COUNTY

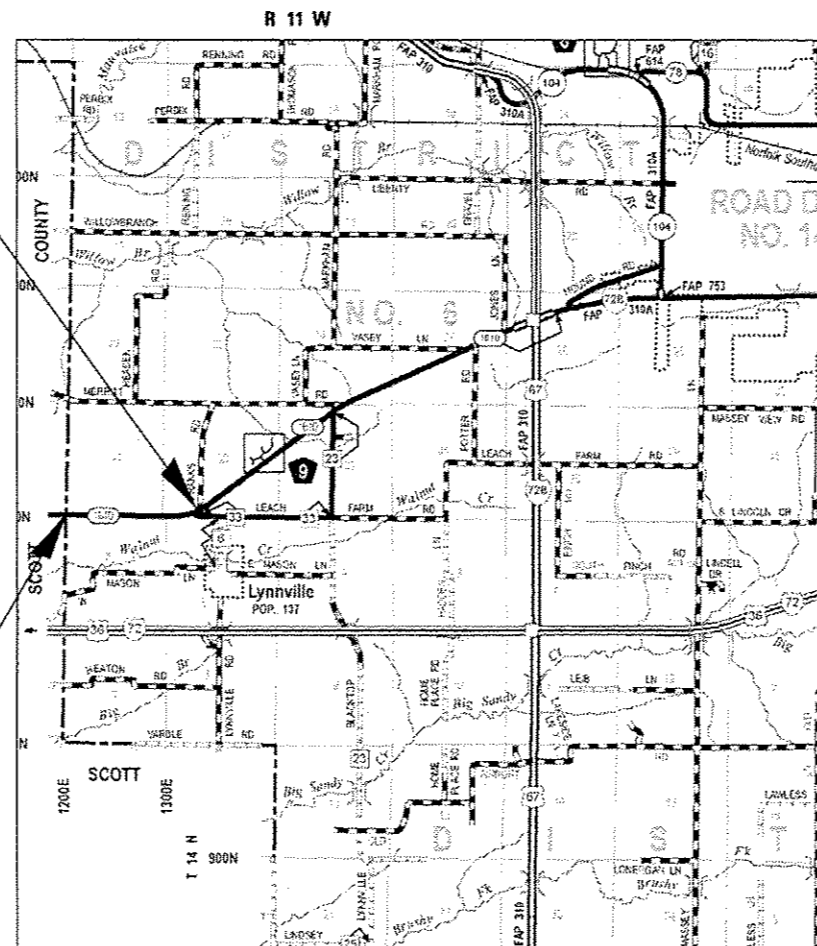
C-96-009-14

F.A.S. RTE.	SECTION	COUNTY	TOTAL SHEETS	SHEET NO.
1610	(22) 1-2	MORGAN	5	1
FED. ROAD DIST. NO.	ILLINOIS	CONTRACT NO. 72G45		

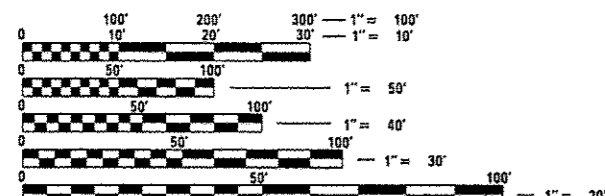


BEGIN PROJECT  
STA. 33 + 00

END PROJECT  
STA. 82 + 10



ADT = 2,500  
SU = 155  
MU = 70



FULL SIZE PLANS HAVE BEEN PREPARED USING STANDARD ENGINEERING SCALES. REDUCED SIZED PLANS WILL NOT CONFORM TO STANDARD SCALES. IN MAKING MEASUREMENTS ON REDUCED PLANS, THE ABOVE SCALES MAY BE USED.

J.U.L.I.E.  
JOINT UTILITY LOCATION INFORMATION FOR EXCAVATION  
1-800-892-0123  
OR 811

PLAN AND CONTRACT TECHNICIAN  
TIMOTHY SHARP (217)782-7743

CONTRACT NO. 72G45

NET LENGTH = 4,910.00 FT. = 0.930 MILES

STATE OF ILLINOIS  
DEPARTMENT OF TRANSPORTATION  
DIVISION OF HIGHWAYS

SUBMITTED February 13, 2014  
Roger Z. Orndorff  
DEPUTY DIRECTOR OF HIGHWAYS, REGION ENGINEER

March 21, 2014  
John D. Baramzelli, P.E.  
ENGINEER OF DESIGN AND ENVIRONMENT

March 21, 2014  
Omer Osman, P.E.  
DIRECTOR OF HIGHWAYS, CHIEF ENGINEER

PRINTED BY THE AUTHORITY  
OF THE STATE OF ILLINOIS