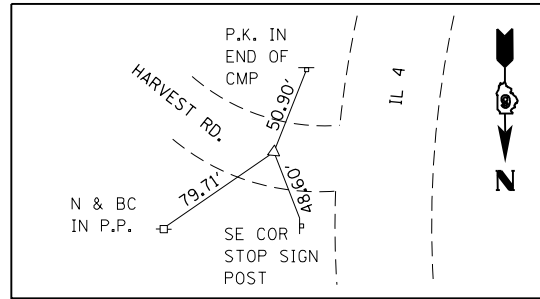
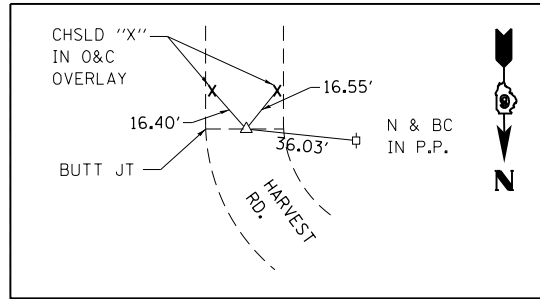


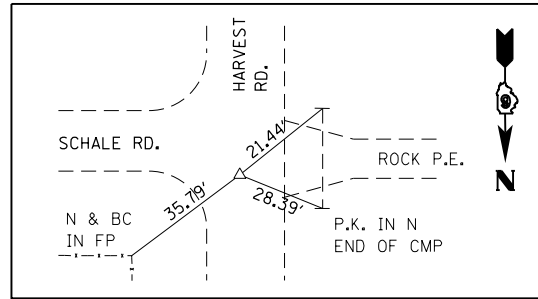
STA. 587+96.75 (IL 4) = STA. 2111+46.47 (HARVEST RD.)  
(P.K. NAIL)



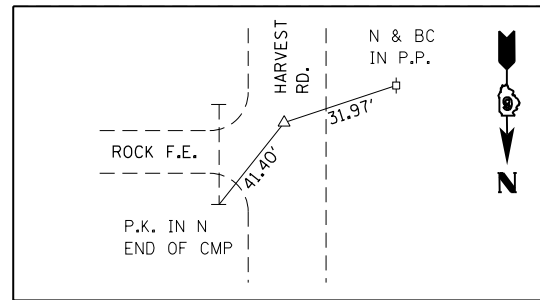
P.C. STA. 2112+42.12  
(P.K. NAIL)



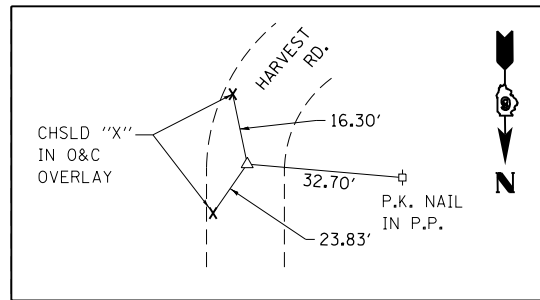
P.T. STA. 2114+60.10  
(P.K. NAIL)



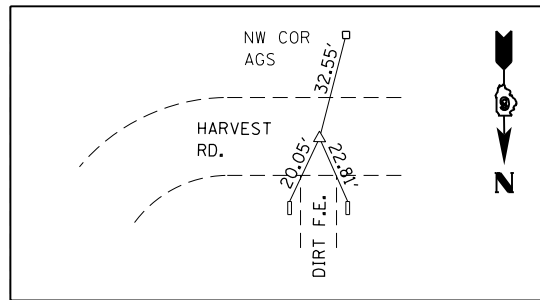
P.I. STA. 2120+11.28  
(STAR DRILL)



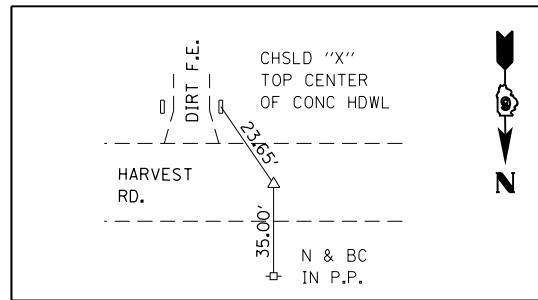
(STA EON): STA. 2137+36.81 (AH) = 2136+51.01 (BK)  
(CONC. NAIL)



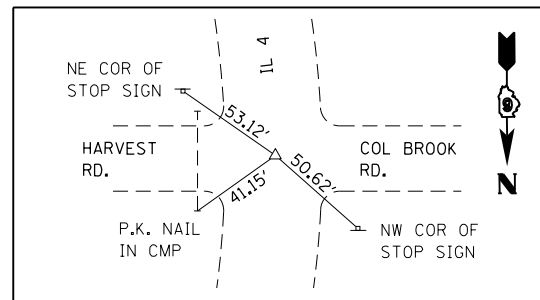
P.C. STA. 2145+23.82  
(STAR DRILL)



P.T. STA. 2148+49.19  
(P.K. NAIL)



P.I. STA. 2160+00.00  
(STAR DRILL)



STA. 632+47.21 (IL 4) = STA. 2172+70.75 (HARVEST RD.)  
(P.K. NAIL)

FILE NAME =	USER NAME = sparksgw	DESIGNED -	REVISED -
c:\pw\work\p\dot\sparksgw\10366942\0672065-sh-t-ATB.dgn		DRAWN -	REVISED -
Default	PLOT SCALE = 100.0000' / in.	CHECKED -	REVISED -
	PLOT DATE = Feb-19-2014 02:38:05PM	DATE -	REVISED -

**STATE OF ILLINOIS  
DEPARTMENT OF TRANSPORTATION**

**ALIGNMENT TIES & BENCHMARKS**

SCALE: NTS SHEET 1 OF 1 SHEETS STA. 2111+46.47 TO STA. 2172+70.75

S.B.I. RTE.	SECTION	COUNTY	TOTAL SHEETS	SHEET NO.
4D	D6 DE MISC 2014-1	MACOUPIN	16	9
CONTRACT NO. 72G65			ILLINOIS FED. AID PROJECT	