

STATE OF ILLINOIS
DEPARTMENT OF TRANSPORTATION
DIVISION OF HIGHWAYS

**PROPOSED
HIGHWAY PLANS**

S.B.I. ROUTE 4D (HARVEST RD)
SECTION D6 DE MISC 2014-1

(DE-MISC) SEAL COAT
MACOUPIN COUNTY

C-96-035-14

S.B.I. RTE.	SECTION	COUNTY	TOTAL SHEETS	SHEET NO.
4D	D6 DE MISC 2014-1	MACOUPIN	18	1
		ILLINOIS	CONTRACT NO. 72G65	

D-96-035-14

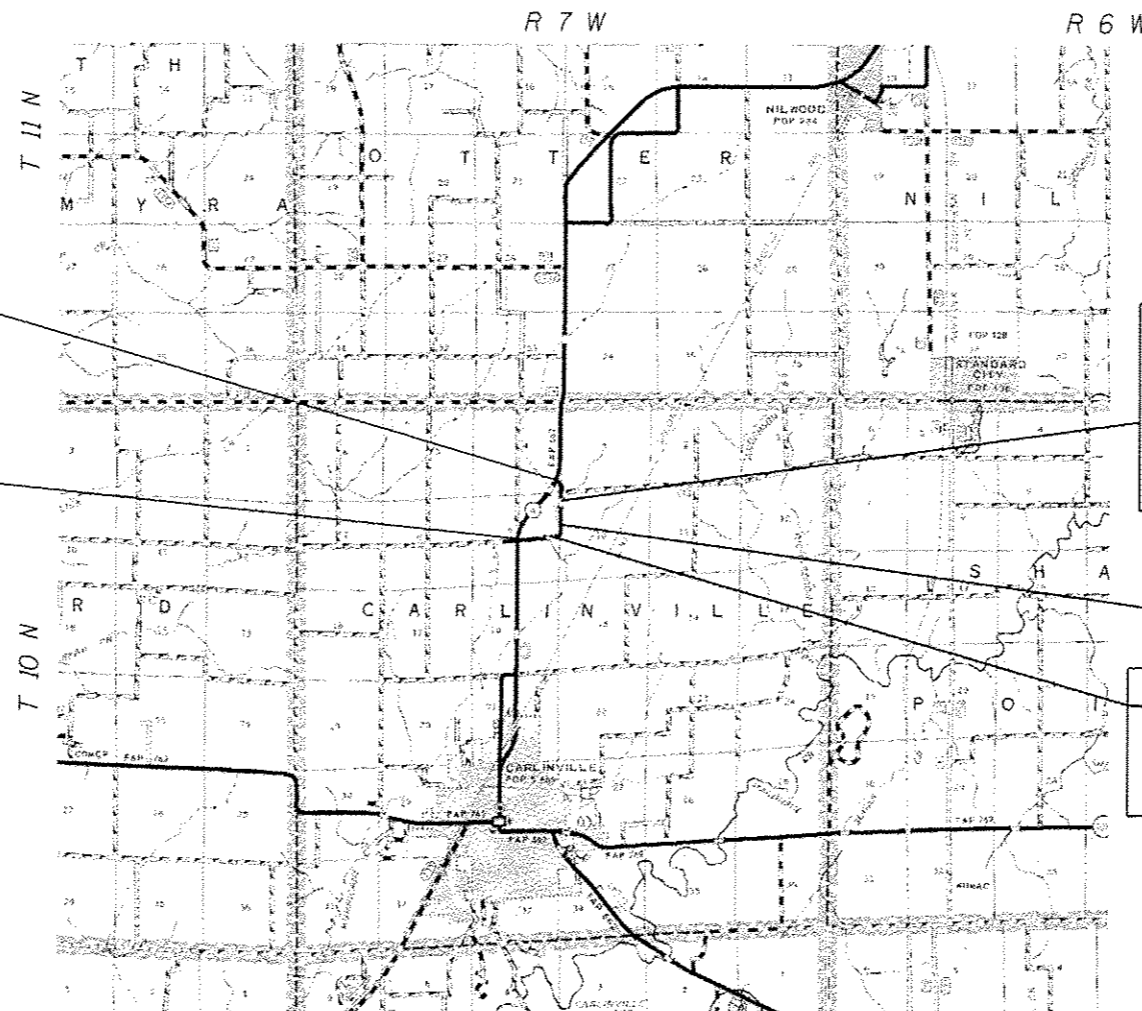


FOR INDEX OF SHEETS, SEE SHEET NO. 2

HIGHWAY CLASSIFICATION

S.B.I. ROUTE 4D (HARVEST RD)
CLASSIFICATION: LOCAL

ADT: 50 (2012) PV = 98.0%
ADT: 67 (2032) SU = 2.0%
DESIGN SPEED: 60 MPH MU = 0.0%
POSTED SPEED: 55 MPH



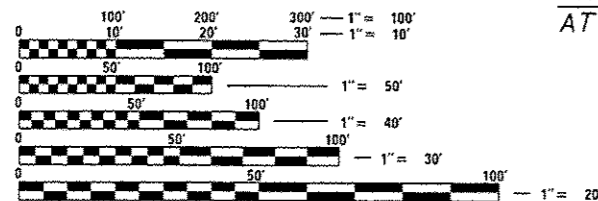
PROJECT BEGINS
AT STA. 2111+60.05

PROJECT ENDS
AT STA. 2172+59.03

PAVEMENT OMISSION:
STA 2124+75.00 TO
STA 2127+60.00
SN: 059-2503 (Exist.)
Dbl 8'x6' Box Culv
over Hurricane Creek

STA EON:
Sta 2136+51.01 (Bk)
Sta 2137+36.86 (Ah)

BRIDGE OMISSION:
STA 2151+58.50 TO
STA 2151+91.52
SN: 059-0031 (Exist.)



FULL SIZE PLANS HAVE BEEN PREPARED USING STANDARD ENGINEERING SCALES. REDUCED SIZED PLANS WILL NOT CONFORM TO STANDARD SCALES. IN MAKING MEASUREMENTS ON REDUCED PLANS, THE ABOVE SCALES MAY BE USED.

J.U.L.I.E.
JOINT UTILITY LOCATION INFORMATION FOR EXCAVATION
1-800-892-0123
OR 811

SENIOR TEAM ENGINEER: MARK DUST (217) 785-0597
TEAM ENGINEER: RENE CABRERA (217) 557-9062

CONTRACT NO. 72G65

GROSS LENGTH = 6,013.13 FT. = 1.14 MILE
NET LENGTH = 5,695.11 FT. = 1.07 MILE

STATE OF ILLINOIS
DEPARTMENT OF TRANSPORTATION
DIVISION OF HIGHWAYS

SUBMITTED Feb. 19 20 14
Roy D. Diskin
DEPUTY DIRECTOR OF HIGHWAYS, REGION ENGINEER

March 21 20 14
John D. Baranzelli, P.E., Jr.
ENGINEER OF DESIGN AND ENVIRONMENT

March 21 20 14
Omer Osman, P.E., Jr.
DIRECTOR OF HIGHWAYS, CHIEF ENGINEER

PRINTED BY THE AUTHORITY
OF THE STATE OF ILLINOIS

GENERAL NOTES

GENERAL NOTES

- ① WHERE SECTION OR SUBSECTION MONUMENTS ARE ENCOUNTERED, THE ENGINEER SHALL BE NOTIFIED BEFORE SUCH MONUMENTS ARE REMOVED. THE CONTRACTOR SHALL PROTECT AND CAREFULLY PRESERVE ALL PROPERTY MARKS AND MONUMENTS UNTIL THE OWNER, AND AUTHORIZED SURVEYOR OR AGENT HAS WITNESSES OR OTHERWISE REFERENCED THEIR LOCATION.
- ② THE NOMINAL THICKNESS FOR BASE AND SURFACE COURSES ARE SHOWN ON THE TYPICAL SECTIONS, STANDARDS, SCHEDULES, OR SPECIAL DETAILS. THE CONSTRUCTED THICKNESS OF THE ABOVE ITEM SHALL NOT BE LESS THAN 90 PERCENT OF THE NOMINAL THICKNESS AT ANY LOCATION.
- ③ ANY REFERENCE TO A STANDARD IN THE PLANS SHALL BE INTERPRETED TO MEAN THE EDITION, AS INDICATED BY THE SUB-NUMBER LISTED IN THE INDEX OF SHEETS.
- ④ THE CONTRACTOR SHALL BE RESPONSIBLE FOR PROTECTING UTILITY PROPERTY FROM CONSTRUCTION OPERATIONS AS OUTLINED IN ARTICLE 107.31 OF THE STANDARD SPECIFICATIONS. THE JULIE NUMBER IS 800-892-0123. A MINIMUM OF FORTY-EIGHT HOURS ADVANCED NOTICE IS REQUIRED. ANY DAMAGE TO THE UNDERGROUND FACILITIES CAUSED BY THE CONTRACTOR SHALL BE REPAIRED TO THE SATISFACTION OF THE DEPARTMENT AT THE CONTRACTOR'S EXPENSE, INCLUDING TEMPORARY REPAIRS WHICH MAY BE REQUIRED TO KEEP THE FACILITY OPERATIONAL WHILE MATERIAL IS BEING OBTAINED TO MAKE PERMANENT REPAIRS.
- ⑤ THE LOCATIONS OF THOSE BURIED AND ABOVEGROUND UTILITIES SHOWN ARE APPROXIMATE, ARE SHOWN FOR CONTRACTOR INFORMATIONAL USE ONLY, AND ARE NOT TO BE REFERENCED FOR CONSTRUCTION PURPOSES. THE IMPLIED PRESENCE OR ABSENCE OF UTILITIES IS NOT TO BE CONSTRUED BY THE OWNER, ENGINEER, CONTRACTOR OR SUBCONTRACTORS TO BE AN ACCURATE AND COMPLETE REPRESENTATION OF UTILITIES THAT MAY OR MAY NOT EXIST ON THE CONSTRUCTION SITE. BURIED AND ABOVE GROUND UTILITY LOCATIONS, IDENTIFICATION, AND MARKING ARE THE SOLE RESPONSIBILITY OF THE CONTRACTOR, REROUTING, DISCONNECTION, PROTECTION, ...ETC OF ANY UTILITIES MUST BE COORDINATED BETWEEN CONTRACTOR, UTILITY COMPANY, AND OWNER. SITE SAFETY, INCLUDING THE AVOIDANCE OF HAZARDOUS ASSOCIATED WITH BURIED AND ABOVE GROUND UTILITIES REMAIN THE SOLE RESPONSIBILITY OF THE CONTRACTOR.
- ⑥ IN ADDITION TO FIELD AND AERIAL SURVEYS, PLAN DIMENSIONS AND DETAILS RELATIVE TO THE EXISTING FACILITIES HAVE BEEN TAKEN FROM EXISTING PLANS AND ARE SUBJECT TO CONSTRUCTION VARIATIONS. IT SHALL BE THE CONTRACTOR'S RESPONSIBILITY TO VERIFY SUCH DIMENSIONS AND DETAILS IN THE FIELD. SUCH VARIATIONS SHALL NOT BE A CAUSE FOR ADDITIONAL COMPENSATION DUE TO A CHANGE IN THE SCOPE OF WORK. HOWEVER, THE CONTRACTOR WILL BE PAID FOR THE QUANTITY ACTUALLY FURNISHED AT THE UNIT PRICE BID FOR THE WORK.
- ⑦ COVER COAT AGGREGATE AND SEAL COAT AGGREGATE SHALL BE CRUSHED LIMESTONE.
- ⑧ SHORT-TERM PAVEMENT MARKINGS MUST BE PAINT. TAPE WILL NOT BE ALLOWED.
- ⑨ PERMANENT PAVEMENT MARKINGS SHALL NOT BE APPLIED UNTIL 10 DAYS AFTER THE SEAL COAT AGGREGATE HAS BEEN APPLIED.
- ⑩ ADDITIONAL BROOMING (UP TO 4 TIMES) SHALL BE REQUIRED AT THE DISCRETION OF THE ENGINEER, INCLUDING THE DAY OF PERMANENT PAVEMENT MARKING.
- ⑪ THE DISTRICT BUREAU OF OPERATIONS SHALL BE NOTIFIED AT LEAST 14 DAYS PRIOR TO PLACMENT OF FINAL PAVEMENT MARKINGS. PHONE (217) 782-7314
- ⑫ THE FOLLOWING MIXTURE REQUIREMENTS ARE APPLICABLE:

LOCATION(S):	SBI 4D (HARVEST RD)
MIXTURE USE(S):	INCIDENTAL HMA
PG:	PG 64-22
DESIGN AIR Voids:	4.0% @ N50
MIXTURE COMPOSITION: (Gradation Mixture)	IL 9.5
FRICTION AGGREGATE:	MIX "C"
QUALITY MANAGEMENT:	OC/OA

RATES OF APPLICATION TABLES

THE FOLLOWING RATES OF APPLICATION HAVE BEEN ASSUMED IN CALCULATING PLAN QUANTITIES.

BITUMINOUS MATERIALS (COVERS & SEAL COATS):	0.001425 TON / SQ YD
BITUMINOUS MATERIALS (PRIME COAT):	0.001425 TON / SQ YD (ON AGGR)
COVER COAT AGGREGATE	0.01 TON / SQ YD
SEAL COAT AGGREGATE	0.01 TON / SQ YD
AGGREGATE MATERIALS	2.05 TON / CU YD

COMMITMENTS

THE RESIDENT ENGINEER SHALL CONTACT STUDIES AND PLANS CONCERNING ANY MAJOR PLAN CHANGE TO MAKE SURE NO PREVIOUS COMMITMENTS (NOT LISTED) WERE MADE AFFECTING THE DESIGN AND ALLOW AN IMPROVED DESIGN FOR FUTURE PROJECTS.

STANDARDS

000001-06	STANDARD SYMBOLS, ABBREVIATIONS, AND PATTERNS
701201-04	LANE CLOSURE 2L, 2W, DAY ONLY, FOR SPEEDS ≥ 45 MPH
701901-03	TRAFFIC CONTROL DEVICES
780001-04	TYPICAL PAVEMENT MARKING
BLR 21-9	TYPICAL APPLICATION OF TRAFFIC CONTROL DEVICES FOR CONSTRUCTION ON RURAL LOCAL HIGHWAYS
BLR 22-7	TYPICAL APPLICATION OF TRAFFIC CONTROL DEVICES FOR CONSTRUCTION ON RURAL LOCAL HIGHWAYS (TWO-LANE TWO WAY RURAL TRAFFIC) (ROAD CLOSED TO THRU TRAFFIC)

INDEX OF SHEETS

1	COVER SHEET
2	INDEX OF SHEETS, LISTS OF STANDARDS, GENERAL NOTES AND COMMITMENTS
3	SUMMARY OF QUANTITIES
4 - 6	SCHEDULE OF QUANTITIES (3)
7 - 8	TYPICAL SECTIONS (2)
9	ALIGNMENT TIES & BENCHMARKS
10	ROAD CLOSURE DETAIL
11 - 16	PLAN SHEETS (6)
17 - 18	ENTRANCE AND SIDE ROAD DETAILS (2)

DISTRICT SIX	
EXAMINED <u>February 11</u> 20 <u>14</u>	
<u>Michael P. ... for Bill Burger</u>	
OPERATIONS ENGINEER	
EXAMINED <u>FEBRUARY 10</u> 20 <u>14</u>	
<u>Jim ...</u>	
PROJECT IMPLEMENTATION ENGINEER	
EXAMINED <u>Feb. 13</u> 20 <u>14</u>	
<u>DRMLJ</u>	
PROGRAM DEVELOPMENT ENGINEER	

FILE NAME *	USER NAME * cobarera	DESIGNED - JWC	REVISED -	STATE OF ILLINOIS DEPARTMENT OF TRANSPORTATION	INDEX OF SHEETS & GENERAL NOTES	S.B.I. RTE.	SECTION	COUNTY	TOTAL SHEETS	SHEET NO.	
c:\pwwork\psidot\cobarera\0366942\06	Z065-shi-gennote.dgn	DRAWN - JWC	REVISED -			40	06 DE MISC 2014-1	MACOUPIN	18	2	
	PLOT SCALE * 157.7061' / dm	CHECKED - RSC	REVISED -			CONTRACT NO. 72065					
	PLOT DATE * Feb-19-2014 08:23:08AM	DATE -	REVISED -			ILLINOIS FED. AID PROJECT					

015 02 14

CODE NO.	ITEM	UNIT	TOTAL QUANTITY	CONSTR. CODE
				100% STATE
				ROADWAY
				0005
				RURAL
35100300	AGGREGATE BASE COURSE, TYPE A 4"	SQ YD	11,135	11,135
35800100	PREPARATION OF BASE	SQ YD	90	90
35800200	AGGREGATE BASE REPAIR	TON	19	19
40200800	AGGREGATE SURFACE COURSE, TYPE B	TON	136	136
40300200	BITUMINOUS MATERIALS (PRIME COAT)	TON	16	16
40300405	POLYMERIZED BITUMINOUS MATERIALS (COVERS AND SEAL COATS)	TON	49	49
40300500	COVER COAT AGGREGATE	TON	226	226
40300600	SEAL COAT AGGREGATE	TON	113	113
40600982	HOT-MIX ASPHALT SURFACE REMOVAL- BUTT JOINT	SQ YD	1,013	1,013
40800050	INCIDENTAL HOT-MIX ASPHALT SURFACING	TON	139	139
48102100	AGGREGATE WEDGE SHOULDERS, TYPE B	TON	675	675
67100100	MOBILIZATION	L SUM	1	1
70100450	TRAFFIC CONTROL AND PROTECTION, STANDARD 701201	L SUM	1	1
70101830	TRAFFIC CONTROL AND PROTECTION, STANDARD BLR 21	L SUM	1	1
70101835	TRAFFIC CONTROL AND PROTECTION, STANDARD BLR 22	L SUM	1	1
70300100	SHORT-TERM PAVEMENT MARKING	FOOT	518	518
* 78001120	PAINT PAVEMENT MARKING - LINE 5"	FOOT	1,504	1,504

* 17 * SPECIALTY ITEM

FILE NAME : c:\p\work\p\idat\sparksg\100366942\0672065-shs-500.dgn	USER NAME : sparksg	DESIGNED -	REVISD -	STATE OF ILLINOIS DEPARTMENT OF TRANSPORTATION	SUMMARY OF QUANTITIES				S.B.I. RTE.	SECTION	COUNTY	TOTAL SHEETS	SHEET NO.
PLOT SCALE * 100.0000 ' / in.	CHECKED -	REVISD -	REVISD -						40	D6 DE MISC 2014-1	MACOUPIN	18	3
Default	PLOT DATE * Feb-19-2014 02:36:43PM	DATE -	REVISD -		SCALE:	SHEET 1 OF 1 SHEETS	STA.	TO STA.	CONTRACT NO. 72065				
ILLINOIS FED. AID PROJECT													

SCHEDULE OF QUANTITIES

A-3 SURFACE TREATMENT SCHEDULE

LOCATION	SEAL COAT	COVER COAT	P BIT MATLS	BIT MATLS
	AGGR. (TON)	AGGR. (TON)	C&S CT (TON)	PR CT (TON)
[S. B. I. 4D (HARVEST RD.)]				
STA. 2111+90.05 TO STA. 2113+50.00	3.73	7.46	1.59	0.53
STA. 2113+50.00 TO STA. 2114+60.10	2.26	4.52	0.96	0.32
STA. 2114+60.10 TO STA. 2124+35.00	17.33	34.66	7.41	2.47
(O&C Side Rd) - Sta 2120+00.93 LT	0.63	1.26	0.09	0.09
(PAVEMENT OMISSION):				
STA. 2124+75.00 TO STA. 2127+60.00				
STA. 2128+00.00 TO STA. 2136+51.01	15.13	30.26	6.48	2.16
STA. 2128+90.00 TO STA. 2136+51.01	13.53	27.06	5.79	1.93
(STA EQN):				
STA 2136+51.01 (BK) = STA 2137+36.86 (AH)				
STA. 2137+36.86 TO STA. 2151+18.50	24.56	49.12	10.50	3.50
(BRIDGE OMISSION):				
STA. 2151+58.50 TO STA. 2151+91.52				
STA. 2152+31.52 TO STA. 2170+52.67	32.38	64.76	13.83	4.61
STA. 2170+52.67 TO STA. 2171+39.03	1.68	3.36	0.72	0.24
STA. 2171+39.03 TO STA. 2172+29.03	1.90	3.80	0.81	0.27
PROJECT TOTAL	113	226	49	16

AGGREGATE BASE COURSE, TYPE A 4''

LOCATION	QUANTITY (SQ YD)
[S. B. I. 4D (HARVEST RD.)]	
STA. 2112+00.05 TO STA. 2113+50.00	349.88
STA. 2113+50.00 TO STA. 2114+60.10	226.32
STA. 2114+60.10 TO STA. 2124+25.00	1,715.38
(PAVEMENT OMISSION):	
STA. 2124+75.00 TO STA. 2127+60.00	
STA. 2128+10.00 TO STA. 2136+51.01	1,495.13
STA. 2128+90.00 TO STA. 2136+51.01	1,352.91
(STA EQN):	
STA 2136+51.01 (BK) = STA 2137+36.86 (AH)	
STA. 2137+36.86 TO STA. 2151+08.50	2,438.47
(BRIDGE OMISSION):	
STA. 2151+58.50 TO STA. 2151+91.52	
STA. 2152+41.52 TO STA. 2170+52.67	3,219.82
STA. 2170+52.67 TO STA. 2171+39.03	167.92
STA. 2171+39.03 TO STA. 2172+19.03	168.89
PROJECT TOTAL	11,135

PAINT PAVEMENT MARKING - LINE 5''

LOCATION STATION TO STATION	LENGTH FOOT	YELLOW SKIP-DASH (FOOT)
[S. B. I. 4D (HARVEST RD.)]		
STA. 2111+60.06 TO STA. 2136+51.01	2,490.95	622.74
(STA EQN):		
STA 2136+51.01 (BK) = STA 2137+36.86 (AH)		
STA. 2137+36.86 TO STA. 2172+58.60	3,521.74	880.44
PROJECT TOTAL		1,504

SCHEDULE OF QUANTITIES

AGGREGATE SURFACE COURSE, TYPE B

TYPE	LOCATION	Thickness (5" to 1.5") (in)	W ₁ (FT)	W ₂ (FT)	L (FT)	QUANTITY (TON)
	[S. B. I. 4D (HARVEST RD.)]					
Aggr PE	STA. 2113+39.37 LT	3.25	14	25	15	6.01
Aggr FE	STA. 2116+36.35 LT	3.25	12	15	15	4.16
O&C Side Rd	STA. 2120+00.93 LT	3.25	25	50	15	11.57
Aggr PE	STA. 2120+05.71 RT	3.25	21	43	15	9.87
	(PAVEMENT OMISSION): STA. 2124+75.00 TO STA. 2127+60.00					
Aggr FE	STA. 2128+75.76 LT	3.25	28	49	15	11.88
Aggr PE mbt	STA. 2130+50.64 LT		665.99			
	(Landing): (Apron): Aggr FE STA. 2130+72.60 RT Aggr FE STA. 2136+30.85 LT	6 3.25	489.59 176.40			18.59 3.63 4.94 11.10
	(STA EQN): STA 2136+51.01 (BK) = STA 2137+38.86 (AH)					
Aggr Side Rd	STA. 2147+02.85 LT	3.25	55	90	15	22.36
Aggr FE	STA. 2148+54.10 RT	3.25	13	18	15	4.78
	(BRIDGE OMISSION): STA. 2151+58.50 TO STA. 2151+91.52					
Aggr PE	STA. 2158+67.39 RT	3.25	26	53	15	12.18
Aggr FE	STA. 2159+77.76 LT	3.25	259.87		15	5.34
Aggr FE	STA. 2166+09.57 LT	3.25	26	34	15	9.25
PROJECT TOTAL						136

HOT- MIX ASPHALT SURFACE
REMOVAL - BUTT JOINT

LOCATION	QUANTITY (SQ YD)
[S. B. I. 4D (HARVEST RD.)]	
STA. 2111+60.05 TO STA. 2112+00.05	184.73
STA. 2112+00.05 TO STA. 2112+80.05	186.67
STA. 2124+45.00 TO STA. 2124+75.00 (O&C Side Rd) - Sta 2120+00.93 LT	66.67 58.33
(PAVEMENT OMISSION): STA. 2124+75.00 TO STA. 2127+60.00	
STA. 2127+60.00 TO STA. 2127+90.00	66.67
(STA EQN): STA 2136+51.01 (BK) = STA 2137+36.86 (AH)	
STA. 2137+36.86 TO STA. 2151+08.50	53.33
(BRIDGE OMISSION): STA. 2151+58.50 TO STA. 2151+91.52	
STA. 2152+91.52 TO STA. 2152+21.52	53.33
STA. 2171+39.03 TO STA. 2172+19.03	168.89
STA. 2172+19.03 TO STA. 2172+59.03	173.78
PROJECT TOTAL	1,013

SCHEDULE OF QUANTITIES

INCIDENTAL HOT-MIX
ASPHALT SURFACING

LOCATION	QUANTITY (TON)
[S. B. I. 4D (HARVEST RD.)]	
STA. 2111+60.05 TO STA. 2112+00.05	41.38
STA. 2124+25.00 TO STA. 2124+45.00	6.97
STA. 2124+45.00 TO STA. 2124+75.00	8.40
(PAVEMENT OMISSION):	
STA. 2124+75.00 TO STA. 2127+60.00	
STA. 2127+60.00 TO STA. 2127+90.00	8.40
STA. 2127+90.00 TO STA. 2128+10.00	6.97
(STA EQN):	
STA 2136+51.01 (BK) = STA 2137+36.86 (AH)	
STA. 2151+08.50 TO STA. 2151+58.50	13.69
(BRIDGE OMISSION):	
STA. 2151+58.50 TO STA. 2151+91.52	
STA. 2151+91.52 TO STA. 2152+41.52	13.69
STA. 2172+19.03 TO STA. 2172+59.03	38.93
PROJECT TOTAL	139

AGGREGATE WEDGE
SHOULDERS, TYPE B

LOCATION	QUANTITY (TON)
[S. B. I. 4D (HARVEST RD.)]	
STA. 2111+60.06 TO STA. 2124+45.00	146.34
(PAVEMENT OMISSION):	
STA. 2124+75.00 TO STA. 2127+60.00	32.46
STA. 2127+90.00 TO STA. 2136+51.01	98.06
(STA EQN):	
STA 2136+51.01 (BK) = STA 2137+36.86 (AH)	
STA. 2137+36.86 TO STA. 2151+58.50	161.91
(BRIDGE OMISSION):	
STA. 2151+58.50 TO STA. 2151+91.52	
STA. 2151+91.52 TO STA. 2172+59.03	235.47
PROJECT TOTAL	675

(ESTIMATED QUANTITIES)
AGGREGATE BASE REPAIR

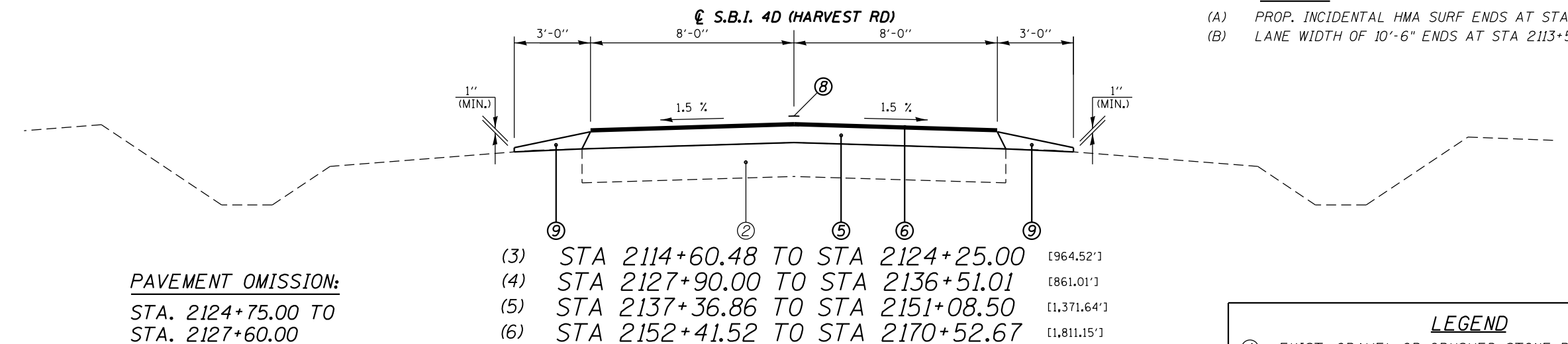
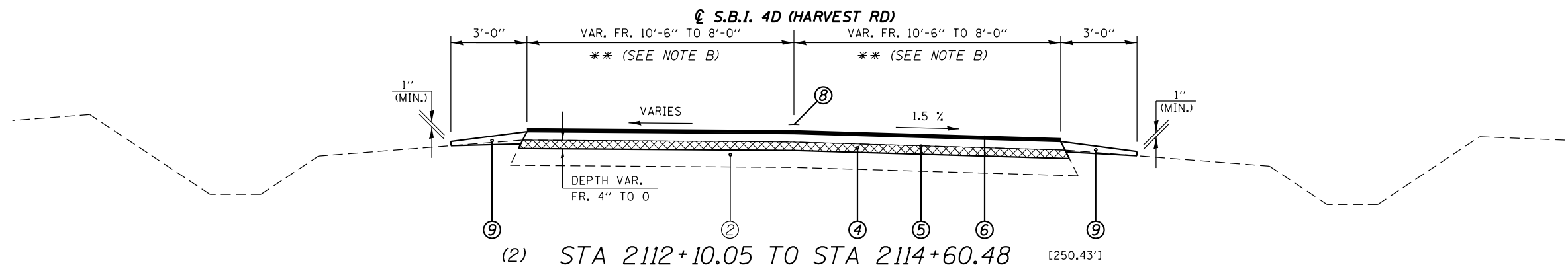
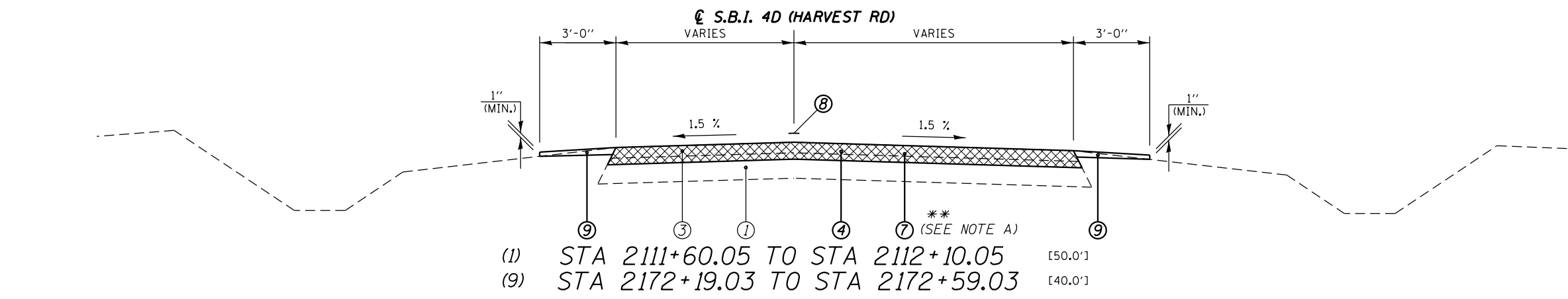
LOCATION (APPROX. 15% OF RDWY AREA)	QUANTITY (TON)
[S. B. I. 4D (HARVEST RD.)]	
STA. 2112+00.05 TO STA. 2112+80.05	9.57
STA. 2171+39.03 TO STA. 2172+19.03	8.66
PROJECT TOTAL	19

(ESTIMATED QUANTITIES)
PREPARATION OF BASE

LOCATION (APPROX. 15% OF RDWY AREA)	QUANTITY (SQ YD)
[S. B. I. 4D (HARVEST RD.)]	
STA. 2111+60.05 TO STA. 2112+00.05	27.71
STA. 2124+45.00 TO STA. 2124+75.00	10.00
(PAVEMENT OMISSION):	
STA. 2124+75.00 TO STA. 2127+60.00	
STA. 2127+60.00 TO STA. 2127+90.00	10.00
(STA EQN):	
STA 2136+51.01 (BK) = STA 2137+36.86 (AH)	
STA. 2151+28.50 TO STA. 2151+58.50	8.00
(BRIDGE OMISSION):	
STA. 2151+58.50 TO STA. 2151+91.52	
STA. 2152+91.52 TO STA. 2152+21.52	8.00
STA. 2172+19.03 TO STA. 2172+59.03	26.07
PROJECT TOTAL	90

SHORT-TERM PAVEMENT MARKING

LOCATION	QUANTITY (FOOT)
[S. B. I. 4D (HARVEST RD.)]	
STA. 2111+60.06 TO STA. 2124+75.00	119.54
(PAVEMENT OMISSION):	
STA. 2124+75.00 TO STA. 2127+60.00	
STA. 2127+60.00 TO STA. 2136+51.01	81.00
(STA EQN):	
STA 2136+51.01 (BK) = STA 2137+36.86 (AH)	
STA. 2137+36.86 TO STA. 2151+58.50	129.24
(BRIDGE OMISSION):	
STA. 2151+58.50 TO STA. 2151+91.52	
STA. 2151+91.52 TO STA. 2172+59.03	187.96
PROJECT TOTAL	518



**** NOTES:**

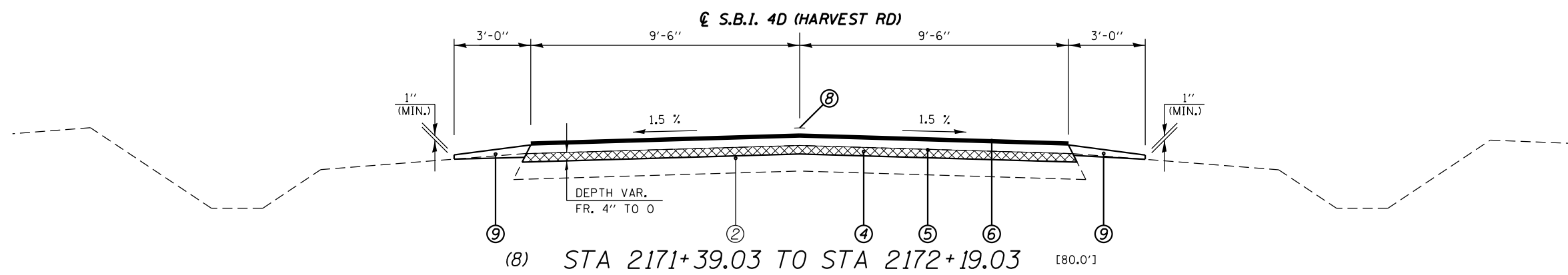
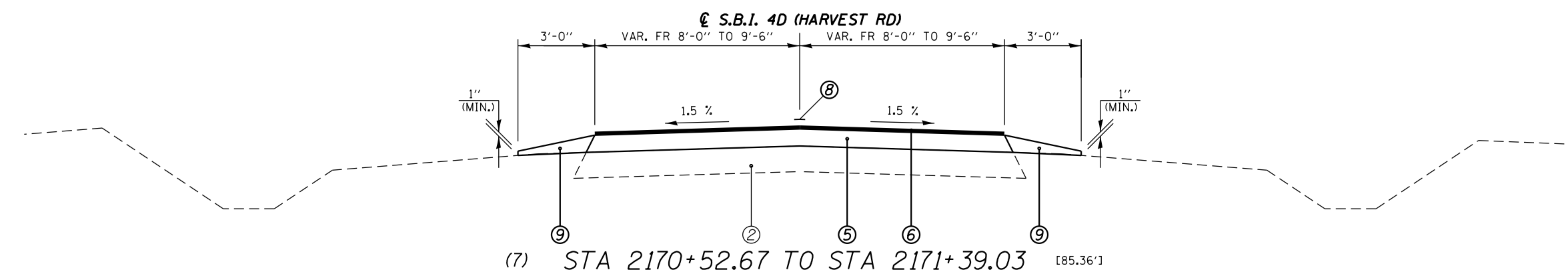
(A) PROP. INCIDENTAL HMA SURF ENDS AT STA. 2112+00.05

(B) LANE WIDTH OF 10'-6" ENDS AT STA 2113+50.00.

PAVEMENT OMISSION:
 STA. 2124+75.00 TO
 STA. 2127+60.00

BRIDGE OMISSION:
 SN: 059-0031
 STA. 2151+58.50 TO
 STA. 2151+91.52

- LEGEND**
- ① EXIST. GRAVEL OR CRUSHED STONE BASE COURSE, TYPE B
 - ② EXIST. 8" P.C.C. PAVEMENT
 - ③ EXIST. 2 1/2" HMA OVERLAY
 - ④ PROP. HOT-MIX ASPHALT SURFACE REMOVAL - BUTT JOINT
 - ⑤ PROP. AGGREGATE BASE COURSE, TYPE A 4"
 - ⑥ PROP. POLYMERIZED BITUMINOUS MATERIALS (COVERS AND SEAL COATS)
 - ⑦ PROP. INCIDENTAL HOT-MIX ASPHALT SURFACING
 - ⑧ PROP. PAINT PAVEMENT MARKING - LINE 5"
 - ⑨ PROP. AGGREGATE WEDGE SHOULDERS, TYPE B



- LEGEND**
- ① EXIST. GRAVEL OR CRUSHED STONE BASE COURSE, TYPE B
 - ② EXIST. 8" P.C.C. PAVEMENT
 - ③ EXIST. 2 1/2" HMA OVERLAY
 - ④ PROP. HOT-MIX ASPHALT SURFACE REMOVAL - BUTT JOINT
 - ⑤ PROP. AGGREGATE BASE COURSE, TYPE A 4"
 - ⑥ PROP. POLYMERIZED BITUMINOUS MATERIALS (COVERS AND SEAL COATS)
 - ⑦ PROP. INCIDENTAL HOT-MIX ASPHALT SURFACING
 - ⑧ PROP. PAINT PAVEMENT MARKING - LINE 5"
 - ⑨ PROP. AGGREGATE WEDGE SHOULDERS, TYPE B

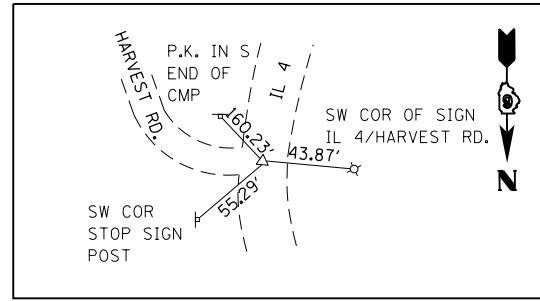
FILE NAME =	USER NAME = sparksgw	DESIGNED -	REVISED -
et:\pwork\pwork\sparksgw\0366942\0672665-sht-typicol.dgn		DRAWN -	REVISED -
	PLOT SCALE = 100.0000' / 1in.	CHECKED -	REVISED -
	PLOT DATE = Feb-19-2014 02:38:04PM	DATE -	REVISED -

**STATE OF ILLINOIS
DEPARTMENT OF TRANSPORTATION**

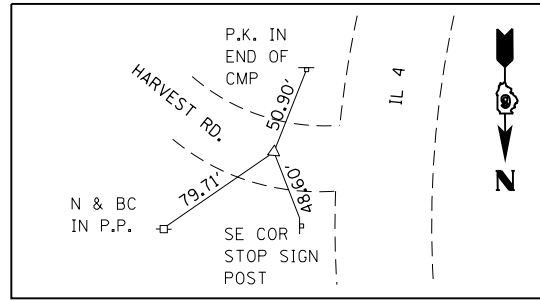
TYPICAL SECTIONS

SCALE: NTS SHEET NO. 2 OF 2 SHEETS STA. 2170+52.67 TO STA. 2172+19.03

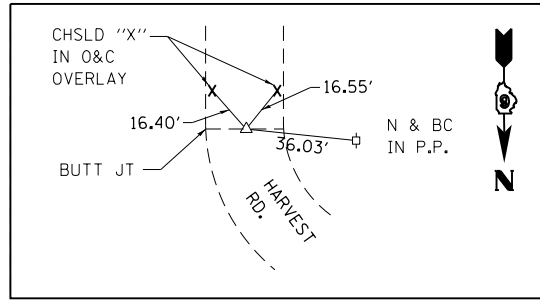
S.B.I. RTE.	SECTION	COUNTY	TOTAL SHEETS	SHEET NO.
4D	D6 DE MISC 2014-1	MACOUPIN	18	8
CONTRACT NO.			72G65	
ILLINOIS FED. AID PROJECT				



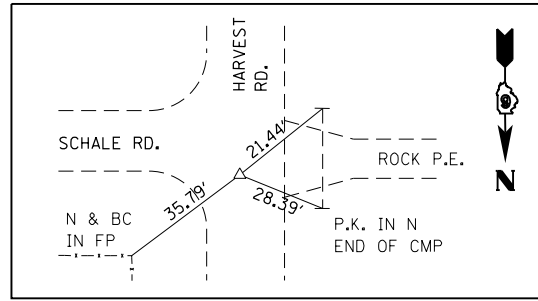
STA. 587+96.75 (IL 4) = STA. 2111+46.47 (HARVEST RD.)
(P.K. NAIL)



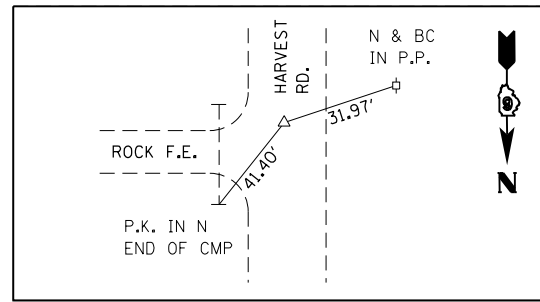
P.C. STA. 2112+42.12
(P.K. NAIL)



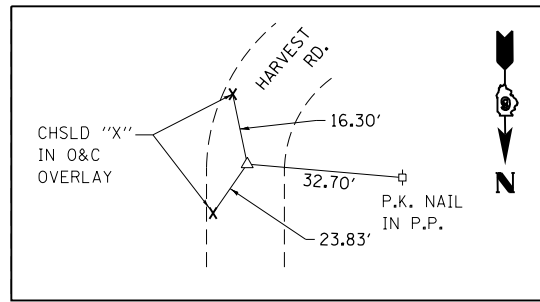
P.T. STA. 2114+60.10
(P.K. NAIL)



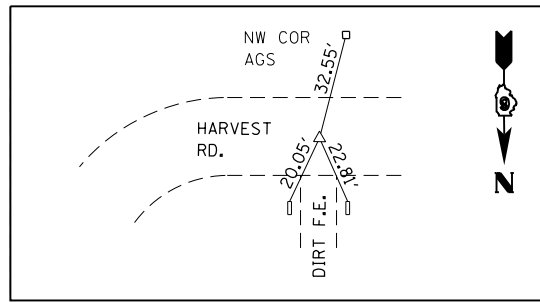
P.I. STA. 2120+11.28
(STAR DRILL)



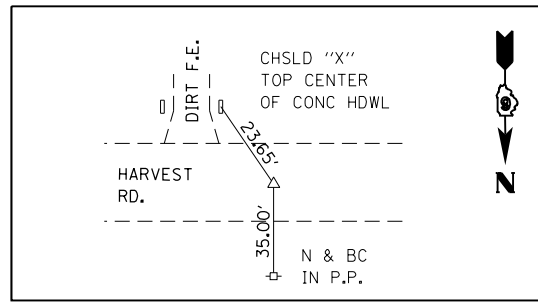
(STA EON): STA. 2137+36.81 (AH) = 2136+51.01 (BK)
(CONC. NAIL)



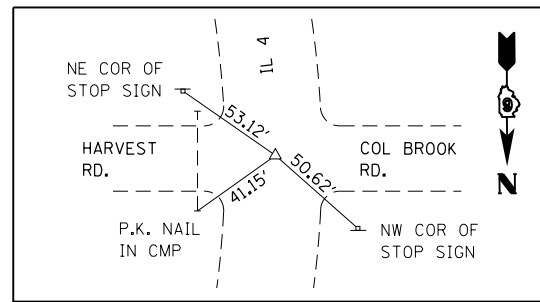
P.C. STA. 2145+23.82
(STAR DRILL)



P.T. STA. 2148+49.19
(P.K. NAIL)



P.I. STA. 2160+00.00
(STAR DRILL)



STA. 632+47.21 (IL 4) = STA. 2172+70.75 (HARVEST RD.)
(P.K. NAIL)

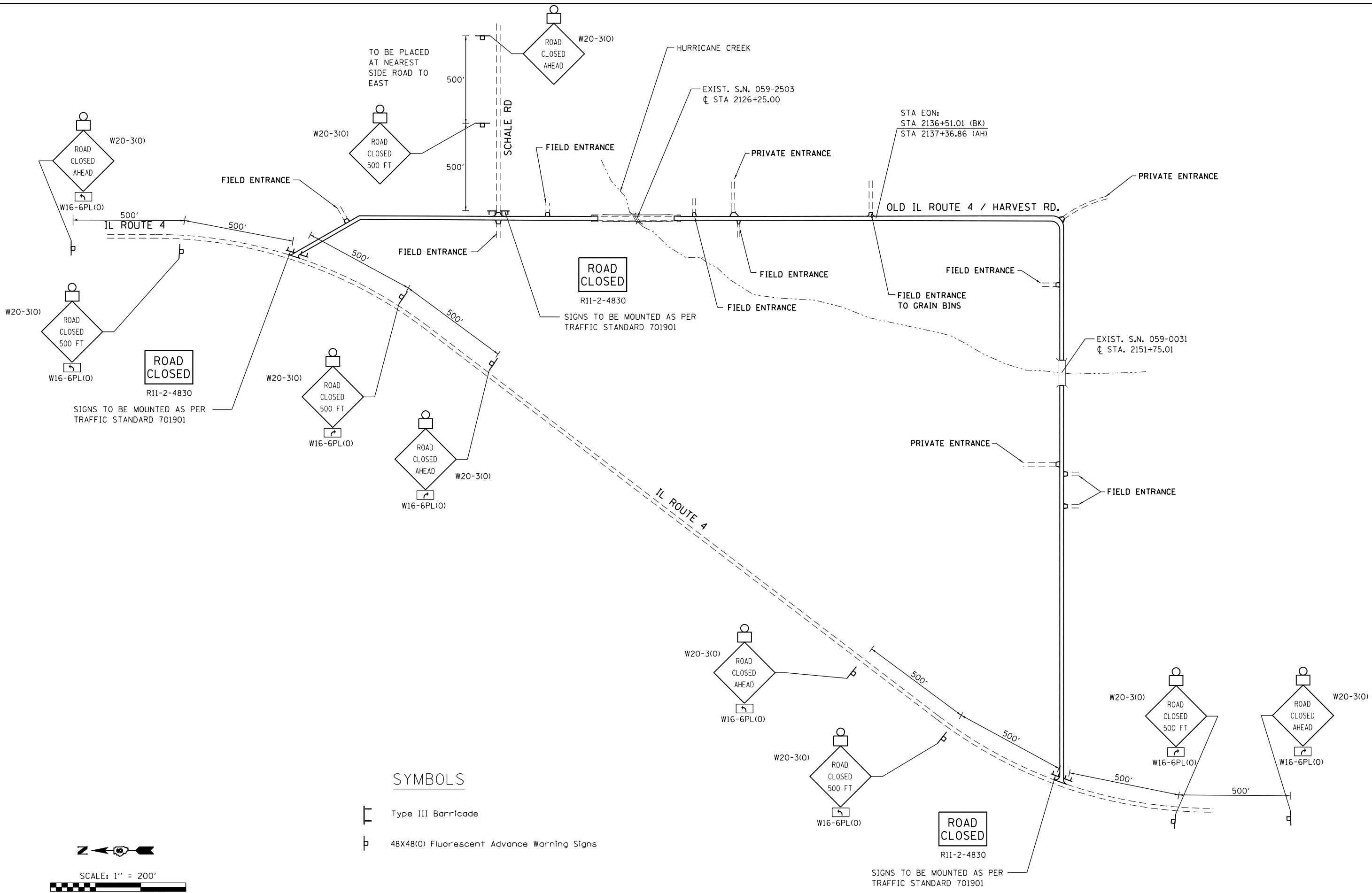
FILE NAME =	USER NAME = sparksgw	DESIGNED -	REVISED -
c:\pw\work\p\dot\sparksgw\10366942\0672065-sh-t-ATB.dgn		DRAWN -	REVISED -
Default	PLOT SCALE = 100.0000' / in.	CHECKED -	REVISED -
	PLOT DATE = Feb-19-2014 02:38:05PM	DATE -	REVISED -

**STATE OF ILLINOIS
DEPARTMENT OF TRANSPORTATION**


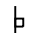
ALIGNMENT TIES & BENCHMARKS

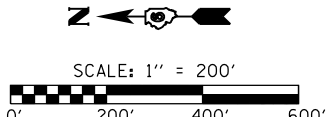
SCALE: NTS SHEET 1 OF 1 SHEETS STA. 2111+46.47 TO STA. 2172+70.75

S.B.I. RTE.	SECTION	COUNTY	TOTAL SHEETS	SHEET NO.
4D	D6 DE MISC 2014-1	MACOUPIN	16	9
CONTRACT NO. 72G65			ILLINOIS FED. AID PROJECT	



SYMBOLS

-  Type III Barricade
-  48X48(0) Fluorescent Advance Warning Signs



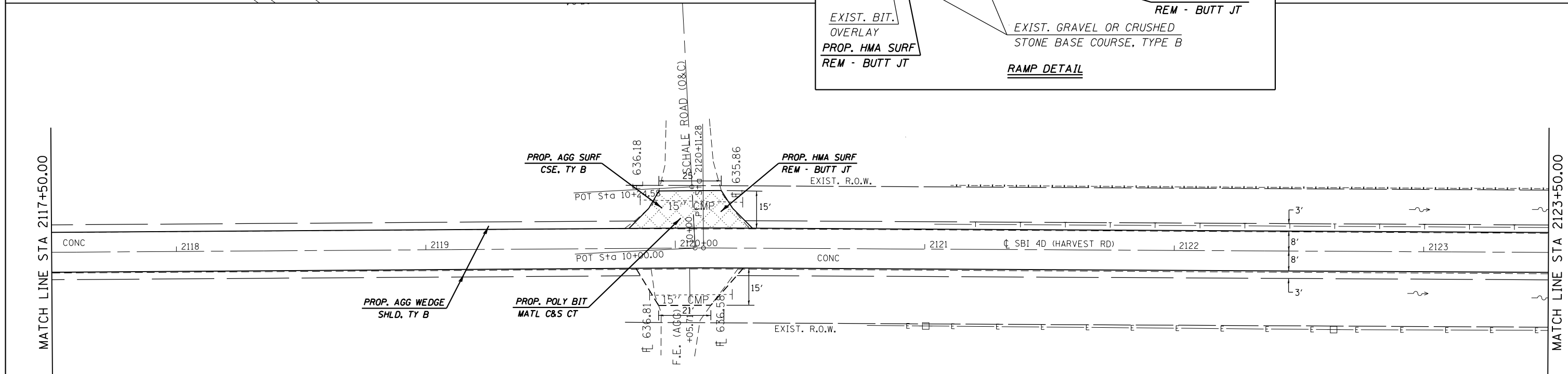
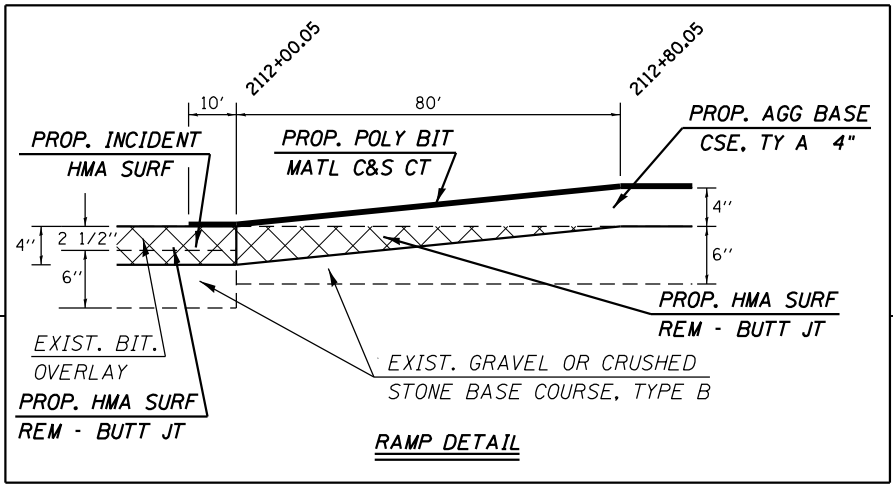
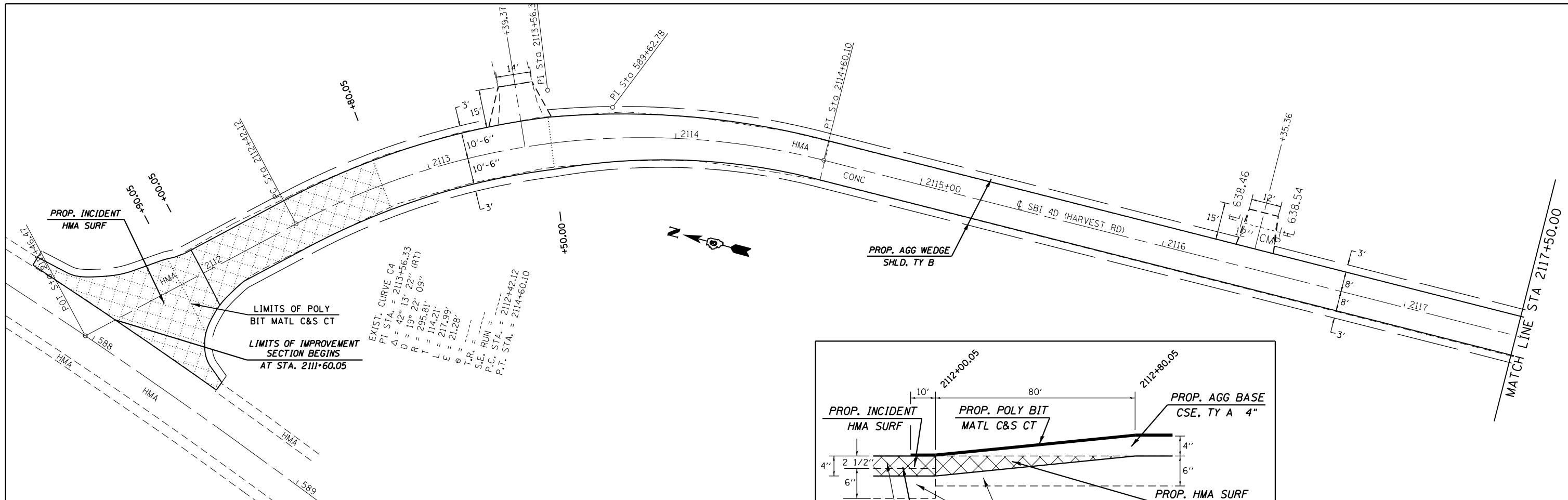
FILE NAME =	USER NAME = sparksgw	DESIGNED -	REVISED -
c:\pw\work\p\idot\sparksgw\10366942\0672065-sht-sign.dgn		DRAWN -	REVISED -
Default	PLOT SCALE = 100.0000' / in.	CHECKED -	REVISED -
	PLOT DATE = Feb-19-2014 02:38:06PM	DATE -	REVISED -

**STATE OF ILLINOIS
DEPARTMENT OF TRANSPORTATION**

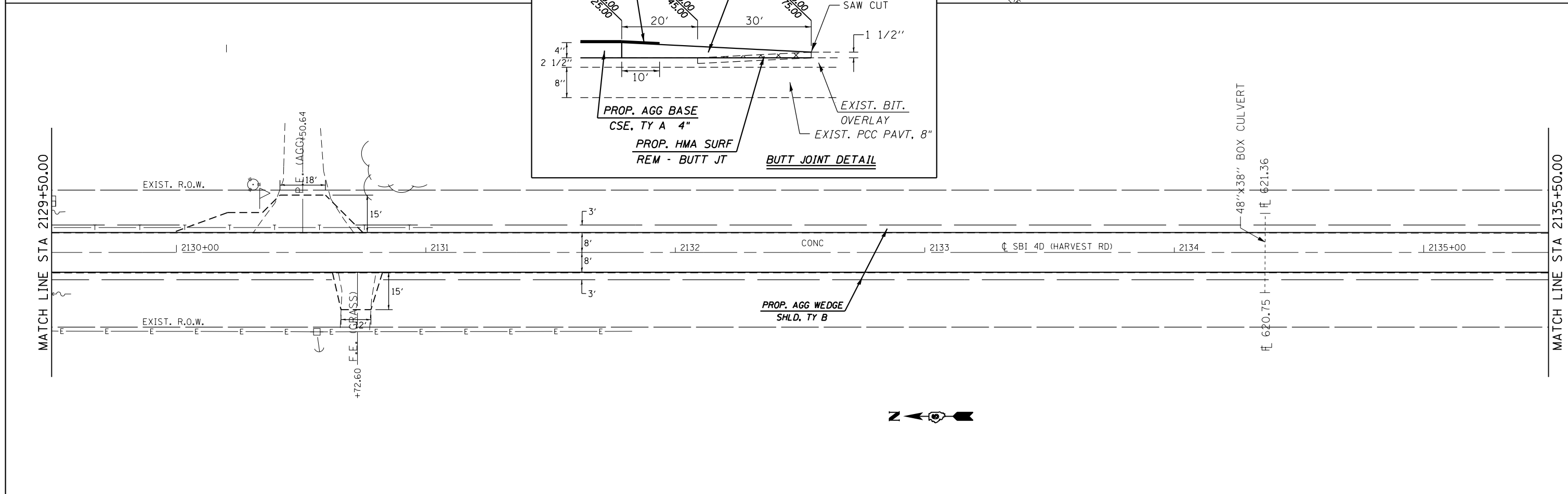
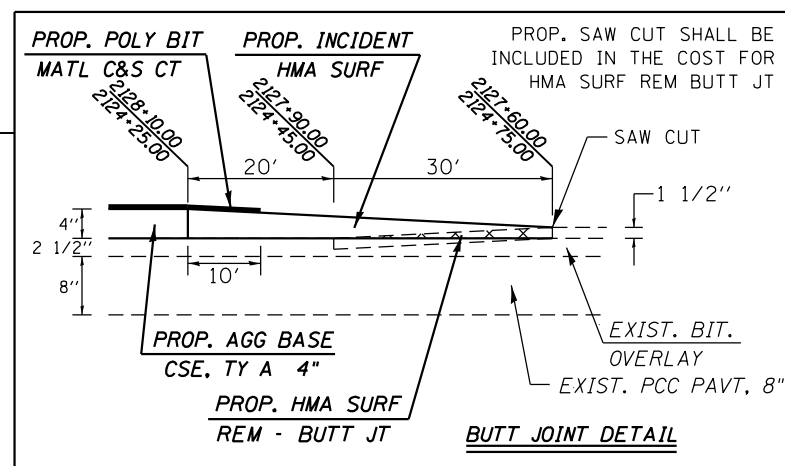
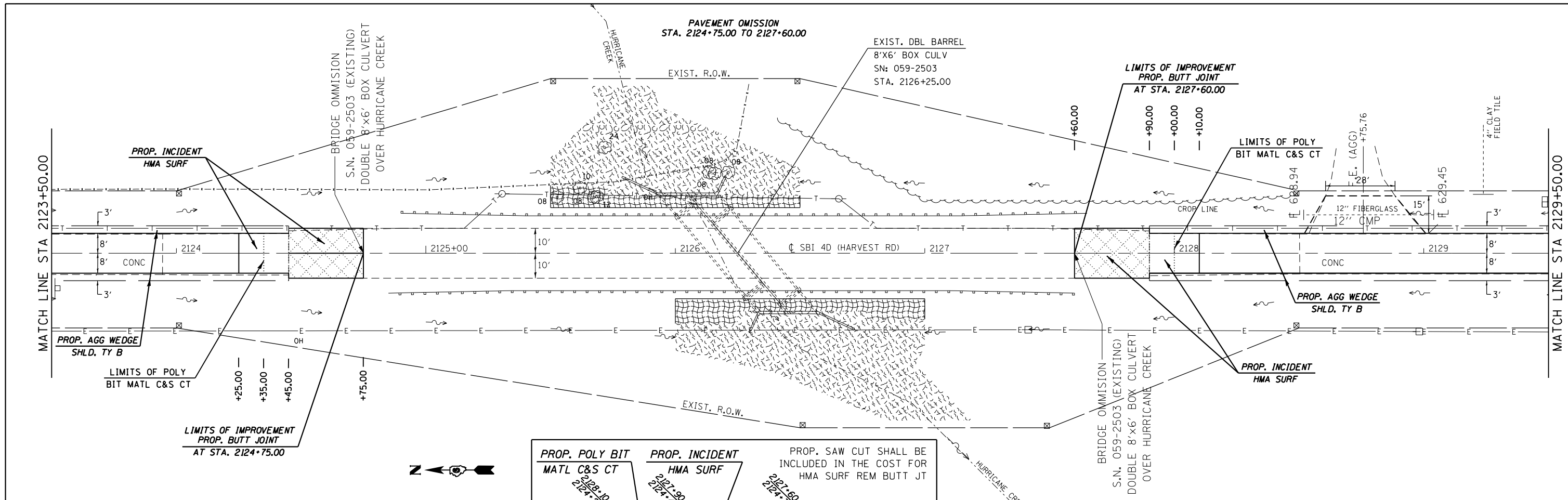
ROAD CLOSURE DETAIL

SCALE: SHEET 1 OF 1 SHEETS STA. TO STA.

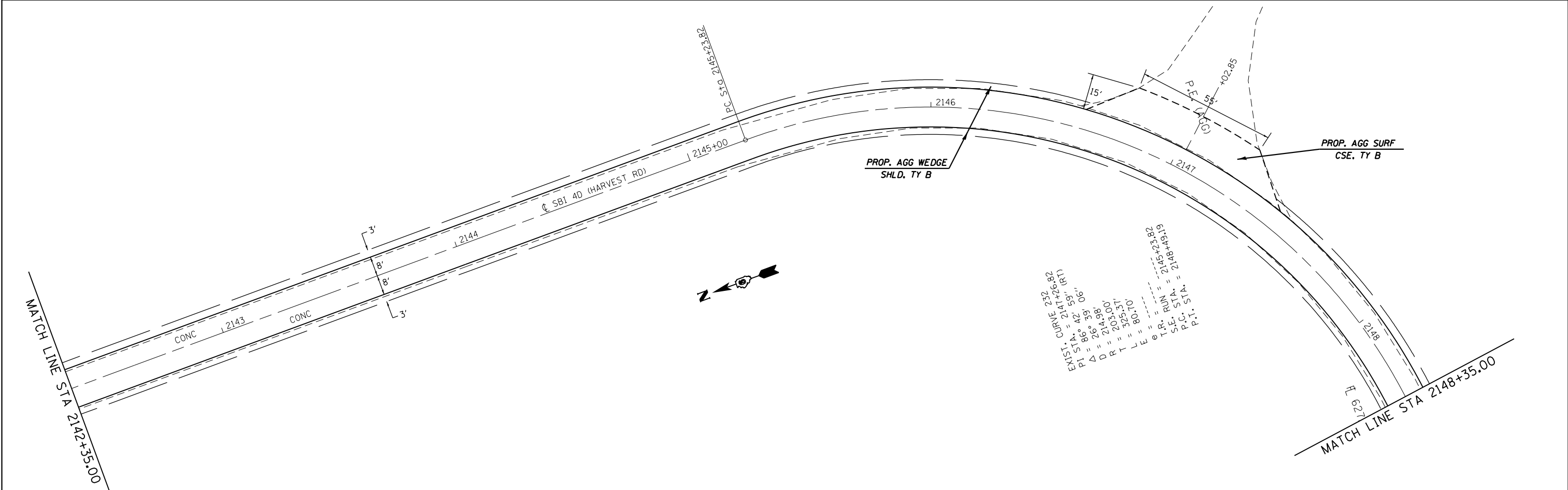
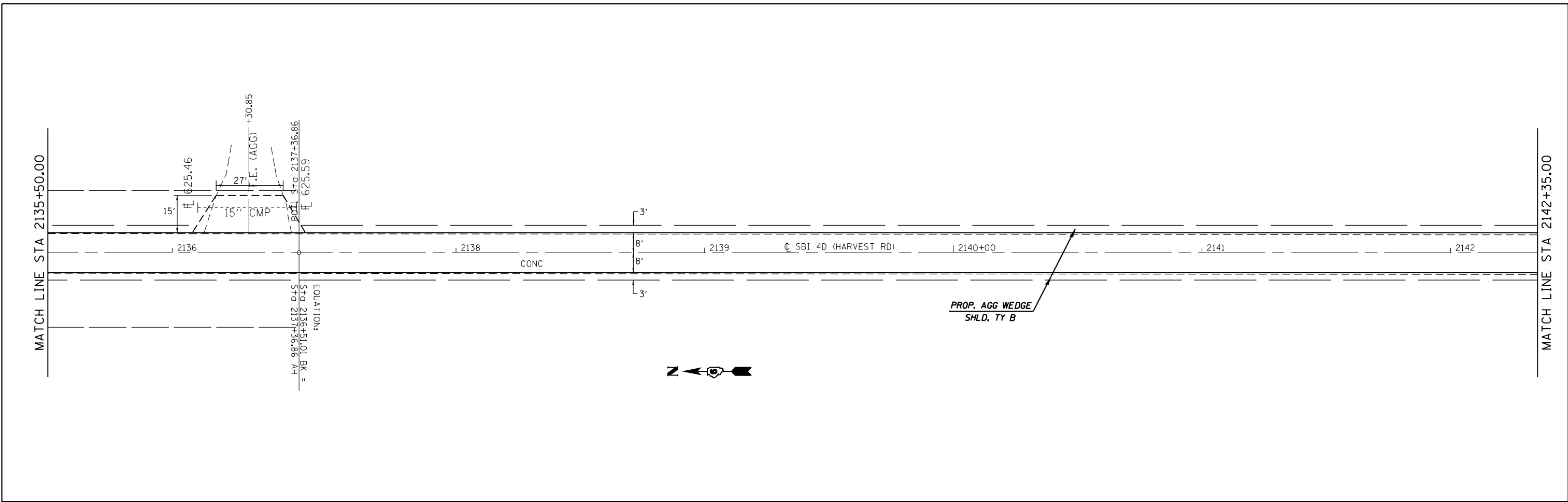
S.B.I. RTE.	SECTION	COUNTY	TOTAL SHEETS	SHEET NO.
4D	D6 DE MISC 2014-1	MACOUPIN	18	10
CONTRACT NO. 72G65				
ILLINOIS FED. AID PROJECT				



FILE NAME =	USER NAME = sparksgw	DESIGNED -	REVISED -	STATE OF ILLINOIS DEPARTMENT OF TRANSPORTATION	PLAN SHEETS		S.B.I. RTE.	SECTION	COUNTY	TOTAL SHEETS	SHEET NO.
ci:\pw\work\p\idot\sparksgw\0366942\067065-sht-plan203.dgn	PLOT SCALE = 40.0000' / in.	DRAWN -	REVISED -				4D	D6 DE MISC 2014-1	MACOUPIN	18	11
Default	PLOT DATE = Feb-19-2014 02:38:08PM	CHECKED -	REVISED -		CONTRACT NO. 72665			ILLINOIS FED. AID PROJECT			
		DATE -	REVISED -		SCALE:	SHEET 1 OF 6 SHEETS	STA. 2111+60.05 TO STA. 2123+50.00				

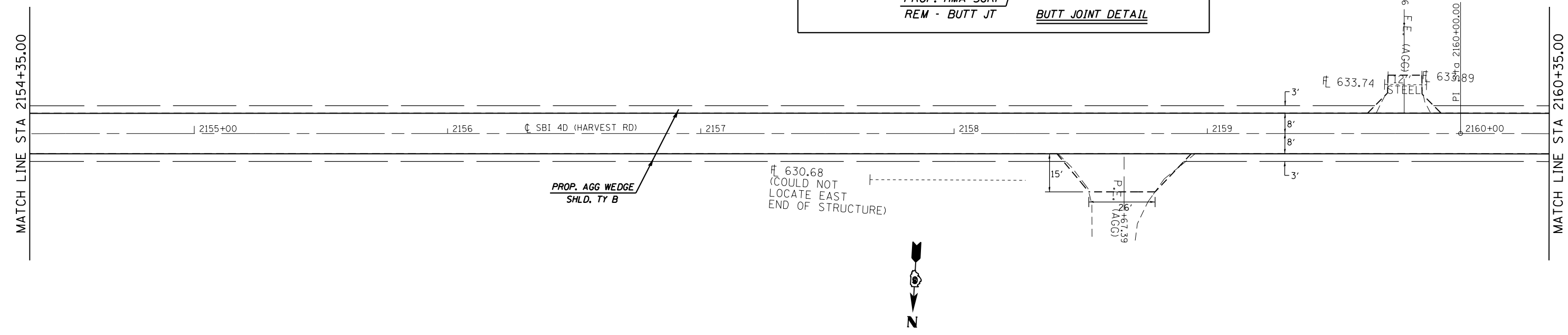
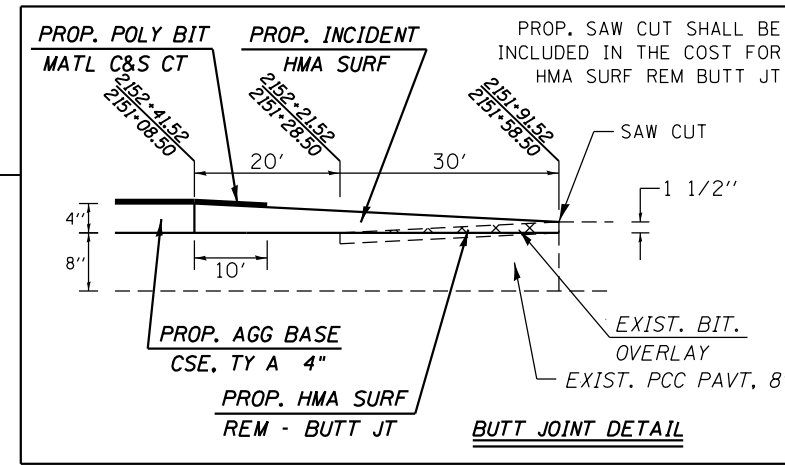
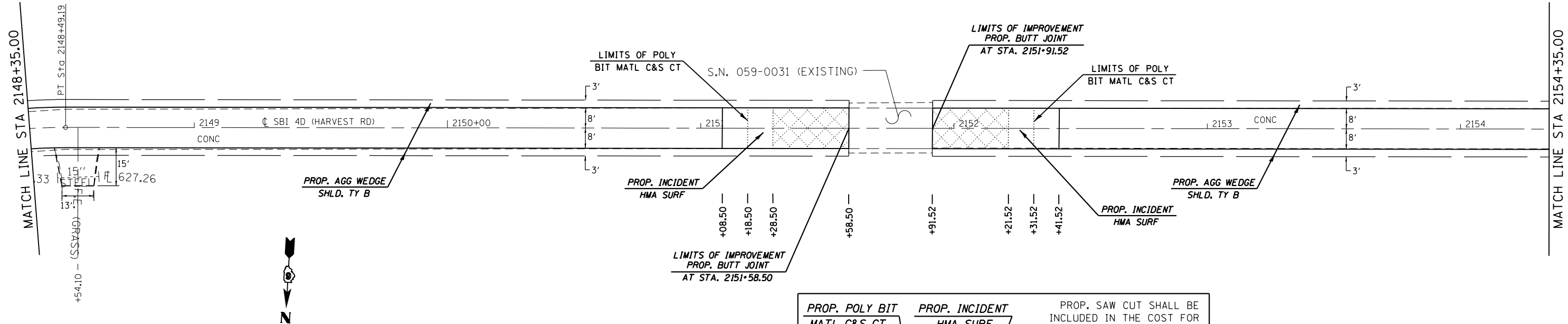


FILE NAME =	USER NAME = sparksgw	DESIGNED -	REVISED -	STATE OF ILLINOIS DEPARTMENT OF TRANSPORTATION	PLAN SHEETS	S.B.I. RTE.	SECTION	COUNTY	TOTAL SHEETS	SHEET NO.	
ci:\pw\work\p\midot\sparksgw\10366942\0672065-sht-plan203.dgn	PLOT SCALE = 40.0000' / in.	DRAWN -	REVISED -			4D	D6 DE MISC 2014-1	MACOUPIN	18	12	
Default	PLOT DATE = Feb-20-2014 10:07:50AM	CHECKED -	REVISED -			CONTRACT NO. 72G65					
		DATE -	REVISED -			ILLINOIS FED. AID PROJECT					

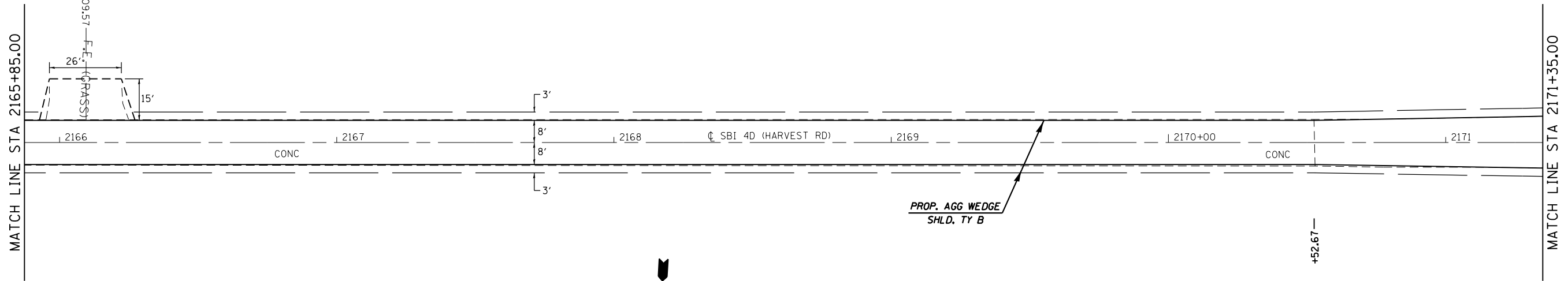
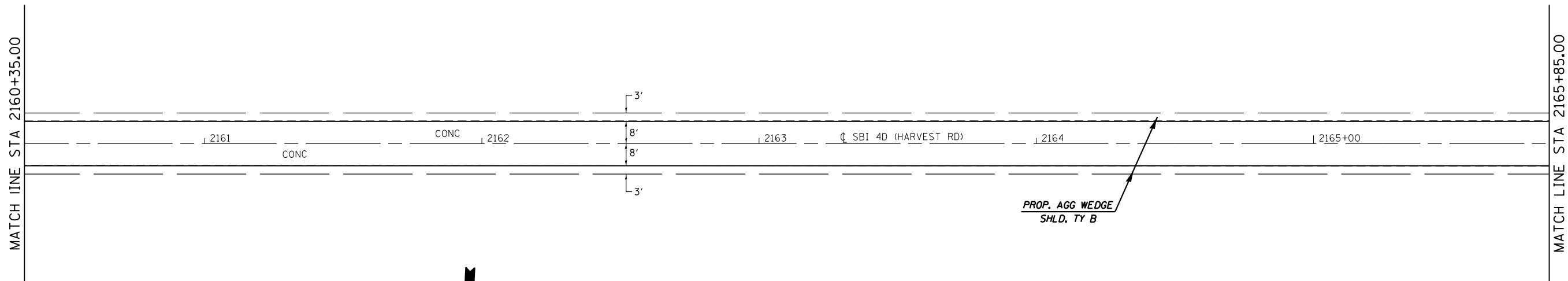


FILE NAME = c:\pwork\pwork\pwork\sparksgw\0366942\0672665-sht-plan203.dgn	USER NAME = sparksgw	DESIGNED -	REVISED -	STATE OF ILLINOIS DEPARTMENT OF TRANSPORTATION	PLAN SHEETS		S.B.I. RTE.	SECTION	COUNTY	TOTAL SHEETS	SHEET NO.
	PLOT SCALE = 40.0000' / in.	CHECKED -	REVISED -		SCALE:	SHEET 3 OF 6 SHEETS	STA. 2135+50.00 TO STA. 2148+35.00	4D	D6 DE MISC 2014-1	MACOUPIN	18
Default	PLOT DATE = Feb-19-2014 02:38:08PM	DATE -	REVISED -				CONTRACT NO. 72G65				
							ILLINOIS FED. AID PROJECT				

BRIDGE OMISSION
STA. 2151+58.50 TO 2151+91.52



FILE NAME =	USER NAME = sparksgw	DESIGNED -	REVISED -	STATE OF ILLINOIS DEPARTMENT OF TRANSPORTATION	PLAN SHEETS		S.B.I. RTE.	SECTION	COUNTY	TOTAL SHEETS	SHEET NO.	
Default	Default	DRAWN -	REVISED -		SCALE:	SHEET 4 OF 6 SHEETS	STA. 2148+35.00 TO STA. 2160+35.00	4D	D6 DE MISC 2014-1	MACOUPIN	18	14
		CHECKED -	REVISED -					CONTRACT NO. 72G65				
		DATE -	REVISED -					ILLINOIS FED. AID PROJECT				

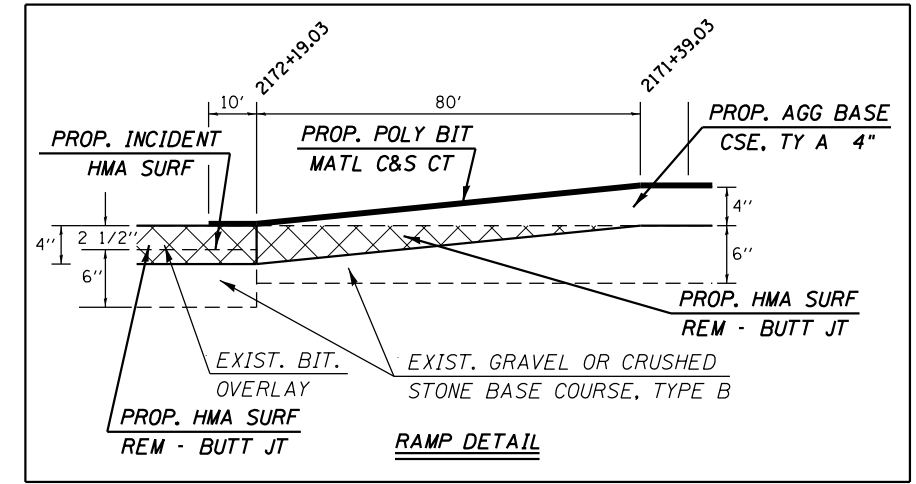
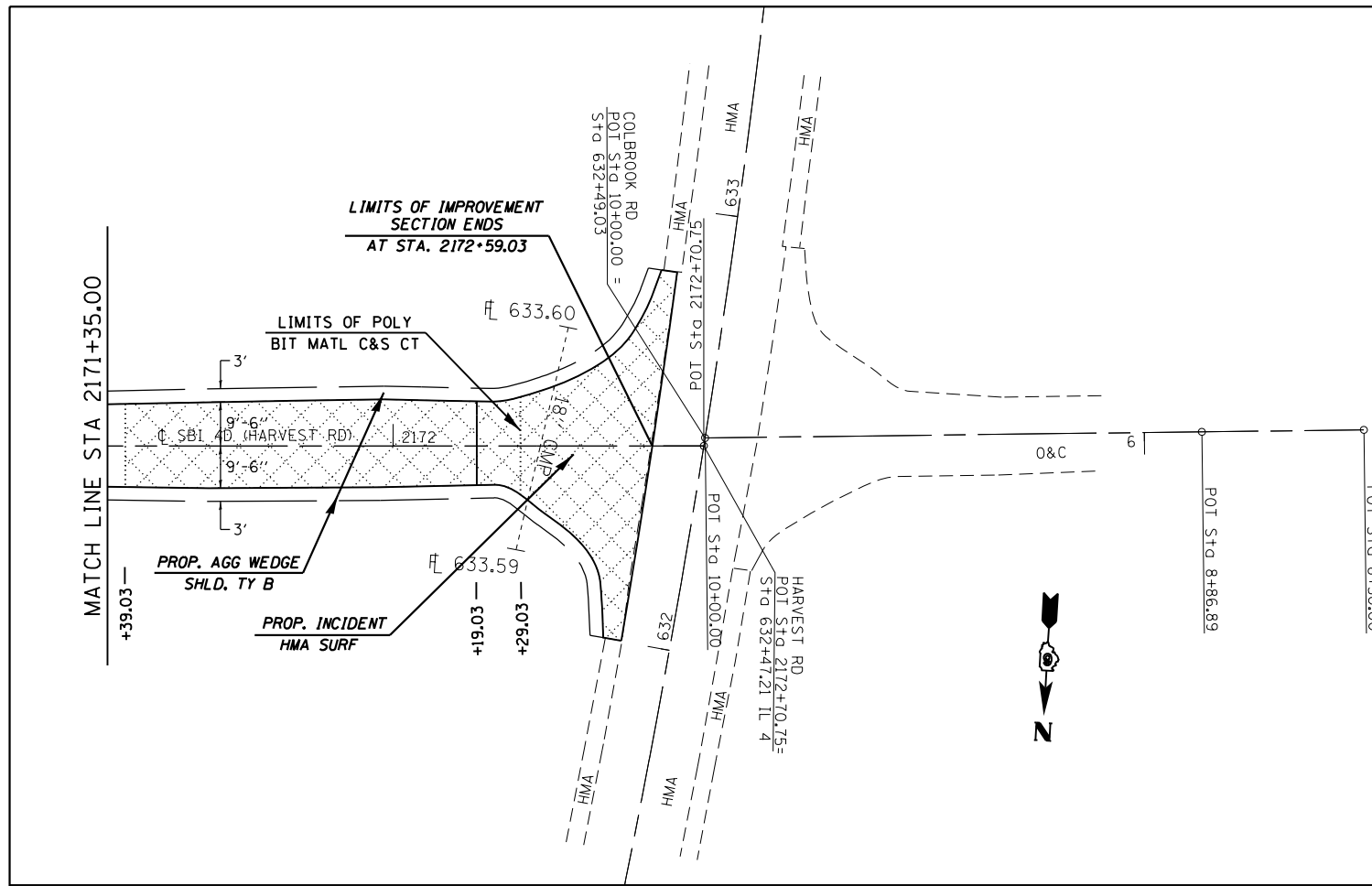


FILE NAME =	USER NAME = sparksgw	DESIGNED -	REVISED -
c:\pwork\pwork\pwork\sparksgw\0366942\0672665-sh-t-Plan204.dgn		DRAWN -	REVISED -
Default	PLOT SCALE = 40.0000' / in.	CHECKED -	REVISED -
	PLOT DATE = Feb-19-2014 02:38:11PM	DATE -	REVISED -

**STATE OF ILLINOIS
DEPARTMENT OF TRANSPORTATION**

PLAN SHEETS			
SCALE:	SHEET 5 OF 6 SHEETS	STA. 2160+35.00 TO STA. 2171+35.00	

S.B.I. RTE.	SECTION	COUNTY	TOTAL SHEETS	SHEET NO.
4D	D6 DE MISC 2014-1	MACOUPIN	18	15
CONTRACT NO. 72G65			ILLINOIS FED. AID PROJECT	

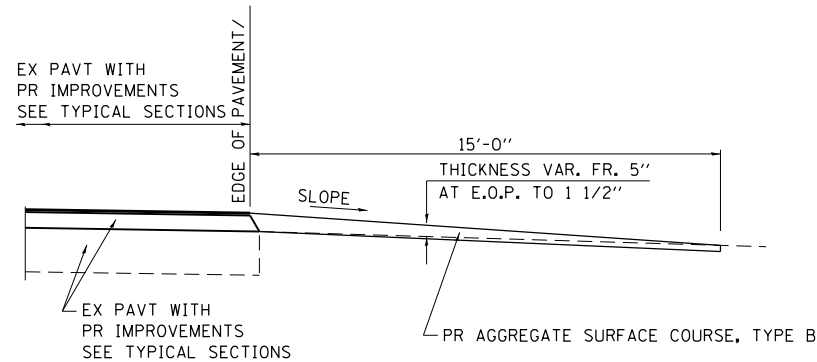


FILE NAME =	USER NAME = sparksgw	DESIGNED -	REVISED -
c:\pw\work\p\idot\sparksgw\0366942\0672065-sh1-Plan204.dgn		DRAWN -	REVISED -
	PLOT SCALE = 40.0000' / in.	CHECKED -	REVISED -
Default	PLOT DATE = Feb-19-2014 02:38:11PM	DATE -	REVISED -

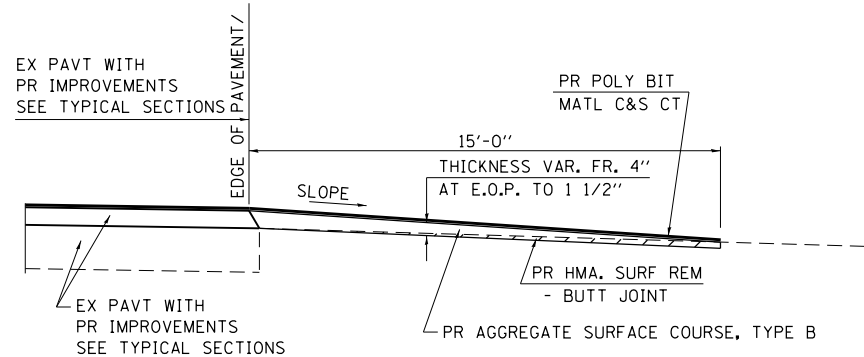
**STATE OF ILLINOIS
DEPARTMENT OF TRANSPORTATION**

PLAN SHEETS			
SCALE:	SHEET 6 OF 6 SHEETS	STA. 2171+35.00 TO STA. 2172+59.03	

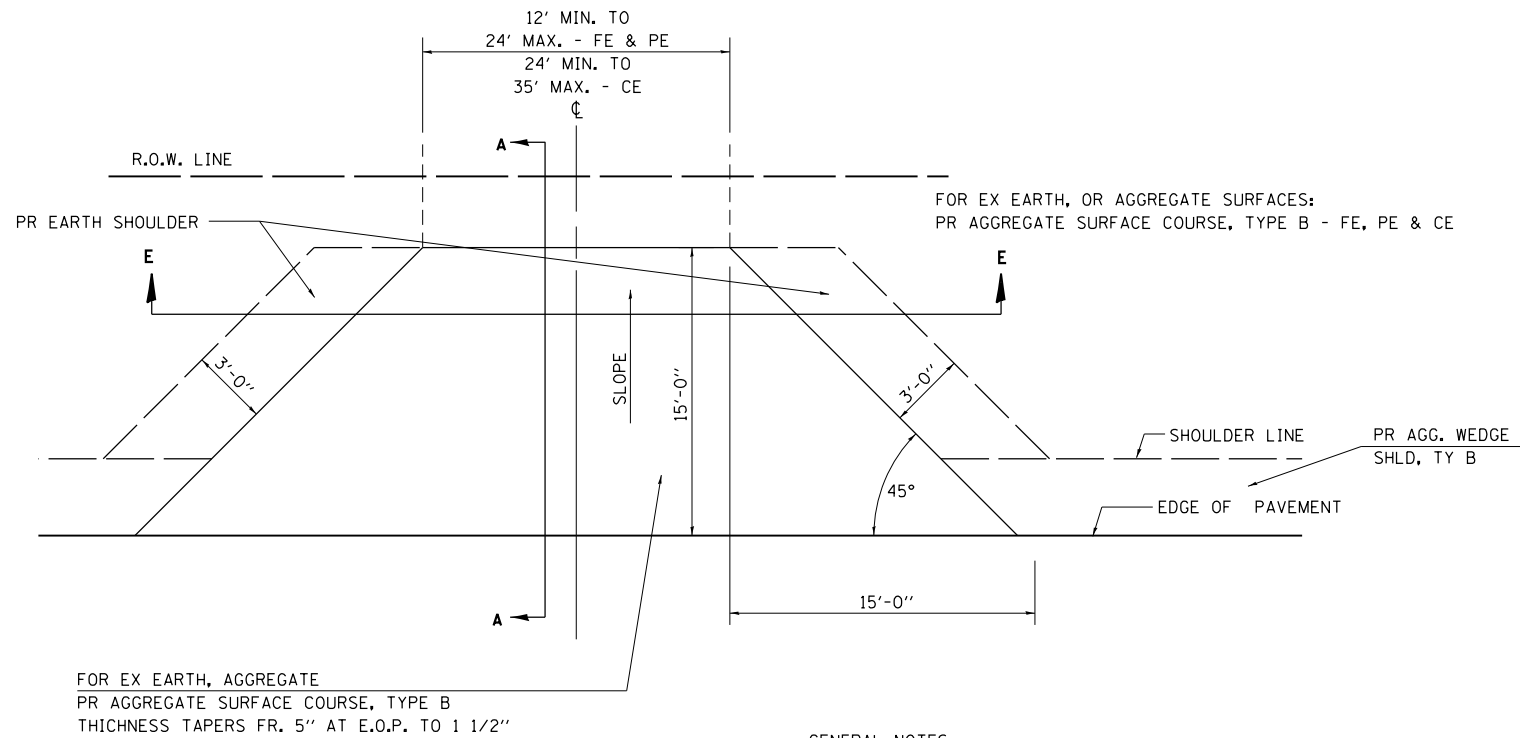
S.B.I. RTE.	SECTION	COUNTY	TOTAL SHEETS	SHEET NO.
4D	D6 DE MISC 2014-1	MACOUPIN	18	16
ILLINOIS FED. AID PROJECT			CONTRACT NO. 72G65	



SECTION A-A FOR EX EARTH/AGGREGATE FE, PE, & CE



SECTION A-A FOR EX BIT SIDE RD



GENERAL NOTES:

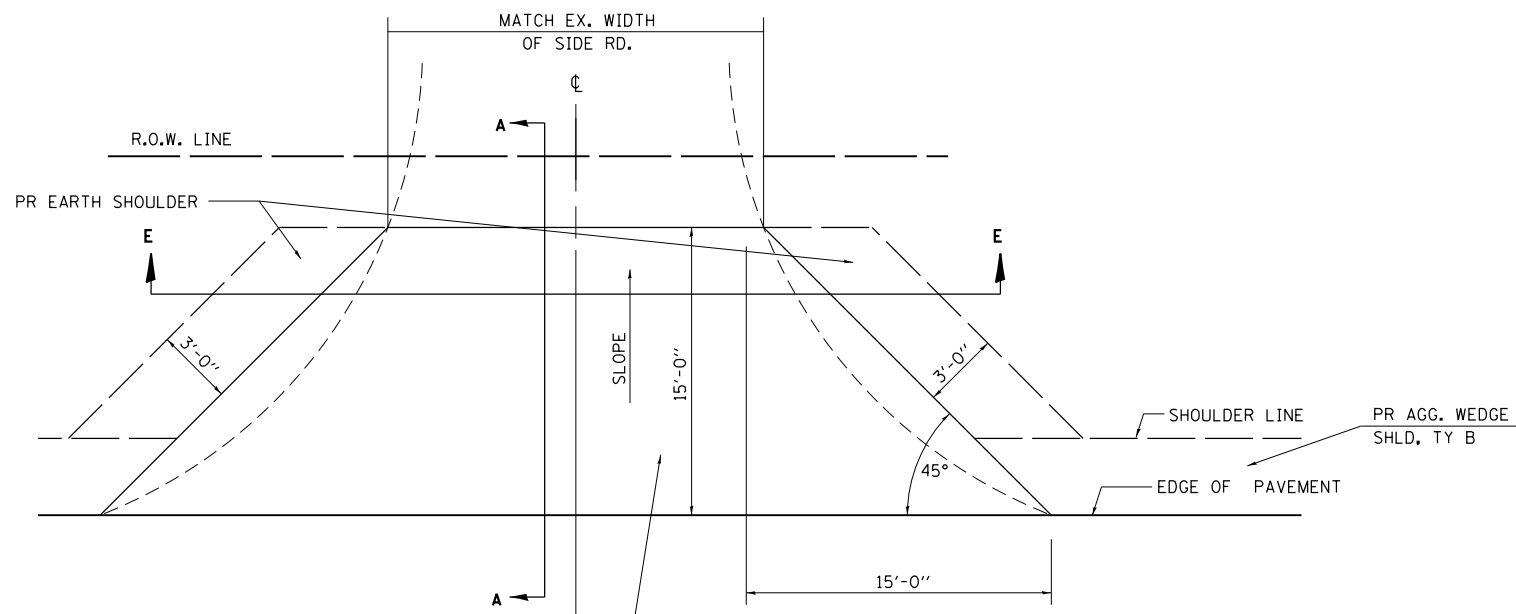
THE RESIDENT ENGINEER WILL DETERMINE THE EXACT TYPE OF IMPROVEMENT TO BE COMPLETED FOR ALL ENTRANCES, SIDEROADS AND MAILBOX TURNOUTS ON THIS PROJECT.

THE PLAN DETAILS AND SCHEDULES SHOULD BE USED AS A GUIDE FOR THE ENGINEER TO IMPLEMENT THE FINAL DESIGN. THE ENGINEER MAY DECIDE TO SALVAGE PORTIONS OF THE EXISTING ENTRANCE PAVEMENT STRUCTURE; THEREFORE, REDUCING PAY ITEM QUANTITIES. NO ADDITIONAL PAYMENT WILL BE ALLOWED FOR THIS REDUCTION IN QUANTITIES.

ANY WORK THE ENGINEER REQUIRES WHICH IS NOT COVERED BY A PAY ITEM CONTAINED IN THE PLANS WILL BE PAID FOR IN ACCORDANCE WITH ARTICLE 109.04 OF THE STANDARD SPECIFICATIONS.

ALL EARTHWORK RELATING TO GRADING OF EARTH SHOULDERS SURROUNDING ENTRANCES AND SIDE ROADS AS INDICATED ON THE PLANS SHALL BE INCLUDED IN THE COST FOR AGGREGATE SURFACE COURSE, TYPE B.

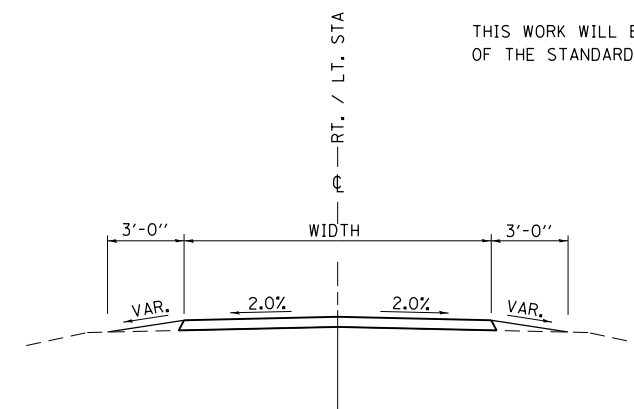
THIS WORK WILL BE PAID FOR IN ACCORDANCE WITH SECTIONS 402 AND 403 OF THE STANDARD SPECIFICATIONS.



FOR EX BITUMINOUS
PR AGGREGATE SURFACE COURSE, TYPE B
THICKNESS TAPERS FR. 4" AT E.O.P. TO 1 1/2"

PR HOT-MIX ASPHALT SURFACE
REMOVAL - BUTT JOINT

PR POLYMERIZED BITUMINOUS MATERIALS
(COVERS AND SEAL COATS)



SECTION E - E ENTRANCE & SIDE ROAD TYPICAL SECTION

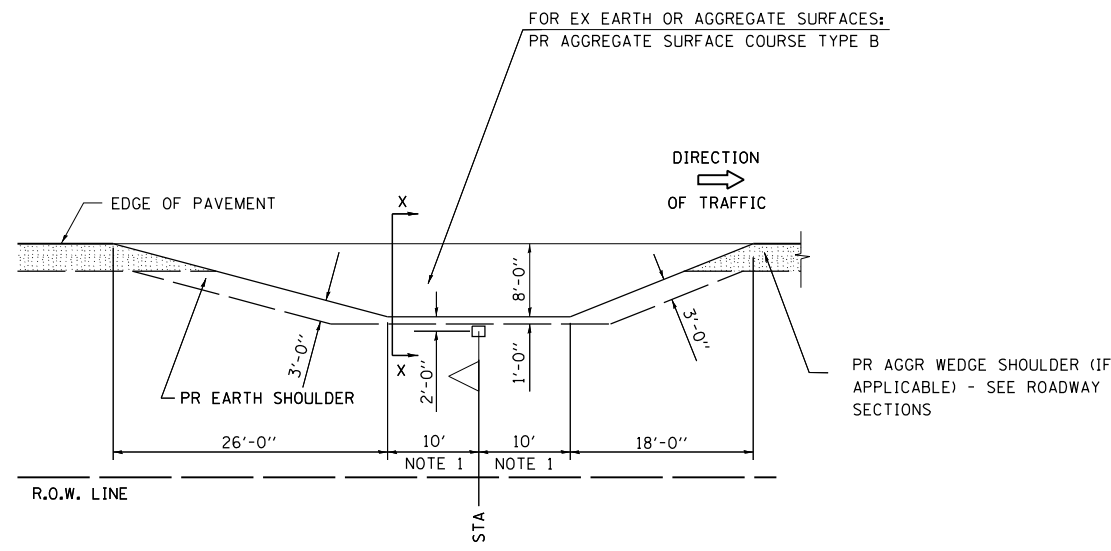
FILE NAME =	USER NAME = sparksgw	DESIGNED - JWC	REVISED -	STATE OF ILLINOIS DEPARTMENT OF TRANSPORTATION	ENTRANCE AND SIDE ROAD DETAILS			S.B.I. RTE.	SECTION	COUNTY	TOTAL SHEETS	SHEET NO.
ct:\pw\work\p\idot\sparksgw\10366942\0672065-sht-details.dgn		DRAWN - JWC	REVISED -		4D	D6 DE MISC 2014-1	MACOUPIN	18	17			
	PLOT SCALE = 40.0000' / in.	CHECKED - RSC	REVISED -		SCALE: NTS	SHEET 1 OF 2 SHEETS	STA.	TO STA.	CONTRACT NO. 72G65			
	PLOT DATE = Feb-19-2014 02:38:12PM	DATE -	REVISED -		ILLINOIS FED. AID PROJECT							

DETAILS OF MAILBOX TURNOUTS

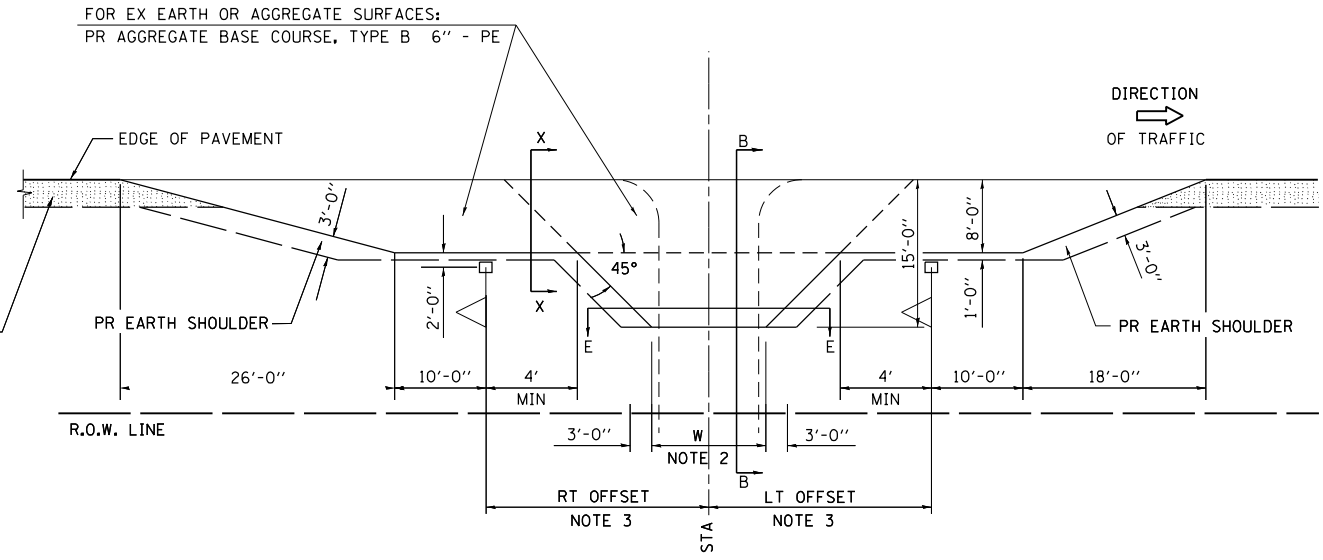
NOTE 1 IF MORE THAN ONE MAILBOX IS PRESENT, DIMENSION FROM CENTER OF END MAILBOX.

NOTE 2 FOR ENTRANCE LAYOUT DIMENSIONS AND SECTIONS A-A & E-E REFER TO THE SCHEDULES IN THE PLANS.

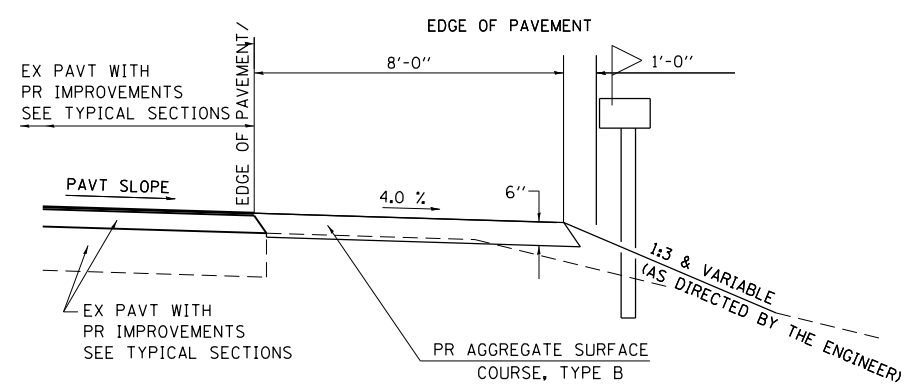
NOTE 3 BOTH LT OR RT OFFSETS FOR MAILBOX SHOWN USE OFFSET DIMENSION PER SCHEDULE AND REFER TO LAYOUT SHOWN ON THE PLAN.



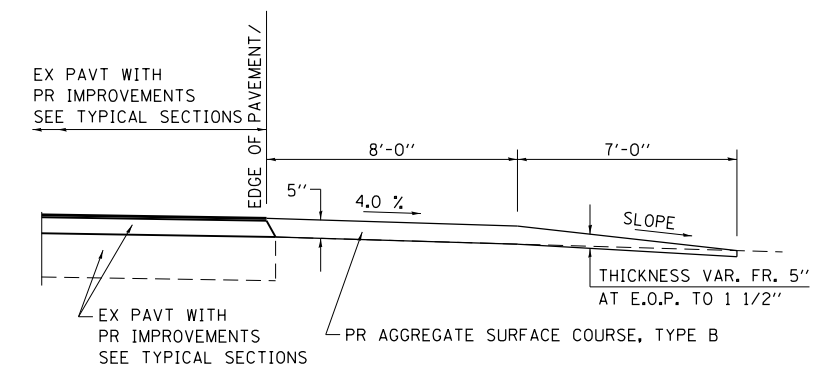
PLAN - MAILBOX TURNOUTS



PLAN - COMBINED MAILBOX TURNOUT WITH TRAILING OR LEADING PRIVATE ENTRANCE



SECTION X-X THRU MAILBOX TURNOUT WITH EX EARTH OR AGGREGATE PE



SECTION B-B THRU MAILBOX TURNOUT COMBINED WITH EX EARTH OR AGGREGATE PE

FILE NAME =	USER NAME = sparksgw	DESIGNED - JWC	REVISED -	STATE OF ILLINOIS DEPARTMENT OF TRANSPORTATION	RURAL ENTRANCE W/ MAILBOX TURNOUT DETAILS		S.B.I. RTE.	SECTION	COUNTY	TOTAL SHEETS	SHEET NO.	
et:\pw\work\p\idot\sparksgw\10366942\0672065-sht-details.dgn	DRAWN - JWC	REVISED -	4D				D6 DE MISC 2014-1	MACOUPIN	18	18		
PLOT SCALE = 40.0000' / in.	CHECKED - RSC	REVISED -	CONTRACT NO. 72G65									
PLOT DATE = Feb-19-2014 02:38:13PM	DATE -	REVISED -	ILLINOIS FED. AID PROJECT									
					SCALE: NTS	SHEET 2 OF 2 SHEETS	STA.	TO STA.				