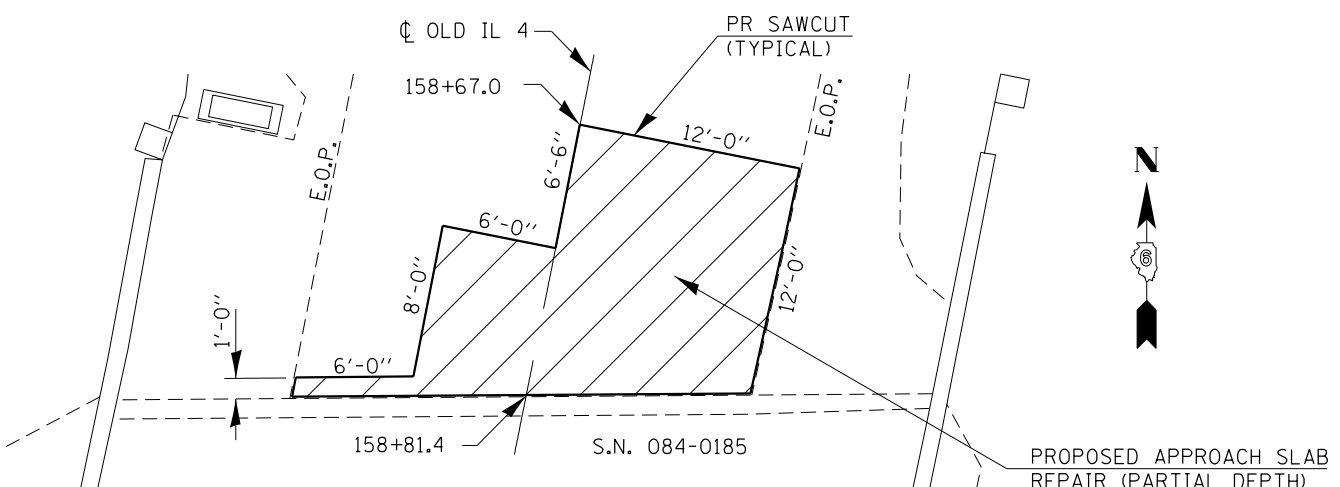
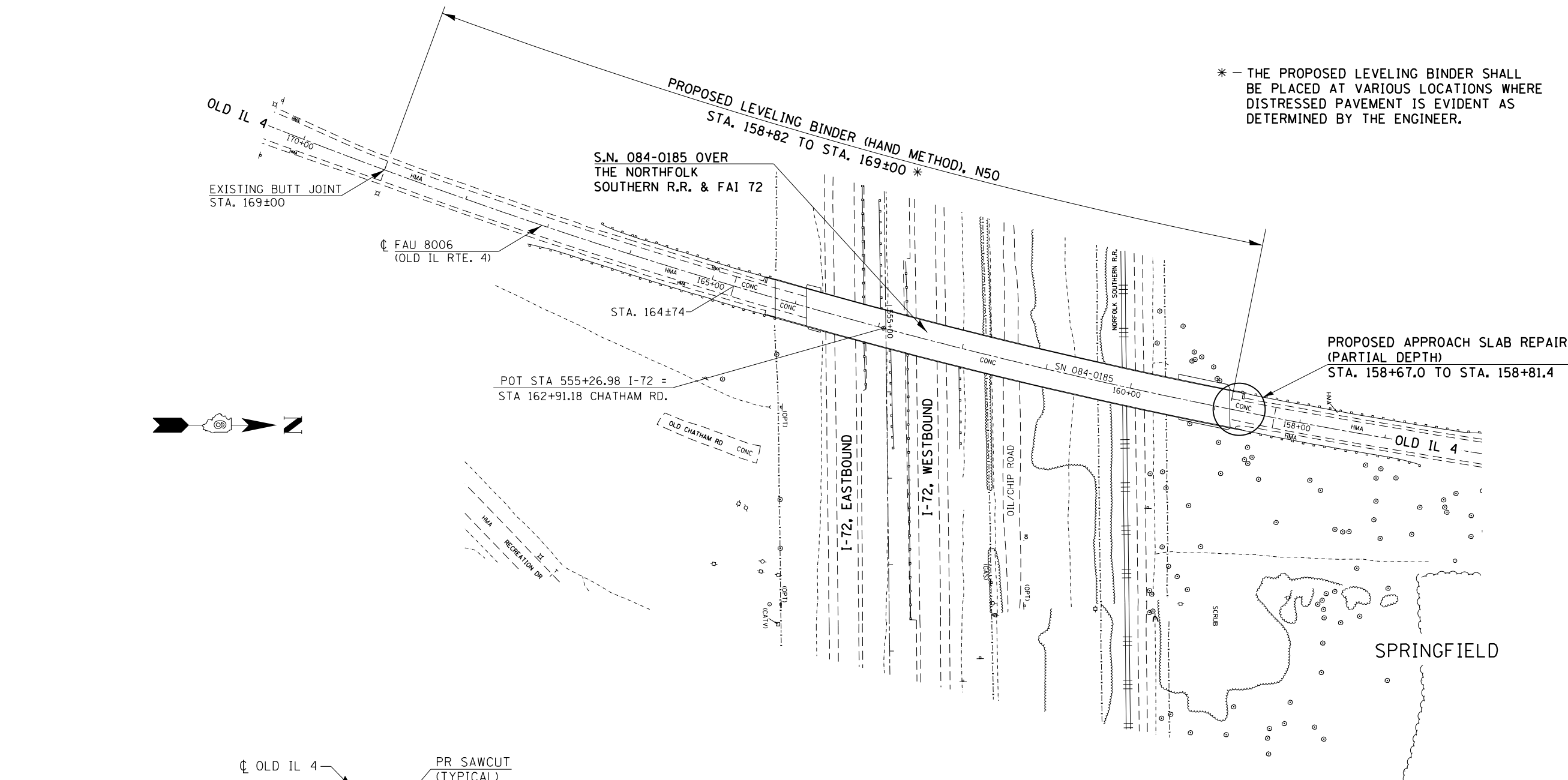


* - THE PROPOSED LEVELING BINDER SHALL BE PLACED AT VARIOUS LOCATIONS WHERE DISTRESSED PAVEMENT IS EVIDENT AS DETERMINED BY THE ENGINEER.



**PLAN VIEW (NORTH SIDE OF S.N. 084-0185)
BRIDGE APPROACH SLAB REPAIR (PARTIAL DEPTH)**
(SEE SHEET 9 FOR APPROACH CROSS SECTION)

PROPOSED APPROACH SLAB REPAIR (PARTIAL DEPTH)
23.2 SQ YD
**

** - THE DEPTH OF PROPOSED SLAB REPAIR SHALL BE 1" MINIMUM BELOW THE TOP REINFORCEMENT MATTING. PROPOSED SLAB REPAIR SHALL NOT EXCEED 6" MAXIMUM.

BILL OF MATERIALS			
CODE #	ITEM	UNIT	QUANTITY
Z0001800	APPROACH SLAB REPAIR (PARTIAL DEPTH)	SQ YD	23.2
40600525	LEVELING BINDER (HAND METHOD), N50	TON	5.0 *

• FAU 8006 OVER FAI 72
•• SANGAMON