

F.A.S. RTE.	SECTION	COUNTY	TOTAL SHEETS	SHEET NO.
1733	(20R) Q-2	LOGAN	6	1
FED. ROAD DIST. NO.	ILLINOIS	CONTRACT NO. 72G68		

STATE OF ILLINOIS
DEPARTMENT OF TRANSPORTATION
DIVISION OF HIGHWAYS

PROPOSED CONTRACT MAINTENANCE

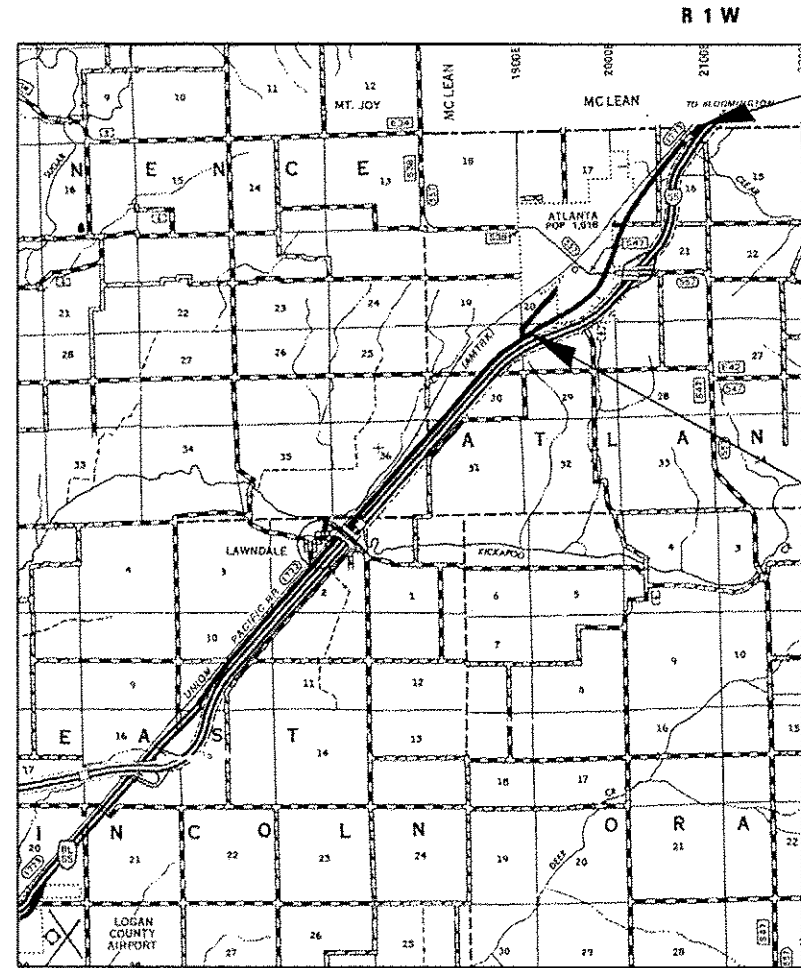
FOR INDEX OF SHEETS, SEE SHEET NO. 2

FAS 1733 (FR I-55 WEST)
SECTION (20R) Q-2

LOGAN COUNTY

C-96-038-14

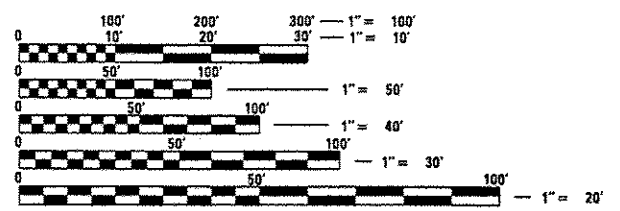
D-96-038-14



END PROJECT
STA. 587 + 25.00

BEGIN PROJECT
STA. 431 + 05.00

ADT = 1,700
SU = 100
MU = 30



FULL SIZE PLANS HAVE BEEN PREPARED USING STANDARD ENGINEERING SCALES. REDUCED SIZED PLANS WILL NOT CONFORM TO STANDARD SCALES. IN MAKING MEASUREMENTS ON REDUCED PLANS, THE ABOVE SCALES MAY BE USED.

J.U.L.I.E.
JOINT UTILITY LOCATION INFORMATION FOR EXCAVATION
1-800-892-0123
OR 811

PLAN AND CONTRACT TECHNICIAN
TIMOTHY SHARP (217)782-7743

CONTRACT NO. 72G68

GROSS LENGTH = 15,620.00 FT. = 2.958 MILE

STATE OF ILLINOIS
DEPARTMENT OF TRANSPORTATION
DIVISION OF HIGHWAYS

SUBMITTED FEBRUARY 5 20 14
Roger Z. Smith
DEPUTY DIRECTOR OF HIGHWAYS, REGION ENGINEER

MARCH 21 20 14
John D. Baramzelli, P.E.
ENGINEER OF DESIGN AND ENVIRONMENT

MARCH 21 20 14
Omer Osman, P.E.
DIRECTOR OF HIGHWAYS, CHIEF ENGINEER

PRINTED BY THE AUTHORITY
OF THE STATE OF ILLINOIS