

STATE OF ILLINOIS
DEPARTMENT OF TRANSPORTATION
DIVISION OF HIGHWAYS
PROPOSED
CONTRACT MAINTENANCE

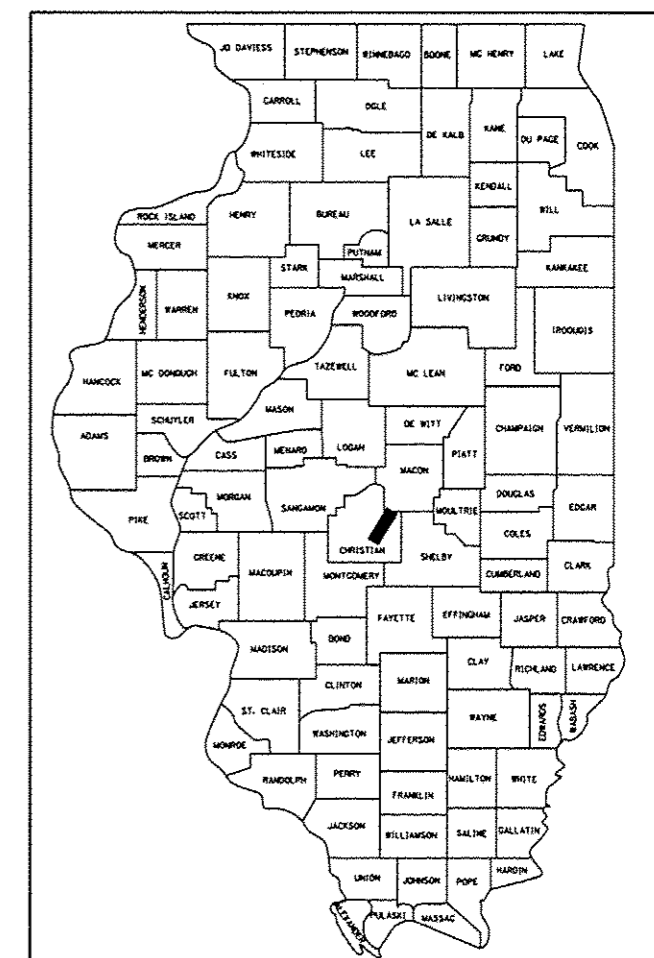
FOR INDEX OF SHEETS, SEE SHEET NO. 2

FAS 1733 (FR I-55 WEST)
SECTION (20R) Q-2

LOGAN COUNTY

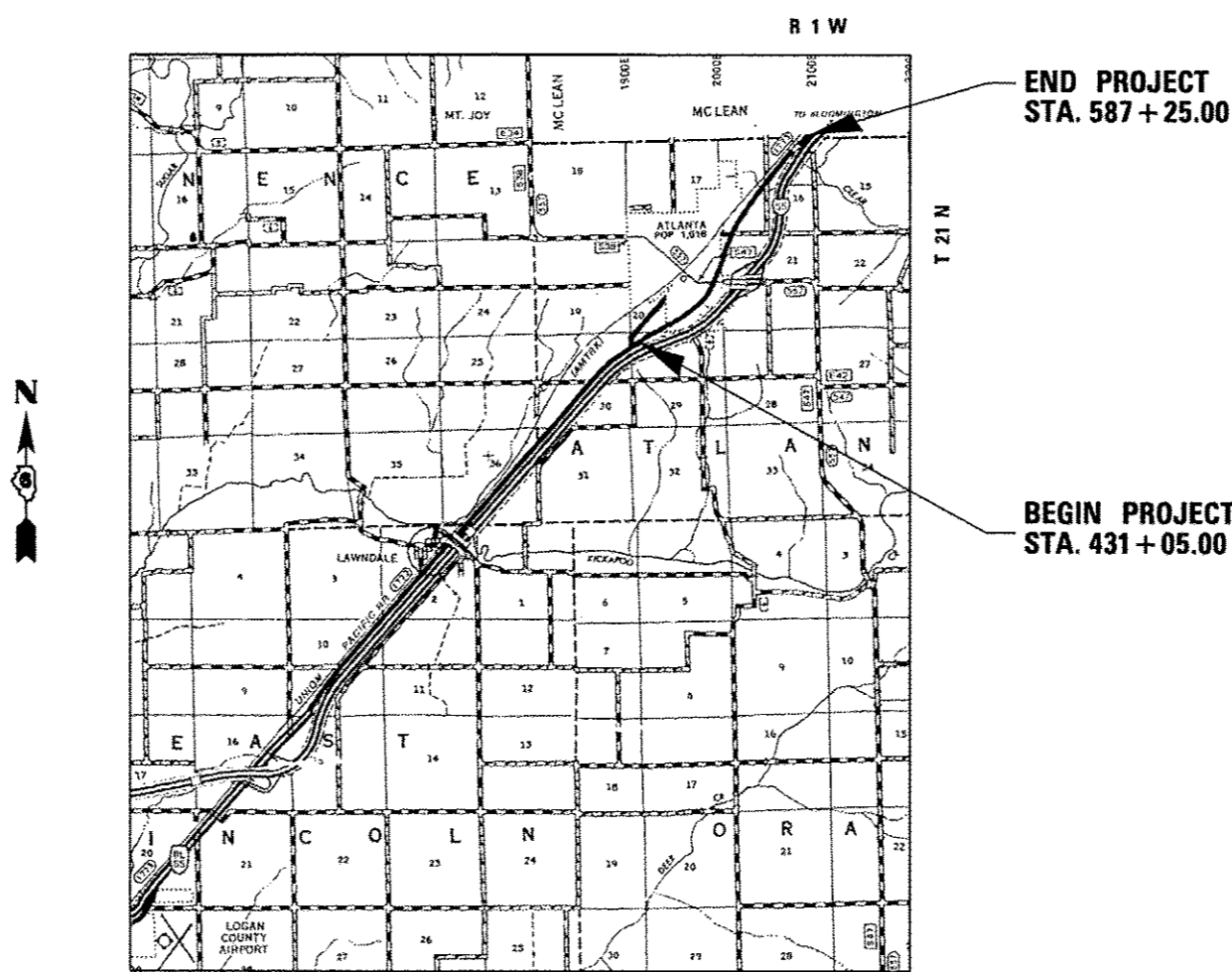
F.A.S. RTE.	SECTION	COUNTY	TOTAL SHEETS	SHEET NO.
1733	(20R) Q-2	LOGAN	6	1
FED. ROAD DIST. NO.	ILLINOIS	CONTRACT NO.	72G68	

D-96-038-14



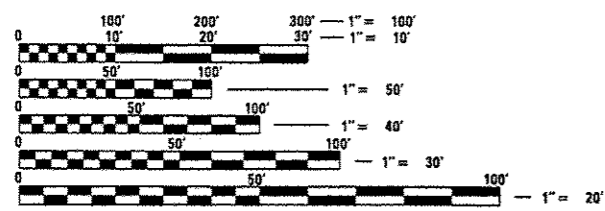
LOCATION OF SECTION INDICATED THUS: - [thick black line] -

C-96-038-14



GROSS LENGTH = 15,620.00 FT. = 2.958 MILE

ADT = 1,700
 SU = 100
 MU = 30



FULL SIZE PLANS HAVE BEEN PREPARED USING STANDARD ENGINEERING SCALES. REDUCED SIZED PLANS WILL NOT CONFORM TO STANDARD SCALES. IN MAKING MEASUREMENTS ON REDUCED PLANS, THE ABOVE SCALES MAY BE USED.

J.U.L.I.E.
 JOINT UTILITY LOCATION INFORMATION FOR EXCAVATION
 1-800-892-0123
 OR 811

PLAN AND CONTRACT TECHNICIAN
 TIMOTHY SHARP (217)782-7743

CONTRACT NO. 72G68

STATE OF ILLINOIS
 DEPARTMENT OF TRANSPORTATION
 DIVISION OF HIGHWAYS

SUBMITTED FEBRUARY 5 20 14
Roger Z. Smith
 DEPUTY DIRECTOR OF HIGHWAYS, REGION ENGINEER

MARCH 21 20 14
John D. Baramzelli, P.E.
 ENGINEER OF DESIGN AND ENVIRONMENT

MARCH 21 20 14
Omer Osman, P.E.
 DIRECTOR OF HIGHWAYS, CHIEF ENGINEER

**PRINTED BY THE AUTHORITY
 OF THE STATE OF ILLINOIS**

INDEX OF SHEETS

1. COVER
2. INDEX OF SHEETS, GENERAL NOTES, AND HIGHWAY STANDARDS
3. SUMMARY OF QUANTITIES
4. PLAN
5. TYPICAL SECTIONS
6. SCHEDULES

HIGHWAY STANDARDS

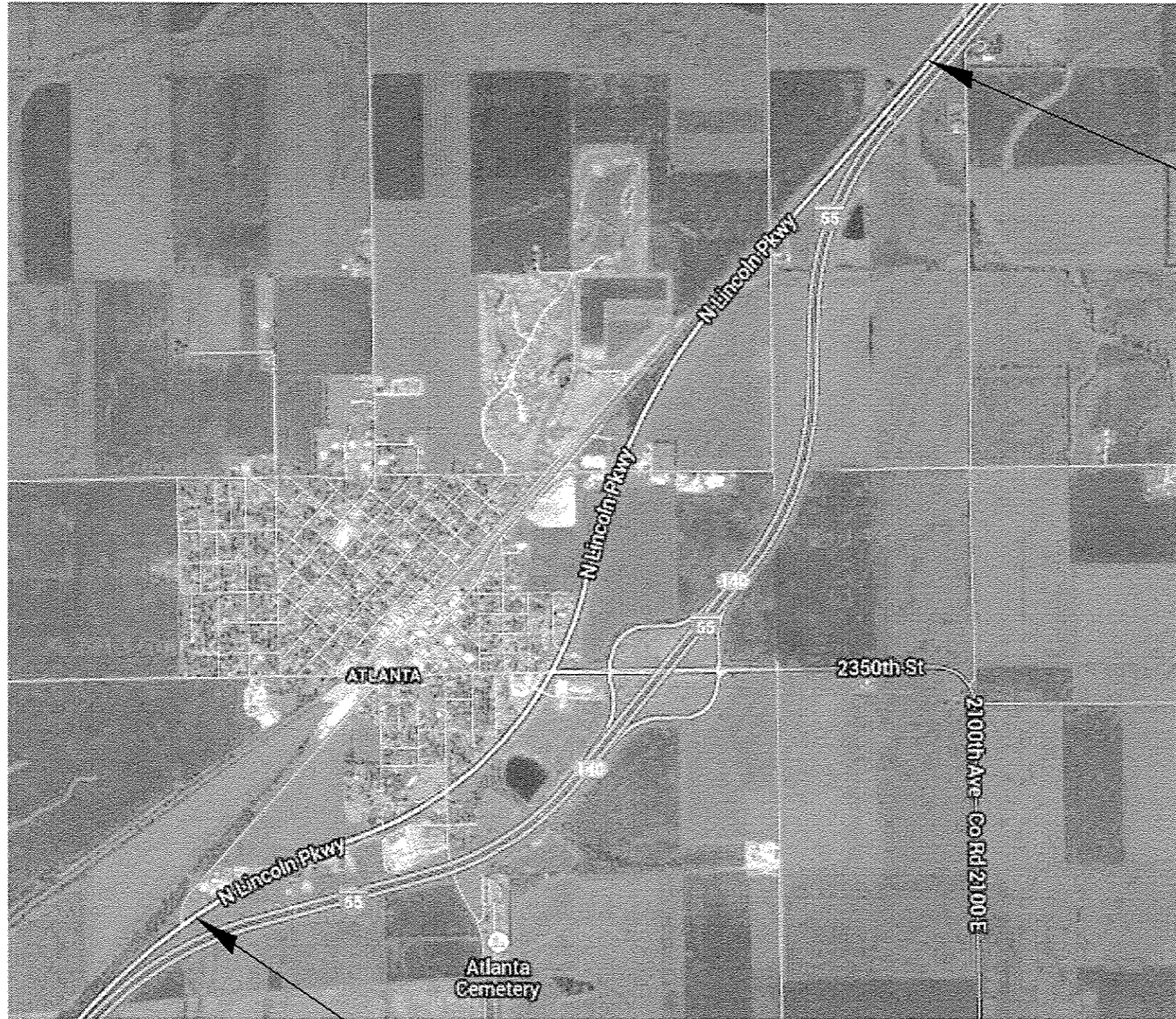
- 701001-02 OFF-RD OPERATIONS, 2L, 2W, MORE THAN 15' AWAY FROM EDGE OF PAVEMENT
 701006-05 OFF-RD OPERATIONS, 2L, 2W, 15' TO 24" FROM EDGE OF PAVEMENT
 701011-04 OFF-RD MOVING OPERATIONS, 2L, 2W, DAY ONLY
 701301-04 LANE CLOSURE, 2L, 2W, SHORT TIME OPERATIONS
 701306-03 LANE CLOSURE, 2L, 2W, SLOW MOVING OPERATIONS DAY ONLY, FOR SPEEDS > 45 MPH
 701311-03 LANE CLOSURE, 2L, 2W, MOVING OPERATIONS DAY ONLY
 701901-03 TRAFFIC CONTROL DEVICES
 780001-04 TYPICAL PAVEMENT MARKINGS

GENERAL NOTES

1. ANY REFERENCE TO THE STANDARDS THROUGHOUT THE PLANS SHALL BE INTERPRETED TO BE THE LATEST STANDARDS OF THE DEPARTMENT AS INCLUDED IN THE PLANS.
2. NO EXCAVATION IS ANTICIPATED ON THIS PROJECT. SHOULD ANY EXCAVATION BE REQUIRED, J.U.L.I.E. SHALL BE NOTIFIED A MINIMUM OF 48 HOURS IN ADVANCE (800) 892-0123.
3. THE AGGREGATE GRADATION FOR THE A-1 BITUMINOUS SURFACE TREATMENT SHALL BE CA-16 OR CA-20.
4. AGGREGATE FOR THE A-1 BITUMINOUS SURFACE TREATMENT SHALL BE CRUSHED LIMESTONE.
5. SHORT-TERM PAVEMENT MARKING SHALL BE PAINT - TAPE WILL NOT BE ALLOWED.
6. PERMANENT PAVEMENT MARKINGS SHALL NOT BE APPLIED UNTIL 10 DAYS AFTER THE AGGREGATE HAS BEEN APPLIED.
7. ADDITIONAL BROOMING (UP TO 4 TIMES) SHALL BE REQUIRED AT THE DISCRETION OF THE ENGINEER, INCLUDING THE DAY OF PERMANENT PAVEMENT MARKING.
8. THE CONTRACTOR SHALL GIVE IDOT OPERATIONS TWO WEEKS NOTICE PRIOR TO STARTING WORK IN ORDER FOR IDOT TO COMPLETE PATCHING.

STATE OF ILLINOIS DEPARTMENT OF TRANSPORTATION DIVISION OF HIGHWAYS DISTRICT 6	
EXAMINED <u>01/30/</u>	20 <u>14</u>
<i>Mark R. White</i> for <i>William M. Burger</i> ENGINEER OF OPERATIONS	
EXAMINED <u>JAN 21</u>	20 <u>14</u>
<i>Jimmy Lee</i> ENGINEER OF PROJECT IMPLEMENTATION	
EXAMINED <u>Jan 21</u>	20 <u>14</u>
<i>2RML</i> ENGINEER OF PROGRAM DEVELOPMENT	

FILE NAME *	USER NAME * shorptd	DESIGNED -	REVISED -	STATE OF ILLINOIS DEPARTMENT OF TRANSPORTATION	INDEX OF SHEETS, HIGHWAY STANDARDS AND GENERAL NOTES	F.A.S. RTE.	SECTION	COUNTY	TOTAL SHEETS	SHEET NO.	
os\pr\work\pavdos\shorptd\0366863\0672568-shl-genote.dgn		DRAWN -	REVISED -			1773	(20R) 0-2	LOGAN	6	2	
Default		CHECKED -	REVISED -			SCALE: SHEET OF SHEETS STA. TO STA.		CONTRACT NO. 72G68			
		DATE -	REVISED -			ILLINOIS FED. AID PROJECT					



END PROJECT
STA. 587+25.00

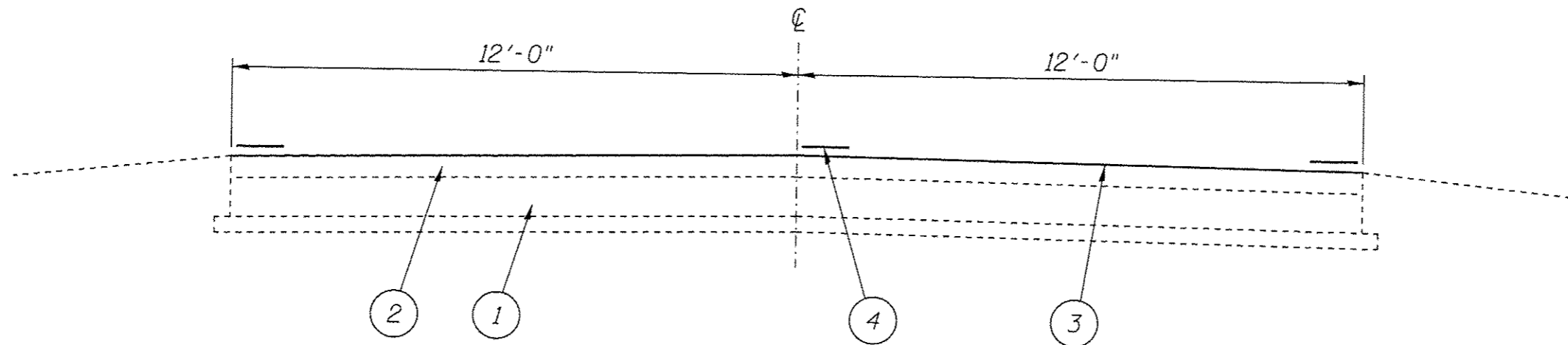
BEGIN PROJECT
STA. 431+05.00

FILE NAME *	USER NAME * shorptd	DESIGNED -	REVISED -
c:\pwork\pwork\shorptd\08366863\0672	shorptd	DRAWN -	REVISED -
Default		CHECKED -	REVISED -
		DATE -	REVISED -

**STATE OF ILLINOIS
DEPARTMENT OF TRANSPORTATION**

PLAN	
I-55 WEST FRONTAGE ROAD	
SCALE:	SHEET _ OF _ SHEETS STA. _ TO STA. _

F.A.S. RTE.	SECTION	COUNTY	TOTAL SHEETS	SHEET NO.
1773	(20R) 0-2	LOGAN	6	4
CONTRACT NO. 72668				
ILLINOIS FED. AID PROJECT				



STA. 431+05 TO 587+25

L E G E N D

- 1- EXIST. P.C.C. PAVEMENT 10"
- 2- EXIST. HOT-MIX ASPHALT SURFACE
- 3- PROP. BIT. SURF. TREATMENT (CL. A-1)
- 4- PAINT PAVEMENT MARKING - LINE 5"

FILE NAME *	USER NAME * ehorptd	DESIGNED -	REVISED -	STATE OF ILLINOIS DEPARTMENT OF TRANSPORTATION	TYPICAL SECTION		F.A.S. RTE.	SECTION	COUNTY	TOTAL SHEETS	SHEET NO.
dt\pwwork\p\p\id\shorptd\0366663\0672	08-shi-typicel.dgn	DRAWN -	REVISED -				1773	(20R) Q-2	LOGAN	6	5
SHT_PLAN	PLOT SCALE * 3.0000' / 1"	CHECKED -	REVISED -		SCALE: SHEET _ OF _1 SHEETS STA. TO STA.		CONTRACT NO. 7G68				
	PLOT DATE * Feb-03-2014 06:12:14AM	DATE -	REVISED -		ILLINOIS FED. AID PROJECT						

PAVEMENT MARKING SCHEDULE			
STATION	TYPE	PAINT PAV'T	
		MRK - LINE 5"	
		YELLOW	WHITE
STA. 431+05 TO 587+25	SKIP DASH	3,910 FT	
LT & RT STA. 431+05 TO 587+25635+94	EDGE		31,240 FT
TOTALS		3,910 FT	31,240 FT