

MS RTE.	SECTION	COUNTY	TOTAL SHEETS	SHEET NO.
1040	(1-9)I	ADAMS	5	1
		ILLINOIS	CONTRACT NO. 72G79	

STATE OF ILLINOIS
DEPARTMENT OF TRANSPORTATION
DIVISION OF HIGHWAYS
**PROPOSED
HIGHWAY PLANS**

MS ROUTE 1040 (CENTER ST.)
SECTION (1-9)I

D.E. MISCELLANEOUS
ADAMS COUNTY

C-96-050-14
R 7 W

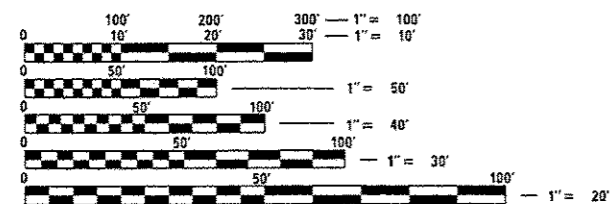
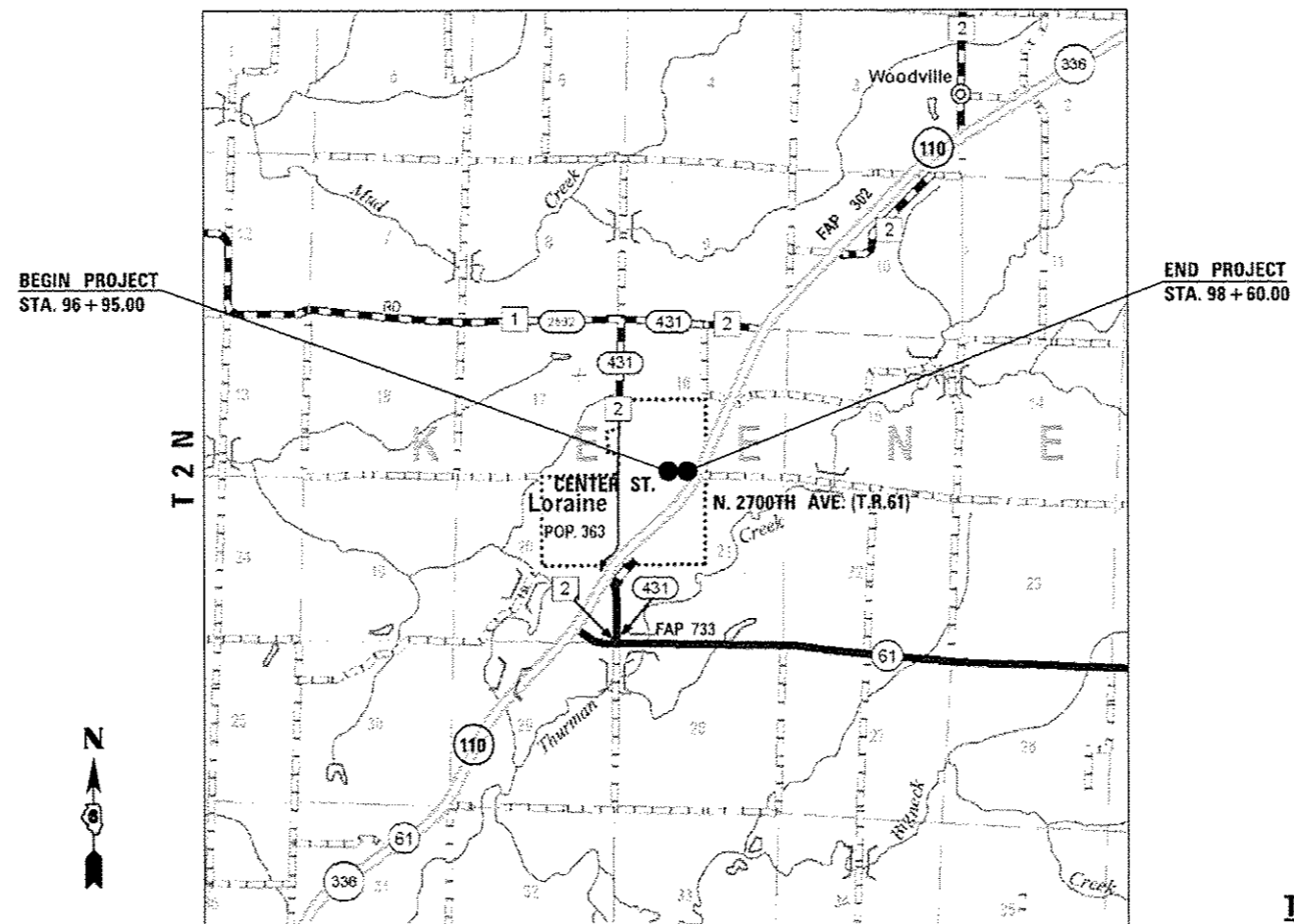
INDEX OF SHEETS

- 1 COVER SHEET
- 2 GENERAL NOTES
- 3 SUMMARY OF QUANTITIES
- 4 SCHEDULE OF QUANTITIES /TYPICAL SECTION /DETAILS
- 5 PLAN AND PROFILE SHEET

STANDARDS

B.L.R. 21-9 601101-01
B.L.R. 22-7 701901-03

D-96-050-14



FULL SIZE PLANS HAVE BEEN PREPARED USING STANDARD ENGINEERING SCALES. REDUCED SIZED PLANS WILL NOT CONFORM TO STANDARD SCALES. IN MAKING MEASUREMENTS ON REDUCED PLANS, THE ABOVE SCALES MAY BE USED.

J.U.L.I.E.
JOINT UTILITY LOCATION INFORMATION FOR EXCAVATION
1-800-892-0123
OR 811

SENIOR TEAM ENGINEER: MARK DUST (217) 785-0597
TEAM MANAGER: JARED MARTIN (217) 524-0064

CONTRACT NO. 72G79

LOCATION MAP

GROSS LENGTH = 165.0 FT. = 0.031 MILE
NET LENGTH = 165.0 FT. = 0.031 MILE

TRAFFIC COUNT

ADT = 25 (2000)
PV = N/A
SU = N/A
MU = N/A

STATE OF ILLINOIS
DEPARTMENT OF TRANSPORTATION
DIVISION OF HIGHWAYS

SUBMITTED *February 6, 2014*
Raymond L. Driskell
DEPUTY DIRECTOR OF HIGHWAYS, REGION ENGINEER

March 21, 2014
John D. Baranzelli, P.E.
ENGINEER OF DESIGN AND ENVIRONMENT

March 21, 2014
Omer Osman, P.E.
DIRECTOR OF HIGHWAYS, CHIEF ENGINEER

**PRINTED BY THE AUTHORITY
OF THE STATE OF ILLINOIS**