

EXIST. CURVE C71  
 PI STA 508+65.07  
 $\Delta = 21^\circ 47' 55''$  (RT)  
 D =  $1^\circ 15' 00''$   
 R = 4,583.37'  
 T = 882.56'  
 L = 1,743.78'  
 E = 84.20'  
 PC STA 499+82.51  
 PT STA 517+26.29

EXIST. CURVE C74  
 PI STA 527+71.29  
 $\Delta = 20^\circ 34' 47''$  (LT)  
 D =  $1^\circ 14' 55''$   
 R = 4,588.31'  
 T = 833.00'  
 L = 1,648.05'  
 E = 75.00'  
 PC STA 519+38.29  
 PT STA 535+86.34

EXIST. CURVE C70  
 PI STA 450+93.29  
 $\Delta = 47^\circ 17' 25''$  (RT)  
 D =  $1^\circ 14' 59''$   
 R = 4,584.19'  
 T = 2,007.09'  
 L = 3,783.66'  
 E = 420.13'  
 PC STA 430+86.20  
 PT STA 468+69.87

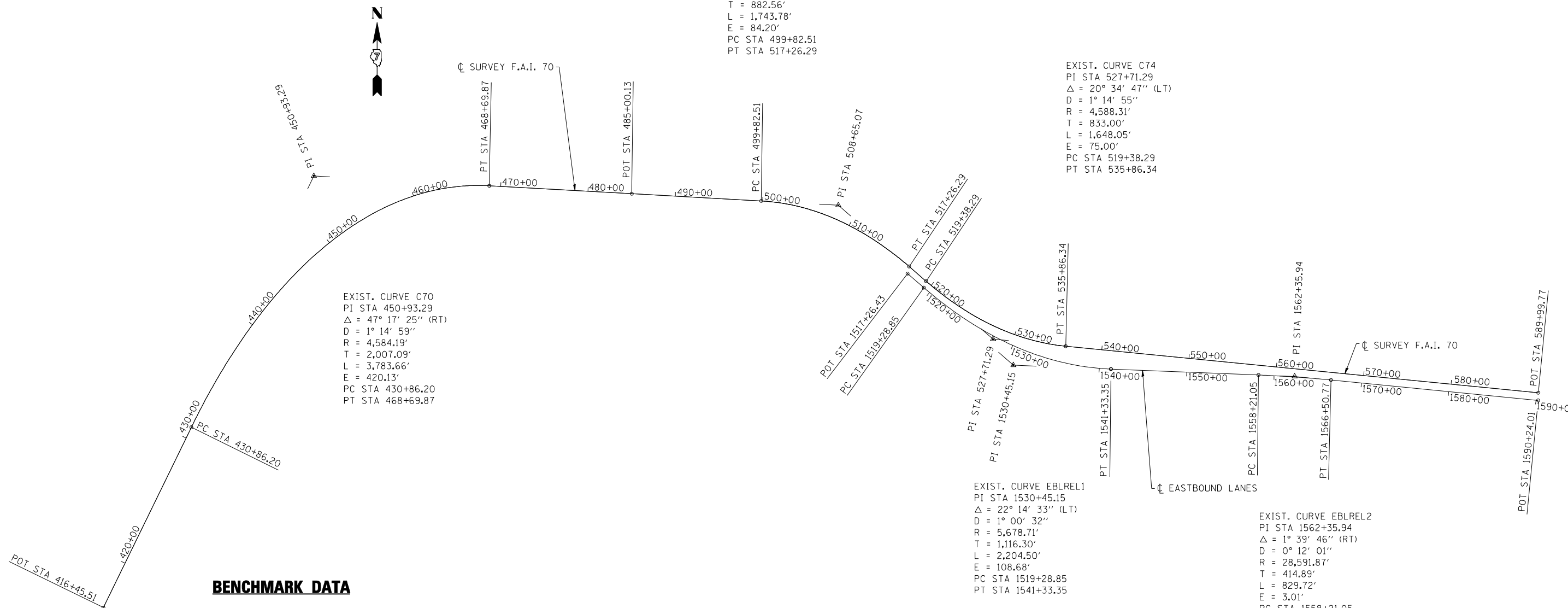
EXIST. CURVE EBLREL1  
 PI STA 1530+45.15  
 $\Delta = 22^\circ 14' 33''$  (LT)  
 D =  $1^\circ 00' 32''$   
 R = 5,678.71'  
 T = 1,116.30'  
 L = 2,204.50'  
 E = 108.68'  
 PC STA 1519+28.85  
 PT STA 1541+33.35

EXIST. CURVE EBLREL2  
 PI STA 1562+35.94  
 $\Delta = 1^\circ 39' 46''$  (RT)  
 D =  $0^\circ 12' 01''$   
 R = 28,591.87'  
 T = 414.89'  
 L = 829.72'  
 E = 3.01'  
 PC STA 1558+21.05  
 PT STA 1566+50.77

**BENCHMARK DATA**

- BENCHMARK 600 CHISELED SQ. ON TOP OF SE CORNER OF SE WINGWALL EBL OF I-70 BRIDGE OVER KASKASKIA RIVER, SN 026-0085, ELEV. 498.372
- BENCHMARK 601 CHISELED SQ. ON TOP OF SW CORNER OF NW WINGWALL WBL OF I-70 BRIDGE OVER KASKASKIA RIVER, SN 026-0018, ELEV. 498.425
- BENCHMARK 602 CHISELED X ON TOP OF WEST BOLT OF LIGHT POLE BASE NO. 2, ELEV. 486.663

**ALIGNMENT PLAN**



PRINT DRIVER = L:\026-0018\026-0018-01.dwg  
 USER NAME = JPC  
 PLOT DATE = 1/29/2014 1:41:10 PM



USER NAME = hos	DESIGNED - ELH	REVISED -
ESCA PROJECT NO. 1000.05	DRAWN - JPC	REVISED -
PLOT SCALE = 0.1667' / IN.	CHECKED - RDP	REVISED -
PLOT DATE = 1/29/2014 1:41:10 PM	DATE - 08/13	REVISED -

**STATE OF ILLINOIS  
 DEPARTMENT OF TRANSPORTATION**

**ALIGNMENT AND BENCHMARKS**

SCALE: NONE SHEET NO. 1 OF 1 SHEETS STA. TO STA.

F.A.I. RTE.	SECTION	COUNTY	TOTAL SHEETS	SHEET NO.
70	(26-3B-1, 3B-1(3))BR	FAYETTE	277	26
CONTRACT NO. 74175				
FED. ROAD DIST. NO.		ILLINOIS FED. AID PROJECT		