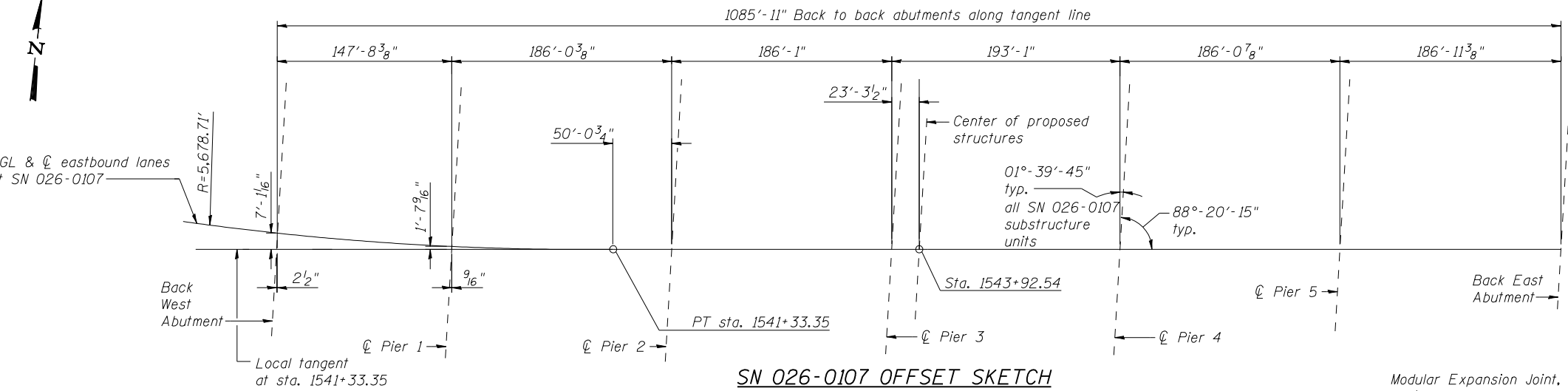
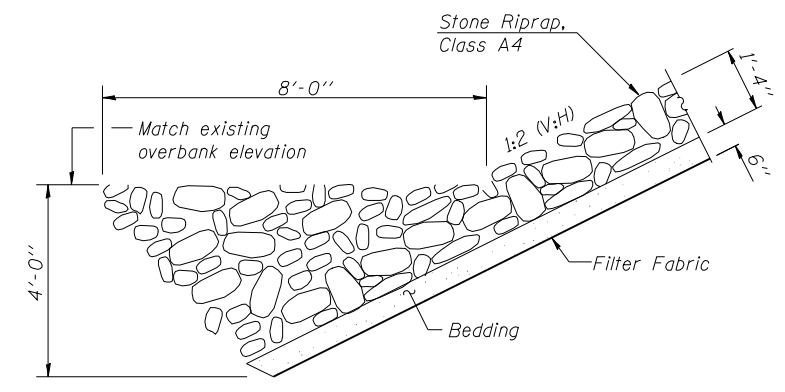


F.A.I. 70 OFFSET SKETCH



SN 026-0107 OFFSET SKETCH



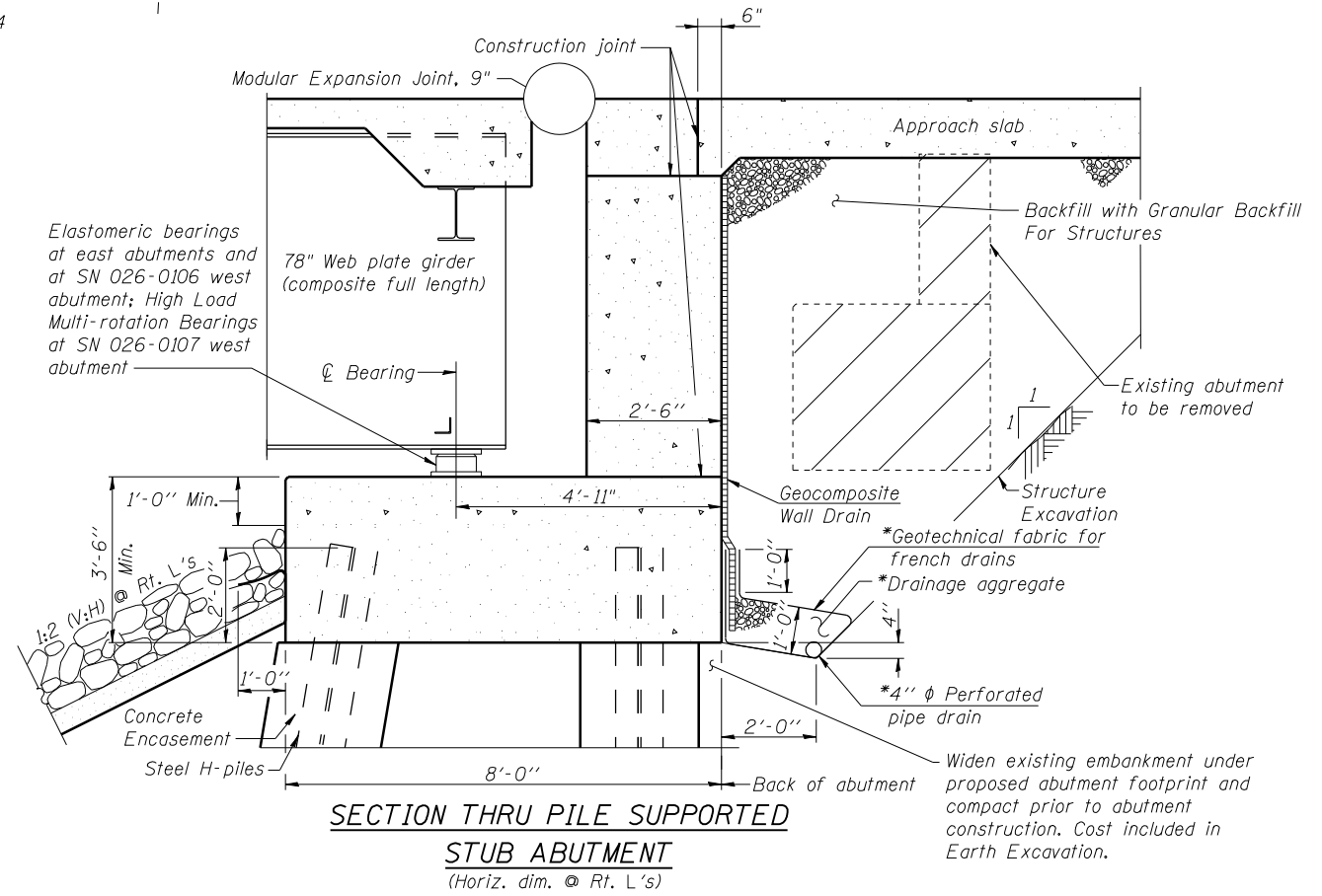
SECTION A-A

PROPOSED SCUPPER AND FLOOR DRAIN LOCATIONS (Looking upstation)

SN 026-0106		SN 026-0107	
Scupper DS-II	6" Floor Drain	Scupper DS-II	6" Floor Drain
Sta. 538+50, LT & RT	Sta. 538+85, LT & RT	Sta. 1538+75, LT	Sta. 1539+25, LT
Sta. 538+60, LT & RT	Sta. 539+15, LT & RT	Sta. 1538+85, LT	Sta. 1540+80, LT
Sta. 539+50, RT	Sta. 540+50, LT & RT	Sta. 1539+00, LT	Sta. 1541+05, LT
Sta. 541+00, RT	Sta. 540+80, LT & RT	Sta. 1539+50, LT	Sta. 1542+29, LT & RT
Sta. 546+00, RT	Sta. 542+20, LT & RT	Sta. 1540+16, LT	Sta. 1542+54, RT
Sta. 547+50, RT	Sta. 542+40, LT & RT	Sta. 1540+65, LT	Sta. 1542+79, LT & RT
Sta. 548+50, LT & RT	Sta. 542+55, LT & RT	Sta. 1541+40, LT	Sta. 1542+94, LT & RT
Sta. 548+90, LT & RT	Sta. 542+70, LT & RT	Sta. 1542+02, RT	Sta. 1543+09, LT & RT
	Sta. 542+85, LT & RT	Sta. 1542+50, LT	Sta. 1543+24, LT & RT
	Sta. 543+00, LT & RT	Sta. 1546+40, LT	Sta. 1543+39, LT & RT
	Sta. 543+15, LT & RT	Sta. 1547+90, LT	Sta. 1543+54, LT & RT
	Sta. 543+30, LT & RT	Sta. 1548+90, LT & RT	Sta. 1543+85, LT & RT
	Sta. 543+60, LT & RT	Sta. 1549+15, LT & RT	Sta. 1544+00, LT & RT
	Sta. 543+75, LT & RT		Sta. 1544+15, LT & RT
	Sta. 543+90, LT & RT		Sta. 1544+30, LT & RT
	Sta. 544+05, LT & RT		Sta. 1544+45, LT & RT
	Sta. 544+20, LT & RT		Sta. 1544+60, LT & RT
	Sta. 544+35, LT & RT		Sta. 1544+80, LT & RT
	Sta. 544+50, LT & RT		Sta. 1546+40, RT
	Sta. 544+65, LT & RT		Sta. 1546+70, LT & RT
	Sta. 546+15, LT & RT		Sta. 1548+25, LT & RT
	Sta. 546+45, LT & RT		Sta. 1548+55, LT & RT
	Sta. 548+00, LT & RT		
	Sta. 548+30, LT & RT		

*Included in the cost of Pipe Underdrains for Structures, see Special Provisions

Note: All drainage system components shall extend parallel to the abutment back wall until they intersect the wingwalls. The pipe shall extend under the wingwall until intersecting the side slope. The pipe shall drain into a concrete headwall. (see Article 601.05 of the Standard Specifications and Highway Standard 601101).



USER NAME = has	DESIGNED - ELH	08/13	REVISED -
ESCA PROJECT NO. 1070.09	CHECKED - RDP	08/13	REVISED -
PLOT DATE = 1/28/2014	DRAWN - DWH	08/13	REVISED -
11:03:14 AM	CHECKED - ELH	01/14	REVISED -

STATE OF ILLINOIS
DEPARTMENT OF TRANSPORTATION

GENERAL DATA
STRUCTURE NOS. 026-0106 & 026-0107

SHEET NO. 3 OF 113 SHEETS

F.A.I. RTE.	SECTION	COUNTY	TOTAL SHEETS	SHEET NO.
70	(26-3B-1, 3B-1(3))BR	FAYETTE	277	83
ILLINOIS FED. AID PROJECT			CONTRACT NO. 74175	