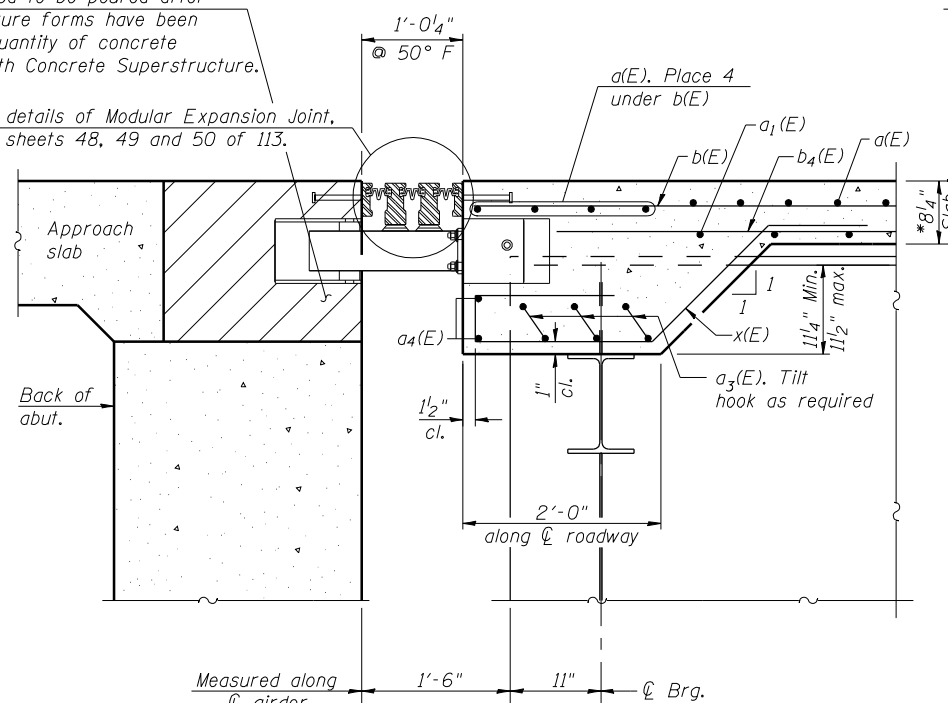


**SECTION THRU PARAPET**

Hatched area to be poured after superstructure forms have been removed. Quantity of concrete included with Concrete Superstructure.

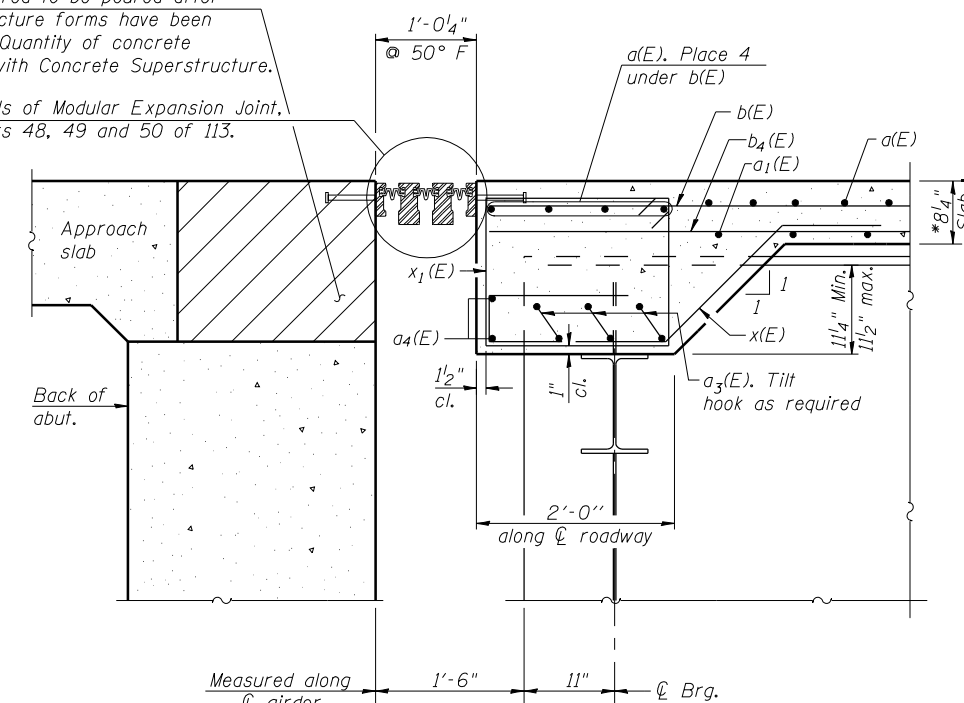
For details of Modular Expansion Joint, see sheets 48, 49 and 50 of 113.



**SECTION A-A**  
(At support boxes)

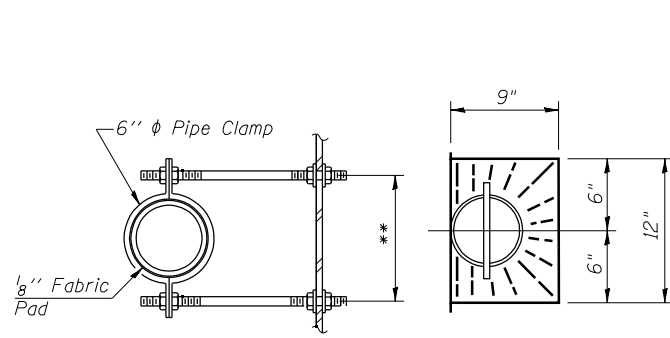
Hatched area to be poured after superstructure forms have been removed. Quantity of concrete included with Concrete Superstructure.

For details of Modular Expansion Joint, see sheets 48, 49 and 50 of 113.



**SECTION A-A**  
(Between support boxes)

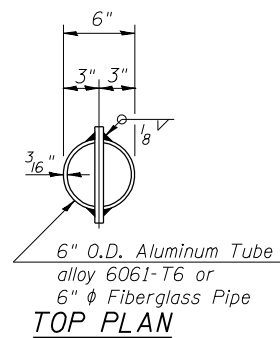
\*Prior to grinding.



**SECTION B-B**

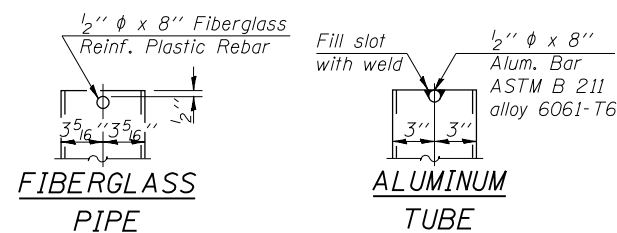
\*\* Dimension as required by Pipe Clamp

**TOP PLAN**



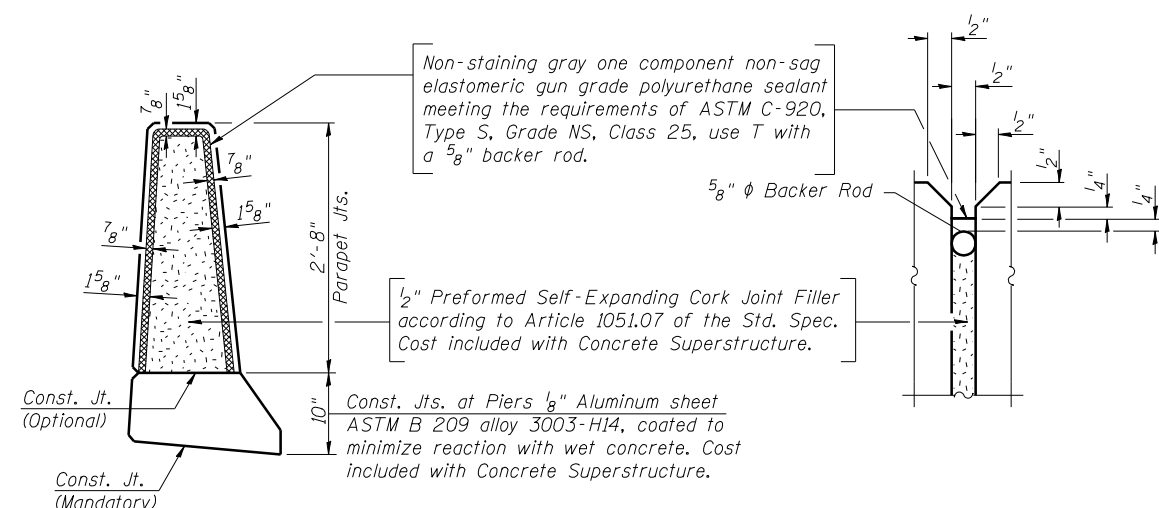
**TOP PLAN**

(Showing Aluminum Tube)



**FIBERGLASS PIPE**

**ALUMINUM TUBE**



**PARAPET JOINT DETAILS**

**Notes:**

- Drains shall be located clear of all cross frames.
- The exterior surfaces of the floor drains shall be painted with the finish coat as specified in the Standard Specifications for Cleaning and Painting New Metal Structures. The exterior surfaces of the drains shall be cleaned according to the Society of Protective Coatings Spec. SSPC-SP1 prior to painting.
- Fiberglass pipe shall conform to ASTM D 2996, with short-time rupture strength hoop tensile stress of 30,000 p.s.i. minimum.
- Galvanize clamping device according to AASHTO M232. Cost of clamping device and inserts is included with Floor Drains.



USER NAME = hos	DESIGNED - SHL	06/13	REVISED -
ESCA PROJECT NO. 1070.09	CHECKED - MTD	08/13	REVISED -
	DRAWN - DWH	08/13	REVISED -
PLOT DATE = 1/28/2014 1:05:11 PM	CHECKED - ELH	10/13	REVISED -

**STATE OF ILLINOIS**  
**DEPARTMENT OF TRANSPORTATION**

**SUPERSTRUCTURE DETAILS - EB**  
**STRUCTURE NO. 026-0107**

SHEET NO. 36 OF 113 SHEETS

F.A.I. RTE.	SECTION	COUNTY	TOTAL SHEETS	SHEET NO.
70	(26-3B-1, 3B-1(3))BR	FAYETTE	277	116
CONTRACT NO. 74175				

ILLINOIS FED. AID PROJECT AID