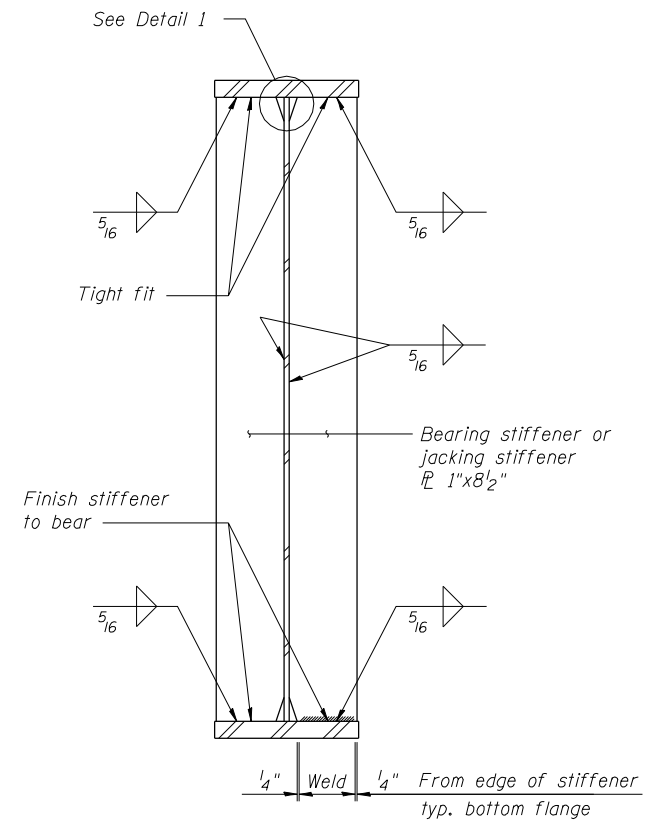
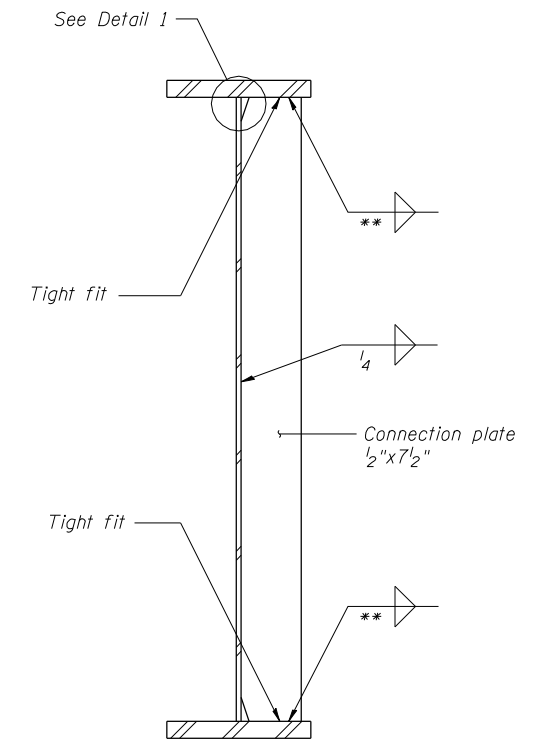


*** 1/4" at West Abutments; 5/16" at East Abutments

BEARING STIFFENER AND JACKING STIFFENER DETAIL AT ABUTMENTS



BEARING STIFFENER AND JACKING STIFFENER DETAIL AT PIERS

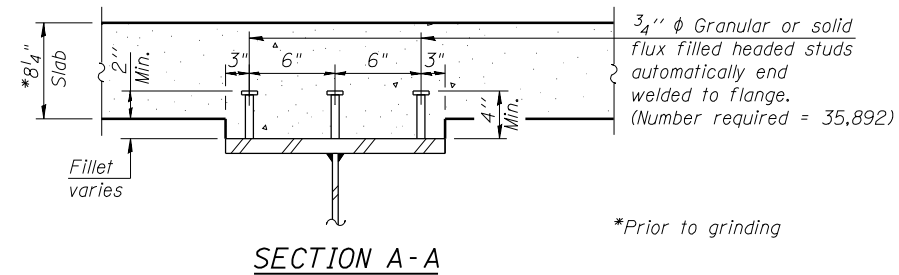


** Connection plate welds to 3/4" flanges shall be 1/4" fillet welds. Use 5/16" fillet welds at other locations.

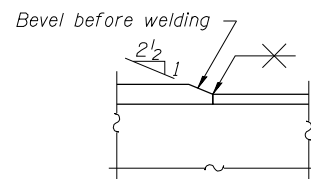
CONNECTION P DETAIL

GENERAL NOTES

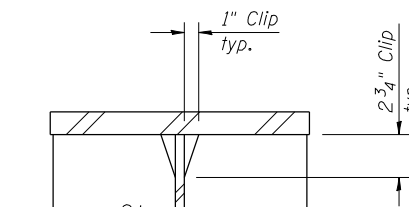
1. For locations of stiffeners and connection plates, see sheets 51 thru 53 and sheets 55 thru 57 of 113.
2. All stiffener and cross frame connection plates shall be AASHTO M270 Grade 50 steel.
3. All cross frame connection plates shall be welded perpendicular to the web. All bearing stiffeners shall be oriented along the skew line.



SECTION A-A



DETAIL 2



DETAIL 1
(Typical top & bottom flanges)



| | | | |
|----------------------------------|----------------|-------|-----------|
| USER NAME = hos | DESIGNED - ELH | 08/13 | REVISED - |
| ESCA PROJECT NO. 1070.09 | CHECKED - RDP | 08/13 | REVISED - |
| | DRAWN - DWH | 08/13 | REVISED - |
| PLOT DATE = 1/28/2014 1:26:52 PM | CHECKED - ELH | 01/14 | REVISED - |

**STATE OF ILLINOIS
DEPARTMENT OF TRANSPORTATION**

**STEEL FRAMING DETAILS
STRUCTURE NOS. 026-0106 & 026-0107**

SHEET NO. 62 OF 113 SHEETS

| F.A.I. RTE. | SECTION | COUNTY | TOTAL SHEETS | SHEET NO. |
|-------------|----------------------|---------|--------------------|-----------|
| 70 | (26-3B-1, 3B-1(3))BR | FAYETTE | 277 | 142 |
| | | | CONTRACT NO. 74175 | |

ILLINOIS FED. AID PROJECT